

# Single-course bleomycin, etoposide, and cisplatin (1xBEP) as adjuvant treatment in testicular nonseminoma clinical stage 1: outcome, safety, and risk factors for relapse in a population-based study

Klaus-Peter Dieckmann<sup>ID</sup>, Tomas Pokrivcak, Lajos Geczi, David Niehaus, Inken Dralle-Filiz, Cord Matthias, Tamas Dienes, Stefanie Zschäbitz, Pia Paffenholz, Tanja Gschliesser, Renate Pichler, Michal Mego, Pia Bader, Friedemann Zengerling, Julia Heinzlbecker, Philipp Krausewitz, Susanne Krege, Gaetano Aurilio, Cem Aksoy, Marcus Hentrich, Christoph Seidel, Péter Törzsök, Tim Nestler, Matthaeus Majewski, Andreas Hiester, Tomas Buchler, Sonia Vallet, Hana Studentova, Sandra Schönburg, Dora Niedersüß-Beke, Julia Ring, Emanuela Trenti, Axel Heidenreich, Christian Wülfing, Hendrik Isbarn, Uwe Pichlmeier and Martin Pichler

## Abstract

**Introduction:** Clinical stage 1 (CS1) nonseminomatous (NS) germ cell tumors involve a 30% probability of relapse upon surveillance. Adjuvant chemotherapy with one course of bleomycin, etoposide, and cisplatin (1xBEP) can reduce this risk to <5%. However, 1xBEP results are based solely on five controlled trials from high-volume centers. We analyzed the outcome in a real-life population.

**Patients and Methods:** In a multicentric international study, 423 NS CS1 patients receiving 1xBEP were retrospectively evaluated. Median follow-up was 37 (range, 6–89) months. Primary end points were relapse-free and overall survival evaluated after 5 years. We also looked at associations of relapse with clinico-pathological factors using stratified Kaplan–Meier methods and Cox regression models. Treatment modality and outcome of recurrences were analyzed descriptively.

**Results:** The 5-year relapse-free survival rate was 96.2%. Thirteen patients (3.1%; 95% confidence interval, 1.65–5.04%) relapsed after a median time of 13 months, of which 10 were salvaged (77%). Relapses were mostly confined to retroperitoneal nodes. Three patients succumbed, two to disease progression and one to toxicity of chemotherapy. Pathological stage >pT2 was significantly associated with relapse rate.

**Conclusion:** The relapse rate of 3.1% found in this population of NS CS1 patients treated with 1xBEP at the routine care level was not inferior to the median rate of 2.3% reported from a meta-analysis of controlled trials. Also, the cure rate of relapses of 77% is consistent with the previously reported rate of 80%. This study clearly shows that the 1xBEP regimen represents a safe treatment for NS CS1 patients.

**Keywords:** bleomycin, cisplatin, embryonal carcinoma, etoposide, germ-cell tumor, local pathological stage, lymphovascular invasion, nonseminoma

Received: 6 November 2021; revised manuscript accepted: 23 February 2022.

*Ther Adv Med Oncol*

2022, Vol. 14: 1–13

DOI: 10.1177/  
17588359221086813

© The Author(s), 2022.  
Article reuse guidelines:  
sagepub.com/journals-  
permissions

Correspondence to:  
**Klaus-Peter Dieckmann**  
Department of Urology,  
Hodentumorzentrum,  
Asklepios Klinik Altona,  
Paul Ehrlich Straße 1,  
22763 Hamburg, Germany

Department of Urology,  
Albertinen-Krankenhaus,  
Hamburg, Germany  
[dieckmannkp@tonline.de](mailto:dieckmannkp@tonline.de)

**Tomas Pokrivcak**  
Department of  
Comprehensive Cancer  
Care, Masaryk Memorial  
Cancer Institute, Masaryk  
University, Brno, Czech  
Republic

**Lajos Geczi**  
**Tamas Dienes**  
National Institute of  
Oncology, Budapest,  
Hungary

**David Niehaus**  
**Christian Wülfing**  
Department of Urology,  
Asklepios Klinik Altona,  
Hamburg, Germany

**Inken Dralle-Filiz**  
Department of Urology,  
Albertinen-Krankenhaus,  
Hamburg, Germany

**Cord Matthias**  
Department of Urology,  
Bundeswehrkrankenhaus  
Hamburg, Hamburg,  
Germany

**Stefanie Zschäbitz**  
Department of  
Medical Oncology,  
Universitätsklinikum  
Heidelberg, Heidelberg,  
Germany

**Pia Paffenholz**  
**Axel Heidenreich**  
Department of  
Urology, Uro-Oncology,  
Robot Assisted and  
Reconstructive Urologic  
Surgery, University  
Hospital Cologne, Cologne,  
Germany

**Tanja Gschliesser**  
Department of Urology,  
Klinikum Klagenfurt,  
Klagenfurt, Austria

**Renate Pichler**

Department of Urology,  
Medical University of  
Innsbruck, Innsbruck,  
Austria

**Michal Mego**

2nd Department of  
Oncology, Faculty of  
Medicine, Comenius  
University, Bratislava,  
Slovak Republic

**Pia Bader**

Department of Urology,  
Städtisches Klinikum  
Karlsruhe, Karlsruhe,  
Germany

**Friedemann Zengerling**

Department of Urology,  
Universitätsklinikum  
Ulm, Ulm, Germany

**Julia Heinzelbecker**

Department of Urology  
and Pediatric Urology,  
University Medical  
Centre, Saarland  
University, Homburg/  
Saar, Germany

**Philipp Krausewitz**

Department of Urology  
and Pediatric Urology,  
Universitätsklinikum  
Bonn, Bonn, Germany

**Susanne Krege**

Department of Urology,  
Evangelische Kliniken  
Essen-Mitte, Essen,  
Germany

**Gaetano Aurilio**

Medical Oncology  
Division of Urogenital and  
Head and Neck Tumours,  
IEO, European Institute of  
Oncology IRCCS, Milan,  
Italy

**Cem Aksoy**

Klinik und Poliklinik für  
Urologie, Medizinische  
Fakultät Carl Gustav  
Carus, Technische  
Universität Dresden,  
Dresden, Germany

**Marcus Hentrich**

Department of  
Hematology and  
Oncology, Red Cross  
Hospital, Munich,  
Germany

**Christoph Seidel**

Department of Oncology,  
Hematology and Bone  
Marrow Transplantation  
with Division of  
Pneumology, University  
Medical Center  
Hamburg-Eppendorf,  
Hamburg, Germany

**Péter Törzsök**

Department of Urology  
and Andrology,  
Paracelsus Medical  
University Salzburg,  
Salzburg, Austria

**Tim Nestler**

Department of Urology,  
Bundeswehrzen  
tralkrankenhaus  
Koblenz, Koblenz,  
Germany

## Introduction

Nonseminomatous tumors (NS) of clinical stage 1 (CS1) comprise approximately 20% of all testicular germ cell tumors (GCTs).<sup>1,2</sup> If managed with surveillance after orchiectomy, 50% of patients with lymphovascular invasion (LVI) of the primary tumor will progress,<sup>3</sup> while the risk is only 15–20% in those without.<sup>4–7</sup> Recurrences can be cured with standard therapy in the vast majority of cases.<sup>8–10</sup> Adjuvant chemotherapy with cisplatin-based regimens can safely prevent progression in the majority of cases.<sup>11</sup> Traditionally, this prophylactic chemotherapy consisted of two cycles of bleomycin, etoposide, and cisplatin regimen (BEP) that had evolved from adjunctive chemotherapy for patients with positive lymph nodes found upon primary retroperitoneal lymph node dissection (RPLND).<sup>12</sup> However, as cisplatin-based chemotherapy involves significant early and late toxicity in a dose-dependent manner,<sup>13–15</sup> attempts have been made to reduce the dosage of adjuvant chemotherapy. Accordingly, a two-course regimen of BEP with reduced dosage of 360 mg etoposide per cycle (BE<sub>360</sub>P) became popular in the United Kingdom.<sup>16</sup> Also, two courses of etoposide and cisplatin only (EP) showed promise.<sup>17</sup>

In 1992, Oliver suggested application of only one course of BEP (1xBEP) in the adjuvant setting of nonseminoma and demonstrated promising results in a small pilot series.<sup>18</sup> Since 2000, several studies have confirmed Oliver's hypothesis,<sup>11,19–23</sup> and a recent study reported a markedly low long-term toxicity of the regimen.<sup>24</sup> Accordingly, guidelines recommend the 1xBEP regimen as adjuvant treatment for nonseminoma CS1 patients with risk factors.<sup>9,25,26</sup>

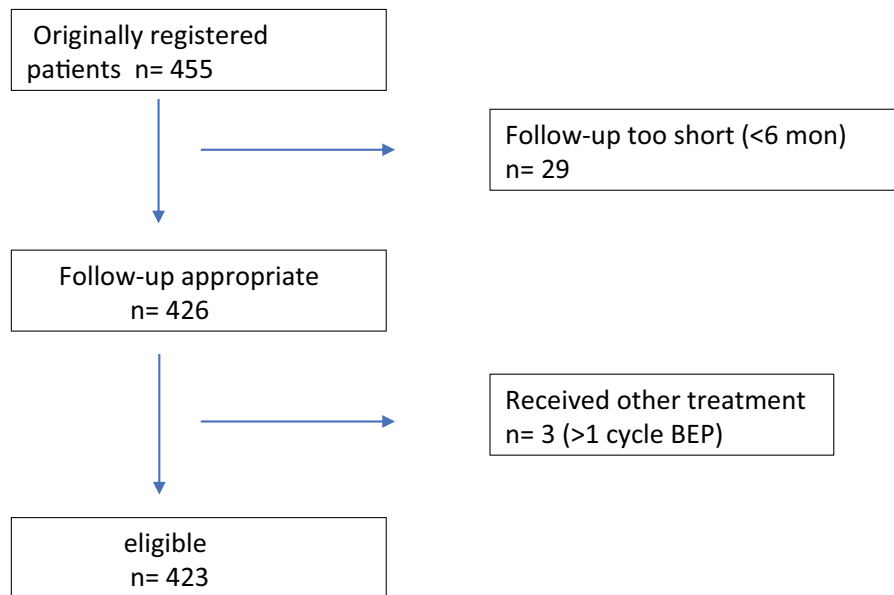
However, evidence for efficacy of the 1xBEP regimen in CS1 nonseminoma rests on only five controlled studies of 22–517 patients primarily from specialized treatment centers or single country populations.<sup>19–23</sup> Therefore, more data are needed. Generally, outcome research studies have revealed that favorable treatment results obtained in well-selected patients of properly conducted clinical trials are usually not achieved in patients treated at the routine care level.<sup>27–32</sup> Such disparities have also been observed in testicular cancer.<sup>33–36</sup> Undertreatment is the most important factor engendering inferior outcomes;<sup>37–39</sup> it may be caused by a variety of patient-related factors including age, comorbidities, and compliance, as well as socio-economic

factors such as economic situation, insurance status, educational level, and ethnic subtypes.<sup>40–45</sup> Finally, inadequate experience of low-volume institutions may compromise outcome.<sup>39,46</sup> With regard to the adjuvant 1xBEP regimen, only sporadic data relating to patients treated outside of published studies are available.<sup>47,48</sup> Furthermore, a recent collaborative recurrence outcome study suggested inferior survival rates of relapses after 1xBEP.<sup>49</sup> Accordingly, that regimen was strongly cautioned by some leaders in the field.<sup>50</sup> The aim of this study was to analyze outcomes in unselected NS CS1 patients treated with 1xBEP at the routine care level and to compare the results with those of controlled studies.

## Patients and methods

A total of 33 institutions from six European countries participated in a retrospective observational study on patients with testicular NS CS1 undergoing 1xBEP from 2004 to 2020. Eligibility criteria included: inguinal orchiectomy, histologic confirmation of NS GCT, age >18 years, absence of metastases, negative tumor markers postoperatively, application of one complete course of BEP with standard dosing within 8 weeks after surgery, and follow-up of ≥6 months. We registered the following data: age at diagnosis (years), tumor size (mm), presence of ≥50% embryonal carcinoma (≥50% EC) in primary tumor (yes/no), length of follow-up (months), and relapse (yes/no). Lymphovascular invasion was rated as absent in the case of local stage pT1 and as present in all stages >pT1. This was done for reasons of simplicity, although the latter stages are principally defined as local extension of the primary tumor into or beyond testicular margins and lymphovascular invasion.<sup>51</sup> Follow-up was performed according to institutional guidelines. Relapse was defined as development of metachronous metastatic disease. Second, testicular tumors were not considered relapses. In relapsing cases, we also registered localization of metastases, treatment modalities, and outcome. Health events occurring subsequent to chemotherapy were not systematically assessed but recorded if reported.

For statistical analysis of quantitative baseline characteristics, measures for location (arithmetic means, medians) and dispersion [standard deviations, range, first and third quartiles (Q1 and Q3)] were provided. For binary and categorical variables, proportions and 95% CIs were



**Figure 1.** Study profile.

calculated. The primary end points relapse-free survival and overall survival were analyzed by means of Kaplan–Meier methods; 5- and 10-year relapse-free and overall survival rates were deduced together with their 95% CIs. To allow for exploratory comparison of the overall relapse rate reported in the meta-analysis of controlled studies<sup>11</sup> with the present results, the crude proportions of relapses, the exact Blyth–Still–Casella 95% CIs, and the unconditional 95% CI on the difference of two binomial proportions and Barnard’s unconditional test for testing differences between rates were provided.

The association of relapse-free survival with clinico-pathological factors was analyzed in an exploratory approach using stratified Kaplan–Meier analyses and log-rank tests. Hazard ratios with 95% CIs were deduced from univariate Cox regression models. In addition, a multivariable Cox-regression model was fitted. Significance was assessed by means of Wald tests. For these analyses, the continuous factors age and tumor size were categorized at respective median values.

All patient-related data were entered into a commercially available database (MS Excel, version 2017) and stored until final evaluation. SAS software (version 9.4) was used for data cleaning and statistical analyses. Treatment of relapses was

analyzed descriptively and compared with reported data.<sup>11,49</sup>

Ethical approval was provided by Ethikkommission der Ärztekammer Hamburg on 2 March 2020 (PV7288). The need for informed consent of patients was waived by the Ethics committee because only anonymized patients’ data were used during execution of this study. All study activities were conducted according to the Declaration of Helsinki of the World Medical Association as amended by the 64th General Assembly, October 2013.

## Results

A total of 423 patients of 455 originally registered were included in the final analysis (study profile, Figure 1). Clinical patient characteristics are listed in Table 1. Relevant comorbidities were noted in 58 patients (14%; details in Table 2).

Thirteen patients relapsed within a median time of 14 months (range, 3–64 months) with four recurrences after 36 months or later. The crude relapse rate was 3.1% (exact 95% CI: 1.65–5.04%) compared with 2.3% (95% CI: 1.50–3.38%) in the published meta-analysis;<sup>11</sup> the absolute difference between the two studies amounted to 0.8 percentage points (exact unconditional 95% CI: –0.97% to 3.08%,

**Matthaeus Majewski**  
Department of Urology,  
Bundeswehrkrankenhaus  
Ulm, Ulm, Germany

**Andreas Hiester**  
Department of Urology,  
Heinrich-Heine-  
University Düsseldorf,  
Düsseldorf, Germany

**Tomas Buchler**  
Department of Oncology,  
Charles University and  
Thomayer Hospital,  
Prague, Czech Republic

**Sonia Vallet**  
Department of  
Internal Medicine II,  
Universitätsklinikum  
Krems, Krems, Austria  
  
Department of Oncology,  
Palacký University  
Medical School and  
Teaching Hospital,  
Olomouc, Czech Republic

**Hana Studentova**  
Department of Oncology,  
Palacký University  
Medical School and  
Teaching Hospital,  
Olomouc, Czech Republic

**Sandra Schönburg**  
Department of Urology,  
Universitätsklinikum  
Halle (Saale), Halle  
(Saale), Germany

**Dora Niedersüß-Beke**  
Department of  
Medical Oncology,  
Wilhelminenspital,  
Vienna, Austria

**Julia Ring**  
Department of Urology,  
Universitätsklinikum  
Schleswig-Holstein,  
Lübeck, Germany

**Emanuela Trenti**  
Department of Urology,  
Central Hospital Bolzano,  
Bolzano, Italy

**Hendrik Isbarn**  
Martini-Klinik, University  
Medical Center  
Hamburg-Eppendorf,  
Hamburg, Germany

**Uwe Pichlmeier**  
Institute of Medical  
Biometry and  
Epidemiology, University  
Medical Center  
Hamburg-Eppendorf,  
Hamburg, Germany

**Martin Pichler**  
Division of Oncology,  
Medical University of  
Graz, Graz, Austria

**Table 1.** Patients' characteristics.

Age (years; eligible $n=423$ )	
Mean (SD)	33.7 (10.5)
Median (Q1; Q3)	31 (26; 39)
Range	16–74
Tumor size (mm; eligible $n=391$ )	
Mean (SD)	34.7 (27.7)
Median (Q1; Q3)	30 (19; 42)
Range	3 - 350
pT stage (eligible $n=423$ )	
pT1	$n = 135$ ; 31.9%; 95% CI: 27.5–36.4%
pT2	$n = 269$ ; 63.6%; 95% CI: 59.0–68.2%
>pT2	$n = 19$ ; 4.5%; 95% CI: 2.5–6.5%
$\geq 50\%$ EC (eligible $n=412$ )	
Yes	$n = 252$ ; 61.2%; 95% CI: 56.5–65.9%
Follow-up (eligible $n=423$ )	
Median (months)	37
Range of those surviving	6–189
CI, confidence interval; $\geq 50\%$ EC, embryonal carcinoma encompassing $\geq 50\%$ of primary tumor; Q1, first quartile; Q3, third quartile; SD, standard deviation.	

$p=0.4722$ ). The calculated 5- and 10-year relapse-free survival rates were 96.2% (95% CI: 93.2–97.9%) and 94.2% (95% CI: 87.7–97.3%), respectively (Figure 2). In total, three patients died; the calculated 5- and 10-year overall survival rates were both 99.2% (95% CI: 97.6–99.8%) (Figure 3).

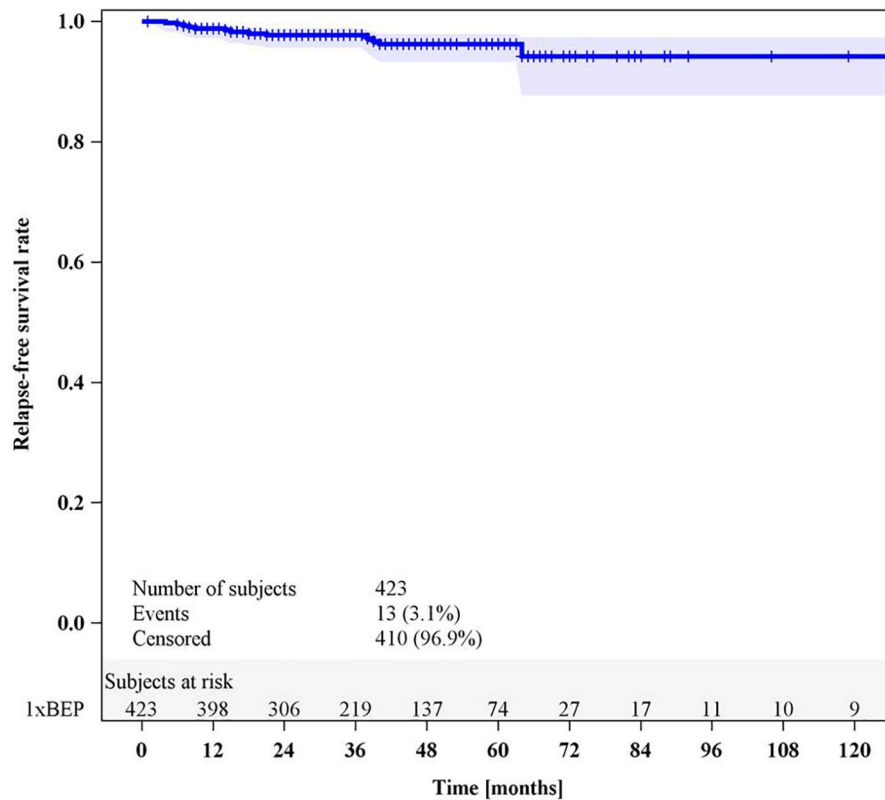
Results of the exploratory search for associations of relapses with clinical factors are listed in Table 3. Only local tumor stage >pT2 was significantly associated with relapse rate. This association remained relevant in the multivariable Cox-regression model (Figure 4, Table 4). In this subgroup, 2 (10.5%) of 19 patients relapsed; 11 patients among those with lower local stages relapsed (2.7%;  $p=0.0170$ ).

Relapses were localized in the retroperitoneal nodes in 12 cases, one with additional pelvic node involvement and one with additional pulmonary

**Table 2.** List of comorbidities of the patients included in the study ( $n$ , number of patients).

Arterial hypertension	12
Heavy smoker	8
Crohn's disease	5
Epilepsy	4
Diabetes mellitus	3
Chronic heart disease	3
Hypothyroidism	2
Ulcerative colitis	2
History of drug abuse	2
Morbid obesity	2
Synchronous non-Hodgkin lymphoma	2
Multiple sclerosis	1
Chronic obstructive pulmonary disease	1
Bronchial asthma	1
History of myocarditis	1
Chronic depression	1
Synchronous HIV infection	1
Alcohol abuse	1
Parkinson's disease	1
History of cerebral stroke	1
Schizophrenia	1
History of thyroid cancer	1
Chronic kidney disease	1
Gilbert's disease	1

metastases (Table 5). One patient developed pulmonary metastases only. Treatment consisted of cisplatin-based chemotherapy alone in four patients, while four had chemotherapy and additional surgery (Table 5). Noteworthy, four patients were cured with surgery alone, all of whom had teratoma only, histologically. One patient unfit for chemotherapy received best supportive care. Ten of the relapsing patients were cured (77%), and none experienced a second relapse after a median follow-up time of 24 months (range, 0–44 months).



**Figure 2.** Progression-free survival rate in NS CS1 patients following treatment with 1xBEP. Kaplan-Meier survival curve showing a calculated 96.2% progression-free rate at 60months and a rate of 94.2% at 120months. Shadowed area denotes 95% confidence intervals.

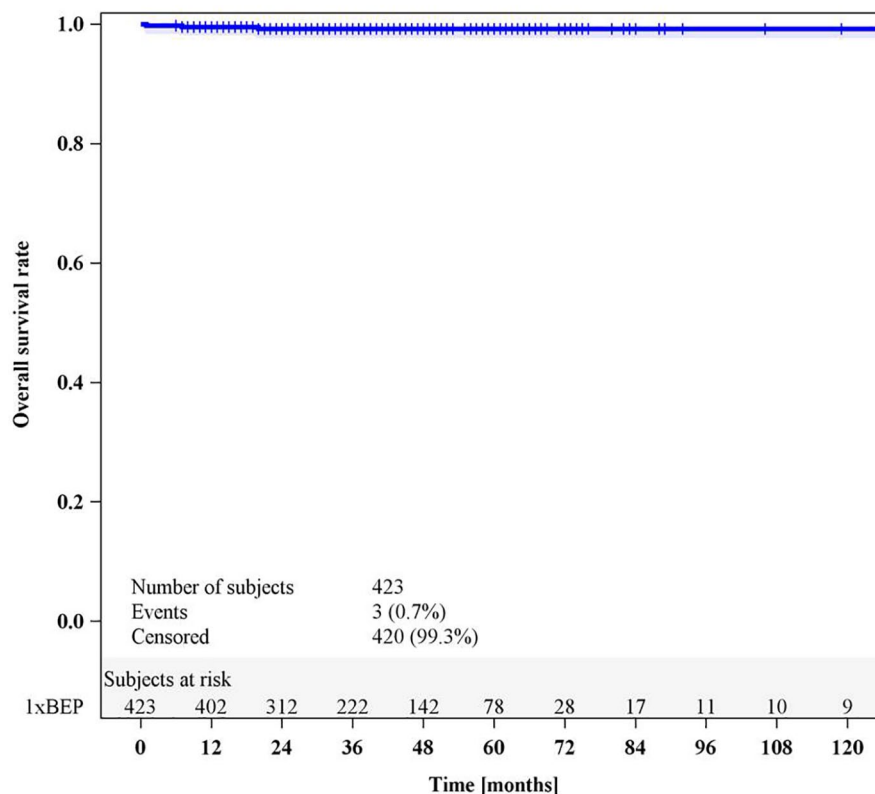
We noted three major complications of 1xBEP therapy: one case of neutropenic sepsis, one case of fatal bowel ischemia, and one case of cerebral stroke. Five patients developed contralateral testicular tumors (1.2%).

### Discussion

The central result of this retrospective observational study is that NS CS1 patients treated with 1xBEP faced a low overall relapse rate of 3.1%, which is consistent with the previously reported rate of 2.3%.<sup>11</sup> Similarly, 77% of relapsing patients were cured, consistent with the previously reported rate of 80%.<sup>49</sup> Although this study was conducted in unselected patients at the routine care level, the therapeutic outcome was not significantly inferior to that obtained in selected patient populations of controlled trials.<sup>11</sup>

Direct comparison of the present results with those of the controlled trials is impractical because there is significant variation among these studies in terms of patient characteristics and

methodologies. The reported crude numbers of relapses of the 1xBEP trials range from 1.1%<sup>20</sup> to 4.5%<sup>21</sup> and are in accordance with the frequency of 3.1% of this study. This figure is also close to the 1.8% relapse rate of CS1 patients receiving the traditional two cycle regimen,<sup>11</sup> and it is considerably lower than the 7–11% relapse rate observed in patients receiving primary RPLND.<sup>20,52</sup> The calculated 5-year relapse-free survival rate of 96.2% of this study appears to be marginally lower than the 97% 2-year relapse-free rate reported in the UK study,<sup>23</sup> the 99.6% 5-year cancer-specific survival rate reported by Swenoteca,<sup>22</sup> and the 99.41% 2-year relapse-free rate of a German trial.<sup>20</sup> However, the differences are marginal with wide overlap of 95% CIs. More importantly, the figures cannot be directly compared because they relate to methodologically different analytical variables, mainly due to divergent observation times. Overall, the therapeutic outcome observed in this study is likely not inferior to the results of previous trials. Accordingly, the present report, which is the second largest study to date, adds evidence for safety of the 1xBEP



**Figure 3.** Overall survival rate in NS CS1 patients following treatment with 1xBEP. Kaplan–Meier survival curve showing a calculated 99.2% overall survival rate both at 60 months and at 120 months. Shaded area denotes 95% confidence intervals.

regimen and clearly supports its recommendation in guidelines.

The present results are particularly noteworthy because the favorable outcome was achieved in unselected patients in everyday clinical practice. The non-inferiority of the 1xBEP treatment in this population to the results of clinical trials likely relates to the absence of most of the factors that usually precipitate inferior results in routine care patients such as undertreatment, non-compliance, and selection bias.<sup>29,39,53</sup> The former two factors are likely negligible because the application of 1xBEP is simple. Selection bias generally contributes to the disparities regarding therapeutic outcome among trial populations and routine care patients.<sup>28,29,31,44</sup> However, this kind of bias is low in testicular cancer patients since comorbidities and older age are uncommon in these mostly young individuals. We noted relevant comorbidities in 14% of patients, and 10% were aged  $\geq 50$  years. Although age did not affect relapse-free survival rates statistically in the Cox regression model, it appears noteworthy that 5 of

the 13 relapsing patients were aged  $>50$  years, and that all of those not cured were in that age group. This observation is consistent with the recently reported revision of the International Germ Cell Cancer Collaborative Group (IGCCCG) classification system where older age is now considered a poor prognostic factor.<sup>54</sup> It is conceivable that age failed to reach statistical significance in our analysis because of the small numbers of relapses in this study. Conversely, one could speculate that several of the elderly patients of this study and particularly those with comorbidities would not have qualified for inclusion in the controlled trials.

As this study included both patients with and without the risk factor of lymphovascular invasion (i.e. local stages pT1 and  $>pT1$ ), it is rational to assume that patients with low risk of recurrence might have biased the overall result toward a lower relapse rate. However, local stage  $>pT1$  was present in 67% of our patients, which represents a higher frequency than reported in previous studies.<sup>19,20,22</sup> Only the UK-based study

**Table 3.** Individual effects of clinico-pathological factors on RFS rates.

Factor	n (%) relapses	5-year RFS rate (95% CI)	10-year RFS rate (95% CI)	HR	95% CI	p <sup>a</sup>
Overall (n=423)	13 (3.1%)	96.2% (93.2–97.9%)	94.2% (87.7–97.3%)			
≥ 50% EC						0.3207
No (n=160)	7 (4.4%)	95.3% (90.3–97.7%)	95.3% (90.3–97.7%)	1.0		
Yes (n=252)	6 (2.4%)	96.5 (91.5–98.6%)	92.3% (77.4–97.5%)	0.58	0.19–1.73	
Tumor size						0.8526
≤30 mm (n=206)	6 (2.9%)	95.3% (89.3–98.0%)	95.0% (89.8–98.0%)	1.0		
>30 mm (n=185)	5 (2.7%)	97.7% (93.9–99.1%)	92.5% (73.1–98.1%)	0.89	0.27–2.93	
Age						0.3674
≤31 years (n=216)	5 (2.3%)	96.6% (91.5–98.6%)	96.6% (91.5–98.6%)	1.0		
>31 years (n=207)	8 (3.9%)	95.8% (91.2–98.1%)	91.7% (77.6–97.1%)	1.66	0.54–5.08	
pT Stage						0.0170
pT1 (n=135)	7 (5.2%)	94.5% (88.7–97.3%)	94.5% (88.7–97.3%)	1.0		
pT2 (n=269)	4 (1.5%)	98.0% (93.6–99.4%)	93.5% (76.1–98.4%)	0.31	0.09–1.06	
>pT2 (n=19)	2 (10.5%)	81.2% <sup>b</sup> (37.9–95.6%)	81.2% (37.9–95.6%)	2.52	0.52–12.19	

CI, confidence interval; > 50% EC, >50% proportion of embryonal carcinoma in primary tumor; HR, hazard ratio; RFS, relapse-free rate.  
<sup>a</sup>Log-rank test.  
<sup>b</sup>6-year rate because of no patient at risk thereafter.

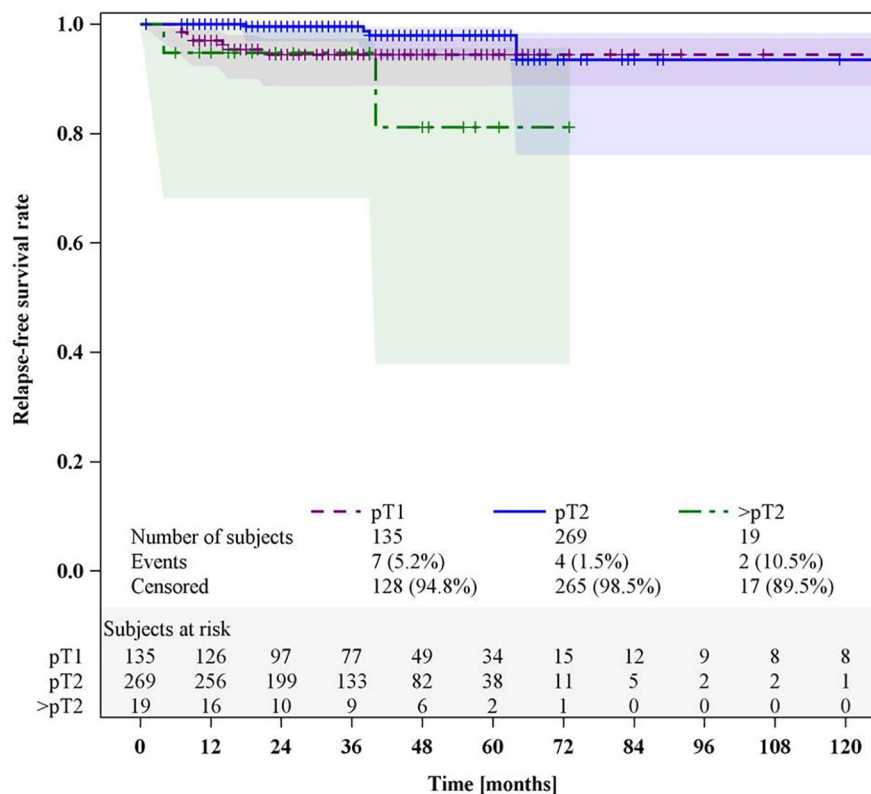
exclusively enrolled patients with lymphovascular invasion (pT2) and the relapse rate was 3.0%.<sup>23</sup> In contrast to the Swenoteca study,<sup>22</sup> we observed fewer relapses among patients with the risk factor >pT1 (2.1%) than in those without (5.2%), although the difference was not significant. It thus appears that inclusion of patients without this risk factor did not greatly impact the overall results of our study.

Exploratory evaluation of possible risk factors revealed advanced local stage (> pT2) to be the only parameter significantly associated with recurrence despite adjuvant BEP chemotherapy. Although our finding of local stage >pT2 representing a risk factor for progression will require confirmation in future studies, caregivers of GCT patients are likely best advised to apply particular vigilance to these patients.

The median follow-up length of 37 months in this study is shorter than the intervals of 49–186 months reported in previous trials.<sup>19,23</sup> As the

number of relapses generally increases with follow-up time, a longer observation time may incur more relapses than shorter intervals. Thus, the low relapse rate found in this study might partly relate to the comparatively short observation time. However, relapses predominantly occur in the first 2 years after completion of treatment; only sporadic cases recur later.<sup>24</sup> Relapses in this study occurred after a median interval of 14 months, which is nearly identical to the interval of 13 months reported by Fischer *et al.*,<sup>49</sup> suggesting that the confounding effect of the comparatively short observation time of our study is likely small. We noted four patients (31%) who recurred later than 36 months after chemotherapy, which is consistent with the rate of 29% reported by Fischer *et al.*<sup>49</sup> Thus, late relapses will require further attention.

Localization of relapse was confined to abdominal and pelvic nodes in 10 patients; only three (23%) had mediastinal or pulmonary metastases. Accordingly, 12 of the recurrences in this study



**Figure 4.** Progression-free survival stratified by local tumor stages (pT stages).

Kaplan-Meier survival curve showing a significantly lower progression-free rate in local stage >pT2 (89.5%) than in pT1 (94.8%) and pT2 (98.5%). Shaded areas denote 95% confidence intervals.

were classified as IGCCCG good prognosis; only one had intermediate prognosis. These findings correspond to those of the two largest 1xBEP trials. The Swenoteca series reported 2 of their 12 relapses had CS3 disease, yet all were classified as IGCCCG good prognosis.<sup>22</sup> The UK series reported seven relapses, six with good prognosis.<sup>23</sup> A slightly higher incidence of extra-abdominal relapses with 33% CS3 disease was noted in the collaborative recurrence outcome study.<sup>49</sup> Similarly, their proportion of 16% intermediate and poor prognosis cases was higher than that of the present series and of other reports. However, these differences may relate to selection bias since the Fischer study exclusively enrolled patients with ascertained relapses and most of these patients were from tertiary referral centers.<sup>49</sup> Ten of our relapsing patients (77%) were salvaged with standard therapy, which is consistent with the previously reported salvage rate of 80%.<sup>11,49</sup> It is worth noting that four patients had teratoma only and were cured with RPLND alone. Thus, surgery should always be considered in NS CS1 patients relapsing after adjuvant chemotherapy.

Selection bias must generally be considered when trial results are compared with outcomes achieved at the population level.<sup>29</sup> This is highlighted by two of our failing patients who would likely have been disqualified from inclusion into any chemotherapy study: one 60-year-old patient with a history of Crohn's disease who was unfit for postchemotherapy RPLND, and one 67-year-old patient with Parkinson's disease who was unfit for salvage chemotherapy.

Although treatment-related toxicity was not systematically assessed, we noted one cerebral stroke in a patient with no comorbidities and one fatal bowel ischemia in a man with pre-existing arterial hypertension. This rate of major vascular complications (0.5%) corresponds to the previously reported rate of 0.3% and underscores the current experience that major vascular events may occur even during the first cycle of chemotherapy.<sup>55,56</sup> The one fatality secondary to bowel ischemia corresponds to a therapy-associated mortality of 0.3%. By contrast, none of the trials reported any treatment-related mortality.



**Table 4.** Effects of clinico-pathological factors on relapse-free survival rates: multivariable Cox regression models.

Factor	HR	95% CI	<i>p</i> <sup>a</sup>
≥50%EC			0.8327
No	1.0		
Yes	0.87	0.25–3.09	
Tumor size			0.9551
≤30mm	1.0		
>30mm	0.97	0.29–3.27	
Age			0.7553
≤31years	1.0		
>31years	1.22	0.36–4.15	
pT stage			0.0588
pT1	1.0		
pT2	0.42	0.11–1.61	
>pT2	3.25	0.61–17.40	

CI, confidence interval; >50% EC, >50% proportion of embryonal carcinoma in primary tumor; HR, hazard ratio.  
<sup>a</sup>Wald test.

Limitations of this study relate to the retrospective enrollment of patients, which is generally open to selection bias. The comparatively short follow-up interval of 37 months could have contributed to the low rate of relapse particularly in light of the several late relapses. Other limitations relate to the lack of central pathologic review and to non-standardized follow-up. On the other hand, strengths come from the overall large number of cases, the multi-institutional, international patient accrual, and the inclusion of unselected routine care patients.

Overall, 1xBEP chemotherapy can safely prevent relapse in patients with clinical stage 1 nonseminomatous GCTs regardless of the presence of histological risk factors. Only patients with advanced local tumor stage (>pT2) may require particular attention. The regimen proved to be safe in patients at the routine care level.

#### Author contributions

**Klaus-Peter Dieckmann:** Conceptualization; Data curation; Formal analysis; Investigation;

Methodology; Project administration; Supervision; Validation; Writing – original draft; Writing – review & editing.

**Tomas Pokrivcak:** Investigation; Methodology; Writing – review & editing.

**Lajos Geczi:** Data curation; Investigation; Writing – review & editing.

**David Niehaus:** Data curation; Investigation; Project administration; Validation; Writing – review & editing.

**Inken Dralle-Filiz:** Data curation; Investigation; Writing – review & editing.

**Cord Matthies:** Data curation; Investigation; Project administration; Writing – review & editing.

**Tamas Dienes:** Data curation; Investigation; Writing – review & editing.

**Stefanie Zschäbitz:** Data curation; Investigation; Methodology; Writing – review & editing.

**Pia Paffenholz:** Data curation; Investigation; Writing – review & editing.

**Tanja Gschliesser:** Investigation; Project administration; Writing – review & editing.

**Renate Pichler:** Data curation; Investigation; Validation; Writing – review & editing.

**Michal Mego:** Data curation; Investigation; Writing – original draft; Writing – review & editing.

**Pia Bader:** Investigation; Project administration; Writing – review & editing.

**Friedemann Zengerling:** Formal analysis; Investigation; Validation; Writing – review & editing.

**Julia Heinzlbecker:** Data curation; Investigation; Writing – review & editing.

**Philipp Krausewitz:** Investigation; Writing – review & editing.

**Susanne Krege:** Data curation; Investigation; Methodology; Writing – review & editing.

**Gaetano Aurilio:** Data curation; Investigation; Writing – review & editing.

**Cem Aksoy:** Investigation; Project administration; Writing – review & editing.

**Marcus Hentrich:** Data curation; Investigation; Methodology; Writing – review & editing.

**Table 5.** Clinical details of patients relapsing after one-course BEP.

	Age (years)	pT2	Interval to relapse (months)	Localization	Clinical stage at relapse/IGCCG	Treatment	Outcome	Survival since relapse (months)	Comorbidity
1	20	-	6	Retroperitoneal	IIB/good prognosis	RPLND + 2xBEP	CR/ NED	40	-
2	28	+	41	Retroperitoneal	IIA/good prognosis	3xBEP	CR/NED	21	Heavy smoker
3	21	+	38	retroperitoneal	IIA/ good prognosis	3xBEP	CR/ NED	20	-
4	60	-	9	Retroperitoneal + pulmoal	III/intermediate prognosis	4xTIP	AWD	31	Crohn's disease
5	32	-	14	Retroperitoneal	IIA/good prognosis	RPLND (teratoma only)	CR/NED	10	-
6	67	+	17	Pulmoal	III/good prognosis	BSC	DOD	0	Parkinson's disease
7	28	-	7	Retroperitoneal	IIB/good prognosis	RPLND (teratoma only)	CR/NED	32	-
8	34	+	36	Retroperitoneal	IIB/good prognosis	RPLND (teratoma only)	CR/NED	24	-
9	25	-	13	Retroperitoneal	IIB/good prognosis	RPLND (teratoma only)	CR/NED	36	-
10	51	+	3	Pelvic + retroperitoneal	IIC/good prognosis	Surgery + 3xBEP	DOD	0	-
11	34	+	64	Retroperitoneal	IIA/good prognosis	RPLND, 3xPEI	CR/NED	44	Cerebral stroke during chemotherapy
12	74	-	21	Retroperitoneal	IIC/good prognosis	4xTIP + RPLND	CR/NED	25	-
13	52	-	10	Retroperitoneal, mediastinal	III/good prognosis	4xBEP	CR/NED	3	-

AWD, alive with disease; BEP, bleomycin, etoposide, and cisplatin; BSC, best supportive care; CR, complete remission; DOD, dead of disease; IGCCG, International Germ Cell Cancer Collaborative Group; NED, no evidence of disease; PEI cisplatin, etoposide, ifosfamide; RPLND, retroperitoneal lymph node dissection; TIP, paclitaxel, ifosfamide, cisplatin.

**Christoph Seidel:** Data curation; Investigation; Validation; Writing – review & editing.

**Peter Törzsök:** Data curation; Investigation; Writing – review & editing.

**Tim Nestler:** Data curation; Investigation; Methodology; Writing – review & editing.

**Matthaeus Majewski:** Investigation; Project administration; Writing – review & editing.

**Andreas Hiester:** Data curation; Investigation; Writing – review & editing.

**Tomas Buchler:** Conceptualization; Investigation; Methodology; Writing – review & editing.

**Sonia Vallet:** Investigation; Resources; Writing – review & editing.

**Hana Studentova:** Investigation; Project administration; Writing – review & editing.

**Sandra Schönburg:** Data curation; Investigation; Writing – review & editing.

**Dora Niedersüß-Beke:** Investigation; Writing – review & editing.

**Julia Ring:** Data curation; Investigation; Writing – review & editing.

**Emanuela Trenti:** Investigation; Project administration; Writing – review & editing.

**Axel Heidenreich:** Conceptualization; Investigation; Methodology; Writing – original draft.

**Christian Wülfing:** Conceptualization; Investigation; Project administration; Supervision; Writing – review & editing.

**Hendrik Isbarn:** Conceptualization; Formal analysis; Supervision; Validation; Writing – review & editing.

**Uwe Pichlmeier:** Data curation; Formal analysis; Methodology; Project administration; Validation; Writing – original draft.

**Martin Pichler:** Conceptualization; Investigation; Methodology; Supervision; Writing – original draft; Writing – review & editing.


### Conflict of interest statement

The authors declared no potential conflicts of interest with respect to the research, authorship, and/or publication of this article.

### Funding

The authors received no financial support for the research, authorship, and/or publication of this article.

### ORCID iD

Klaus-Peter Dieckmann  <https://orcid.org/0000-0002-3821-7956>

### References

1. Cheng L, Albers P, Berney DM, *et al.* Testicular cancer. *Nat Rev Dis Primers* 2018; 4: 29.
2. Dieckmann KP, Richter-Simonsen H, Kulejewski M, *et al.* Testicular germ-cell tumours: a descriptive analysis of clinical characteristics at first presentation. *Urol Int* 2018; 100: 409–419.
3. Daugaard G, Gundgaard MG, Mortensen MS, *et al.* Surveillance for stage I nonseminoma testicular cancer: outcomes and long-term follow-up in a population-based cohort. *J Clin Oncol* 2014; 32: 3817–3823.
4. Maroto P, Garcia Del Muro X, Aparicio J, *et al.* Multicentre risk-adapted management for stage I non-seminomatous germ cell tumours. *Ann Oncol* 2005; 16: 1915–1920.
5. Ondrusova M, Waczulikova I, Lehotska V, *et al.* Management of clinical stage I nonseminomatous germ cell testicular tumors: a 25-year single-center experience. *Clin Genitourin Cancer* 2017; 15: e1015–e1019.
6. Nappi L, Nichols CR and Kollmannsberger CK. New treatments for stage I testicular cancer. *Clin Adv Hematol Oncol* 2017; 15: 626–631.
7. Kollmannsberger C, Tandstad T, Bedard PL, *et al.* Patterns of relapse in patients with clinical stage I testicular cancer managed with active surveillance. *J Clin Oncol* 2015; 33: 51–57.
8. Honecker F, Aparicio J, Berney D, *et al.* ESMO Consensus Conference on testicular germ cell cancer: diagnosis, treatment and follow-up. *Ann Oncol* 2018; 29: 1658–1686.
9. Gilligan T, Lin DW, Aggarwal R, *et al.* Testicular cancer, version 2.2020, NCCN clinical practice guidelines in oncology. *J Natl Compr Canc Netw* 2019; 17: 1529–1554.
10. Hamilton RJ, Nayan M, Anson-Cartwright L, *et al.* Treatment of relapse of clinical stage I nonseminomatous germ cell tumors on surveillance. *J Clin Oncol* 2019; 37: 1919–1926.

11. Huddart RA and Reid AM. Adjuvant therapy for stage IB germ cell tumors: one versus two cycles of BEP. *Adv Urol* 2018; 2018: 8781698.
12. Williams SD, Stablein DM, Einhorn LH, *et al.* Immediate adjuvant chemotherapy versus observation with treatment at relapse in pathological stage II testicular cancer. *N Engl J Med* 1987; 317: 1433–1438.
13. Haugnes HS, Bosl GJ, Boer H, *et al.* Long-term and late effects of germ cell testicular cancer treatment and implications for follow-up. *J Clin Oncol* 2012; 30: 3752–3763.
14. Suarez-Ibarrola R, Abufaraj M and Shariat SF. Intermediate and long-term complications associated with adjuvant chemotherapy for stage I germ cell tumor patients. *Curr Opin Urol* 2018; 28: 485–490.
15. Maroto P, Anguera G and Martin C. Long-term toxicity of the treatment for germ cell-cancer. A review. *Crit Rev Oncol Hematol* 2018; 121: 62–67.
16. Cullen MH, Stenning SP, Parkinson MC, *et al.* Short-course adjuvant chemotherapy in high-risk stage I nonseminomatous germ cell tumors of the testis: a Medical Research Council report. *J Clin Oncol* 1996; 14: 1106–1113.
17. Chovanec M, Hanna N, Cary KC, *et al.* Management of stage I testicular germ cell tumours. *Nat Rev Urol* 2016; 13: 663–673.
18. Oliver RT, Raja MA, Ong J, *et al.* Pilot study to evaluate impact of a policy of adjuvant chemotherapy for high risk stage I malignant teratoma on overall relapse rate of stage I cancer patients. *J Urol* 1992; 148: 1453–1455; discussion 1455–1456.
19. Vidal AD, Thalmann GN, Karamitopoulou-Diamantis E, *et al.* Long term outcome of patients with clinical stage I high-risk nonseminomatous germ cell tumors 15 years after one adjuvant cycle of Bleomycin, Etoposide and Cisplatin chemotherapy. *Ann Oncol* 2015; 26: 374–377.
20. Albers P, Siener R, Krege S, *et al.* Randomized phase III trial comparing retroperitoneal lymph node dissection with one course of bleomycin and etoposide plus cisplatin chemotherapy in the adjuvant treatment of clinical stage I Nonseminomatous testicular germ cell tumors: AUO trial AH 01/94 by the German Testicular Cancer Study Group. *J Clin Oncol* 2008; 26: 2966–2972.
21. Gilbert DC, Norman AR, Nicholl J, *et al.* Treating stage I nonseminomatous germ cell tumours with a single cycle of chemotherapy. *BJU Int* 2006; 98: 67–69.
22. Tandstad T, Ståhl O, Håkansson U, *et al.* One course of adjuvant BEP in clinical stage I nonseminoma mature and expanded results from the SWENOTECA group. *Ann Oncol* 2014; 25: 2167–2172.
23. Cullen M, Huddart R, Joffe J, *et al.* The 111 study: a single-arm, phase 3 trial evaluating one cycle of bleomycin, etoposide, and cisplatin as adjuvant chemotherapy in high-risk, stage I nonseminomatous or combined germ cell tumours of the testis. *Eur Urol* 2020; 77: 344–351.
24. Hiester A, Fingerhut A, Niegisch G, *et al.* Late toxicities and recurrences in patients with clinical stage I nonseminomatous germ cell tumors after 1 cycle of adjuvant BEP versus primary retroperitoneal lymph node dissection – a 13-year follow-up analysis of a phase III trial cohort. *Eur J Cancer* 2021; 155: 64–72.
25. Kliesch S, Schmidt S, Wilborn D, *et al.* Management of germ cell tumours of the testis in adult patients. German clinical practice guideline part I: epidemiology, classification, diagnosis, prognosis, fertility preservation, and treatment recommendations for localized stages. *Urol Int* 2021; 105: 169–180.
26. Albers P, Albrecht W, Algaba F, *et al.* Guidelines on testicular cancer: 2015 update. *Eur Urol* 2015; 68: 1054–1068.
27. Davis S, Wright PW, Schulman SF, *et al.* Participants in prospective, randomized clinical trials for resected non-small cell lung cancer have improved survival compared with nonparticipants in such trials. *Cancer* 1985; 56: 1710–1718.
28. Rothwell PM. External validity of randomised controlled trials: ‘to whom do the results of this trial apply?’. *Lancet* 2005; 365: 82–93.
29. Antman K, Amato D, Wood W, *et al.* Selection bias in clinical trials. *J Clin Oncol* 1985; 3: 1142–1147.
30. Bero LA, Grilli R, Grimshaw JM, *et al.* Closing the gap between research and practice: an overview of systematic reviews of interventions to promote the implementation of research findings. *Br Med J* 1998; 317: 465–468.
31. Fortin M, Dionne J, Pinho G, *et al.* Randomized controlled trials: do they have external validity for patients with multiple comorbidities? *Ann Fam Med* 2006; 4: 104–108.
32. Kiely BE and Stockler MR. Accentuating the positive: do trials give unrealistic expectations of long-term survival? *JNCI Cancer Spectr* 2019; 3: pkz018.

33. Sun M, Abdollah F, Liberman D, *et al.* Racial disparities and socioeconomic status in men diagnosed with testicular germ cell tumors: a survival analysis. *Cancer* 2011; 117: 4277–4285.
34. Huang MM, Cheaib JG, Su ZT, *et al.* Assessing quality of care in the diagnosis and treatment of early-stage testicular cancer: a critical review and summary. *Urol Oncol* 2021; 39: 400–408.
35. Chertack N, Ghandour RA, Singla N, *et al.* Overcoming sociodemographic factors in the care of patients with testicular cancer at a safety net hospital. *Cancer* 2020; 126: 4362–4370.
36. Macleod LC, Cannon SS, Ko O, *et al.* Disparities in access and regionalization of care in testicular cancer. *Clin Genitourin Cancer* 2018; 16: e785–e793.
37. Wymer KM, Pearce SM, Harris KT, *et al.* Adherence to National Comprehensive Cancer Network® guidelines for testicular cancer. *J Urol* 2017; 197: 684–689.
38. Paffenholz P, Heidegger IM, Kuhr K, *et al.* Non-guideline-concordant treatment of testicular cancer is associated with reduced relapse-free survival. *Clin Genitourin Cancer* 2017; 16: e243–e250.
39. Karim S, Wei X, Leveridge MJ, *et al.* Delivery of chemotherapy for testicular cancer in routine practice: a population-based study. *Urol Oncol* 2018; 37: 183.e17–183.e24.
40. Biggs ML and Schwartz SM. Differences in testis cancer survival by race and ethnicity: a population-based study, 1973–1999 (United States). *Cancer Causes Control* 2004; 15: 437–444.
41. Fossá SD, Cvancarova M, Chen L, *et al.* Adverse prognostic factors for testicular cancer-specific survival: a population-based study of 27,948 patients. *J Clin Oncol* 2011; 29: 963–970.
42. Markt SC, Lago-Hernandez CA, Miller RE, *et al.* Insurance status and disparities in disease presentation, treatment, and outcomes for men with germ cell tumors. *Cancer* 2016; 122: 3127–3135.
43. DeRouen MC, McKinley M, Shah SA, *et al.* Testicular cancer in Hispanics: incidence of subtypes over time according to neighborhood sociodemographic factors in California. *Cancer Causes Control* 2020; 31: 713–721.
44. Murphy CC, Lupo PJ, Roth ME, *et al.* Disparities in cancer survival among adolescents and young adults: a population-based study of 88,000 patients. *J Natl Cancer Inst* 2021; 113: 1074–1083.
45. Woldu SL, Matulay JT, Clinton TN, *et al.* Impact of hospital case volume on testicular cancer outcomes and practice patterns. *Urol Oncol* 2018; 36: 14.e7–14.e15.
46. Tandstad T, Kollmannsberger CK, Roth BJ, *et al.* Practice makes perfect: the rest of the story in testicular cancer as a model curable neoplasm. *J Clin Oncol* 2017; 35: 3525–3528.
47. Corti Ortíz D, Fonerón Burgos A and Troncoso Schifferli L. [Treatment of stage I nonseminomatous testicular cancer with one cycle of adjuvant chemotherapy]. *Actas Urol Esp* 1997; 21: 961–963 (in Spanish).
48. Gumus M, Bilici A, Odabas H, *et al.* Outcomes of surveillance versus adjuvant chemotherapy for patients with stage IA and IB nonseminomatous testicular germ cell tumors. *World J Urol* 2016; 35: 1103–1110.
49. Fischer S, Tandstad T, Cohn-Cedermark G, *et al.* Outcome of men with relapses after adjuvant bleomycin, etoposide, and cisplatin for clinical stage I nonseminoma. *J Clin Oncol* 2019; 38: 1322–1331.
50. Nichols C, Nappi L, Kollmannsberger C, *et al.* Zero, some chemotherapy game in early-stage germ cell tumors. *J Clin Oncol* 2020; 38: 2214–2215.
51. Berney DM, Comperat E, Feldman DR, *et al.* Datasets for the reporting of neoplasia of the testis: recommendations from the International Collaboration on Cancer Reporting. *Histopathology* 2019; 74: 171–183.
52. Stephenson AJ, Bosl GJ, Motzer RJ, *et al.* Retroperitoneal lymph node dissection for nonseminomatous germ cell testicular cancer: impact of patient selection factors on outcome. *J Clin Oncol* 2005; 23: 2781–2788.
53. Booth CM, Karim S and Mackillop WJ. Real-world data: towards achieving the achievable in cancer care. *Nat Rev Clin Oncol* 2019; 16: 312–325.
54. Gillissen S, Sauvé N, Collette L, *et al.* Predicting outcomes in men with metastatic nonseminomatous germ cell tumors (NSGCT): results from the IGCCCG Update Consortium. *J Clin Oncol* 2021; 39: 1563–1574.
55. Dieckmann KP, Gerl A, Witt J, *et al.* Myocardial infarction and other major vascular events during chemotherapy for testicular cancer. *Ann Oncol* 2010; 21: 1607–1611.
56. Cameron AC, McMahon K, Hall M, *et al.* Comprehensive characterization of the vascular effects of cisplatin-based chemotherapy in patients with testicular cancer. *JACC Cardiooncol* 2020; 2: 443–455.