

Nondiffusive fluxes in a Brownian system with Lorentz force

I. Abdoli¹, H. D. Vuijk¹, J. U. Sommer^{1,2}, J. M. Brader³, and A. Sharma^{1,2,*}

¹Leibniz-Institut für Polymerforschung Dresden, Institut Theorie der Polymere, 01069 Dresden, Germany

²Technische Universität Dresden, Institut für Theoretische Physik, 01069 Dresden, Germany

³Department de Physique, Université de Fribourg, CH-1700 Fribourg, Switzerland



(Received 8 August 2019; published 14 January 2020)

The Fokker-Planck equation provides a complete statistical description of a particle undergoing random motion in a solvent. In the presence of Lorentz force due to an external magnetic field, the Fokker-Planck equation picks up a tensorial coefficient, which reflects the anisotropy of the particle's motion. This tensor, however, cannot be interpreted as a diffusion tensor; there are antisymmetric terms which give rise to fluxes perpendicular to the density gradients. Here, we show that for an inhomogeneous magnetic field these nondiffusive fluxes have finite divergence and therefore affect the density evolution of the system. Only in the special cases of a uniform magnetic field or carefully chosen initial condition with the same full rotational symmetry as the magnetic field can these fluxes be ignored in the density evolution.

DOI: [10.1103/PhysRevE.101.012120](https://doi.org/10.1103/PhysRevE.101.012120)

I. INTRODUCTION

While the effect of the Lorentz force on the properties of materials has been thoroughly studied in the context of solid-state physics, much less is known about its influence on soft-matter systems which are dominated by overdamped dynamics. This becomes particularly interesting in light of the recent finding that the Lorentz force induces a particle flux perpendicular to density gradients, thus preventing a diffusive description of the dynamics [1,2]. In this paper, we study the unusual fluxes induced by the Lorentz force and their effect on the nonequilibrium dynamics of the system.

Consider a single charged Brownian particle in a magnetic field $\mathbf{B}(\mathbf{r})$. Let \mathbf{n} be the unit vector in the direction of the magnetic field, and $B(\mathbf{r})$ be the magnitude. Due to the magnetic field, the particle is subjected to the Lorentz force $q\mathbf{v} \times \mathbf{B}(\mathbf{r})$, where \mathbf{v} is its velocity. The dynamics of the particle are described by the following Langevin equation [3]:

$$\dot{\mathbf{r}}(t) = \mathbf{v}(t), \quad (1)$$

$$m\dot{\mathbf{v}}(t) = -\gamma\mathbf{v} + q\mathbf{v} \times \mathbf{B}(\mathbf{r}) + \sqrt{2\gamma k_B T} \boldsymbol{\xi}(t),$$

where \mathbf{r} is the position of the particle, m is the mass of the particle, q is the charge, γ is the friction coefficient, k_B is the Boltzmann constant, T is the temperature, and $\boldsymbol{\xi}(t)$ is Gaussian white noise with zero mean and time correlation $\langle \boldsymbol{\xi}(t) \boldsymbol{\xi}^T(t') \rangle = \mathbf{1} \delta(t - t')$. One can rewrite the Langevin equation in terms of the position-dependent matrix $\boldsymbol{\Gamma}(\mathbf{r}) = \gamma\mathbf{1} + qB(\mathbf{r})\mathbf{M}$ as

$$m\dot{\mathbf{v}}(t) = -\boldsymbol{\Gamma}(\mathbf{r})\mathbf{v} + \sqrt{2\gamma k_B T} \boldsymbol{\xi}(t), \quad (2)$$

where \mathbf{M} is a matrix with elements $M_{\alpha\beta} = -\epsilon_{\alpha\beta\nu} n_\nu$, with $\epsilon_{\alpha\beta\nu}$ the totally antisymmetric Levi-Civita symbol in three

dimensions and n_ν is the ν component of \mathbf{n} for the Cartesian index ν .

Often one is interested in the slow degree of freedom, which in this case is the position of the particle. The timescale at which velocity correlations decay, $\tau = m/\gamma$, is generally much smaller than the diffusion timescale of the particle. Since for times $t \gg \tau$ the velocity decouples with the position, an equation for the position degrees of freedom alone can be obtained. This equation, referred to as the overdamped equation, is obtained by taking the small-mass limit of Eq. (1) [4–7]. It has become common practice to start with the overdamped equation of motion as the model of the system under study [8–13]. However, the overdamped limit of Eq. (1) [5,14,15] with Lorentz force is a special case. Although it describes the position statistics of the particle accurately, it is not suited for calculating velocity-dependent quantities such as flux and entropy production [2]. Thus, from a simulations perspective, even in the small mass limit, one must use Eq. (1) to calculate position and fluxes.

Whereas the Langevin equations are convenient for simulations, a statistical description is often preferred for theoretical analysis. To this end one derives the Fokker-Planck equation for the position degrees of freedom, which for a Brownian particle subjected to inhomogeneous Lorentz force, is given as [2,5]

$$\frac{\partial P(\mathbf{r}, t)}{\partial t} = \nabla \cdot [\mathbf{D}(\mathbf{r}) \nabla P(\mathbf{r}, t)], \quad (3)$$

where $P(\mathbf{r}, t)$ is the probability density and the tensor $\mathbf{D}(\mathbf{r})$ is given as

$$\begin{aligned} \mathbf{D}(\mathbf{r}) &= D \left[\left(\mathbf{1} + \frac{\kappa^2(\mathbf{r})}{1 + \kappa^2(\mathbf{r})} \mathbf{M}^2 \right) - \frac{\kappa(\mathbf{r})}{1 + \kappa^2(\mathbf{r})} \mathbf{M} \right] \\ &= \mathbf{D}_s(\mathbf{r}) + \mathbf{D}_a(\mathbf{r}), \end{aligned} \quad (4)$$

where $D = k_B T / \gamma$ is the coefficient of a freely diffusing particle and $\kappa(\mathbf{r}) = qB(\mathbf{r}) / \gamma$ is a parameter quantifying the

*sharma@ipfdd.de

strength of Lorentz force relative to frictional force [16]. \mathbf{D}_s and \mathbf{D}_a are the symmetric and antisymmetric parts of the tensor \mathbf{D} , which refer to the first and second terms of Eq. (3), respectively. The flux in the system is [1,2]

$$\mathbf{J}(\mathbf{r}, t) = -\mathbf{D}(\mathbf{r})\nabla P(\mathbf{r}, t). \quad (5)$$

The symmetric tensor \mathbf{D}_s is the diffusion tensor and gives rise to the diffusive fluxes $\mathbf{J}_s(\mathbf{r}, t) = -\mathbf{D}_s(\mathbf{r})\nabla P(\mathbf{r}, t)$ along the density gradient. It is known that the motion of a Brownian particle is anisotropic in the presence of magnetic field [17]. The components of \mathbf{D}_s along and perpendicular to the field are D and $D/(1 + \kappa^2)$, respectively.

The Fokker-Planck equation (3) is unusual due to the presence of the antisymmetric tensor \mathbf{D}_a . This tensor captures the physical property of the Lorentz force that it curves the trajectory of a moving charge without performing work on it. More precisely, there exist fluxes $\mathbf{J}_a(\mathbf{r}, t) = -\mathbf{D}_a(\mathbf{r})\nabla P(\mathbf{r}, t)$, which are perpendicular to the density gradient [1,2]. The presence of these nondiffusive fluxes makes the dynamics fundamentally different from purely diffusive. In this paper, we study the effect of these fluxes on the nonequilibrium dynamics of a system whose probability density evolves according to Eq. (3). We show that for an inhomogeneous magnetic field, nondiffusive fluxes can significantly affect the density evolution. This is the main result of the paper.

Only in the special cases of the uniform magnetic field or carefully chosen initial condition with the same full rotational symmetry as the magnetic field, can these fluxes be ignored in the dynamics of the probability distribution.

We take the following approach: We initialize the system into a nonequilibrium configuration and let it evolve in time according to Eq. (3). We numerically obtain the total fluxes, diffusive fluxes, and nondiffusive fluxes. We then only retain the symmetric part of the tensor \mathbf{D} and let the system evolve in time. Since in the latter the nondiffusive fluxes are ignored, a comparison of the density evolution provides insight into the role of these fluxes in the dynamical evolution of the system.

II. NONDIFFUSIVE FLUXES IN MAGNETIC FIELD

Here we consider a system with reflecting boundaries. The particles cannot escape the confining geometry \mathbf{R} , hence we require $\mathbf{n}_b \cdot \mathbf{J}(\mathbf{r}, t) = 0$ for $\mathbf{r} \in \mathcal{S}$, the boundary of \mathbf{R} , where \mathbf{n}_b is normal to \mathcal{S} [4]. The magnetic field is applied in the z direction. Because the Lorentz force does not affect the motion in the z direction, we restrict our analysis to the motion in the xy plane. This effectively reduces the problem to two dimensions. All the results are obtained by numerically solving the Fokker-Planck equation (3). Using a central difference method we discretize the Fokker-Planck equation as follows:

$$\begin{aligned} P(i\Delta x, j\Delta y; t + \Delta t) - P(i\Delta x, j\Delta y; t) = & -\frac{\Delta t}{2\Delta x} \{J_x[(i+1)\Delta x, j\Delta y; t] - J_x[(i-1)\Delta x, j\Delta y; t]\} \\ & + \frac{\Delta t}{2\Delta y} \{J_y[i\Delta x, (j+1)\Delta y; t] - J_y[i\Delta x, (j-1)\Delta y; t]\}, \end{aligned} \quad (6)$$

where i and j are integers, Δx and Δy are, respectively, the grid sizes in x and y directions, and Δt is the integration time step which is fixed to $\Delta t = 5 \times 10^{-5} \tau$ in this paper. Here $\tau = \gamma/k_B T$, which is the time the particle takes to diffuse over a unit distance. At the boundaries of the system we use forward and backward differences. Our system is a rectangular box of size $L_x \times L_y$, where L_x and L_y are the lengths in the x and y directions, respectively. Similarly, the fluxes are calculated numerically as

$$\begin{aligned} J_x(i\Delta x, j\Delta y; t) = & -\frac{D_{xx}}{2\Delta x} \{P[(i+1)\Delta x, j\Delta y; t] - P[(i-1)\Delta x, j\Delta y; t]\} \\ & -\frac{D_{xy}}{2\Delta y} \{P[i\Delta x, (j+1)\Delta y; t] - P[i\Delta x, (j-1)\Delta y; t]\}, \end{aligned} \quad (7a)$$

$$\begin{aligned} J_y(i\Delta x, j\Delta y; t) = & -\frac{D_{yy}}{2\Delta y} \{P[(i+1)\Delta x, j\Delta y; t] - P[(i-1)\Delta x, j\Delta y; t]\} \\ & -\frac{D_{yx}}{2\Delta x} \{P[i\Delta x, (j+1)\Delta y; t] - P[i\Delta x, (j-1)\Delta y; t]\}. \end{aligned} \quad (7b)$$

Here $D_{\alpha\beta}$ is the element of tensor \mathbf{D} , where α and β are x and y components of \mathbf{r} . For the numerical calculations we fix the diffusion coefficient $D = 1$ and $\Delta x = \Delta y = 0.01$ throughout this paper.

After initializing the system into a nonequilibrium configuration, we let it evolve in time according to Eq. (3) and numerically obtain the fluxes (i.e., the total fluxes, and diffusive and nondiffusive fluxes) in the system for the applied magnetic field. Experimentally realizable magnetic fields are likely to have more complicated shapes; however, this does not change the conclusions of this study.

A. Constant magnetic field

We first consider a system subjected to a constant magnetic field. The particles are initially uniformly distributed in a disk of radius 1 centered at the origin. For a constant magnetic field only the diffusive fluxes contribute to the time evolution of the probability density. This is due to the antisymmetry of \mathbf{D}_a which implies that $\nabla \cdot \mathbf{J}_a(\mathbf{r}, t) = \mathbf{D}_a \nabla^2 P(\mathbf{r}, t) = 0$, that is, the nondiffusive fluxes have a zero divergence.

Figures 1(a) and 1(b) show, respectively, the results for the density and fluxes in the system at time $t = 1.0$. Clearly the flux has radial and rotational components. The radial

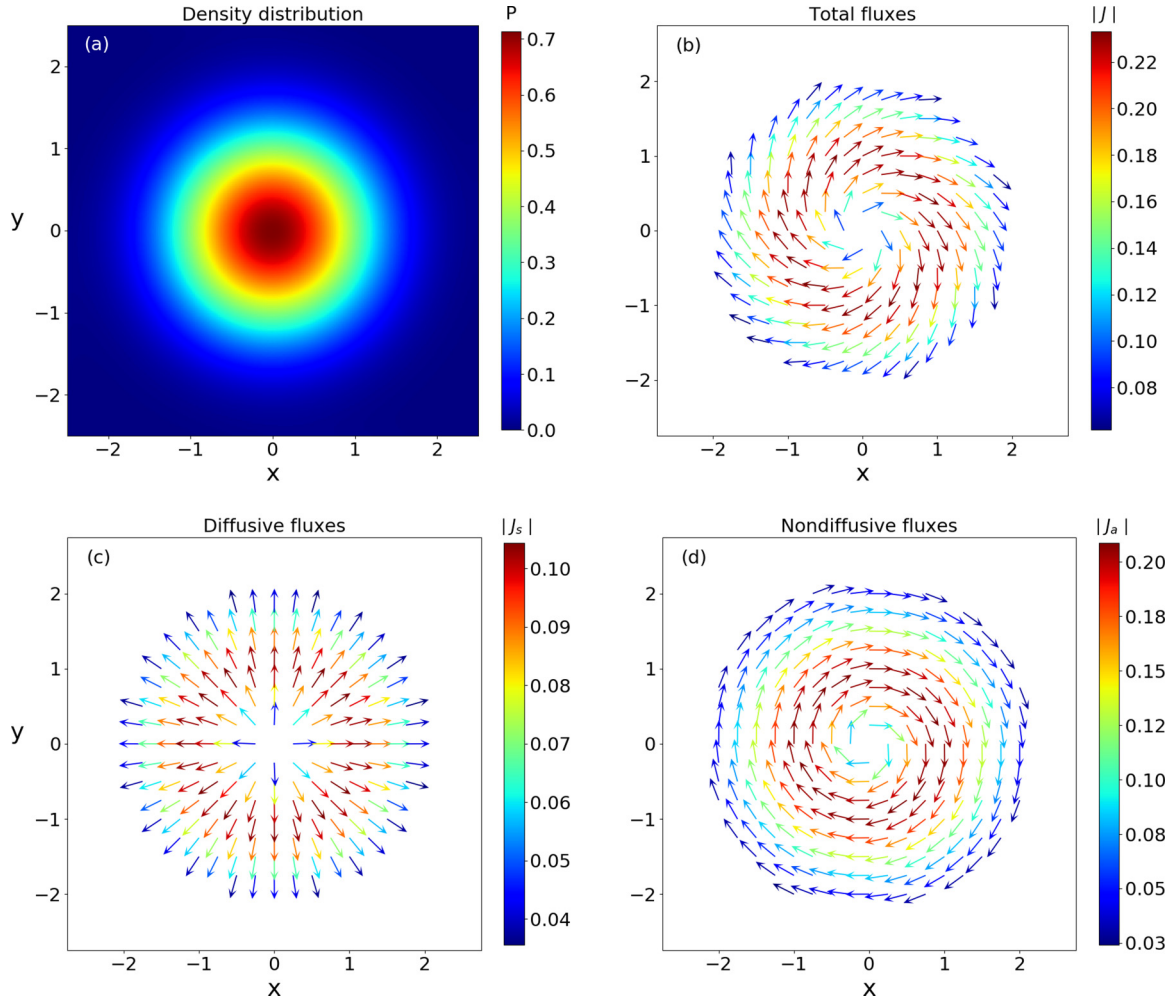


FIG. 1. Constant magnetic field. (a) Density distribution in the system at time $t = 1.0$ obtained from Eq. (3) with $\kappa = 2$. The system size is 5×5 . (b) Total fluxes in the system [Eq. (5)]. The decomposition of the total flux into diffusive and nondiffusive components is shown in (c) and (d), respectively. The nondiffusive fluxes are perpendicular to the density gradients and purely rotational. Since these fluxes are divergence-free, they do not affect the time evolution of the probability density. The direction of the fluxes is shown by the arrows; the magnitude is color coded.

component corresponds to the diffusive fluxes in the system which exist along the density gradients [see Fig. 1(c)]. The rotational component corresponds to the nondiffusive fluxes which are perpendicular to the density gradients [see Fig. 1(d)]. Since these nondiffusive fluxes are divergence-free, they do not affect the density evolution. This, however, does not mean that the dynamics of this system are the same as that of a system with only the symmetric tensor. In fact, that there are nondiffusive fluxes present in the system, makes the dynamics distinct from a purely diffusive system. For the particular case of constant magnetic field, nondiffusive fluxes can be ignored in studying the density evolution in the system. This has been previously shown by some of the coauthors of this study in Ref. [2] by integrating the Langevin equation (1) with a small mass. Interestingly, the nondiffusive fluxes are reminiscent of the Corbino effect in conductors [18] [see Fig. 1(d)]: When a disk carrying radial current is subjected to magnetic field in the direction perpendicular to its plane (additional) circular fluxes are generated. In the Supplemental Material [19] we show a movie of a system relaxing towards the equilibrium stationary state

with and without Lorentz force. The presence of magnetic field slows down the relaxation dynamics due to the reduced diffusivity.

B. Radially symmetric magnetic field

Figure 2 shows the density and fluxes in the system at time $t = 1.0$ for a radially symmetric, Gaussian-shaped magnetic field centered at the origin. The particles are initially uniformly distributed in a disk of radius 1 centered at the origin. With this choice, the initial condition and the magnetic field have the same symmetry. This symmetry implies that $P(\mathbf{r}, t) \equiv P(r, t)$, where r is the distance from the origin. It then follows that $\nabla \cdot \mathbf{J}_a(\mathbf{r}, t) = \nabla \mathbf{D}_a \cdot \nabla P = 0$ because $\nabla \mathbf{D}_a(\mathbf{r})$ is perpendicular to $\nabla P(r, t)$. This means that despite a spatially inhomogeneous magnetic field, the nondiffusive fluxes have no contribution to the evolution of the probability density. In this case, one obtains the same density distribution in the system if one considers only the symmetric part of the tensor \mathbf{D} . The fluxes, shown in Fig. 2(b) are decomposed into diffusive and nondiffusive parts in Figs. 2(c)

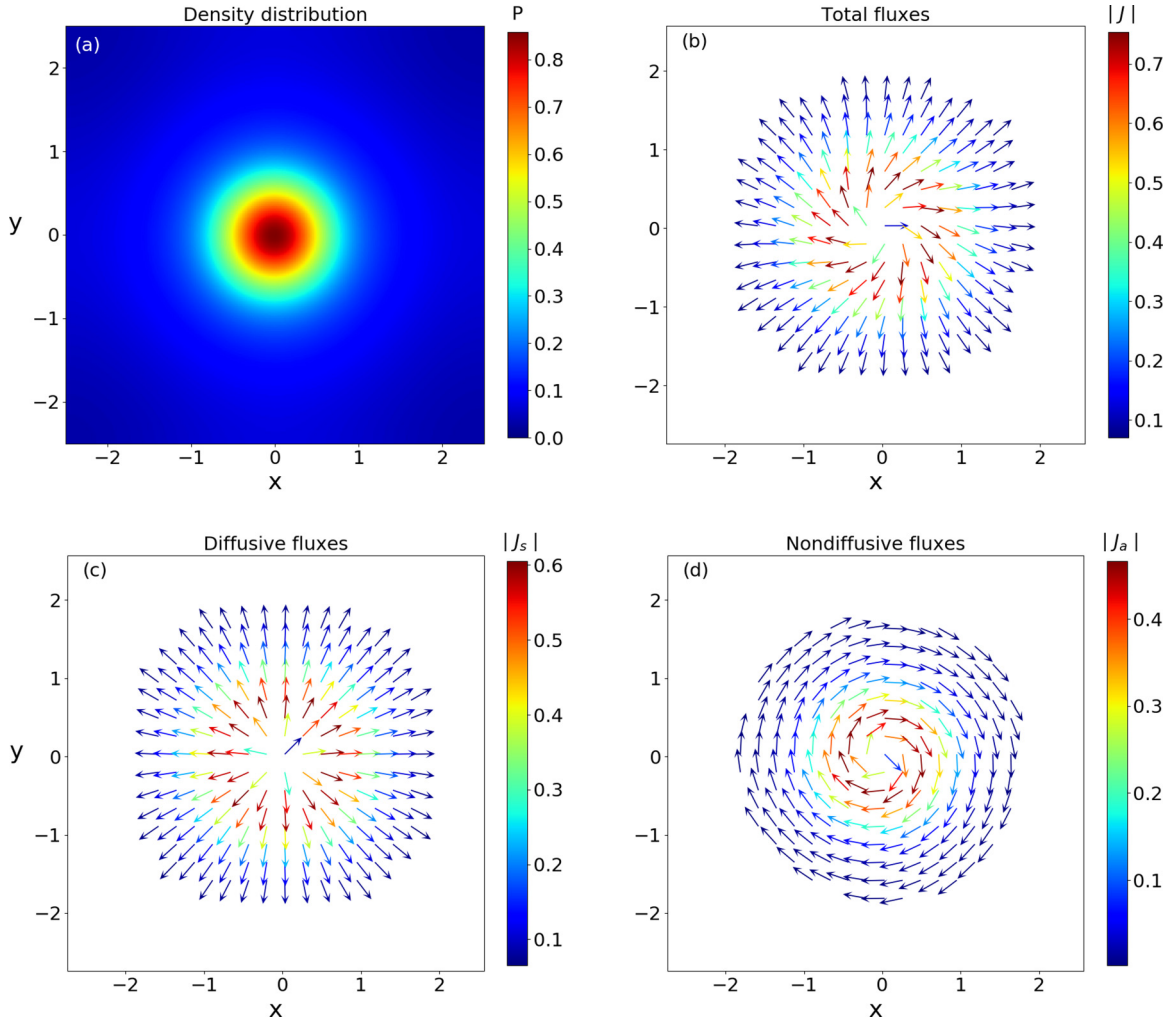


FIG. 2. Radially symmetric magnetic field. (a) Density distribution in the system at time $t = 1.0$ obtained from Eq. (3) with $\kappa = 4e^{-r^2}$, where r is the distance from the origin. The system size is 5×5 . (b) Total fluxes in the system [Eq. (5)]. The decomposition of the total flux into diffusive and nondiffusive components is shown in (c) and (d), respectively. In this special case, the nondiffusive fluxes do not influence the density evolution. This implies that on retaining only the symmetric part of \mathbf{D} in Eq. (3), the same density distribution is obtained as in (a). The direction of the fluxes is shown by the arrows; the magnitude is color coded.

and 2(d), respectively. In this case the time evolution of the density distribution is not influenced by the nondiffusive fluxes.

We now show that on slightly displacing the initial configuration with respect to the magnetic field, the nondiffusive fluxes affect the time evolution of the density distribution in the system. Whereas the applied magnetic field is the same as in the previous case, the center of the (circular) initial condition is displaced to $(-0.3, -0.3)$. Figures 3(a) and 3(b) show the density of the system at time $t = 4.0$ obtained from solving Eq. (3) with and without the antisymmetric part of \mathbf{D} , respectively. The difference between these two is shown in Fig. 3(c), which shows that the nondiffusive fluxes affect the density evolution. The total flux in the system and its decomposition into diffusive and nondiffusive fluxes are shown in Figs. 3(d) and 3(e). In the Supplemental Material [19] we show videos depicting how the system relaxes towards the equilibrium.

C. Rectangular initial distribution

Until now we have considered an inhomogeneous magnetic field with radial symmetry. We showed that with carefully chosen initial conditions, one can ignore nondiffusive fluxes in the density evolution. We now consider the case in which the magnetic field varies along the y direction $\kappa(y) = -10 \sin(\frac{\pi y}{4})$. The particles are initially uniformly distributed in the rectangular region $x \in [-1.5, 1.5]$, $y \in [-1, 1]$ in a system of size 5×4 . Figure 4 shows the density and fluxes at time $t = 1.0$ obtained from the full dynamics in (a) and (d)–(f) and from diffusive dynamics in (b), respectively. The total fluxes shown in Fig. 4(d), obtained from full dynamics, however, appear to be predominantly nondiffusive in nature. As can be clearly seen in Fig. 4(e), diffusive fluxes are parallel to the density gradient. The effect of the nondiffusive fluxes is strikingly evident in the density distribution [see Fig. 4(c)]: It becomes distorted under full dynamics in contrast to (b) which remains rectangular.

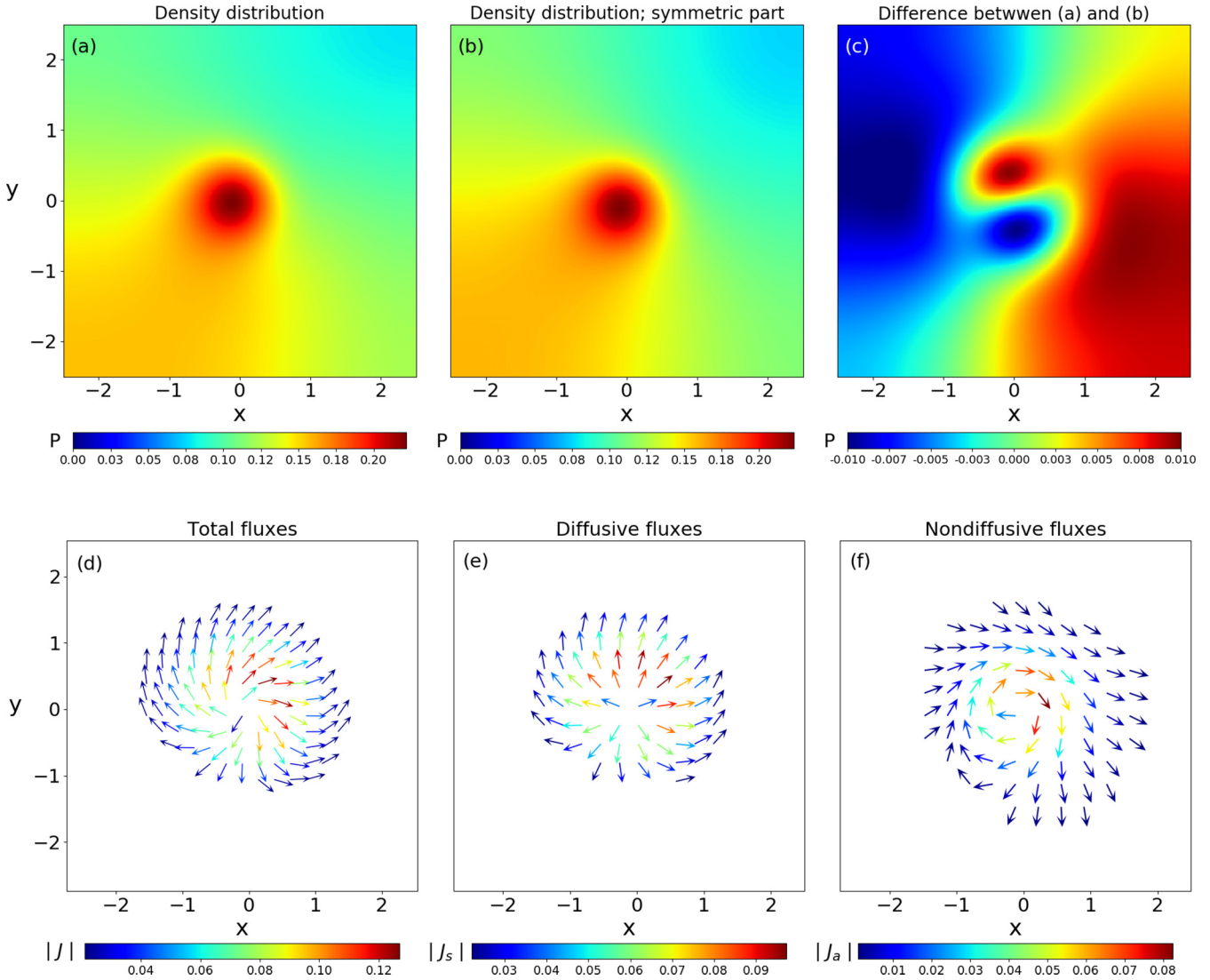


FIG. 3. Radially symmetric magnetic field (same as in Fig. 2) and displaced initial condition. Density and fluxes in the system at time $t = 4.0$ obtained from Eq. (3) with $\kappa = 4e^{-r^2}$ are shown in (a) and (d)–(f), respectively. The system size is 5×5 . (b) The density distribution obtained from dynamics in which only the symmetric part of the tensor is retained. We have slightly displaced the circular initial condition from the origin (in Fig. 2) to $(-0.3, -0.3)$ here. That the two systems have different density distribution is due to the nondiffusive fluxes. This difference between the two density distributions is shown in (c). The decomposition of the total flux into diffusive and nondiffusive components is shown in (e) and (f), respectively. Note that for better visualization, we have chosen a larger time here than the previous case. The direction of the fluxes is shown by the arrows; the magnitude is color coded.

Note that the equilibrium density distribution of the system is independent of the applied magnetic field. For any chosen initial configuration and magnetic field, a uniform probability distribution is obtained in the long-time limit. We note that this is valid only for a time-independent magnetic field. A time varying magnetic field will induce an electric field which gives rise to (a) dynamics different from the time-independent fields and (b) a nonequilibrium steady state in the long-time limit [20,21].

III. DISCUSSION AND CONCLUSION

A charged, Brownian particle, subjected to Lorentz force due to an external magnetic field performs anisotropic motion; the rate of diffusion in the plane perpendicular to the

magnetic field is reduced, whereas the diffusion along the direction of the magnetic field is unchanged. On a statistical level, the anisotropy is encoded in the tensorial coefficient of the Fokker-Planck equation for the probability density of the particle. The tensor, however, is not a diffusion tensor due to the presence of antisymmetric terms [1,2]. This feature, which is unique to Lorentz force, gives rise to unusual nondiffusive fluxes in the system. Density gradients in the system not only result in diffusive fluxes along the gradient but also fluxes perpendicular to the gradients. In this paper we studied how these nondiffusive fluxes affect the dynamics of the system. We showed that these fluxes make the dynamics distinct from purely diffusive dynamics. In particular, we showed that for an inhomogeneous magnetic field these nondiffusive fluxes have finite divergence

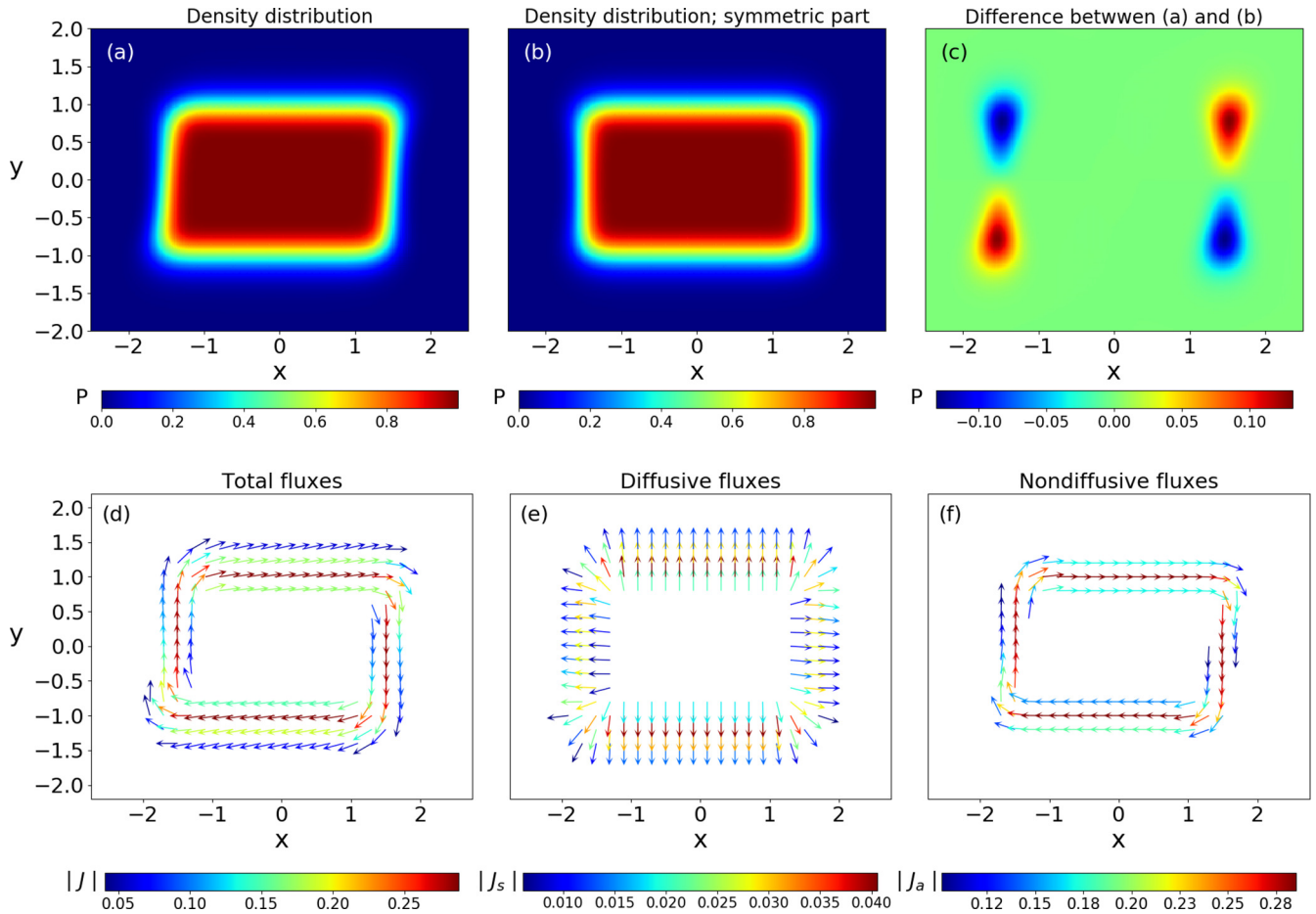


FIG. 4. Magnetic field varying along y and rectangular initial distribution. Density and fluxes in the system at time $t = 1.0$ obtained from Eq. (3) with $\kappa(y) = -10 \sin(\pi y/4)$ are shown in (a) and (d)–(f), respectively. The particles are initially uniformly distributed in the region $x \in [-1.5, 1.5]$, $y \in [-1, 1]$ in a system of size 5×4 . The density distribution becomes distorted due to the nondiffusive fluxes. (b) The density distribution obtained from dynamics in which only the symmetric part of the tensor is retained. Whereas the diffusive fluxes in (e) are perpendicular to the density gradient, nondiffusive fluxes, shown in (f), are parallel to the density gradient. The total fluxes, shown in (d), are predominantly nondiffusive. The direction of the fluxes is shown by the arrows; the magnitude is color coded.

and therefore affect the time evolution of the density. Only in the special cases of a uniform magnetic field or initial condition with the same full rotational symmetry as the magnetic field, can these fluxes be ignored in the density evolution.

There are several interesting directions in which this work can be extended. The Fokker-Planck approach can be generalized to a system of interacting particles subjected to an inhomogeneous magnetic field. It is then straightforward to

derive a coarse-grained equation for the one-body density and its time evolution within the framework of dynamical density functional theory [22,23]. It will be interesting to study how nondiffusive fluxes affect the phase transition dynamics of a fluid system. It has recently been shown that Lorentz force can induce an unusual nonequilibrium steady state in a system of active Brownian particles [16]. It would be interesting to study the dynamics leading to the nonequilibrium steady state in such a system.

- [1] H.-M. Chun, X. Durang, and J. D. Noh, Emergence of nonwhite noise in Langevin dynamics with magnetic Lorentz force, *Phys. Rev. E* **97**, 032117 (2018).
 [2] H. D. Vuijk, J. M. Brader, and A. Sharma, Anomalous fluxes in overdamped Brownian dynamics with Lorentz force, *J. Stat. Mech.: Theory Exp.* (2019) 063203.
 [3] P. Langevin, Sur la théorie du mouvement Brownien, *C. R. Acad. Sci. (Paris)* **146**, 530 (1908).

- [4] C. Gardiner, *Stochastic Methods* (Springer, Berlin, 2009).
 [5] S. Hottovy, A. McDaniel, G. Volpe, and J. Wehr, The Smoluchowski-Kramers limit of stochastic differential equations with arbitrary state-dependent friction, *Commun. Math. Phys.* **336**, 1259 (2015).
 [6] G. Volpe and J. Wehr, Effective drifts in dynamical systems with multiplicative noise: A review of recent progress, *Rep. Prog. Phys.* **79**, 053901 (2016).

- [7] H. D. Vuijk, A. Sharma, D. Mondal, J.-U. Sommer, and H. Merlitz, Pseudochemotaxis in inhomogeneous active Brownian systems, *Phys. Rev. E* **97**, 042612 (2018).
- [8] M. E. Cates and J. Tailleur, When are active Brownian particles and run-and-tumble particles equivalent? Consequences for motility-induced phase separation, *Europhys. Lett.* **101**, 20010 (2013).
- [9] T. F. F. Farage, P. Krinninger, and J. M. Brader, Effective interactions in active Brownian suspensions, *Phys. Rev. E* **91**, 042310 (2015).
- [10] A. Sharma and J. M. Brader, Communication: Green-Kubo approach to the average swim speed in active Brownian systems, *J. Chem. Phys.* **145**, 161101 (2016).
- [11] J. Stenhammar, R. Wittkowski, D. Marenduzzo, and M. E. Cates, Light-induced self-assembly of active rectification devices, *Sci. Adv.* **2**, e1501850 (2016).
- [12] A. Sharma, R. Wittmann, and J. M. Brader, Escape rate of active particles in the effective equilibrium approach, *Phys. Rev. E* **95**, 012115 (2017).
- [13] A. Sharma and J. M. Brader, Brownian systems with spatially inhomogeneous activity, *Phys. Rev. E* **96**, 032604 (2017).
- [14] S. Cerrai and M. Freidlin, Small mass asymptotics for a charged particle in a magnetic field and long-time influence of small perturbations, *J. Stat. Phys.* **144**, 101 (2011).
- [15] M. Freidlin and M. Weber, Perturbations of the motion of a charged particle in a noisy magnetic field, *J. Stat. Phys.* **147**, 565 (2012).
- [16] H. D. Vuijk, J. U. Sommer, H. Merlitz, J. M. Brader, and A. Sharma, Lorentz forces induce inhomogeneity and fluxes in active systems, [arXiv:1908.02577](https://arxiv.org/abs/1908.02577).
- [17] V. Balakrishnan, *Elements of Nonequilibrium Statistical Mechanics* (Ane Books, New Delhi, 2008).
- [18] E. P. Adams, The Hall and Corbino effects, *Proc. Am. Philos. Soc.* **54**, 47 (1915).
- [19] See Supplemental Material at <http://link.aps.org/supplemental/10.1103/PhysRevE.101.012120> for videos showing how a Brownian system with and without Lorentz force relaxes into the equilibrium.
- [20] S. Mondal, S. Das, A. Baura, and B. C. Bag, Fluctuating magnetic field induced resonant activation, *J. Chem. Phys.* **141**, 224101 (2014).
- [21] S. Mondal, A. Baura, S. Das, and B. C. Bag, A generic signature of a fluctuating magnetic field: An additional turnover prior to the Kramers one, *Phys. A: Stat. Mech. Appl.* **502**, 58 (2018).
- [22] A. J. Archer and R. Evans, Dynamical density functional theory and its application to spinodal decomposition, *J. Chem. Phys.* **121**, 4246 (2004).
- [23] H. D. Vuijk, J. M. Brader, and A. Sharma, Effect of anisotropic diffusion on spinodal decomposition, *Soft Matter* **15**, 1319 (2019).