

## Nasal specific IgE correlates to serum specific IgE: first steps towards nasal molecular allergy diagnostic

Mehmet Gökkaya, Vera Schwierzeck, Karisa Thölken, Stephan Knoch, Michael Gerstlauer, Gertrud Hammel, Claudia Traidl-Hoffmann, Stefanie Gilles

### Angaben zur Veröffentlichung / Publication details:

Gökkaya, Mehmet, Vera Schwierzeck, Karisa Thölken, Stephan Knoch, Michael Gerstlauer, Gertrud Hammel, Claudia Traidl-Hoffmann, and Stefanie Gilles. 2020. "Nasal specific IgE correlates to serum specific IgE: first steps towards nasal molecular allergy diagnostic." *Allergy* 75 (7): 1802–5. <https://doi.org/10.1111/all.14228>.



## Correspondence

Margitta Worm, Division of Allergy and Immunology,  
Department of Dermatology, Venereology and Allergology,  
Charité – Universitätsmedizin Berlin, Berlin, Germany.  
Email: margitta.worm@charite.de

## ORCID

Roberta Scarpone <https://orcid.org/0000-0001-9959-1944>

Magdalena Kraft <https://orcid.org/0000-0002-2770-9947>

Margitta Worm <https://orcid.org/0000-0002-3449-1245>

## REFERENCES

1. Sturm GJ, Varga EM, Roberts G, et al. EAACI guidelines on allergen immunotherapy: hymenoptera venom allergy. *Allergy*. 2018;73(4):744-764.
2. Incorvaia C, Frati F, Dell'Albani I, et al. Safety of hymenoptera venom immunotherapy: a systematic review. *Expert Opin Pharmacother*. 2011;12(16):2527-2532. <https://doi.org/10.1517/14656566.2011.616494>.
3. Rueff F, Przybilla B, Bilo MB, et al. Predictors of side effects during the buildup phase of venom immunotherapy for hymenoptera venom allergy: the importance of baseline serum tryptase. *J Allergy Clin Immunol*. 2010;126(1):105-111.e5.
4. Rueff F, Wolf H, Schnitker J, Ring J, Przybilla B. Specific immunotherapy in honeybee venom allergy: a comparative study using aqueous and aluminium hydroxide adsorbed preparations. *Allergy*. 2004;59(6):589-595.
5. Bilo MB, Cinti B, Brianzoni MF, Braschi MC, Bonifazi M, Antonicelli L. Honeybee venom immunotherapy: a comparative study using purified and nonpurified aqueous extracts in patients with normal Basal serum tryptase concentrations. *J Allergy (Cairo)*. 2012; 2012, 1-6.
6. Stoevesandt J, Trautmann A. Lessons from times of shortage: interchangeability of venom preparations and dosing protocols. *Allergy*. 2019;74(7):1392-1395.
7. Worm M. Verträglichkeit der spezifischen Immuntherapie während der Umstellung von lyophilisiertem Wespengift auf ein Depotpräparat. *Allergologie*. 2009;32:143-145.
8. Lee H, Roediger C, Bauer A, Zuberbier T, Worm M. Prospective safety analysis of an ultrarush specific immunotherapy in adults with wasp venom allergy. *Allergy*. 2006;61(10):1237-1238.
9. Mosbech H, Muller U. Side-effects of insect venom immunotherapy: results from an EAACI multicenter study. European academy of allergology and clinical immunology. *Allergy*. 2000;55(11):1005-1010.

DOI: 10.1111/all.14228

## Nasal specific IgE correlates to serum specific IgE: First steps towards nasal molecular allergy diagnostic

To the Editor,

Up to 40% of the European population suffer from respiratory type I hypersensitivity reactions induced by airborne allergens, such as plant pollen, fungal spores, or dust mite feces.<sup>1</sup> Guidelines for the treatment of AR in children recommend causative treatment, that is, allergen-specific immunotherapy (ASIT), as early as possible.<sup>2</sup> Allergy diagnostics is routinely performed by skin prick test (SPT) or blood test for the detection of allergen-specific immunoglobulin E (sIgE). If specific serum IgE is absent despite a positive history of allergic rhinitis, a nasal allergen provocation test is performed to assess local allergic rhinitis (LAR). Recent developments in microchip technology enabled the simultaneous detection of specific IgE levels against 112 individual allergens using only 30 µL of serum. However, SPTs are still often the method of choice when diagnosing young children, as children are typically afraid of needles. This can lead to improper diagnosis, since SPTs are prone to false-positive results due to the unspecified extracts used.<sup>3</sup> The aim of our study was therefore to adopt the Immuno Solid-phase Allergen Chip (ISAC) for nasal fluid as a noninvasive sampling method and to validate the technology as potential novel allergy test. Our analysis

(see details in online supporting information) focused on the most relevant aeroallergens, that is, house dust mite (HDM), Betulaceae trees, including birch, hazel and alder, and grass pollen.<sup>4</sup>

Blood and nasal fluid samples as previously described<sup>5</sup> were obtained from 2 nonsensitized (NS) control subjects and 47 subjects sensitized (Figure S1 and Table S2, online supporting information) to aeroallergens such as birch, hazel, alder, grass pollen, or house dust mite (HDM). Specific IgE levels were measured in sera and nasal fluid by the ImmunoCAP ISAC 112 (Table S1, online supporting information) according to the manufacturer's instruction (Thermo Fischer Scientific).

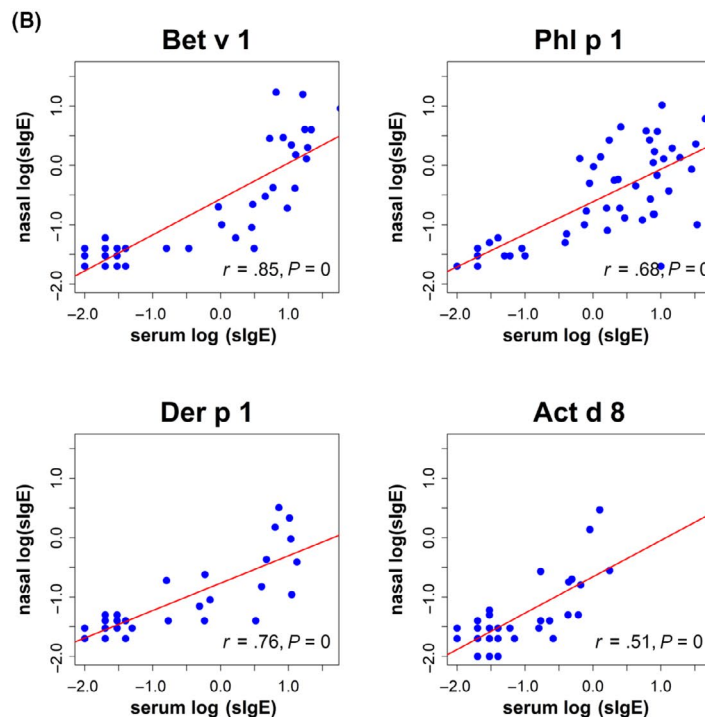
When correlating IgE against single allergen components, we observed a significant positive correlation ( $n = 49$ ;  $P < .001$ ) between serum and nasal tests (Figure 1, A), with a median of all Spearman correlation coefficients ( $r_s$ ) across the whole panel of 0.77 (IQR 0.75, 0.85). The highest correlation coefficient was observed for Der p 2 and Aln g 1 ( $r_s = .88$ ), followed by Cor a 1 ( $r_s = .87$ ) and Bet v 1 ( $r_s = .85$ ) (Figure 1, B).

We next determined the global sensitization profile of each subject's serum and nasal fluid and compared the profiles for all

**FIGURE 1** Correlation between nasal and serum sIgE levels. A, Spearman correlation coefficients for all tested allergen components. B, Nasal sIgE levels (y-axis) plotted against serum sIgE levels (x-axis). Dots indicate study subjects. Fitted lines indicate positive linear correlations (Spearman). C, Spearman correlation coefficients per subject over the entire aeroallergen sensitization profile, as shown in panel A. D, Serum sIgE profile (x-axis) versus nasal sIgE profile (y-axis) shown for selected subjects. Blue dots indicate the 17 allergen-specific IgE tests included in the overall analysis. The red line represents the linear regression curve fit (positive Spearman correlation)

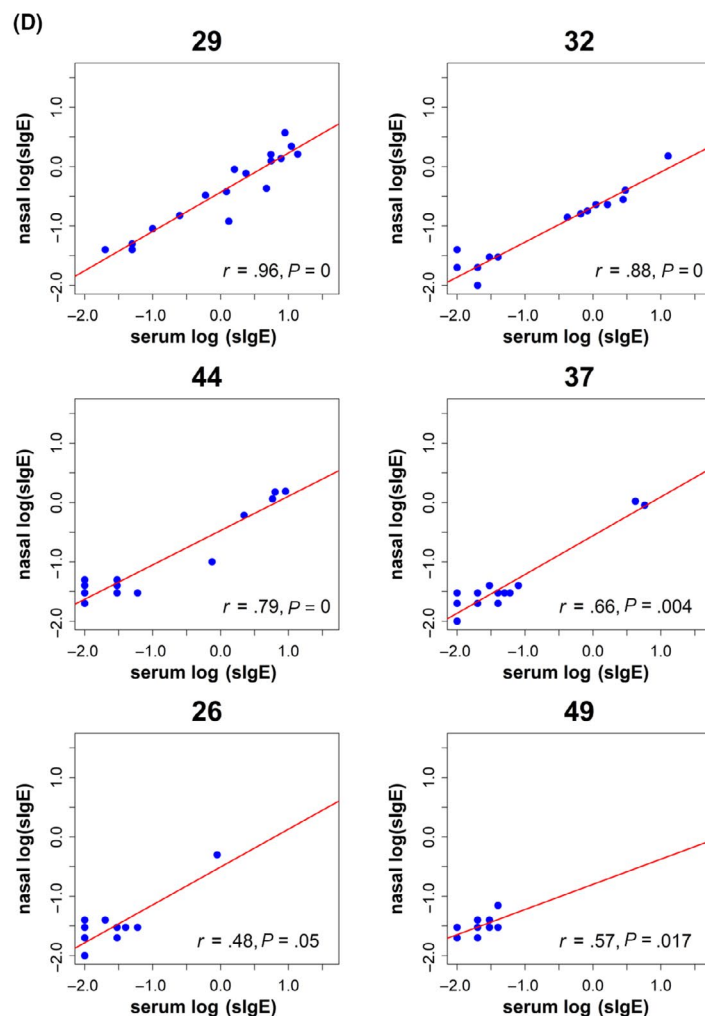
(A)

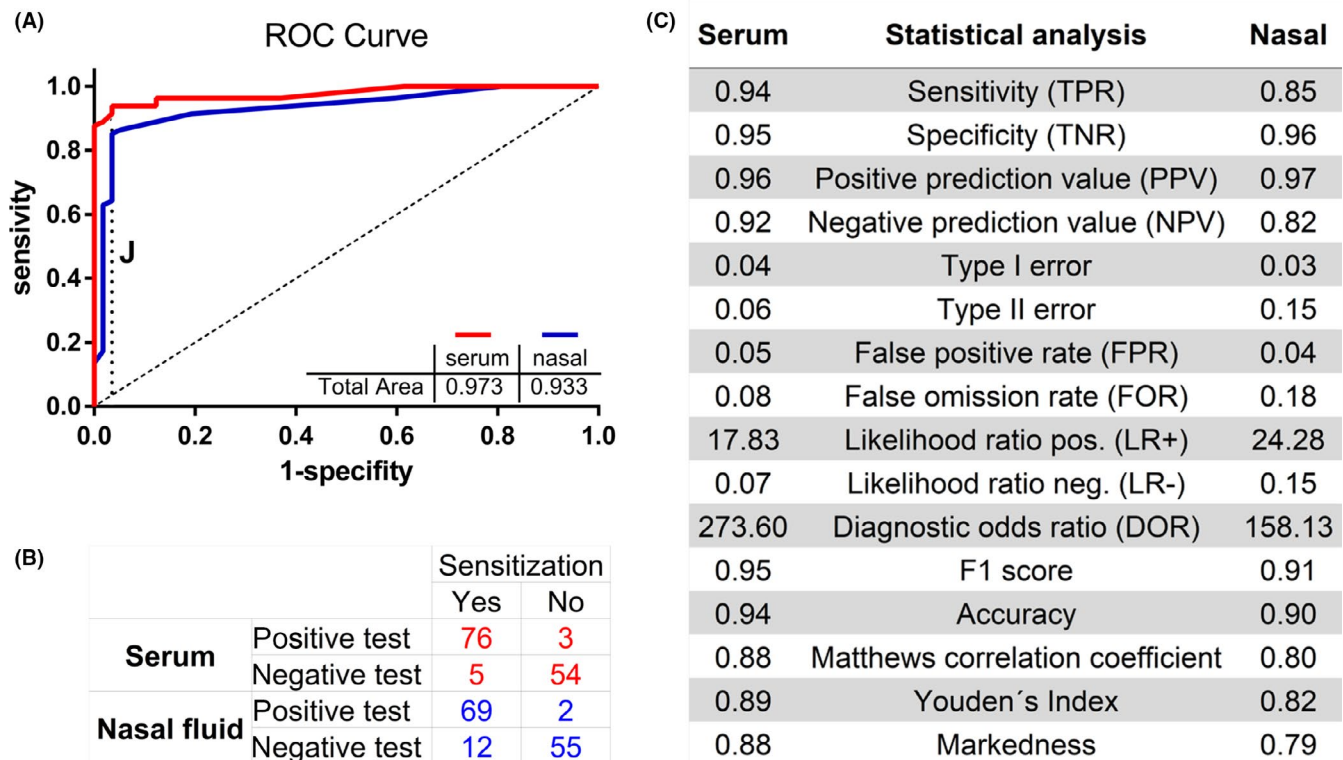
Allergen	R
Aln g 1	0.88
Der p 2	0.88
Cor a 1.0101	0.87
Bet v 1	0.85
Phl p 5	0.85
Mal d 1	0.82
Der f 1	0.79
Phl p 6	0.78
Pru p 1	0.77
Der f 2	0.77
Phl p 2	0.76
Der p 1	0.76
Cor a 1.0401	0.75
Ara h 8	0.74
Cyn d 1	0.72
Phl p 1	0.68
Act d 8	0.51



(C)

ID	R	ID	R
45	0.96	41	0.81
29	0.96	09	0.80
28	0.95	42	0.80
24	0.94	38	0.79
13	0.93	44	0.79
34	0.93	11	0.77
39	0.92	30	0.76
10	0.92	23	0.75
06	0.91	21	0.71
25	0.91	04	0.71
27	0.9	22	0.69
43	0.89	12	0.68
32	0.88	47	0.67
33	0.87	37	0.66
18	0.87	20	0.61
14	0.87	49	0.57
15	0.86	05	0.56
07	0.86	19	0.52
17	0.86	48	0.51
40	0.85	26	0.48
36	0.85	16	0.40
03	0.85	08	0.32
31	0.83	01	0.28
02	0.83	46	0.03
35	0.82		





**FIGURE 2** Receiver operating characteristic (ROC) curve for nasal and serum IgE test, and their comparison of ImmunoCAP and ISAC diagnostic. A, The ROC curves are generated by plotting nasal (blue) and serum (red) data. "J" indicates the threshold for positive nasal test. B, Contingency table for tests in serum and nasal fluid. C, Statistical analysis to verify performance of serum and nasal ISAC. Diagnostics via ImmunoCAP served as control

subjects (Figure 1, C). We observed a strong positive correlation between serum and nasal sIgE profiles, and the median Spearman correlation coefficient was  $r_s = .75$ , the IQR 0.68, 0.88. The only poor correlations observed were for subjects No 01, 08, 16, 26, and 46. The highest correlations were observed for subjects with several sensitizations, whereas nonsensitized subjects showed poorer correlations (see Figure 1, D for overview over selected subjects).

Finally, we evaluated the performance of the ISAC tests in serum and nasal fluid in comparison with the ImmunoCAP method by assessing cutoff, sensitivity, specificity, likelihood ratios, and operating characteristics. First, a nasal fluid cutoff threshold was estimated by a receiver operating characteristics (ROC) curve using Youden's index. The area under the curve (AUC) for nasal fluid (0.93) and serum tests (0.97) was found to be comparable (Figure 2, A). The nasal threshold was calculated to be 0.08 ISU-E. The diagnostic capability of sIgE determination for birch pollen (Bet v 1, Bet v 2, and Bet v 4), grass pollen (Cyn d 1, Phl p 1, Phl p 2, Phl p 5, and Phl p 6), and HDM (Der f 1, Der f 2, Der p 1, and Der p 2) was assessed by a two-by-two table (Figure 2, B). Specificity (serum: 0.95 and nasal: 0.96) and positive prediction value (serum: 0.96 and nasal: 0.97) were similar for both methods. The diagnostic sensitivity and negative prediction value of serum diagnostic were higher than nasal diagnostic (TPR serum: 0.94 vs TPR nasal: 0.85; NPV serum: 0.92 vs NPV nasal: 0.82). In addition, diagnostic accuracy was determined by calculating likelihood ratios for serum (LR+ 17.83, LR- 0.07) and nasal biosampling (LR+ 24.28,

LR- 0.15). Further statistical analyses were done to complement the results (Figure 2, C).

We demonstrate similar specificities of ISAC for serum and nasal fluid tests, whereas the sensitivity in the serum test is higher than in the nasal test. A likely explanation for the lower sensitivity in our nasal tests is that the manufacturer's instructions are optimized for the serum matrix. Consequently, the experimental setup (eg, incubation times, fluorescent marker, sampling methods) should be improved further to raise sensitivity of nasal fluid diagnostic. Moreover, the threshold for the nasal fluid test, as assessed in the current study, could be set to an even lower value (0.08) than recommended for serum by the manufacturer (0.3) without losing specificity. Overall, sIgE levels against all tested allergen components were significantly and positively correlated between nasal fluid and serum, and the inter-sample correlation was best for sIgE against birch and grass pollen and HDM (Figure S2. online supporting information). Recent studies comparing ISAC tests in serum and nasal fluid have shown similar results<sup>6-9</sup>; however, these studies compared only tests for single allergens, that is, house dust mite, Japanese cedar, mugwort pollen, and fungal spores, instead of a whole aeroallergen panel.

To conclude, we present the first study to assess whole patterns of IgE specific to aeroallergens in serum and nasal fluid and to systematically evaluate the novel, ISAC-based method in comparison with clinical standard diagnostics. Our results could be of high

relevance for the future improvement of clinical diagnostics, especially in children with allergic airway disease.

## KEYWORDS

allergy diagnosis, IgE, pollen, rhinitis

## CONFLICTS OF INTEREST

The authors declare no conflicting interests.

## FUNDING INFORMATION

Impuls- und Vernetzungsfonds (IVF), Helmholtz Gemeinschaft; EU-COST Action DiMoPEX (Grant Number CA15129).

Mehmet Gökkaya<sup>1,2</sup>

Vera Schwierzeck<sup>1,2</sup>

Karisa Thölken<sup>1,2</sup>

Stephan Knoch<sup>1,2</sup>

Michael Gerstlauer<sup>3</sup>

Gertrud Hammel<sup>1,2</sup>

Claudia Traidl-Hoffmann<sup>1,2,4</sup> 

Stefanie Gilles<sup>1,2</sup> 

<sup>1</sup>Chair and Institute of Environmental Medicine, UNIKA-T, Technical University of Munich, Augsburg, Germany

<sup>2</sup>Helmholtz Zentrum München - German Research Center for Environmental Health, Augsburg, Germany

<sup>3</sup>Pediatric Pneumology and Allergology Unit, Medical University of Augsburg, Augsburg, Germany

<sup>4</sup>CK-CARE, Christine Kühne Center for Allergy Research and Education, Davos, Switzerland

## Correspondence

Stefanie Gilles, Chair and Institute of Environmental Medicine, UNIKA-T, Technical University of Munich and Helmholtz Zentrum München, Neusäßer Str. 47, D-86156, Augsburg, Germany.  
Email: stefanie.gilles@tum.de

## ORCID

Claudia Traidl-Hoffmann  <https://orcid.org/0000-0001-5085-5179>

org/0000-0001-5085-5179

Stefanie Gilles  <https://orcid.org/0000-0002-5159-2558>

## REFERENCES

1. Zuberbier T, Lotvall J, Simoons S, Subramanian SV, Church MK. Economic burden of inadequate management of allergic diseases in the European Union: a GA(2) LEN review. *Allergy*. 2014;69(10):1275-1279.
2. Bousquet J, Schunemann HJ, Togias A, et al. Next-generation Allergic Rhinitis and Its Impact on Asthma (ARIA) guidelines for allergic rhinitis based on Grading of Recommendations Assessment, Development and Evaluation (GRADE) and real-world evidence. *J. Allergy Clin. Immunol.* 2020;145(1):70-80.e3.
3. Jensen-Jarolim E, Jensen AN, Canonica GW. Debates in allergy medicine: molecular allergy diagnosis with ISAC will replace screenings by skin prick test in the future. *World Allergy Org. J.* 2017;10:33.
4. Valenta R, Karaulov A, Niederberger V, et al. Allergen extracts for in vivo diagnosis and treatment of allergy: is there a future? *J Allergy Clin Immunol Pract.* 2018;6(6):1845-1855 e2.
5. Damialis A, Häring F, Gökkaya M, et al. Human exposure to airborne pollen and relationships with symptoms and immune responses: Indoors versus outdoors, circadian patterns and meteorological effects in alpine and urban environments. *Sci Total Environ.* 2019;653:190-199.
6. Campo P, Del Carmen P-S, Eguiluz-Gracia I, et al. Direct intranasal application of the solid phase of ImmunoCAP(R) increases nasal specific immunoglobulin E detection in local allergic rhinitis patients. *Int Forum Allergy Rhinol.* 2018;8(1):15-19.
7. Ahn JY, Hong SJ, Choi BS. Clinical evaluation of techniques for measuring nasal-specific immunoglobulin E in pediatric patients. *J Korean Med Sci.* 2017;32(12):2005.
8. Meng Y, Lou H, Wang Y, Wang C, Zhang L. The use of specific immunoglobulin E in nasal secretions for the diagnosis of allergic rhinitis. *The Laryngoscope.* 2018;128(9):E311-E315.
9. Sakaida H, Masuda S, Takeuchi K. Measurement of Japanese cedar pollen-specific IgE in nasal secretions. *Allergol Int.* 2014;63(3):467-473.

## SUPPORTING INFORMATION

Additional supporting information may be found online in the Supporting Information section.

DOI: 10.1111/all.14229

# Cadherin-related family member 3 upregulates the effector functions of eosinophils

To the Editor,

Acute respiratory infections including rhinovirus (RV) infections are a major cause of asthma exacerbations.<sup>1</sup> Recent studies suggest that eosinophils play important roles in the development of asthma exacerbation.<sup>2</sup> Not only neutrophils but also eosinophils increase in asthmatic airways during viral infection,<sup>3</sup> suggesting that eosinophils are

indeed recruited to and activated in the airways during virus-related asthma exacerbations.

Cadherin-related family member 3 (CDHR3), a member of the cadherin superfamily, is a transmembrane protein with six extracellular cadherin domains. However, the biological function of CDHR3 is still unknown. Recently, Bønnelykke et al<sup>4</sup> reported that