

## Discovering the hidden benefits of cognitive interviewing in two languages: the first phase of a validation study of the Integrated Palliative care Outcome Scale

Eva Schildmann, E. Iris Groeneveld, Johannes Denzel, Alice Brown, Florian Bernhardt, Katharine Bailey, Ping Guo, Christina Ramsenthaler, Natasha Lovell, Irene J. Higginson, Claudia Bausewein, Fliss EM. Murtagh

### Angaben zur Veröffentlichung / Publication details:

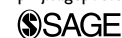
Schildmann, Eva, E. Iris Groeneveld, Johannes Denzel, Alice Brown, Florian Bernhardt, Katharine Bailey, Ping Guo, et al. 2015. "Discovering the hidden benefits of cognitive interviewing in two languages: the first phase of a validation study of the Integrated Palliative care Outcome Scale." *Palliative Medicine* 30 (6): 599–610.  
<https://doi.org/10.1177/0269216315608348>.

# Discovering the hidden benefits of cognitive interviewing in two languages: The first phase of a validation study of the Integrated Palliative care Outcome Scale

*Palliative Medicine*  
2016, Vol. 30(6) 599–610  
© The Author(s) 2015



Reprints and permissions:  
sagepub.co.uk/journalsPermissions.nav  
DOI: 10.1177/0269216315608348  
pmj.sagepub.com



Eva K Schildmann<sup>1</sup>, E Iris Groeneveld<sup>2</sup>, Johannes Denzel<sup>1</sup>,  
Alice Brown<sup>2</sup>, Florian Bernhardt<sup>1</sup>, Katharine Bailey<sup>2</sup>, Ping Guo<sup>2</sup>,  
Christina Ramsenthaler<sup>2</sup>, Natasha Lovell<sup>2</sup>, Irene J Higginson<sup>2</sup>,  
Claudia Bausewein<sup>1</sup> and Fliss EM Murtagh<sup>2</sup>

## Abstract

**Background:** The Integrated Palliative care Outcome Scale is a newly developed advancement of the Palliative care Outcome Scale. It assesses patient-reported symptoms and other concerns. Cognitive interviewing is recommended for questionnaire refinement but not adopted widely in palliative care research.

**Aim:** To explore German- and English-speaking patients' views on the Integrated Palliative care Outcome Scale with a focus on comprehensibility and acceptability, and subsequently refine the questionnaire.

**Methods:** Bi-national (United Kingdom/Germany) cognitive interview study using 'think aloud' and verbal probing techniques. Interviews were audio-recorded, transcribed verbatim and analysed using thematic analysis and pre-defined categories. Results from both countries were collated and discussed. The Integrated Palliative care Outcome Scale was then refined by consensus.

**Setting/participants:** Purposely sampled patients from four palliative care teams in palliative care units, general hospital wards and in the community.

**Results:** A total of 15 German and 10 UK interviews were conducted. Overall, comprehension and acceptability of the Integrated Palliative care Outcome Scale were good. Identified difficulties comprised the following: (1) comprehension problems with specific terms (e.g. 'mouth problems') and length of answer options; (2) judgement difficulties, for example, due to the 3-day recall for questions; and (3) layout problems. Combining the results from both countries (e.g. regarding 'felt good about yourself') and discussing them from both languages' perspectives resulted in wider consideration of the items' meaning, enabling more detailed refinement.

**Conclusion:** Cognitive interviewing proved valuable to increase face and content validity of the questionnaire. The concurrent approach in two languages – to our knowledge the first such approach in palliative care – benefited the refinement. Psychometric validation of the refined Integrated Palliative care Outcome Scale is now underway.

## Keywords

Patient-reported outcome measures, outcome measurement, cognitive interviewing, palliative care

### What is already known about the topic?

- Outcome measures need to be specifically developed in palliative care populations to reflect the concerns of advanced illness and ensure minimal respondent burden.
- The Palliative care Outcome Scale (POS) and Palliative care Outcome Scale–symptom module (POS-S) are brief, valid and reliable questionnaires developed for this population.
- However, there is some overlap, and patient and clinician feedback indicates scope for further refinement.
- Cognitive interviewing is recommended for questionnaire development but not adopted widely in palliative care research.

<sup>1</sup>Department of Palliative Medicine, Munich University Hospital, Munich, Germany

<sup>2</sup>Department of Palliative Care, Policy & Rehabilitation, Cicely Saunders Institute, King's College London, London, UK

### Corresponding author:

Eva K Schildmann, Department of Palliative Medicine, Munich University Hospital, Marchioninstr. 15, 81377 Munich, Germany.  
Email: Eva.schildmann@med.uni-muenchen.de

**What this paper adds:**

- In response to patients' and clinicians' demands, we present a refined measure (Integrated Palliative care Outcome Scale (IPOS)) that has been shaped by the patients' perspectives.
- This study demonstrates once more the importance of cognitive interviewing in the refinement of outcome measures and that it can be done effectively in a palliative care population.
- The concurrent use of cognitive interviewing in two languages – for the first time in palliative care – provided additional valuable information, resulted in wider consideration of the meaning and context of each item and led to a better overall refinement of the IPOS questionnaire.

**Implications for practice, theory or policy**

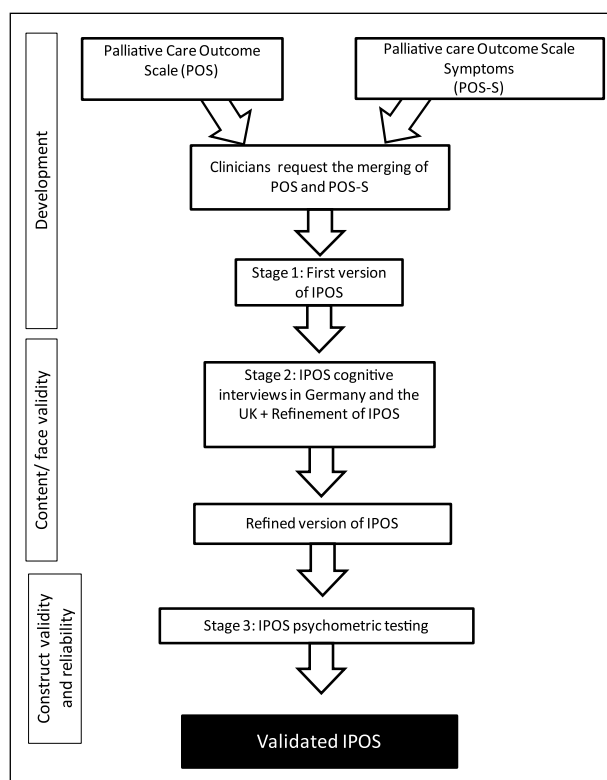
- IPOS is now available for clinical use; it is one of the few brief measures validated in this population that covers all relevant domains.
- The refined version of the IPOS is currently undergoing phase II of validation in Germany and the United Kingdom to demonstrate the psychometric properties.
- Wider awareness and use of cognitive interviewing in measure refinement in palliative care is crucial, and cognitive interviewing in more than one language can have added value.

**Background**

Patient-reported outcome measures (PROMs) are questionnaires completed by patients to measure their perceptions of their functional status and well-being.<sup>1</sup> The Integrated Palliative care Outcome Scale (IPOS) is a PROM and a newly developed advancement of the Palliative care Outcome Scale (POS) which assesses symptoms and other palliative care (PC) concerns as perceived by the patient. There are versions for patients and healthcare professionals.

The POS was developed in 1999 with the involvement of patients and has been validated in a variety of settings: hospice in-patient care, day care, home care, hospital in-patient care and community and outpatient services.<sup>2</sup> It has been used to inform clinical practice, to monitor service interventions, to evaluate and improve the quality of care and as a research tool.<sup>3,4</sup> The POS team has currently endorsed 11 translations, and POS is being used in over 20 countries.<sup>4,5</sup> To describe the impact of PC-specific symptoms, a symptom module (the POS-S) was developed as an addition to the POS. Requests from clinical colleagues to merge POS and POS-S triggered the development of IPOS (see Figure 1). The IPOS is based on POS and POS-S, with changes to the wording of certain questions and response options. The 10 questions cover patients' main concerns, common symptoms, patient and family distress, existential well-being, sharing feelings with family, information received and practical concerns.

Adopting a recommended quality criterion for questionnaires,<sup>6,7</sup> we aimed to involve patients in the questionnaire development through cognitive interviewing to ensure face and content validity and acceptability. Cognitive interviewing is increasingly used as a step in the refinement of survey questions and PROMs.<sup>8</sup> A complex cognitive process takes place when research participants answer questionnaires. This includes comprehension of



**Figure 1.** Design stages of the IPOS.

the question, retrieval of information from memory, judgement processes to estimate an answer and formulation of a response.<sup>9,10</sup> The European Organisation for Research and Treatment of Cancer (EORTC) guidelines for questionnaire development recommend cross-language pre-testing.<sup>11</sup> Accordingly, we aimed to base the IPOS refinement on views from German- and English-speaking patients and have the refined questionnaires available for concurrent psychometric validation in both countries.

## Methods

### Design

Cross-sectional, qualitative, bi-national and multicentre study enrolling purposively sampled PC patients in Germany and the United Kingdom, using cognitive interviews.

### Setting and participants

In Germany, patients were recruited from a university hospital PC unit and its associated hospital support and community PC teams. UK patients were recruited from a university hospital support team. Inclusion criteria were as follows: age 18 years or above, capacity to give consent and sufficient fluency in written and spoken English or German language to answer the questionnaire. Exclusion criteria were as follows: being too unwell or distressed to participate as judged by the clinical team. Participants were purposively sampled according to the following criteria in order to achieve variation across key characteristics: gender, over and under 65 years, high, medium and low functional status as measured by the Australia-modified Karnofsky Performance Status (AKPS) scale<sup>12</sup> (see Table 1) and malignant/non-malignant main diagnosis. It was not aimed to have equal numbers in all cells, but to include participants with all characteristics. Screening took place at multidisciplinary team meetings or handovers, and a clinical team member asked whether the patients were interested and provided an information leaflet. Interested patients were approached by the researcher – except five who had deteriorated or been discharged. Of the 29 approached patients, 25 gave their informed consent.

### Cognitive interviews

Formal translation of the IPOS from English to German had previously been conducted using standard techniques.<sup>13</sup> The interviews were conducted in the participants' current care setting, that is, on the ward or in the participants' home. Participants were asked to complete the questionnaire, using a combination of 'think aloud' and concurrent verbal probing techniques to elicit problems or comments regarding the completion.<sup>14,15</sup> 'Think aloud' techniques (uttering the thoughts during question answering) were demonstrated by the interviewer at the start of the interview. Probing techniques were both spontaneous, to explore verbal or non-verbal utterances like hesitations or irritation, and standardised according to an interview guide (see Appendix 1). This was based on the four-stage question response model as described by Tourangeau<sup>10</sup> (comprehension, retrieval, judgement and response formulation). Probes were developed for each of the four stages, and additional questions related to layout, missing aspects in the questionnaire and burden associated with its completion. The interviews were audio-recorded and transcribed verbatim.

### Analysis of the interviews and refinement of the IPOS

Interviews were analysed by two independent researchers in each country using thematic analysis as described by Willis.<sup>14</sup> In accordance with the interview guide, the transcript was also categorised following Tourangeau's<sup>10</sup> question response model (comprehension, retrieval, judgement and response formulation). Additional categories included the following: layout, acceptability/questionnaire burden and additional aspects. Results of all participants were compared and aggregated for each question and each category in both countries to identify the reasons for difficulties in answering the questionnaire and other emergent themes.

The German results were translated. Results from both countries were then collated and discussed between the research teams and the IPOS was refined accordingly, based on consensus. The German version was adapted according to the refined English version, taking German-language-specific results into account.

The study was approved by the relevant ethics committees (Ethikkommission of Ludwig-Maximilians-Universität Munich, reference number 169-13; National Research Ethics Service (London–Dulwich Committee) reference number: 13/LO/0573).

## Results

### Demographics

A total of 15 German and 10 UK interviews (16–54 min long) were completed between July 2013 and July 2014. The median age was 65 years in Germany (range 22–85 years) and 61 years in the United Kingdom (range 43–83 years). In Germany, 10/15 and in the United Kingdom, 7/10 participants were female. The predominant primary diagnosis was cancer. A third of the participants in Germany and two-thirds in the United Kingdom had an AKPS score of 50% or lower, which is defined by requiring 'considerable assistance and frequent medical care'.<sup>12</sup> The majority of participants were in-patients. Details are shown in Table 1.

### Findings from the interviews and IPOS refinement

The interviews in both countries demonstrated that for the majority of participants, most questions and answer options worked well. The identified difficulties were mainly comprehension problems and some pertained to judgement. No problems were identified with retrieval or response formulation. The interview results and the changes made based on them are shown in Table 2. The revised questionnaire can be found on the POS website.<sup>5</sup>

**Table 1.** Demographic and clinical details of participants.

		Germany	United Kingdom
Total number interviewed		15	10
Age (years)	Median, range	65 (22–85)	61 (43–83)
	≤65	9	7
	>65	6	3
Sex	Female	10	7
	Male	5	3
Nationality	German	14	
	British		7
	Other	1	1
	Not recorded		2
	British		7
Ethnicity	Other	1	1
	Not recorded		2
	White British	Not recorded	7
	Black African		2
Marital status	Black Caribbean		1
	Married	7	6
	Partner	1	1
	Separated or divorced	2	2
	Widowed		0
Living situation	Single	5	0
	Not specified		1
	Alone	4	4
Working situation	With others	11	6
	Retired	Not recorded	4
Primary diagnosis	Working		5
	Unemployed		1
	Malignant	13	9
AKPS score	Non-malignant	2 (cardiomyopathy and motor neuron disease)	1 (chronic obstructive pulmonary disease)
	Median, range	60% (40%–100%)	52% (40%–70%)
	>70%	4	0
	>50%≤70%	6	3
Care setting	≤50%	5	7
	Palliative care unit	10	
	Other hospital ward with support from hospital palliative care team	2	10
	Community	3	

The Australia-modified Karnofsky Performance Status Scale (AKPS) grades functional status, for example, 70% represents 'cares for self, unable to carry on normal activity or to do active work' and 50% represents 'requires considerable assistance and frequent medical care'.<sup>12</sup>

**Comprehension.** Patients were certain about their main problems and concerns (question 1), and many described these as the things that are always on your mind. Positive comments about the symptom list in question 2 included the following:

Oh, easy to understand. (United Kingdom, female aged 43 years)

and

I think question 2 is good, that it is all dealt with in a very 'compact' way. (Germany, female aged 25 years)

'Pain', 'shortness of breath', 'nausea', 'poor appetite' and 'constipation' listed in question 2 were well understood by all participants. Comprehension of question 3 (anxiety/worries) was also good for all participants.

Some comprehension problems were identified in both countries. First, difficulties arose with the wording of specific questions. For example, the term 'mouth problems' in question 2 was regarded as too vague, and in contrast to the intent of the question, many patients did not think of dry mouth when answering it. Furthermore, comprehension problems concerned answer options which were regarded

**Table 2.** Issues regarding IPOS completion identified in the cognitive interviews in Germany and the United Kingdom and resultant changes made to the IPOS.

Prototype IPOS items	Prototype IPOS answer options	Aspects identified with supporting quotations	Revised IPOS items	Revised IPOS answer options
Q1. What have been your main problems or concerns at the moment?	Open question with three lines for answers	Good comprehension (18/25) of this question. Participants responded with personal problems as well as health-related problems 2/15 German participants explicitly welcomed that the question asks for main problems AND concerns <i>Oh yes, that is good. Main problems is of course also associated with concerns. (Germany, male aged 55 years)</i> 3/10 of UK and 4/15 of German patients queried the openness of the question or were at first unsure about the layout with three free lines but consequently answered it <i>Con ... concerning what. (UK, female aged 65 years)</i> 3 days was not considered long enough by some patients (5/25) <i>Why has it got to be the last three days? You know, like, in the last week, I've been really sick for five days, the last two days I've been alright. (UK, male aged 53 years)</i> Judging severity of symptom over the time period of 3 days was sometimes difficult when people have had the symptom for one of the days or had a fluctuation of symptom severity (6/25) The subheadings in the answer options were confusing and/or too long (5/25) <i>Poor appetite, well I mean 'marked effect on activities or concentration', how does it affect? But activities you just don't wanna eat that's all. So I can't find the right one to tick. (UK, female aged 83 years)</i> In contrast 2/25 of patients found that the explanations helped 10/15 of German participants explicitly said the difference between response options was clear <i>... that can be differentiated clearly. (Germany, male aged 22 years)</i> 8/25 of participants answered how severely they had the symptom rather than how it affected them <i>Good comprehension by all participants</i> <i>Oh, easy to understand. (UK, female aged 43 years)</i> Good comprehension by all participants <i>Difficulty in um not breathing as you normally do. (UK, female aged 47 years)</i> 10/15 of German participants said it was good that the question asks about weakness as well as lack of energy as they are different <i>... they are very similar ... but they are not the same. (Germany, female aged 49 years)</i> 2/25 of patients interpreted weakness or lack of energy as similar to drowsiness Answer option wording 'unable to think of anything else' inappropriate, for example, for weakness (Germany, 1/15) Good comprehension by all participants <i>Well nausea is you feel yuck, there's something there and you're likely to be sick ... and vomiting is there is no doubt about it. (UK, female aged 83 years)</i> 4/15 of German participants described different types of nausea, and therefore found the explanation in brackets provided clarification <i>I sometimes feel sick but do not have the feeling that I have to vomit. (Germany, female aged 77 years)</i> Overall good comprehension by participants (24/25) <i>Vomiting is when you are actually sick. (UK, female aged 47 years)</i> Good comprehension by all participants <i>That I sometimes do not feel like eating anything. (Germany, male aged 55 years)</i> Answer option 'Affects activity and concentration' not appropriate for, for example, poor appetite (Germany, 1/15) Good comprehension by all participants <i>(regarding 'poor appetite') ... is clear, clearly definable. Constipation, too. By different drugs, or caused by the chemotherapy. (Germany, female aged 66 years)</i> 2/10 of UK patients thought other bowel problems should be included here too	Q1. What have been your main problems or concerns <b>over the past 3 days?</b>	Open question with three lines for answers
Q2. Below is a list of symptoms which you may or may not have experienced. For each symptom, please tick one box that best describes how it has affected you over the past 3 days	<p><b>Not at all</b> I have not had this symptom in the last 3 days</p> <p><b>Slightly</b> Little or no effect on activities or concentration</p> <p><b>Moderately</b> Some effect on activities or concentration</p> <p><b>Severely</b> Marked effect on activities or concentration</p> <p><b>Overwhelmingly</b> Unable to think of anything else</p>		Q2. Below is a list of symptoms, which you may or may not have experienced. For each symptom, please tick one box that best describes how it has affected you over the past 3 days	<p><b>Not at all</b></p> <p><b>Slightly</b></p> <p><b>Moderately</b></p> <p><b>Severely</b></p> <p><b>Overwhelmingly</b></p>
Pain			Pain	
Shortness of breath			Shortness of breath	
Weakness or lack of energy			Weakness or lack of energy	
Nausea (feeling like you're going to be sick)			Nausea (feeling like you are going to be sick)	
Vomiting (being sick)			Vomiting (being sick)	
Poor appetite			Poor appetite	
Constipation			Constipation	

(Continued)

Table 2. (Continued)

Prototype IPOS items	Prototype IPOS answer options	Aspects identified with supporting quotations	Revised IPOS items	Revised IPOS answer options
Mouth problems		Too vague and unclear (5/25) <i>Mouth problems? It's funny they mention mouth problems, why would they ask about mouth problems?</i> (UK, female aged 83 years) 8/15 of patients in Germany did not necessarily think of dry mouth but of sore mouth/chewing/swallowing problems/tooth ache <i>The tongue is sore, there will be thrush or so, and with the teeth- they are not all own teeth – and so on there are problems with eating.</i> (Germany, male aged 69 years) 9/10 of UK patients had good comprehension of the word drowsiness. <i>Um ... when just ... when you're eyes are like going foggy and you just want to sleep ... Oh it was easy to understand.</i> (UK, female aged 43 years) 2/15 of German patients were uncertain if meant tiredness by day or by night <i>Problems going to sleep or problems sleeping through the night – or the drowsiness only relates to the daytime.</i> (Germany, female aged 77 years) 15/15 of German participants had good comprehension <i>Well, if I can just stand up and walk away – or somehow really walk, without aids, let's say. Now I cannot walk alone without the walking frame or the wheelchair. That is mobility for me.</i> (Germany, male aged 69 years) Interpretation of mobility and weakness/lack of energy as similar to UK patients (3/10) 2/15 of German participants commented that it was helpful having this question included and 4/10 UK patients wrote other symptoms <i>Yes, I find that good, because there may be things that are not listed.</i> (Germany, female aged 65 years)	<b>Sore or dry mouth</b>	
Drowsiness			Drowsiness	
Poor mobility			Poor mobility	
Please list any other symptoms not mentioned above, and tick one box to show how they have affected you over the past 3 days.			Please list any other symptoms not mentioned above, and tick one box to show how they have affected you over the past 3 days	
Q3. Over the past 3 days, have you been feeling anxious or worried about your illness or treatment?	No, not at all Occasionally Sometimes Most of the time Yes, always	Good comprehension by all participants	<b>Over the past 3 days</b> Q3. Have you been feeling anxious or worried about your illness or treatment?	<b>Not at all</b> Occasionally Sometimes Most of the time Always
Q4. Over the past 3 days, have you or friends been anxious or worried about you?		Variation in level of insight into family and friends worries and/or anxieties (3/25) <i>That's something I can't really quantify because when I talk of family ... you're talking of a group of people ... And different coping mechanisms how ... I can't quantify that.</i> (UK, female aged 47 years) 15/15 of German participants felt family/friends was clear; however, 2/10 UK patients were uncertain about who should be included in 'family or friends'	Q4. Have any of your family or friends been anxious or worried about you?	
Q5. Over the past 3 days, have you been feeling depressed?		8/10 of UK participants had a very good understanding of the word depressed <i>To be depressed ... um ... to be in darkness and see no light at all ... And your whole being is black.</i> (UK, female aged 70 years) 4/15 of German participants had comprehension problems with the word 'niedergeschlagen' and made suggestions for alternatives	Q5. Have you been feeling depressed? in German version alternative term for 'niedergeschlagen': <b>'traurig bedrückt'</b>	

**Table 2. (Continued)**

Prototype IPOS items	Prototype IPOS answer options	Aspects identified with supporting quotations	Revised IPOS items	Revised IPOS answer options
Q6. Over the past 3 days, have you felt good about yourself as a person?	Yes, all the time. Most of the time Sometimes Occasionally No, not at all	Germany participants interpreted the term used in German mostly as feeling 'physically well' or 'well in surroundings', and if asked did not associate it with a spiritual aspect (9/15) <i>For me feeling good would be standing up, walking ... and playing tennis and normal living. ... Relatively, I feel good, I do not have pain at the moment, but generally the situation is crap. (Germany, male aged 75 years)</i> 3/10 of UK participants found the question strange to be asked and confusing <i>How can you feel good about yourself when you're lying in hospital ... everything's crap. (UK, 1007)</i> <i>Oh I understood the question but I just didn't know what to put down ... (UK, female aged 43 years)</i>	<b>Q6. Have you felt at peace?</b>	<b>Always</b> <b>Most of the time</b> <b>Sometimes</b> <b>Occasionally</b> <b>Not at all</b>
Q7. Over the past 3 days, have you been able to share how you are feeling with your family or friends?	Yes, as much as I wanted Most of the time Sometimes Occasionally Not at all with anyone	Good comprehension by 23/25 participants <i>Yes ... I've been able to share how I feel ... Most of the time. (UK, female aged 65 years)</i> Answer options caused confusion to 2/10 UK participants	Q7. Have you been able to share how you are feeling with your family or friends as much as you wanted?	
Q8. Over the past 3 days, how much information have you and your friends been given?	Full information/as much as I wanted Information given, most questions addressed Information given at request, would have liked more Very little information given, most questions not addressed None at all, wanted more information	Questions and answer options considered by 6/25 patients to be too long or complicated Informed 'by whom' and 'about what?' is missing (4/25) Question missed whether information was wanted or not (UK, 1/10) and whether information was understood at the right 'level' (UK, 1/10) 1/10 of UK participants found it difficult to answer for both themselves and their family and friends <i>Well I don't know if it was enough for my family I can't answer for them. (UK, male aged 54 years)</i>	<b>Q8. Have you had as much information as you wanted?</b>	
Q9. Over the past 3 days, have any practical matters resulting from your illness, either financial or personal been addressed?	No problems/problems being addressed Occasional problems/problems being addressed Some problems/problems partly addressed Severe problems/problems not addressed Overwhelming problems/problems not addressed at all	Question and answer options confusing/difficult to comprehend (7/25) <i>They're very similar answers aren't they ... or is it my brain not working. (UK, female aged 43 years)</i> <i>'Practical matters' not ideal (Germany, 6/15)</i> <i>'Problem' in answer options inappropriate ('funeral' or 'legacy' is not a problem) (Germany, 2/15)</i>	<b>Q9. Have any practical problems resulting from your illness been addressed (such as financial or personal)?</b>	<b>Problems addressed/no problems</b> <b>Problems mostly addressed</b> <b>Problems partly addressed</b> <b>Problems hardly addressed</b> <b>Problems not addressed</b>
Q10. How did you complete this questionnaire?	On my own With help from a friend or relative With help from a member of staff		Q10. How did you complete this questionnaire?	On my own With help from a friend or relative With help from a member of staff

**IPOS: Integrated Palliative care Outcome Scale.**  
The figures refer to the number of participants who made these comments out of the total number of participants. The remaining participants did not make specific comments and had no difficulties with completion. Changes to the IPOS questions or answer options are typed in bold.

as too long or complicated in question 2 (symptom list), question 8 (information received) and question 9 (practical matters). In addition, a third of patients in each country rated the severity of the symptom instead of the degree of being affected by it in question 2 (symptom list).

For some questions, interviewing in the two countries elucidated additional aspects that were important for the refinement of the IPOS: The question 'Have you felt good about yourself as a person?' (Q6) had been difficult to translate into German as there is no equivalent phrase that captures the same concept. The translation used for the interviews was understood by most participants as feeling physically well or feeling well in their surroundings. This complemented the comments of UK patients that this question was strange to be asked. A UK patient noted that question 8 (information needs) missed whether the received information was wanted. There were cases when comments made by the German patients diverged with those from the UK patients: Some UK patients interpreted 'weakness and lack of energy' and 'mobility' as similar, whereas all German patients had a clear understanding of 'mobility'. Some German patients were unsure about the meaning of 'drowsiness', while UK patients had a good understanding of the word. In addition, there were a few translation-related difficulties commented on by the German participants, for example, comprehension problems of the German word used for 'depressed'.

**Judgement.** A judgement problem was identified in both countries due to the 3-day time period over which symptoms are sought: some participants said they were unsure how to answer a question when they had a fluctuation of symptom severity; however, all answered the questions. Five participants commented that they would prefer a longer time frame, for example, 7 days. In addition, three participants said that judging the level of insight and anxiety of family and friends was difficult, but all answered the question.

**Acceptability/questionnaire burden, missing aspects and layout.** Overall, acceptability of the measure was good. Spontaneous comments included

Well I think it's a good questionnaire I really do ... it lets everybody like staff that they've only got to look at it and they know how you feel. (United Kingdom, female aged 74 years)

One patient became distressed when she talked about the worries of her family, but explicitly wanted to continue answering the questions because she thought they were important. One other patient found answering the questionnaire burdensome because she had problems concentrating. All other patients did not find it distressing or burdensome to answer the questions. In the United Kingdom, 8 of the 10 patients stated that they wanted to keep all questions in IPOS, one patient expanded on the importance and variety of all questions:

... when someone's not well as I say it changes your whole system your whole ... routine ... and everything needed to be looked into properly. (United Kingdom, female aged 70 years)

One or two patients each suggested the following aspects to be additionally included in the questionnaire: ease of contacting the relevant team, experience of care, general well-being, insomnia and diarrhoea. We did not incorporate these in the refined IPOS for the following reasons: We recognise the importance of measuring patient experience of care, but intended this questionnaire to remain a PROM. The aim was to assess specific symptoms and concerns. Defining insomnia is difficult, often different types of it are described.<sup>16</sup> Besides, an open list is provided for patients for not-listed symptoms, for example, insomnia and diarrhoea. The group agreed that this was sufficient, as we wanted to minimise respondent burden.

Finally, layout problems were identified, especially the difficulty of staying in the right line for questions 1, 2, 7 and 8. The layout changed automatically due to the item refinements, especially shortening/aligning of answer options.

**Added value of cognitive interviewing in two languages for IPOS refinement.** The difficult translation of 'felt good about yourself as a person' (question 6) into German and the fact that the chosen translation was mainly understood by patients as physical well-being led to detailed discussions between both research teams about the question's meaning and intention. As the intended emphasis was on spiritual well-being, the question was replaced by the respective question from the African POS 'Have you felt at peace?' This question is a good measure of spiritual well-being in African PC and is highly relevant across diverse cultures and beliefs.<sup>17</sup> Discussion in the team also helped to find concise and clear phrasing in both languages for 'mouth problems' (question 2) as well as for questions 8 (information received) and 9 (practical matters). The items 'weakness or lack of energy', 'drowsiness' and 'poor mobility' were left unchanged after extensive discussion. For this discussion, the partly conflicting results from the interviews in both languages and considerations for alternatives in both languages – which were deemed inferior to the current items – were paramount.

## Discussion

The cognitive interviews conducted simultaneously in Germany and the United Kingdom showed that for the majority of patients, most questions and answer options of the IPOS worked well. The difficulties that were identified were mainly comprehension problems, which were addressed in questionnaire refinement. A judgement problem was reflected in some patients' replies regarding the 3-day time period over which symptoms were sought. These patients found it hard to judge the score if

symptoms were fluctuating. This corresponds with the findings of Bergh et al.<sup>18</sup> in their cognitive interview study of the Edmonton Symptom Assessment System (ESAS), where patients found judging intensity ‘now’ difficult for fluctuating symptoms. The scoring of fluctuating symptoms seems to be a challenge for patients regardless of whether they are asked to score them ‘now’ or over a period of time. In accordance with the wish of some patients for a longer time frame than 3 days, a 7-day IPOS version is now also available. Generally, this problem of scoring fluctuating symptoms on a questionnaire illustrates that any questionnaire can only be one component of a comprehensive clinical assessment.<sup>19</sup>

Problems with retrieval or response formulation were not identified in this study. The absence of retrieval problems corresponds with the findings of a former cognitive interviewing study in PC and may be due to the short time period for which symptoms were sought.<sup>20</sup> However, the absence of retrieval problems is important to note for this population, which was mostly elderly and with low functional status. Another important finding was that except the two patients mentioned earlier, these PC patients with mostly poor functional status did not find it distressing or burdensome to complete the questionnaire, and that they wanted to retain all questions.

Overall, cognitive interviewing showed good comprehension and acceptability of the questionnaire, identified difficulties in its completion and helped to refine it. Enabling patients to shape IPOS greatly benefited the refinement. Cognitive interviewing of patients therefore proved a valuable method to reduce measurement error caused by misinterpretation of some questions and thereby to increase the questionnaire’s validity. Based on our findings, we want to emphasise the previously published view that cognitive interviewing is a valuable tool in questionnaire refinement and that it can be used effectively in the PC setting.<sup>20,21</sup>

To our knowledge, this is the first study in PC showing that simultaneous interviews in two languages can provide additional benefits for questionnaire refinement. Multinational perspectives have generally not been well represented in cross-national survey instruments so far.<sup>22</sup> This is also true for PC outcome measures despite their cross-national and international use. Studies that have used cognitive interview techniques in the development of PC outcome measurement instruments have done so in a single language.<sup>18–21</sup> In other areas of medicine, results of cognitive interviews in several languages have been published.<sup>23,24</sup> These studies, however, do not comment on the additional value of interviews in several languages to refine the tested outcome measures.

We want to emphasise that we still recommend cognitive interviewing in one language first for the development of a questionnaire from scratch. In this study, we wanted to refine an already existing questionnaire, the POS. The consistent results from the two countries and languages strengthened the credibility of the findings<sup>22</sup> and therefore

the evidence to inform the changes to the questionnaire. As Lee<sup>22</sup> recommends, in multi-site interviews, the aim should also be to identify as many different problems as possible across different sites. As demonstrated, results that were only found in one of the countries, for example, regarding ‘felt good about yourself as a person’, and conflicting results between the countries (e.g. regarding ‘mobility’ and ‘drowsiness’) added important aspects to the common findings. Collating the findings from interviews in the two languages and discussing them from two linguistic angles resulted in wider and deeper consideration of meaning and context of each item. This helped to shape the final version of the questionnaire, based on the patients’ perspectives in both countries, to the optimum.

*Methodological issues, strengths and limitations.* In this study, we combined ‘think aloud’ and probing techniques as advocated by cognitive interview experts.<sup>14</sup> Thus, we tried to maximise the information gained – such as unanticipated information by the ‘think aloud’ technique and specific information, for example, regarding the wording of certain questions, by probing techniques – and to minimise interviewer-imposed bias.<sup>14</sup> As recommended for interviewing in multiple countries or languages, we used standardised probing as well as spontaneous probing, thus combining their respective advantages.<sup>22</sup> Standardised questions maintain a level of objectivity and consistency of interviews across countries, while spontaneous probing allows flexibility to adjust the interview to the specific situations and different communication styles and facilitates more in-depth investigation into various aspects.<sup>22</sup> We used concurrent probing as retrospective probing was likely to be hindered by recall problems in this elderly population.<sup>20</sup>

It is debated whether ‘formal’ or ‘informal analysis’ of cognitive interviews is preferable.<sup>14</sup> In this study, we used thematic analysis as described by Willis<sup>14</sup> and additional coding applying the four categories from Tourangeau’s<sup>10</sup> question response model, that is, a formal approach. However, as argued elsewhere, questions and answer options that worked well and the main difficulties emerged without formal analysis.<sup>14,20</sup> Analysis was performed by two independent researchers in each country to enhance the findings’ credibility.

A limitation of this study is its relatively small sample size. It is still debated what constitutes a ‘sufficient’ sample size for cognitive interviews.<sup>15,22</sup> However, small numbers are common as this method is work-intensive and yields rich data.<sup>14,20</sup> With our study, we met current recommendations of 5–15 respondents per language group.<sup>22</sup> The majority of respondents had cancer which questions the transferability of the findings to people with other life-limiting diseases. However, this reflects the still high proportion of patients with cancer cared for by specialist PC in both countries. As only three community patients were included in the study, the results mainly reflect the views of

PC in-patients. However, these patients have complex PC needs – as this is by definition the reason for a referral to a PC hospital support team or PC unit. Therefore, it seems adequate to base the development of a tool that aims to assess PC concerns mainly on the views of these patients.

## Conclusion

Cognitive interviewing of patients for whom the questionnaire is intended proved a valuable tool to increase its face and content validity. The concurrent approach in two languages – to our knowledge the first such approach in PC – was beneficial. The refined version is currently undergoing psychometric validation in Germany and the United Kingdom. Wider awareness and use of cognitive interviewing in measure refinement in PC is crucial.

## Acknowledgements

The authors would like to thank the patients for their engaged participation and the staff at the participating centres for their help with recruitment.

## Funding

This article presents independent research funded by the National Institute for Health Research (NIHR) under the Programme Grants for Applied Research scheme (RP-PG-1210-12015) (for the interviews in the United Kingdom). The views and opinions expressed are those of the authors and do not necessarily reflect those of the NHS, the NIHR, MRC, CCF, NETSCC, the NIHR Programme Grants for Applied Research programme or the Department of Health. In Germany, this research received no specific grant from any funding agency in the public, commercial or not-for-profit sectors.

## References

1. Dawson J, Doll H, Fitzpatrick R, et al. The routine use of patient reported outcome measures in healthcare settings. *BMJ* 2010; 340: c186.
2. Hearn J and Higginson IJ. Development and validation of a core outcome measure for palliative care: the palliative care outcome scale. Palliative Care Core Audit Project Advisory Group. *Qual Health Care* 1999; 8: 219–227.
3. Aspinall F, Hughes R, Higginson I, et al. *A user's guide to the Palliative care Outcome Scale*. London: Palliative Care and Policy Publications, 2002.
4. Bausewein C, Le Grice C, Simon S, et al. The use of two common palliative outcome measures in clinical care and research: a systematic review of POS and STAS. *Palliat Med* 2011; 25: 304–313.
5. POS Development Team. Palliative Care Outcome Scale (POS), <http://www.pos-pal.org> (2015, accessed 6 March 2015).
6. Terwee CB, Bot SD, de Boer MR, et al. Quality criteria were proposed for measurement properties of health status questionnaires. *J Clin Epidemiol* 2007; 60: 34–42.
7. Higginson IJ. Quality criteria valuable with slight modification. *J Clin Epidemiol* 2007; 60: 1315; author reply 1315-4.
8. Willis GB, Royston P and Bercini D. The use of verbal report methods in the development and testing of survey questionnaires. *Appl Cogn Psychol* 1991; 5: 251–267.
9. Jobe JB. Cognitive psychology and self-reports: models and methods. *Qual Life Res* 2003; 12: 219–227.
10. Tourangeau R. Cognitive sciences and survey methods. In: Jabine TB, Straf ML, Tanur JM, et al. (eds) *Cognitive aspects of survey methodology: building a bridge between disciplines*. Washington, DC: National Academy Press, 1984, pp. 73–101.
11. Johnson C, Aaronson N, Blazeby JM, et al. *EORTC Quality of Life Group: guidelines for developing questionnaire modules*, [http://groups.eortc.be/qol/sites/default/files/archives/guidelines\\_for\\_developing\\_questionnaire\\_final.pdf](http://groups.eortc.be/qol/sites/default/files/archives/guidelines_for_developing_questionnaire_final.pdf) (2011, accessed 6 March 2015).
12. Abernethy AP, Shelby-James T, Fazekas BS, et al. The Australia-modified Karnofsky Performance Status (AKPS) scale: a revised scale for contemporary palliative care clinical practice [ISRCTN81117481]. *BMC Palliat Care* 2005; 4: 1–12.
13. Antunes B, Daveson BA, Ramsenthaler C, et al. *The Palliative care Outcome Scale Manual for cross-cultural adaptation and psychometric validation*, 2012, <http://pos-pal.org/Resources.php>
14. Willis GB. *Cognitive interviewing: a tool for improving questionnaire design*. 2005. Thousand Oaks, CA: SAGE.
15. Beatty PC and Willis G. Research synthesis: the practice of cognitive interviewing. *Public Opin Q* 2007; 71: 287–311.
16. Malik F, Higginson IJ and Gysels M. Sleep disturbances in advanced disease: a systematic literature review of assessment methods. *Palliat Med* 2008; 22: 449.
17. Selman L, Speck P, Gysels M, et al. 'Peace' and 'life worthwhile' as measures of spiritual well-being in African palliative care: a mixed-methods study. *Health Qual Life Outcomes* 2013; 11: 94.
18. Bergh I, Kvaalem IL, Aass N, et al. What does the answer mean? A qualitative study of how palliative cancer patients interpret and respond to the Edmonton Symptom Assessment System. *Palliat Med* 2011; 25: 716–724.
19. Watanabe S, Nikolaichuk C, Beaumont C, et al. The Edmonton symptom assessment system – what do patients think? *Support Care Cancer* 2009; 17: 675–683.
20. Murtagh FE, Addington-Hall JM and Higginson IJ. The value of cognitive interviewing techniques in palliative care research. *Palliat Med* 2007; 21: 87–93.
21. Ahmed N, Bestall JC, Payne SA, et al. The use of cognitive interviewing methodology in the design and testing of a screening tool for supportive and palliative care needs. *Support Care Cancer* 2009; 17: 665–673.
22. Lee J. Conducting cognitive interviews in cross-national settings. *Assessment* 2012; 21: 227–240.
23. Brandt BA, Angun C, Coyne KS, et al. LUTS patient reported outcomes tool: linguistic validation in 10 European languages. *NeuroUrol Urodyn* 2013; 32: 75–81.
24. Wallen GR, Middleton KR, Rivera-Goba MV, et al. Validating English- and Spanish-language patient-reported outcome measures in underserved patients with rheumatic disease. *Arthritis Res Ther* 2011; 13: R1.

## Appendix I

### Topic guide

#### *Integrated Palliative care Outcome Scale (IPOS) pilot survey (Phase I)*

##### Objective:

- To explore the cognitive processes used by respondents when reading, interpreting and responding to items on the IPOS questionnaire.

##### Introduction:

- Study purpose, confidentiality, able to stop at any time, decline questions.
- I'm going to show you a questionnaire and I want you to read and answer the questions one at a time.
- We will stop and talk about each question before moving onto the next.
- Please try to 'think out loud' as you read and answer the questions (*DEMONSTRATE: that is, When the question is 'What did you have for breakfast?', instead of answering 'Porridge' I would say 'Well I was running late for work this morning so I picked up a croissant and a coffee on the way to work, which I ate at my desk'*).
- I will also ask you some more specific things about each question.
- Apologies if the questions get repetitive.
- In this study, we are less interested in your answers to the questions, but *how you arrive* at the answers – what you think the question means, and the things you were thinking about when you chose your answer.
- You can tell me *any* thoughts or views you might have about the questions.

----- START RECORDING -----

##### • *General:*

- What were you thinking about when you answered that question?
- I noticed you hesitated before giving your answer – what were you thinking about then?

##### • *Comprehension: what does the respondent believe the question to be asking?*

- What does the question mean to you, in your own words?
- What does the word XXXXXX mean to you? (if certain words are thought to be problematic)
- How easy or difficult was it to understand this question?
- (If problem) How would you change this question?

##### • *Retrieval: could they recall the information required by the question? Was the time frame suitable?*

- How well could you remember your experience when answering this question?
- Was it easy or difficult to think about the past (week) when answering this question?
- Would there be a different time period that would be easier to understand?

##### • *Judgement: is the respondent able to make an evaluation based on the information recalled?*

- What were you thinking about when you answered this question?
- How did you arrive at your answer to that question?
- Was that easy or hard to arrive at your answer? Why do you say that?
- How sure are you of the answer to this question?

##### • *Response: is the respondent able to map their internally generated answer to a response option?*

- How did you choose your answer to this question?

- Was it hard or easy to select an answer from the options given?
- Did all options make sense for this question?
  
- *Other:*
  - Is there anything else you would like to say about this question?/The questionnaire as a whole?
  - Did you find any of the questions upsetting?/embarrassing?/inappropriate?
  - Are there any topics/questions that you would leave out of this questionnaire?
  - Are there any topics/questions that you would add to this questionnaire?
  - Do you have any thoughts about the way your answers were captured? (i.e. tablet/paper)

----- THANKS + STOP RECORDING -----

The German topic guide additionally included some questions regarding the translation options of specific words.