

Primary tumor ablation in metastatic renal cell carcinoma

Lukas Scheipner, Reha-Baris Incesu, Simone Morra, Andrea Baudo, Letizia Maria Ippolita Jannello, Carolin Siech, Mario de Angelis, Anis Assad, Zhe Tian, Fred Saad, Shahrokh F. Shariat, Alberto Briganti, Felix K.H. Chun, Derya Tilki, Nicola Longo, Luca Carmignani, Ottavio De Cobelli, Martin Pichler, Sascha Ahyai, Pierre I. Karakiewicz

Angaben zur Veröffentlichung / Publication details:

Scheipner, Lukas, Reha-Baris Incesu, Simone Morra, Andrea Baudo, Letizia Maria Ippolita Jannello, Carolin Siech, Mario de Angelis, et al. 2025. "Primary tumor ablation in metastatic renal cell carcinoma." *Urologic Oncology: Seminars and Original Investigations* 43 (5): 332.e11–18. <https://doi.org/10.1016/j.urolonc.2024.10.019>.

Clinical-Kidney cancer
Primary tumor ablation in metastatic renal cell carcinoma

Lukas Scheipner, M.D.^{a,b,*}, Reha-Baris Incesu, M.D.^{a,c}, Simone Morra, M.D.^{a,d},
Andrea Baudo, M.D.^{a,e}, Letizia Maria Ippolita Jannello, M.D.^{a,f,g}, Carolin Siech, M.D.^{a,h},
Mario de Angelis, M.D.^{a,i}, Anis Assad, M.D.^a, Zhe Tian, M.Sc.^a, Fred Saad, M.D.^a,
Shahrokh F. Shariat, M.D.^{j,k,l,m}, Alberto Briganti, M.D.ⁱ, Felix K.H. Chun, M.D.^h,
Derya Tilki, M.D.^{c,n,o}, Nicola Longo, M.D.^d, Luca Carmignani, M.D.^{e,p},
Ottavio De Cobelli, M.D.^{f,g,q}, Martin Pichler, M.D.^{r,s}, Sascha Ahyai, M.D.^b,
Pierre I. Karakiewicz, M.D.^a

^a Cancer Prognostics and Health Outcomes Unit, Division of Urology, University of Montréal Health Center, Montréal, Québec, Canada

^b Department of Urology, Medical University of Graz, Graz, Austria

^c Martini-Klinik Prostate Cancer Center, University Hospital Hamburg-Eppendorf, Hamburg, Germany

^d Department of Neurosciences, Science of Reproduction and Odontostomatology, University of Naples Federico II, Naples, Italy.

^e Department of Urology, IRCCS Policlinico San Donato, Milan, Italy

^f Department of Urology, IEO European Institute of Oncology, Milan, Italy

^g Università degli Studi di Milano, Milan, Italy

^h Department of Urology, University Hospital Frankfurt, Goethe University Frankfurt am Main, Frankfurt am Main, Germany

ⁱ Division of Experimental Oncology/Unit of Urology, URI, Urological Research Institute, IRCCS San Raffaele Scientific Institute, Milan, Italy

^j Department of Urology, Comprehensive Cancer Center, Medical University of Vienna, Vienna, Austria

^k Department of Urology, Weill Cornell Medical College, New York, New York, USA

^l Department of Urology, University of Texas Southwestern, Dallas, Texas, US

^m Hourani Center for Applied Scientific Research, Al-Ahliyya Amman University, Amman, Jordan

ⁿ Department of Urology, University Hospital Hamburg-Eppendorf, Hamburg, Germany

^o Department of Urology, Koc University Hospital, Istanbul, Turkey

^p Department of Urology, IRCCS Ospedale Galeazzi - Sant'Ambrogio, Milan, Italy

^q Division of Oncology, Department of Internal Medicine, Medical University of Graz, Graz, Austria

^r Department of Oncology and Haemato-Oncology, Università degli Studi di Milano, Milan, Italy

^s Department of Hematology and Oncology, Medical Faculty, University of Augsburg, Augsburg, Germany

Received 17 August 2024; received in revised form 4 October 2024; accepted 16 October 2024

Abstract

Background: The role of primary tumor ablation (pTA) in metastatic renal cell carcinoma (mRCC) is unknown. We compared pTA-treated mRCC patients to patients who underwent no local treatment (NLT), as well as patients who underwent cytoreductive nephrectomy (CN).

Methods: Within the Surveillance, Epidemiology, and End Results database (SEER, 2004–2020), we identified mRCC patients who underwent either pTA, NLT or CN. Endpoints consisted of overall survival (OM) and other-cause mortality (OCM). Propensity score 1:1 matching (PSM), multivariable cox regression models (OM), as well as, multivariable competing risk regressions (CRR) models (OCM) were used.

Results: We identified 27,087 mRCC patients, of whom 82 (0.3%) underwent pTA, 17,266 (64%) NLT and 9,739 (36%) CN. In comparisons of pTA vs. NLT mRCC patients addressing OM, after 1:1 PSM, median survival was 19 months for pTA vs. 4 months for NLT patients (multivariable HR 0.3, 95% CI 0.22–0.47, $P < 0.001$). No statistically significant OCM differences were recorded in multivariable CRR (HR 1.13 95% CI 0.52–2.44, $P = 0.8$). In comparisons of pTA vs. CN, after 1:1 PSM, no statistically significant differences in OM (HR 1.22, 95% CI 0.81–1.83, $P = 0.32$), as well as OCM (HR 1.4, 95% CI 0.56–3.48, $P = 0.5$) were recorded.

Conclusion: In mRCC patients, pTA is associated with significantly lower mortality compared to NLT. Interestingly, OM rates between pTA and CN mRCC patients do not exhibit statistically significant differences. This preliminary report may suggest that pTA may provide a comparable survival benefit to CN in highly selected mRCC patients. © 2024 The Author(s). Published by Elsevier Inc. This is an open access article under the CC BY license (<http://creativecommons.org/licenses/by/4.0/>)

*Corresponding author.

E-mail address: l.scheipner@medunigraz.at (L. Scheipner).

Keywords: OM; OCM; SEER; mRCC; Ablation; Cryo ablation; Thermal ablation

Abbreviations: CN, cytoreductive nephrectomy; CRR, competing risk regression; HR, hazard ratio; IQR, interquartile range; mRCC, metastatic renal cell carcinoma; NCDB, national cancer database; NLT, no local treatment; OCM, other-cause mortality; OM, overall mortality; PSM, propensity-score matching; pTA, primary tumor ablation; RCC, renal cell carcinoma; SEER, surveillance, epidemiology, and end results; SMD, standardized mean difference

1. Introduction

In the context of localized renal cell carcinoma, primary tumor ablation (pTA) has demonstrated comparable outcomes to surgical resection [1–3]. As a result, pTA is currently recommended as an alternative treatment approach in patients with small renal masses [4,5]. In the metastatic setting, cytoreductive nephrectomy (CN) represents the gold standard in patients with favorable prognosis [4]. However, there is a lack of viable alternatives for patients who are deemed unfit for surgery. The use of minimally invasive techniques in the treatment of metastatic cancer is gaining attention, offering potential alternatives where traditional surgical options may not be feasible [6]. To date, primary tumor ablation (pTA) has only received limited attention as an alternative treatment modality in metastatic renal cell carcinoma (mRCC). To the best of our knowledge, only 3 studies have addressed pTA in the context of mRCC so far [7–9]. The complexity of treating metastatic disease, where systemic therapy is often prioritized, as well as the lack of robust clinical data supporting its efficacy in this setting, have likely contributed to the limited exploration of pTA as a viable option in mRCC treatment. In consequence, the effect of primary tumor ablation (pTA) on overall survival (OS) in metastatic renal cell carcinoma (mRCC) is unknown. We postulated, that pTA may be associated with a benefit in overall survival compared to no local treatment (NLT). Moreover, we also hypothesized, that pTA may exhibit a comparable association with mortality relative to cytoreductive nephrectomy (CN). We tested both hypotheses within the Surveillance, Epidemiology, and End Results (SEER) database (2004–2020).

2. Methods

2.1. Study population

Within the SEER database (2004–2020), we identified patients ≥ 18 years old, with histologically confirmed metastatic RCC (International Classification of Disease for Oncology site code C64.9) [10]. Autopsy or death certificate only cases were excluded, in order to avoid underestimation of survival [11]. Primary tumor ablation was defined as either cryoablation (codes 13 and 23) or heat-based thermal ablation (code 15), in accordance with established methodology [12,13]. Death was defined according to the SEER mortality code as overall mortality (OM) [14]. Additionally, other-cause mortality status (OCM; death unrelated to mRCC) was also recorded for each patient [14]. Owing to the anonymously coded design of the SEER

database, study-specific ethics approval was waived by the institutional review board [15].

2.2. Variables of interest

Demographic covariates consisted of age at diagnosis (years, continuously coded) and sex. Tumor characteristics consisted of primary tumor size (<3.0 cm vs. ≥ 3.0 cm & <6.0 cm vs. ≥ 6.0 cm vs. unknown), primary tumor extent (organ-confined vs. non-organ-confined vs. unknown), N-stage (N0 vs. N1 vs. NX), histological subtype (clear-cell vs. others) and systemic therapy (received vs. not received) [16].

2.3. Statistical analyses

First, baseline characteristics of the cohort were analyzed. Descriptive statistics included frequencies and proportions for categorical variables. Medians and interquartile ranges (IQR) were reported for continuously coded variables. Second, to optimize the comparisons between pTA vs. NLT patients, as well as pTA vs. CN patients, we relied on 1:1 propensity-score matching (PSM), according to the nearest neighbor. Specifically, in comparisons between pTA vs. NLT, PSM was applied for age, sex, primary tumor size, primary tumor extent, histological subtype and systemic therapy exposure. In comparisons between pTA vs. CN, PSM was applied for age, sex, primary tumor size, N-stage, histological subtype and systemic therapy exposure. For all propensity-score matched variables, a threshold of <0.1 in standardized mean difference (SMD) was used. The latter is indicative of clinically insignificant differences [17]. Third, Kaplan-Meier curves were used to depict OM between pTA and NLT patients, as well as pTA and CN patients. Additionally, multivariable Cox-regression models, adjusting for age, sex, primary tumor size, primary tumor extent, N-stage, histological subtype, systemic therapy exposure and year of diagnosis, were fitted to test for differences between pTA and NLT, as well as for differences in pTA and CN mRCC patients. Furthermore, we relied on cumulative incidence plots, as well as multivariable competing risks regression (CRR) models to test for differences in OCM between the groups [18]. All tests were 2 sided, with a level of significance set at $P < 0.05$. R software environment for statistical computing and graphics (version 4.1.1; R Foundation for Statistical Computing, Vienna, Austria) was used for all analyses [19].

3. Results

3.1. Overall population

The overall population consisted of 27,097 mRCC patients. Of those, 82 (0.3%) underwent pTA, 17,266 (64%) underwent no local treatment (NLT) and 9,739 (36%) underwent CN. Compared to the NLT and CN patients, pTA-treated patients were older (70 vs. 66 vs. 61 years), more often female (45 vs. 32 vs. 29%) and were less likely to undergo systemic therapy (21 vs. 39 vs. 44%). Differences in tumor characteristics existed for primary tumor size (≥ 6.0 cm: pTA 16% vs. NLT 56% vs. CN 79%), primary tumor extent (non-organ-confined: pTA 21% vs. NLT 34% vs. CN 75%), N-stage (N1: pTA 20% vs. NLT 32% vs. CN 40%) and histological subtype (clear-cell: pTA 44% vs. NLT 29% vs. CN 62%; Table 1).

3.2. Primary tumor ablation vs. no local treatment

After 1:1 PSM, 82 pTA vs. 82 NLT mRCC patients remained. Based on SMD criteria of <0.1 , no clinically meaningful differences remained between pTA and NLT patients after PSM.

3.2.1. Overall mortality

In Kaplan-Meier analyses, median survival in pTA patients was 19 months vs. 4 months in NLT patients (hazard ratio [HR] 0.39, $P < 0.0001$; Fig. 1). In multivariable

Cox regression analyses, pTA independently predicted lower OM (HR 0.32, $P < 0.001$; Table 3).

3.2.2. Other-cause mortality

In cumulative incidence plots, OCM in pTA patients was 15% vs. 11% for NLT patients ($P = 0.8$). In multivariable CRR models, no statistically significant differences in OCM between pTA and NLT patients were recorded ($P = 0.8$; Table 4).

3.3. Primary tumor ablation vs. cytoreductive nephrectomy

After 1:1 PSM, 82 pTA vs. 82 CN mRCC patients remained. Based on SMD criteria of <0.1 , no clinically meaningful differences remained between pTA and CN patients after PSM Table 2.

3.3.1. Overall survival

In Kaplan-Meier analyses, median survival in pTA patients was 19 months vs. 27 months for CN mRCC patients ($P = 0.4$; Table 3, Fig. 2). In multivariable cox regression analyses, no statistically significant differences in OM were recorded between pTA and CN patients ($P = 0.3$; Table 3).

3.3.2. Other-cause mortality

In cumulative incidence plots, OCM in pTA patients was 11% vs. 7% for CN patients ($P = 0.3$; Table 4). In

Table 1

Descriptive characteristics of 27,087 metastatic renal cell carcinoma patients, according to treatment (primary tumor ablation [pTA] vs. non local treatment [NLT] vs. cytoreductive nephrectomy [CN]), identified within the Surveillance, Epidemiology and End Results (SEER) database (2004–2020)

Characteristic	N	Overall, N = 27,087 ^a	pTA, N = 82 (0.3%) ^a	NLT, N = 17266 (64%) ^a	CN, N = 9739 (36%) ^a	p-value ^b
Age	27,087	64 (57, 73)	70 (60, 78)	66 (58, 75)	61 (54, 69)	<0.001
Sex	27,087					<0.001
Female		8,398 (31%)	37 (45%)	5,518 (32%)	2,843 (29%)	
Primary tumor size	27,087					
<3		1,144 (4.2%)	26 (32%)	827 (4.8%)	291 (3.0%)	
≥ 3 & <6		4,461 (16%)	35 (43%)	3,025 (18%)	1,401 (14%)	
≥ 6		17,317 (64%)	13 (16%)	9,633 (56%)	7,671 (79%)	
Unknown		4,165 (15%)	8 (9.8%)	3,781 (22%)	376 (3.9%)	
Primary tumor extent	27,087					<0.001
T1-T2		8,303 (31%)	53 (65%)	6,221 (36%)	2,029 (21%)	
T3-T4		13,159 (49%)	17 (21%)	5,873 (34%)	7,269 (75%)	
TX		5,625 (21%)	12 (15%)	5,172 (30%)	441 (4.5%)	
Histological subtype	27,087					<0.001
clear-cell		11,043 (41%)	36 (44%)	4,929 (29%)	6,078 (62%)	
other		16,044 (59%)	46 (56%)	12,337 (71%)	3,661 (38%)	
N- stage	27,087					<0.001
N0		15,114 (56%)	57 (70%)	9,585 (56%)	5,472 (56%)	
N1		9,349 (35%)	16 (20%)	5,439 (32%)	3,894 (40%)	
NX		2,624 (9.7%)	9 (11%)	2,242 (13%)	373 (3.8%)	
Systemic therapy received	27,087	11,120 (41%)	17 (21%)	6,772 (39%)	4,331 (44%)	<0.001

^a Median (IQR); n (%).

^b Kruskal-Wallis rank sum test; Pearson's Chi-square test.

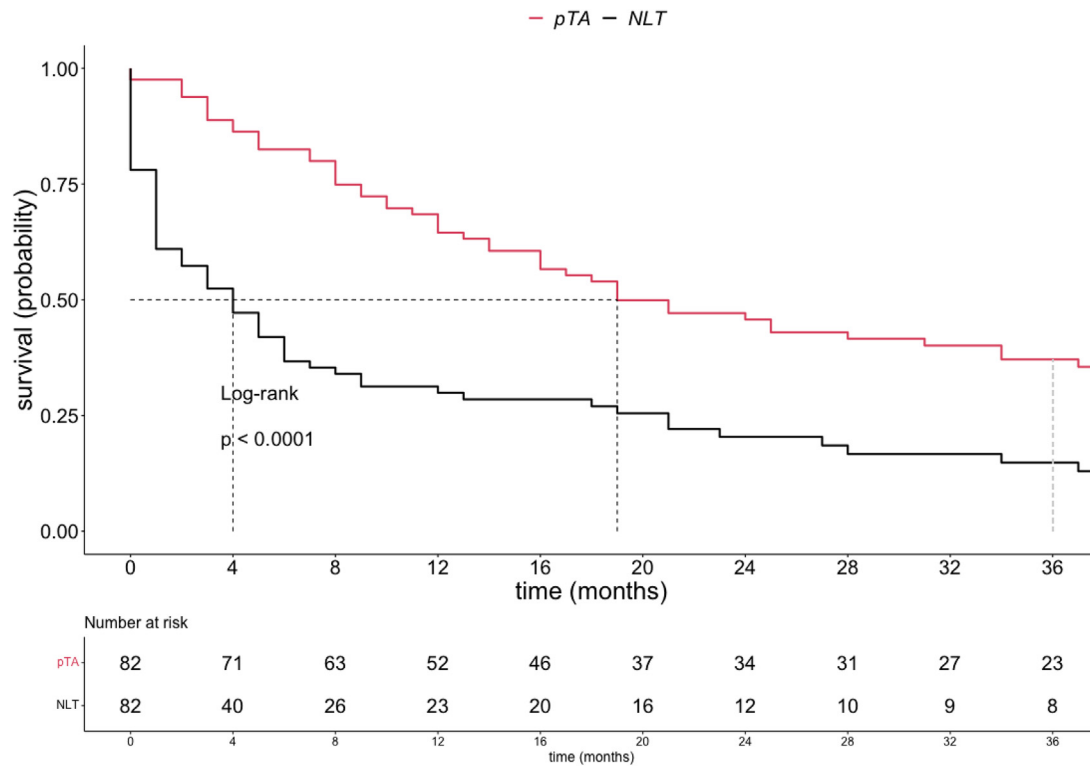


Fig. 1. Kaplan-Meier curve depicting overall survival (OS) for metastatic renal cell carcinoma (mRCC) patients who received either primary tumor ablation (pTA) or no local treatment (NLT), after 1:1 propensity score matching (PSM).

Table 2

Descriptive characteristics of 1) primary tumor ablation (pTA) vs. non-local treatment (NLT) metastatic renal cell carcinoma patients (mRCC), as well as 2) pTA vs. cytoreductive nephrectomy (CN) mRCC patients, after 1:1 propensity score matching

Characteristic	N	1) pTA vs. NLT			2) pTA vs. CN		
		pTA, N = 82 (50%) ^a	NLT, N = 82 (50%) ^a	p-value ^b	pTA, N = 82 (50%) ^a	CN, N = 82 (50%) ^a	p-value ^b
age	164	70 (60, 78)	70 (60, 77)	0.9	70 (60, 78)	71 (60, 77)	0.9
Sex	164			0.8			0.8
Female		37 (45%)	39 (48%)		37 (45%)	39 (48%)	
Primary tumor size	164			>0.9			<0.001
< 3cm		26 (32%)	28 (34%)		26 (32%)	5 (6.1%)	
≥ 3cm & < 6cm		35 (43%)	32 (39%)		35 (43%)	19 (23%)	
≥ 6cm		13 (16%)	13 (16%)		13 (16%)	50 (61%)	
Unknown		8 (9.8%)	9 (11%)		8 (9.8%)	8 (9.8%)	
Primary tumor extent	164			>0.9			>0.9
Organ-confined		53 (65%)	52 (63%)		53 (65%)	54 (66%)	
Non-organ-confined		17 (21%)	18 (22%)		17 (21%)	17 (21%)	
Unknown		12 (15%)	12 (15%)		12 (15%)	11 (13%)	
N-stage	164			0.6			>0.9
N0		57 (70%)	60 (73%)		57 (70%)	58 (71%)	
N1		16 (20%)	18 (22%)		16 (20%)	15 (18%)	
NX		9 (11%)	4 (4.9%)		9 (11%)	9 (11%)	
Histological subtype	164			0.3			0.9
clear-cell		36 (44%)	33 (40%)		36 (44%)	37 (45%)	
other		46 (56%)	49 (60%)		46 (56%)	45 (55%)	
Systemic therapy received	164			0.8			0.8
received		17 (21%)	16 (20%)		17 (21%)	18 (22%)	

^a Median (IQR); n (%).

^b Standardized Means difference.

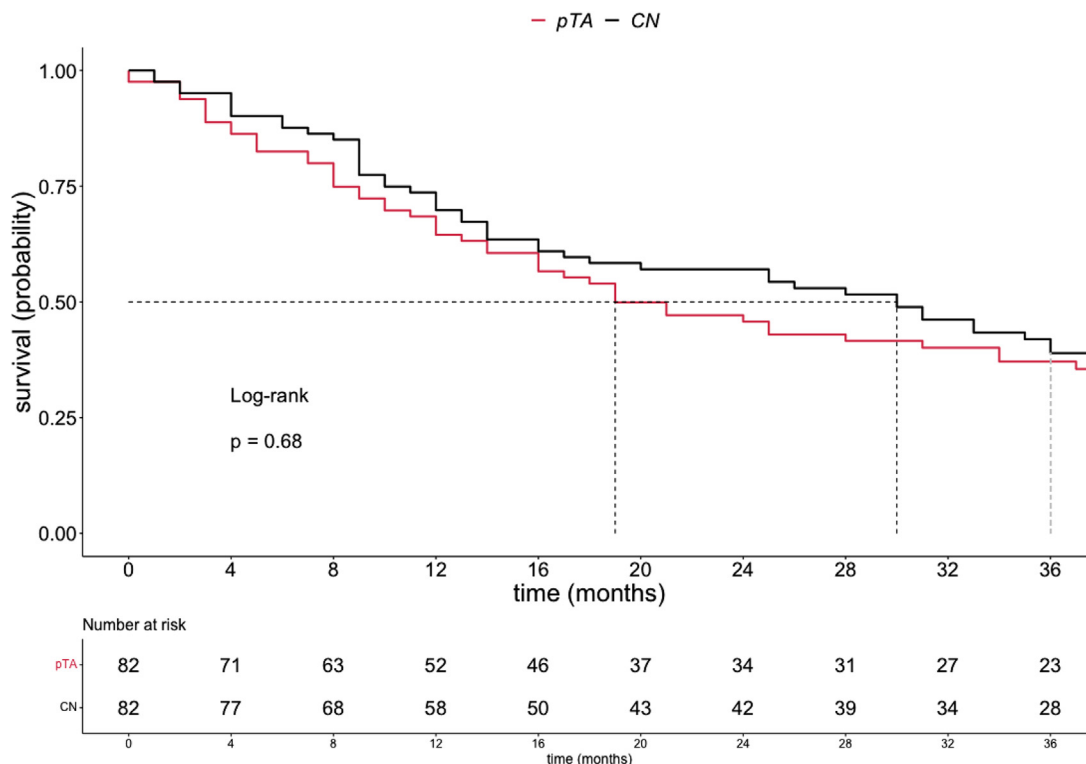


Fig. 2. Kaplan-Meier curve depicting overall survival (OS) for metastatic renal cell carcinoma (mRCC) patients who received either primary tumor ablation (pTA) or cytoreductive nephrectomy (CN), after 1:1 propensity score matching (PSM).

multivariable CRR models, no statistically significant differences in OCM were recorded between pTA and CN patients ($P = 0.5$; Table 4).

4. Discussion

It is unknown, whether in mRCC, primary tumor ablation (pTA) is associated with a survival benefit compared to

patients who underwent no local treatment (NLT). To address this knowledge gap, we compared OM rates of pTA-treated mRCC patients to those who underwent NLT. Additionally, we compared OM rates of pTA patients to those of CN-treated mRCC patients. We hypothesized that OM is lower in pTA-treated patients relative to their counterparts, who underwent NLT. We also hypothesized that OM is not different in pTA patients relative to their CN-

Table 3

Cox regression analyses predicting overall mortality (OM) in metastatic renal cell carcinoma after 1:1 propensity score matching, comparing primary tumor ablation (pTA) vs. non local treatment (NLT); as well as comparing primary tumor ablation vs. cytoreductive nephrectomy (CN)

	Primary tumor ablation vs. non local treatment		Primary tumor ablation vs. cytoreductive nephrectomy	
	univariable	multivariable ^a	univariable	multivariable ^a
OM	HR 0.39 (0.27–0.56); $P < 0.001$	HR 0.32 (0.22–0.47); $P < 0.001$	HR 1.17(0.82–1.69); $P = 0.4$	HR 1.22 (0.81–1.83) $P = 0.3$

^a Covariates in multivariable model: age, sex, primary tumor size, primary tumor extent, N-stage, histological subtype, systemic therapy, year of diagnosis.

Table 4

Competing risks regression analyses predicting other-cause mortality (OCM), adjusting for cancer-specific mortality (CSM), after 1:1 propensity score matching, comparing primary tumor ablation (pTA) vs. non local treatment (NLT); as well as comparing pTA vs. cytoreductive nephrectomy (CN)

	Primary tumor ablation vs. non local treatment		Primary tumor ablation vs. cytoreductive nephrectomy	
	univariable	multivariable ^a	univariable	multivariable ^a
OCM	HR 1.11 (0.54–2.27); $P = 0.8$	HR 1.13 (0.52–2.44); $P = 0.8$	HR 1.43(0.69–2.96); $P = 0.3$	HR 1.40 (0.56–3.48) $P = 0.5$

^a Covariates in multivariable model: age, sex, primary tumor size, primary tumor extent, N-stage, histological subtype, systemic therapy, year of diagnosis.

treated counterparts. To address potential bias that may originate from differences in OCM rates, additional comparisons addressed that endpoint (OCM). We relied on the Surveillance, Epidemiology, and End Results (SEER) database (2004–2020) to test these hypotheses. Our analyses resulted in several noteworthy observations.

First, of 27,097 mRCC patients identified within SEER between 2004–2020, only 82 patients underwent pTA. This observation indicates the extreme rarity of pTA in the setting of mRCC. Indeed, available evidence supporting the use of pTA in mRCC is scarce. To the best of our knowledge, only 3 studies addressed pTA in the context of mRCC [7–9]. Moreover, all of these studies were based on even smaller cohorts of pTA patients compared to the number of patients included in the current study. For example, Liu et al. compared 67 pTA-treated mRCC patients who also received sorafenib to patients who exclusively received sorafenib [8]. Similarly, Gu et al. [9] compared 65 pTA-treated mRCC patients who also received sunitinib to patients who exclusively received sunitinib. The extremely low numbers of pTA-treated patients in the context of mRCC recorded in the current study, as well as in all previous studies, strongly suggests the need for multi-institutional studies or population-based data repositories such as SEER or National Cancer Database (NCDB), in future analyses.

Second, we recorded important differences in baseline characteristics between pTA-, NLT- and CN-treated mRCC patients (Table 1). Specifically, pTA-treated patients were oldest (median age 70) followed by NLT- (66 years) and CN- (61 years) treated patients. In addition, they harbored significantly smaller primary tumors (<3.0 cm: pTA 32% vs. NLT 5% vs. CN 3%). Furthermore, pTA patients were least likely to undergo systemic therapy (pTA: 21% vs. NLT: 39% vs. CN 44%). Based on the presence of these important differences, we relied on multivariable adjustment to maximally reduce, or ideally eliminate, bias that may originate from these patient characteristics. Multivariable adjustment for potential patient and tumor related biases has not been applied in previous studies that addressed the association between pTA and various cancer-control outcomes in mRCC [7–9]. Additionally, we also addressed potential differences in OCM that may distinguish pTA patients from their NLT counterparts, as well as pTA patients from their CN counterparts. Here we relied on multivariable CRR modeling to maximally reduce potential bias. Previous reports have also not addressed this potentially important source of bias [7–9].

Third, in addition to multivariable adjustment, we also relied on PSM to simulate methodology used in prospective, randomized trials [20]. PSM relied on age, sex, primary tumor size, primary tumor extent, histological subtype and systemic therapy exposure in comparisons of pTA to NLT mRCC patients. Conversely, in comparisons of pTA to CN mRCC patients, PSM was applied to age, sex, primary tumor size, N-stage, histological subtype and systemic therapy exposure. Slight modifications in PSM

criteria were necessary due to the limited sample size of the groups. In consequence, the current study provides the most structured, formal and complete adjustment for potential differences between pTA and other patients.

Fourth, in comparisons between pTA vs. NLT mRCC patients, after PSM, using OM as the endpoint, we recorded a median survival of 19 months in pTA patients vs. 4 months in NLT patients (HR 0.39, $P < 0.001$). After extensive multivariable adjustment, pTA independently predicted lower OM (HR 0.32, $P < 0.001$). These observations suggest a survival advantage in pTA patients relative to their NLT counterparts. Since we are the first to report population-based results of pTA use in mRCC patients, our findings cannot be directly compared to other studies. However, our findings may be interpreted in the light of existing studies that compared pTA to NLT in smaller patient subsets [7–9]. Of those, only 1 study addressed North-American patients treated with pTA ($n=15$) vs. no pTA ($n=14$) in tremelimumab-treated patients [7]. Unfortunately, the primary endpoint of the study was safety of the treatment combination, and therefore this study cannot be compared with the current study. Conversely, the 2 remaining studies relied on Chinese patient-populations [8,9]. Specifically, Liu et al. compared pTA vs. NLT in sorafenib-treated mRCC patients unsuitable for surgical treatment [8]. In their analyses, the median survival was 36 vs. 29 months for pTA vs. NLT patients, which resulted in a univariable HR of 0.58 ($P < 0.05$). Similar to this study, Gu et al. compared pTA vs. NLT in sunitinib-treated mRCC patients [9]. Here, the median survival was 20 vs. 14 months for pTA vs. NLT patients ($P < 0.001$), respectively. Unfortunately, the absolute median survival values in these 2 Chinese cohorts are very different from the ones recorded in the current North-American study. Similarly, the relative rates expressed as hazard ratios are also of different magnitude. Taken together, the current study validates the benefit of pTA on the survival of mRCC patients in a north-American population. However, the previous reports originating from populations other than North-Americans, cannot be truly compared regarding absolute or relative survival benefits since these metrics drastically differ from metrics recorded in North-American cohorts.

Fifth, we also compared OM between pTA- vs. CN-treated mRCC patients, based on the hypothesis that pTA may be associated with similar OM as CN. After PSM, the median survival of pTA-treated mRCC patients was 19 months vs. 27 months for CN-treated mRCC patients ($P = 0.4$). However, after additional multivariable adjustment, no statistically significant differences in OM between pTA- and CN-treated mRCC patients ($P = 0.3$) were recorded. Taken together, this observation suggests, that in highly selected mRCC patients treated with pTA, survival may be comparable to that of mRCC patients treated with CN. However, such a comparison is fraught with limitations due to the scarcity and highly selective nature of mRCC patients who underwent pTA. Future studies, relying on similar

large-scale databases (e.g., NCDB) should ideally validate or refute the current study's findings.

In addition to direct comparisons of OM between pTA vs. NLT, as well as pTA vs. CN, we also addressed OCM differences in both comparisons. In pTA vs. NLT patients, no differences in OCM were recorded ($P = 0.8$). Similarly, in pTA vs. CN comparisons, also no differences in OCM were recorded ($P = 0.5$). Lack of statistically significant differences in OCM in pTA vs. NLT comparison indicates that the recorded survival benefit in pTA patients is neither driven by OCM, nor is it confounded by significant OCM differences. Similarly, lack of statistically significant OM differences in pTA vs. CN mRCC patients also did not result from confounding due to the effect of OCM. This additional adjustment adds to the robustness of the observations in favor of the OM advantage between pTA and NLT as well as, in the comparison between pTA vs. CN where no statistically significant OM difference was recorded. Unfortunately, these results cannot be compared to any previous study, since no such study exists.

Taken together, the current study represents the largest and most comprehensive study examining OM according to pTA vs. NLT in mRCC patients. Similarly, our study also shows no significant OM differences when pTA is compared to CN. This observation suggests a potential survival benefit of comparable magnitude to CN in highly selected mRCC patients who underwent pTA. Both observations warrant validation in future large-scale population based such as the National Cancer Database (NCDB) or other multi-institutional studies.

Despite the interesting findings of this study, several limitations need to be addressed. First and foremost, the retrospective nature of these analyses inevitably leads to a selection bias. This limitation is shared with all other non-prospective, nonrandomized studies. In order to minimize selection bias and account for potential confounding factors, we employed several statistical tools, including PSM and multivariable CRR models. Nonetheless, despite this statistical effort, we cannot exclude residual bias from confounders that were not recorded in the SEER database. Second, this study is limited by its relatively small sample-size of pTA patients. Despite being the largest study to date to address this topic, this limitation needs to be taken into consideration in the interpretation of our results. Third, given the relatively long time span of the study, pTA techniques may have changed or evolved towards more minimally invasive approaches. Moreover, the landscape of systemic treatment for mRCC has changed significantly during the time span covered by this study, most notably with the introduction of immunotherapy. These changes in treatment may have contributed to outcome variations in mRCC patients. To address this, all our multivariable models were adjusted for year of diagnosis. However, future prospective studies incorporating more contemporary systemic treatments will be crucial to assess their interaction with pTA and better understand the evolving treatment landscape for mRCC.

5. Conclusion

In mRCC patients, pTA is associated with significantly lower mortality compared to NLT. Interestingly, OM rates between pTA and CN mRCC patients do not exhibit statistically significant differences. This preliminary report may suggest that pTA may provide a comparable survival benefit to CN in highly selected mRCC patients. However, further studies are needed to validate these findings and better understand the potential role of pTA in the treatment of mRCC.

Availability of data and materials

All data generated for this analysis were from the Surveillance, Epidemiology, and End Results Research Plus (SEER) database. The code for the analyses will be made available upon request.

Funding

The research was conducted in the absence of any commercial or financial relationships that could be construed as a potential conflict of interest.

Declaration of competing interest

The authors declare that they have no known competing financial interests or personal relationships that could have appeared to influence the work reported in this paper.

CRediT authorship contribution statement

Lukas Scheipner: Writing – review & editing, Writing – original draft, Resources, Investigation, Formal analysis, Data curation, Conceptualization. **Reha-Baris Incesu:** Writing – review & editing, Validation, Investigation. **Simone Morra:** Validation, Software, Resources. **Andrea Baudo:** Writing – review & editing, Formal analysis, Data curation. **Letizia Maria Ippolita Jannello:** Writing – review & editing, Validation. **Carolin Siech:** Writing – review & editing, Methodology, Investigation. **Mario de Angelis:** Writing – review & editing, Data curation. **Anis Assad:** Writing – review & editing, Data curation. **Zhe Tian:** Methodology, Formal analysis, Data curation. **Fred Saad:** Writing – review & editing, Supervision. **Shahrokh F. Shariat:** Writing – review & editing, Validation, Supervision. **Alberto Briganti:** Writing – review & editing, Validation, Supervision. **Felix K.H. Chun:** Writing – review & editing, Supervision, Conceptualization. **Derya Tilki:** Writing – review & editing, Supervision. **Nicola Longo:** Writing – review & editing, Supervision. **Luca Carmignani:** Writing – review & editing, Supervision. **Ottavio De Cobelli:** Writing – review & editing, Validation. **Martin Pichler:** Writing – review & editing, Supervision. **Sascha Ahyai:** Writing – review & editing, Supervision,

Resources, Conceptualization. **Pierre I. Karakiewicz:** Writing – review & editing, Supervision.

References

- [1] Chan VW, Abul A, Osman FH, et al. Ablative therapies versus partial nephrectomy for small renal masses - A systematic review and meta-analysis. *Int J Surg.* 2022;97:106194. <https://doi.org/10.1016/j.ijvs.2021.106194>. Epub 2021 Dec 24. PMID: 3495896. <https://pubmed.ncbi.nlm.nih.gov/34958968/>.
- [2] Spiliopoulos S, Marzoug A, Ra H, Ragupathy SKA. Long-term outcomes of CT-guided percutaneous cryoablation of T1a and T1b renal cell carcinoma. *Diagn Interv Radiol* 2021;27:524–8. <https://doi.org/10.5152/DIR.2021.20342>.
- [3] Regier M, Chun F. Thermal ablation of renal tumors: indications, techniques and results. *Dtsch Arztebl Int* 2015;112:412. <https://doi.org/10.3238/ARZTEBL.2015.0412>.
- [4] Ljungberg B, Albiges L, Abu-Ghanem Y, et al. European association of urology guidelines on renal cell carcinoma: the 2022 update. *Eur Urol* 2022;82:399–410. <https://doi.org/10.1016/J.EURURO.2022.03.006>.
- [5] Aveta A, Iossa V, Spena G, et al. Ablative treatments for small renal masses and management of recurrences: a comprehensive review. *Life* 2024 2024;14:450. <https://doi.org/10.3390/LIFE14040450>.
- [6] Gandaglia G, Schattman P, De Naeyer G, et al. Novel technologies in urologic surgery: a rapidly changing scenario. *Curr Urol Rep* 2016;17:1–8. <https://doi.org/10.1007/S11934-016-0577-3/METRICS>.
- [7] Campbell MT, Matin SF, Tam AL, et al. Pilot study of Tremelimumab with and without cryoablation in patients with metastatic renal cell carcinoma. *Nature Communications* 2021;12:1–12. <https://doi.org/10.1038/s41467-021-26415-4>.
- [8] Liu C, Cao F, Xing W, et al. Efficacy of cryoablation combined with sorafenib for the treatment of advanced renal cell carcinoma. *Int J Hyperthermia* 2019;36:220–8. <https://doi.org/10.1080/02656736.2018.1556819>.
- [9] Gu CY, Wang JJ, Zhang HL, et al. Survival in metastatic renal cell carcinoma patients treated with sunitinib with or without cryoablation. *Front Oncol* 2021;11:762547. <https://doi.org/10.3389/FONC.2021.762547>.
- [10] 2023 implementation guidelines and recommendations (For NAACCR data standards and data dictionary, version 23, effective with cases. https://www.naacr.org/wp-content/uploads/2022/09/2023-Implementation-Guidelines_20220901.pdf. Accessed 1 June 2023.
- [11] Andersson TML, Myklebust TÅ, Rutherford MJ, et al. The impact of excluding or including death certificate initiated (dci) cases on estimated cancer survival: a simulation study. *Cancer Epidemiol* 2021;71:101881. <https://doi.org/10.1016/J.CANEP.2020.101881>.
- [12] Sorce G, Hoeh B, Hohenhorst L, et al. Cancer-specific mortality in t1a renal cell carcinoma treated with local tumor destruction versus partial nephrectomy. *Eur Urol Focus* 2023;9:125–32. <https://doi.org/10.1016/j.euf.2022.07.005>.
- [13] Sorce G, Hoeh B, Hohenhorst L, et al. Cancer-specific mortality after cryoablation vs heat-based thermal ablation in T1a renal cell carcinoma. *J Urol* 2023;209:81–8. <https://doi.org/10.1097/JU.0000000000002984>.
- [14] Cause of death recode - SEER recodes. <https://seer.cancer.gov/codrecode/>. Accessed 12 Jun 2023
- [15] Cancer statistics review, 1975–2018 - SEER statistics. https://seer.cancer.gov/archive/csr/1975_2018/. Accessed 5 Jun 2023
- [16] Amin MB, Greene FL, Edge SB, et al. The eighth edition AJCC cancer staging manual: continuing to build a bridge from a population-based to a more “personalized” approach to cancer staging. *CA Cancer J Clin* 2017;67:93–9. <https://doi.org/10.3322/CAAC.21388>.
- [17] Austin PC (2011) An introduction to propensity score methods for reducing the effects of confounding in observational studies. 46:399–424. <https://doi.org/10.1080/00273171.2011.568786>, https://www.naacr.org/wp-content/uploads/2022/09/2023-Implementation-Guidelines_20220901.pdf. Accessed 1 June 2023
- [18] Lau B, Cole SR, Gange SJ. Competing risk regression models for epidemiologic data. *Am J Epidemiol* 2009;170:244–56. <https://doi.org/10.1093/AJE/KWP107>.
- [19] R: the r project for statistical computing. <https://www.r-project.org/>. Accessed 4 Jun 2023
- [20] Staffa SJ, Zurakowski D. Five steps to successfully implement and evaluate propensity score matching in clinical research studies. *Anesth Analg* 2018;127:1066–73. <https://doi.org/10.1213/ANE.0000000000002787>.