

The first International Consortium for Health Outcomes Measurement (ICHOM) standard dataset for reporting outcomes in heart valve disease: moving from device- to patient-centered outcomes; developed by a multisociety taskforce coordinated by the Heart Valve Society (HVS) including the American Heart Association (AHA), the American College of Cardiology (ACC), the European Association for Cardio-Thoracic Surgery (EACTS), the European Society of Cardiology (ESC), The Society of Thoracic Surgeons (STS), the Australian & New Zealand Society of Cardiac & Thoracic Surgeons (ANZSCTS), the International Society for Applied Cardiovascular Biology (ISACB), the International Society for Minimally Invasive Cardiothoracic Surgery (ISMICS), the South African Heart Association (SHA), Heart Valve Voice, and Global Heart Hub

Emmanuel Lansac, Kevin M. Veen, Andria Joseph, Paula Blancarte Jaber, Frieda Sossi, Zofia Das-Gupta, Suleman Aktaa, J. Rafael Sádaba, Vinod H. Thourani, Gry Dahle, Wilson Y. Szeto, Faisal Bakaeen, Elena Aikawa, Frederick J. Schoen, Evaldas Girdauskas, Aubrey Almeida, Andreas Zuckermann, Bart Meuris, John Stott, Jolanda Kluin, Ruchika Meel, Wil Woan, Daniel Colgan, Hani Jneid, Husam Balkhy, Molly Szerlip, Ourania Preventza, Pinak Shah, Vera H. Rigolin, Silvana Medica, Philip Holmes, Marta Sitges, Philippe Pibarot, Erwan Donal, Rebecca T. Hahn, Johanna J. M. Takkenberg

Angaben zur Veröffentlichung / Publication details:

Lansac, Emmanuel, Kevin M. Veen, Andria Joseph, Paula Blancarte Jaber, Frieda Sossi, Zofia Das-Gupta, Suleman Aktaa, et al. 2025. "The first International Consortium for Health Outcomes Measurement (ICHOM) standard dataset for reporting outcomes in heart valve

Nutzungsbedingungen / Terms of use:

CC BY-NC-ND 4.0

disease: moving from device- to patient-centered outcomes; developed by a multisociety taskforce coordinated by the Heart Valve Society (HVS) including the American Heart Association (AHA), the American College of Cardiology (ACC), the European Association for Cardio-Thoracic Surgery (EACTS), the European Society of Cardiology (ESC), The Society of Thoracic Surgeons (STS), the Australian & New Zealand Society of Cardiac & Thoracic Surgeons (ANZSCTS), the International Society for Applied Cardiovascular Biology (ISACB), the International Society for Minimally Invasive Cardiothoracic Surgery (ISMICS), the South African Heart Association (SHA), Heart Valve Voice, and Global Heart Hub.” *Annals of Thoracic Surgery Short Reports* 3 (1): 71–85. <https://doi.org/10.1016/j.atssr.2024.05.005>.

Valve: Report

SPECIAL REPORT: ICHOM STANDARD DATASET

The First International Consortium for Health Outcomes Measurement (ICHOM) Standard Dataset for Reporting Outcomes in Heart Valve Disease: Moving From Device- to Patient-Centered Outcomes



Developed by a multisociety taskforce coordinated by the Heart Valve Society (HVS) including the American Heart Association (AHA), the American College of Cardiology (ACC), the European Association for Cardio-Thoracic Surgery (EACTS), the European Society of Cardiology (ESC), The Society of Thoracic Surgeons (STS), the Australian & New Zealand Society of Cardiac & Thoracic Surgeons (ANZSCTS), the International Society for Applied Cardiovascular Biology (ISACB), the International Society for Minimally Invasive Cardiothoracic Surgery (ISMICS), the South African Heart Association (SHA), Heart Valve Voice, and Global Heart Hub

Emmanuel Lansac, MD, PhD,^{1,*} Kevin M. Veen, MD, PhD,^{2,*} Andria Joseph, MSc,³ Paula Blancarte Jaber, MD, MSc,³ Frieda Sossi, MSc,³ Zofia Das-Gupta, PhD,³ Suleman Aktaa, MD, PhD,⁴ J. Rafael Sádaba, MD, PhD,⁵ Vinod H. Thourani, MD,⁶ Gry Dahle, MD, PhD,⁷ Wilson Y. Szeto, MD,⁸ Faisal Bakaeen, MD,⁹ Elena Aikawa, MD, PhD,¹⁰ Frederick J. Schoen, MD, PhD,¹¹ Evaldas Girdauskas, MD,¹² Aubrey Almeida, MBBS,¹³ Andreas Zuckermann, MD,¹⁴ Bart Meuris, MD, PhD,¹⁵ John Stott,¹⁶ Jolanda Kluin, MD, PhD,¹⁷ Ruchika Meel, MD, PhD,¹⁸ Wil Woan,¹⁹ Daniel Colgan,²⁰ Hani Jneid, MD,²¹ Husam Balkhy, MD,²² Molly Szerlip, MD,²³ Ourania Preventza, MD,²⁴ Pinak Shah, MD,²⁵ Vera H. Rigolin, MD,²⁶ Silvana Medica,²⁰ Philip Holmes,²⁰ Marta Sitges, MD,²⁷ Philippe Pibarot, DVM, PhD,²⁸ Erwan Donal, MD, PhD,²⁹ Rebecca T. Hahn, MD, PhD,³⁰ and Johanna J. M. Takkenberg, MD, PhD²

Accepted for publication Jan 25, 2024.

*Drs Lansac and Veen contributed equally to this work.

The article has been copublished with permission in *Circulation: Cardiovascular Quality and Outcomes*; *JACC: Advances*; *European Journal of Cardio-Thoracic Surgery*; *European Heart Journal-Quality of Care & Clinical Outcomes*; *Annals of Thoracic Surgery Short Reports*; *Innovations: Technology and Techniques in Cardiothoracic and Vascular Surgery*; and *Journal of the Heart Valve Society*.

The articles are identical except for minor stylistic differences in keeping with each journal's style. When citing this article, a citation from any journal is appropriate.

The Society of Thoracic Surgeons requests that this article be cited as: Lansac E, Veen KM, Joseph A, et al. The First International Consortium for Health Outcomes Measurement (ICHOM) Standard Dataset for Reporting Outcomes in Heart Valve Disease: Moving From Device- to Patient-Centered Outcomes. *Ann Thorac Surg Short Reports*. 2025;3:71-85.

¹Hôpital Pitié-Salpêtrière, Sorbonne Université, Paris, France; ²Department of Cardiothoracic Surgery, Erasmus MC, Rotterdam, the Netherlands; ³International Consortium for Health Outcomes Measurement, London, United Kingdom; ⁴Department of Cardiology, Leeds Teaching Hospitals NHS Foundation Trust and Leeds Institute of Cardiovascular and Metabolic Medicine, Leeds, United Kingdom; ⁵Department of Cardiac Surgery, Navarra University Hospital, Pamplona, Spain; ⁶Department of Cardiovascular Surgery, Marcus Valve Center, Piedmont Heart Institute, Atlanta, Georgia; ⁷Department of Cardiothoracic Surgery, Oslo University Hospital, Oslo, Norway; ⁸Division of Cardiothoracic Surgery, University of Pennsylvania, Philadelphia, Pennsylvania; ⁹Department of Thoracic and Cardiovascular Surgery, Cleveland Clinic Main Campus, Cleveland, Ohio; ¹⁰Division of Cardiovascular Medicine, Department of Medicine, Brigham and Women's Hospital, Harvard Medical School, Boston, Massachusetts; ¹¹Department of Pathology, Brigham and Women's Hospital, Harvard Medical School, Boston, Massachusetts; ¹²Department of Cardiothoracic Surgery, Augsburg University Hospital, Augsburg, Germany; ¹³Monash Medical Centre, Melbourne, Victoria, Australia; ¹⁴Department of Cardiac Surgery, Medical University of Vienna, Vienna, Austria; ¹⁵Department of Cardiovascular Sciences, KU Leuven, Leuven, Belgium; ¹⁶Heart Valve Voice Canada, Toronto, Ontario, Canada; ¹⁷Department of Cardiothoracic Surgery, Erasmus MC, Rotterdam, the Netherlands; ¹⁸Department of Internal Medicine, Faculty of Health Sciences, School of Clinical Medicine, University of the Witwatersrand, Johannesburg, South Africa; ¹⁹Heart Valve Voice, Manchester, United Kingdom; ²⁰Independent Patient Representative; ²¹University of Texas Medical Branch, Galveston, Texas; ²²Division of Biological Sciences, Department of Surgery, University of Chicago Medicine, Chicago, Illinois; ²³Baylor Scott & White The Heart Hospital Plano, Plano, Texas; ²⁴Division of Cardiothoracic Surgery, University of Virginia, Charlottesville, Virginia; ²⁵Heart and Vascular Center, Brigham and Women's Hospital, Boston, Massachusetts; ²⁶Northwestern University Feinberg School of Medicine, Chicago, Illinois; ²⁷Hospital Clinic Cardiovascular Institute, Barcelona, Spain; ²⁸Quebec Heart and Lung Institute, Quebec City, Quebec, Canada; ²⁹Department of Cardiology, University Hospital of Rennes, Rennes, France; and ³⁰Department of Cardiology, Columbia Structural Heart & Valve Center, Columbia University, New York, New York

Address correspondence to Dr Takkenberg, Department of Cardiothoracic Surgery, RG633; Erasmus University Medical Center; P.O. Box 2040; 3000CA Rotterdam, The Netherlands; email: j.j.m.takkenberg@erasmusmc.nl.

ABSTRACT

BACKGROUND Globally significant variation in treatment and course of heart valve disease (HVD) exists, and outcome measurement is procedure focused instead of patient focused. This article describes the development of a patient-related (International Consortium for Health Outcomes Measurement) standard set of outcomes and case mix to be measured in patients with HVD.

METHODS A multisociety working group was formed that included patient representatives and representatives from scientific cardiology and cardiothoracic surgery societies that publish current guidelines for HVD. The standard set was developed to monitor the patient's journey from diagnosis to treatment with either a surgical or transcatheter procedure. Candidate clinical and patient-reported outcome measures (PROMs) and case mix were identified through benchmark analyses and systematic reviews. Using an online modified Delphi process, the working group voted on final outcomes/case mix and corresponding definition.

RESULTS Patients with aortic/mitral/tricuspid valve disease or root/ascending aorta >40 mm were included in the standard set. Patients entered the dataset when the diagnosis of HVD was established, allowing outcome measurement in the preprocedural, periprocedural, and postprocedural phases of patients' lives. The working group defined 5 outcome domains: vital status, patient-reported outcomes, progression of disease, cardiac function and durability, and complications of treatment. Subsequently, 16 outcome measures, including 2 patient-reported outcomes, were selected to be tracked in patients with HVD. Case-mix variables included demographic factors, demographic variables, echocardiographic variables, heart catheterization variables, and specific details on aortic/mitral/tricuspid valves and their specific interventions.

CONCLUSIONS Through a unique collaborative effort between patients and cardiology and cardiothoracic surgery societies, a standard set of measures for HVD was developed. This dataset focuses on outcome measurement regardless of treatment, moving from procedure- to patient-centered outcomes. Implementation of this dataset will facilitate global standardization of outcome measurement, allow meaningful comparison between health care systems and evaluation of clinical practice guidelines, and eventually improve patient care for those experiencing HVD worldwide.

(Ann Thorac Surg Short Reports 2025;3:71-85)

© 2025 The Authors. Published by Elsevier Inc. on behalf of The Society of Thoracic Surgeons.

This is an open access article under the CC BY-NC-ND license

(<http://creativecommons.org/licenses/by-nc-nd/4.0/>).

Hear valve disease (HVD) is a major cause of mortality and quality of life impairment worldwide.^{1,2} The direct costs of aortic valve disease are estimated to be \$10.2 billion in the United States.³ Aging population and improvements in diagnostic strategies led to an increase in the incidence and prevalence of HVD in recent years, with an anticipated rise in the proportion of people >60 years of age from 10% to 21%.⁴ As a result, it is estimated that the number of patients requiring heart valve interventions will sharply increase in the coming decades.⁵ Although degenerative HVD predominates in high-income countries, rheumatic disease remains the major challenge in low- to middle-income countries.⁶

Many clinical practice guidelines exist on HVD with recommendations for diagnosis, monitoring,

and treatment for different settings of the disease.^{4,7} However, tools that standardize the methods by which patient outcomes are reported are lacking, limiting the opportunity to evaluate care quality globally.

Studies pertinent to HVD tend to focus on procedural or device outcomes and less on other (patient-reported) outcomes that are also important to patients. Efforts have been made to standardize clinical outcomes reporting in heart valve research by the Valve Academic Research Consortium (VARC) of experts.⁸⁻¹⁰ These outcome definitions provide an excellent and detailed overview of important end points. However, they have been developed for clinical trials and are designed to evaluate procedural outcomes rather than disease outcomes that are relevant to patients' physical and mental well-being and

longevity of life. Furthermore, because these criteria have not been validated through a multi-society endorsement process, disagreement exists among scientific societies on outcome definitions, limiting proper evaluation of patients' outcomes worldwide.¹¹

These developments called for a globally inclusive standard set of patient-centered outcome measures (referred to as Set herein) for HVD that can facilitate a standardized method for capturing and measuring existing guidelines, as well as patients' long-term outcomes, regardless of their treatment (surgical and transcatheter procedure). It was developed by an HVD working group from the International Consortium for Health Outcomes Measurement (ICHOM) to monitor the patient's journey from diagnosis, including potential treatments.

ICHOM, founded in 2012, seeks to promote alignment of outcome measurements globally using standardized outcome measurement. The goal of the HVD working group, which included patient representatives and a multisociety working group, was to develop a Set for HVD to improve patient care and to allow comparison of health care systems and treatment strategies. The HVD working group aimed to balance the amount and complexity of included outcomes with sufficient detail to ensure an implementable set of measures and meaningful comparison.

METHODS

WORKING GROUP COMPOSITION. This Set was initiated by the Heart Valve Society, and the HVD working group included representatives from the American Heart Association, American College of Cardiology, the European Association for Cardio-Thoracic Surgery, the European Society of Cardiology, The Society of Thoracic Surgeons, the Australian & New Zealand Society of Cardiac & Thoracic Surgeons, the International Society for Applied Cardiovascular Biology, the International Society for Minimally Invasive Cardiothoracic Surgery, the South African Heart Association, and Heart Valve Voice Canada and UK branches, affiliates of the Global Heart Hub, a cardiovascular disease patient-led organization. In addition, the HVD working group included experts in the field, including epidemiology and public health, patient representatives, and patient advocates. HVD working group members were identified through published works, position in relevant societies, ICHOM's professional network, or expert recommendations. Industry

representatives were deliberately excluded from the working group. In total, 24 members from 12 countries were included. The HVD working group was led by 2 chairs (J.J.M.T. and E.L.) with expertise in HVD, epidemiology, and shared decision-making. A project team was also formed that included project managers (A.J. and P.B.J.) and a research fellow (K.M.V.) to coordinate the process and to provide supporting research efforts.

OBJECTIVES. The primary objective was to develop a Set for patients with HVD (aortic, mitral, and tricuspid) that can be tracked by physicians and health care systems. This Set allows patients and physicians to monitor HVD throughout the patient's journey. These outcomes are related to survival, valve function, quality of life, physical fitness, and treatment-related outcomes. The secondary aim was to identify a set of case-mix variables (eg, morbidity) to ensure comparison of outcomes across health care systems and to allow risk adjustment.

CANDIDATE CASE MIX AND OUTCOMES. The project team identified a list of candidate case-mix variables and outcomes using a 3-pillar approach. This approach consisted of (1) a benchmark review of large registries, (2) a data visualization approach to screen commonly used words in all abstracts concerning HVD in MEDLINE, and (3) a systematic search to identify outcomes in literature using an iterative algorithm of selecting new articles until a full saturation of outcomes and case-mix variables was achieved (ie, when no new outcomes or case mix was identified in successive rounds of article selections). These 3 pillars were combined to obtain a comprehensive list of candidate outcome measures and case-mix variables. The details of these approaches are discussed in an accompanying methodology article.¹² In cases of PROMs, a separate systematic search was performed that yielded 856 articles, all of which were reviewed. The search for clinical outcome measures and case mix yielded 17 322 articles. The search terms for the clinical and case-mix outcomes and for the PROMs are provided in [Supplemental Text 1](#) and [2](#).

PROCESS. The modified Delphi process was used to reach consensus in all major decision areas, including the target population to be covered, the final outcome and case-mix set, definitions of outcomes, and time points of measurements.¹³ In accordance with this method, 11 teleconference calls were organized between December 15, 2020, and April 12, 2022, and multiple surveys among the HVD working group members were used to

reach consensus (Supplemental Figure 1). Before each teleconference, the HVD working group members received the supporting research (eg, the list with candidate outcomes measures), which was discussed during the teleconference. After the teleconference, a survey was computed to address each discussion point and potential outcomes/case mix or definitions. HVD working group members considered several criteria for selecting the variables, including the frequency of the outcome, the effect of the outcome of patients' lives, and the feasibility of data collection. For the selections of PROMs, key domains of patients' lives (eg, functional, mental health) were considered. If a majority of two-thirds was reached in the HVD working group, the decision was adopted; if this majority was not reached, the topic was discussed further in the next teleconference after another survey. If the threshold was not reached in the second survey, a majority decision was adopted. In cases of specific subjects (eg, defining valve regurgitations), additional calls with experts were organized.

RESULTS

POPULATION. The target population for this Set includes all adult patients (≥ 18 years of age) with HVD, including the aortic, mitral, or tricuspid valves. Disease of the pulmonary valve was excluded because most of the underlying cause is congenital and a set encompassing congenital heart disease already exists.¹⁴ Patients may be included in the Set if they have at least moderate aortic and mitral valve stenosis,

significant tricuspid valve stenosis, or grade II or higher regurgitation of the aortic, mitral valve, more than moderate tricuspid valve regurgitation, or root/ascending aorta dilatation >40 mm (Table 1). If the patient's first presentation is at intervention, it was decided that they may be included at the time of the intervention.

CANDIDATE OUTCOME/CASE-MIX SCREENING. To inform the HVD working group of potential outcomes and case mix used in medical literature, the 3 approaches were combined. In total, 6 HVD registries¹⁷⁻²² were chosen (Supplemental Table 1), in combination with 4 consensus articles, including the publication by Akins and colleagues²³ and the VARC-1/2/3 guidelines on reporting⁸⁻¹⁰ as benchmark review. The WordCloud of the machine learning algorithm is presented in Supplemental Figure 2. For outcomes, 150 references were screened until full saturation of candidate outcomes was achieved, encompassing 52 candidate outcomes. For case mix, 125 articles were screened, encompassing 330 case-mix variables. For PROMs, 856 articles were screened, encompassing 60 potential PROMs.

OUTCOME SET. The HVD working group defined 5 domains: vitals status, patient-reported outcomes, progression of disease, cardiac function and durability, and complications of treatment. Subsequently, 16 outcomes were selected to be tracked in the target population (Figure 1), of which some outcomes measures were further subdivided (Tables 2, 3).

OUTCOME DEFINITIONS. In several HVD registries, trials, and methodology articles, definitions of the included outcomes differed. To increase

TABLE 1 Inclusion Criteria for the Standard Set

Valve	Hemodynamics	Measurement	Values
Aortic	Grade II or higher valve regurgitation Moderate or higher valve stenosis ¹⁵	Grade II or higher regurgitation	See Table 3
		Peak velocity	≥ 3.0 m/s
	Root/ascending dilatation	Mean gradient	≥ 20 mm Hg
		Aortic valve area	≤ 1.5 cm ²
		Indexed aortic valve area	≤ 0.85 cm ² /m ²
		Velocity ratio	≤ 0.50
	Root/ascending diameter	>40 mm	
Mitral	Grade II or higher valve regurgitation Moderate or higher valve stenosis ¹⁶	Grade II or higher regurgitation	See Table 4
		Valve area (specific finding)	≤ 1.5 cm ²
		Mean gradient (supportive finding)	≥ 10.0 mm Hg
Tricuspid	Grade moderate or higher valve regurgitation Significant valve stenosis ¹⁶	Grade moderate or higher regurgitation	See Table 5
		Mean pressure gradient	≥ 5.0 mm Hg
	Inflow time-velocity integral	>60 cm	
	T _{1/2}	≥ 190 ms	
	Valve area	≤ 1.0 cm ²	

granularity, the project group collected all definitions of the included outcomes, and the HVD working group voted on the most appropriate definition for each of them. This was done considering that this is a patient-centered set and that the most appropriate definition should affect patients' lives and not be subclinical. Most of the definitions selected were based on previous VARC publications⁸⁻¹⁰ and the Akins and colleagues²³ reporting guidelines to increase integration of existing databases and registries with the proposed dataset. In cases of postprocedural myocardial infarction, the HVD working group selected the Fourth Universal Definition of Myocardial Infarction.²⁴ For a bleeding event, the HVD working group deviated from the VARC definition by excluding the hemoglobin drop because this may be caused by hemodilution during surgery and hemoglobin drop alone may have no effect on patients' postoperative courses, whereas transfusion may have a profound effect.^{11,25} Definitions of all outcomes are presented in [Tables 2 and 3](#) and in the [Supplemental Reference Guide](#).

PATIENT-REPORTED OUTCOME MEASURES. A review of PROMs used to provide health-related quality of life assessment in the setting of HVD revealed that 60 PROMs have previously been used in research settings, most of which have not been validated in the HVD population. Two PROMs were selected to monitor health-related quality of life, mental state, physical fitness, symptoms, and impact of HVD on daily life: the EQ-5D-5L questionnaire (EuroQol Group) and the Heart Valve Disease Impact on Daily Life Questionnaire.

The EQ-5D-5L questionnaire was selected to monitor quality of life and mental state.²⁶ The questionnaire comprises 5 dimensions: mobility, self-care, usual activities, pain/discomfort, and anxiety/depression. Each dimension has 5 levels: no problems, slight problems, moderate problems, severe problems, and extreme problems. The patient is asked to indicate their health state by ticking the box next to the most appropriate statement in each of the 5 dimensions. This decision results in a 1-digit number that expresses the level selected for that dimension. The digits for the 5 dimensions can be combined into a 5-digit number that describes the patient's health state. This specific questionnaire was specifically not validated in the HVD population but was validated in patients with myocardial infarction.³² The HVD working

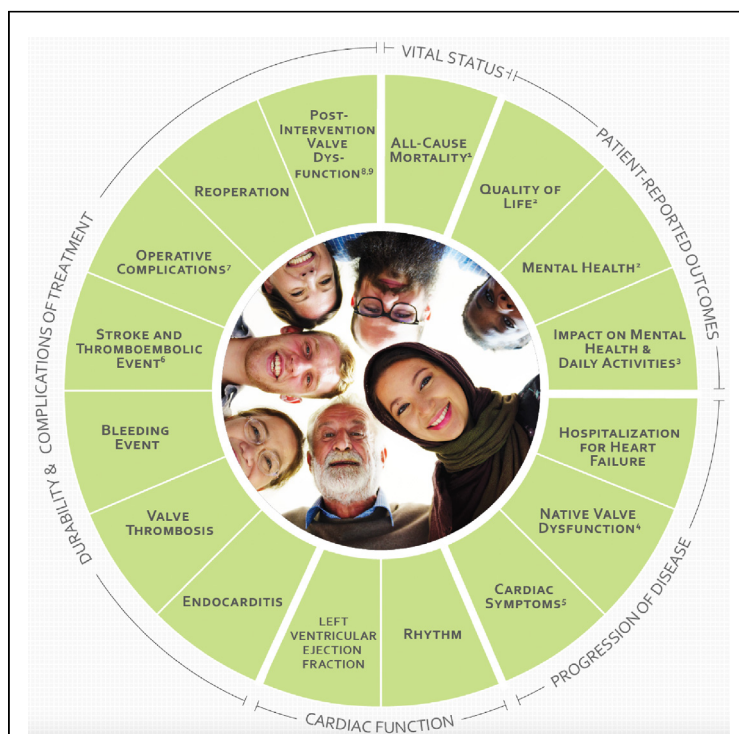


FIGURE 1 Core domains and included outcomes. (1) Includes early mortality, late mortality, valve-related mortality, and all-cause mortality. (2) Defined by the EQ-5D-5L (EuroQol Group) questionnaire. (3) Defined by the Heart Valve Disease Impact on Daily Life Questionnaire. (4) Includes aortic/mitral/tricuspid valve stenosis and aortic/mitral/tricuspid valve regurgitation. (5) Includes angina pectoris and New York Heart Association functional class. (6) Includes stroke (ischemic/hemorrhagic) and thromboembolic event (noncerebral). (7) Includes conversion to open heart surgery, reoperation for bleeding, periprocedural myocardial infarction, new permanent pacemaker, major/minor paravalvular insufficiency, and low-cardiac-output syndrome. (8) Includes percutaneous devices). (9) Refers to structural deterioration and nonstructural valve dysfunction.

group selected this tool because it is widely used and easy to administer to patients.

To measure the impact of the HVD on patient's daily life, the HVD working group selected the Heart Valve Disease Impact on Daily Life Questionnaire, which was validated in patients with HVD, and has good validity and reliability.^{27,33,34} The questionnaire consists of 14 items; its concept is that the impact is the product of the perceived consequence of the disease (part A) and the assessment of the consequence (part B), measured on a Likert scale 1 to 5 for both parts. The total score can vary between 14 and 350. A high score means that the patient perceives negative consequences of the disease in their life and these consequences are, in fact, interpreted as negative. A low score means that the patient does not perceive the negative

TABLE 2 Definition of Domains: Vital Status, Patient-Reported Outcomes, Progression of Disease, and Cardiac Function

Domain	Outcomes/Subdivision	Definition/Questionnaire
Vital status	Mortality	
	1. All-cause mortality	1. Indicate whether the person has died regardless of cause
	2. 30-d mortality	2. Mortality after 30 d after a surgical/percutaneous intervention
	3. Late mortality	3. Indicate whether the person has died regardless of cause >30 d after intervention
	4. Valve-related mortality	4. Valve-related mortality is any death caused by structural valve deterioration, nonstructural dysfunction, valve thrombosis, embolism, valve-related bleeding, or prosthetic valve endocarditis; death related to reintervention on the operated valve; or sudden unexplained death.
Patient-reported outcomes	Quality of life	EQ-5D-5L questionnaire ²⁶
	Mental health	Heart Valve Disease Impact on Daily Life Questionnaire ²⁷
	Impact on mental health and daily activities	
Progression of disease	Hospitalization for heart failure	Unplanned hospital admission for clinical treatment for heart failure
	Native valve dysfunction	
	1. Aortic stenosis/regurgitation	1. Measured as continuous maximum transvalvular gradient/velocity and aortic valve area (stenosis) and as grade 1-4 regurgitation (Table 3)
	2. Mitral stenosis/regurgitation	2. Measured as continuous mean transvalvular gradient/velocity and mitral valve area (stenosis) and as grade 1-4 regurgitation (Table 4)
	3. Tricuspid stenosis/regurgitation	3. Measured as continuous mean transvalvular gradient as grade 1-3 regurgitation (Table 5)
Cardiac symptoms	1. Dyspnea	1. NYHA classification ²⁸
	2. Angina pectoris	2. CCS angina classification ²⁹
	Rhythm	Baseline rhythm of the patient at time of measurement coded as sinus, AF, paced, and other. If a patient has a permanent/temporary pacemaker but has AF/sinus on ECG, AF/sinus should be coded.
Cardiac function	Left ventricular ejection fraction	Left ventricular ejection fraction in percentage; can be measured by 2D/3D echocardiography or MRI

2D, 2-dimensional; 3D, 3-dimensional; AF, atrial fibrillation or flutter; CCS, Canadian Cardiovascular Society; ECG, electrocardiogram; MRI, magnetic resonance imaging; NYHA, New York Heart Association.

consequences of the disease and its treatment, and if they do occur, the patient does not feel that they are too limiting.³⁴ This questionnaire has additionally been validated in patients with heart failure and coronary artery disease.^{35,36}

For the measure of symptoms, the New York Heart Association classification was selected for dyspnea, and the Canadian Cardiovascular Society grade for angina pectoris was selected; both are 1-question gradations of symptom severity.^{28,29}

CASE-MIX ADJUSTMENT. Case-mix variables were categorized as demographic variables; echocardiographic variables; heart catheterization variables; and specific details on aortic, mitral, and tricuspid valves and their specific interventions. To allow meaningful comparison among patients undergoing different treatment strategies, 171 case-mix variables were selected. In a post hoc addition, 1 case-mix variable was added (dissection at surgery), and 2 case-mix variables on aortic dimensions were allowed to be measured repeatedly. Not all case-mix variables may be applicable for an individual patient because treatment variables are not applicable if a patient does not undergo invasive treatment,

and, for example, specific mitral or tricuspid variables are not applicable for patients with isolated aortic valve disease. Furthermore, the treatment-related case-mix variables have a hierarchical structure (eg, case-mix variables for percutaneous treatment are not applicable for patients undergoing surgical treatment and vice versa). All case-mix variables are presented in the [Supplemental Reference Guide](#), and the simplified hierarchical structure of the case mix is illustrated by 3 cases in [Figure 2](#). The full hierarchical structure of treatment related case mix is displayed in [Supplemental Figure 3](#). The HVD working group chose to include specific valve repair devices and valve models implanted surgically or by transcatheter to allow meaningful comparison between treatment modalities. This implies that the Set should be updated as novel devices become available. The HVD working group recommends updating the Set every 5 years.

TIME POINTS. The HVD working group recommends collecting case-mix variables, clinical outcome measures, and PROMs at the index event, which is defined as when the patient enters the

TABLE 3 Definition of Durability and Complication of Treatment Domain

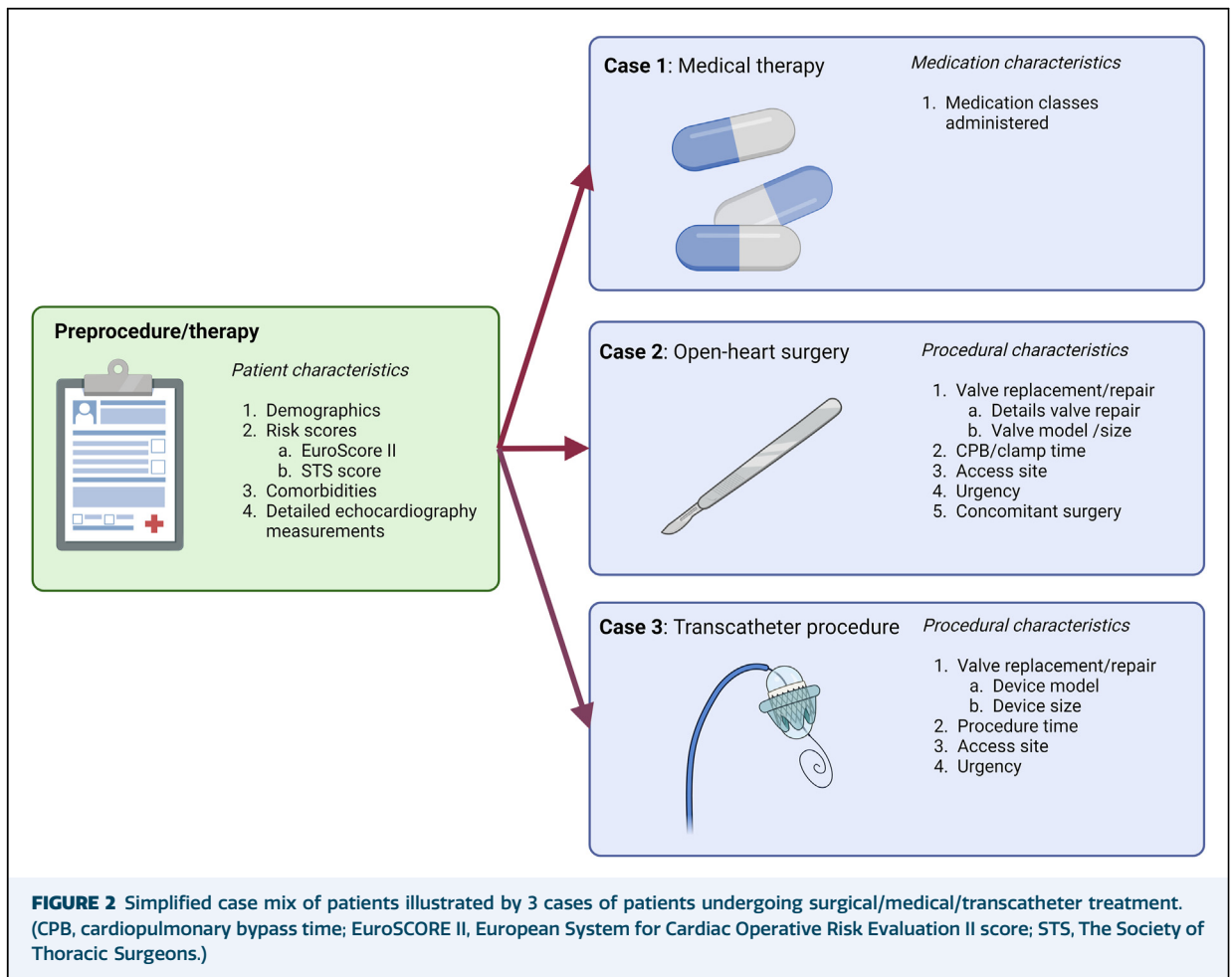
Domain	Outcomes/Subdivision	Definition/Questionnaire
Durability and complication of treatment	Endocarditis	Modified Duke criteria for endocarditis (see Supplemental Reference Guide for extensive criteria) ³⁰
	Valve thrombosis	Valve thrombosis is any thrombus not caused by infection attached to or near an operated valve that occludes part of the blood flow path, interferes with valve function, or is sufficiently large to warrant treatment
	Bleeding event	Type 1: Overt bleeding that requires medical intervention by a health care professional, leading to hospitalization, an increased level of care, or medical evaluation OR overt bleeding that requires a transfusion of 1 U whole blood/red blood cells Type 2: Overt bleeding that requires a transfusion of 2-4 U whole blood/red blood cells Type 3: Overt bleeding in a critical organ such as intracranial, intraspinal, intraocular, pericardial (associated with hemodynamic compromise/ tamponade and necessitating intervention), or intramuscular with compartment syndrome AND/OR overt bleeding causing hypovolemic shock or severe hypotension (systolic blood pressure <90 mm Hg lasting >30 min and not responding to volume resuscitation) or requiring vasopressors or surgery. Overt bleeding requiring a transfusion of 5 U whole blood/red blood cells. Type 4: Overt bleeding leading to death. Should be classified as probable (clinical suspicion) or definite (confirmed by autopsy or imaging). In this case, valve-related mortality should also be documented.
	Stroke and thromboembolic event	
	1. Stroke (ischemic or hemorrhagic)	1. Acute episode of a focal or global neurological deficit with at least 1 of the following: change in the level of consciousness, hemiplegia, hemiparesis, numbness, or sensory loss affecting 1 side of the body; dysphasia or aphasia; hemianopia; amaurosis fugax; or other neurological signs or symptoms consistent with stroke Stroke: duration of a focal or global neurological deficit ≥24 h OR <24 h if available neuroimaging documents a new hemorrhage or infarct O the neurological deficit results in death. Classified as ischemic and hemorrhagic (see Supplemental Reference Guide for extensive definition) Transient ischemic attack: Transient focal neurological signs or symptoms lasting <24 h presumed to be due to focal brain, spinal cord, or retinal ischemia, but without evidence of acute infarction by neuroimaging or pathology, or with no imaging performed
	2. Noncerebral thromboembolism	2. A noncerebral embolic event is an embolus documented operatively, at autopsy, or clinically that produces signs or symptoms attributable to complete or partial obstruction of a noncerebral artery
	Procedural complication	
	1. Conversion to open heart surgery	1. Need for conversion to open heart surgery during percutaneous/minimally invasive valve interventions
	2. Reoperation for bleeding	2. In case of surgical intervention, return to the operating room for rethoracotomy/sternotomy; in case of percutaneous intervention, unplanned intervention for the purpose of controlling the bleeding
	3. Periprocedural myocardial infarction	3. Type 5 MI according the Fourth Universal Definition of Myocardial infarction (see Supplemental Reference Guide for extensive criteria) ²⁴
4. New permanent pacemaker	4. Implantation of a new permanent pacemaker; not including pacemaker exchange of previously implanted pacemaker.	
5. Major/minor vascular complications	5. Any complication related to the device insertion, delivery, and complete removal of all its components (delivery catheter, sheath, guide wire), excluding the actual implantation in the heart. Categorized as major and minor according to the VARC-3 criteria (see Supplemental Reference Guide for extensive criteria). ¹⁰	
6. Low-cardiac output syndrome	6. Need for mechanical circulatory support with IABP, LVAD, or extracorporeal membrane oxygenation during surgery or within 5 postoperative days, and/or hemodynamic instability requiring continued pharmacological support with ≥2 inotropic medications (epinephrine, milrinone, dobutamine, dopamine) on postoperative day 1 ³¹	
Reoperation (valve related)	A valve reintervention after a previous valve intervention recorded in the dataset	
Postintervention valve dysfunction		
1. Structural valve deterioration	1. The term structural valve deterioration refers to changes intrinsic to the valve such as wear, fracture, poppet escape, calcification, leaflet tear, stent creep, and suture line disruption of components of a prosthetic valve; it also refers to new chordal rupture, leaflet disruption, or leaflet retraction of a repaired valve.	
2. Nonstructural valve dysfunction (including paravalvular insufficiency and device migration)	2. The term nonstructural dysfunction refers to problems (exclusive of thrombosis and infection) that do not directly involve valve components yet result in dysfunction of an operated valve, as diagnosed by reoperation, autopsy, or clinical investigation. Examples of nonstructural dysfunction	

(Continued)

TABLE 3 Continued		
Domain	Outcomes/Subdivision	Definition/Questionnaire
		include the following: entrapment by pannus, tissue, or suture paravalvular leak valvular leak; inappropriate sizing or positioning; residual leak or obstruction after valve implantation or repair; and clinically important intravascular hemolytic anemia. In addition, nonstructural dysfunction includes development of aortic or pulmonic regurgitation as a result of technical errors, dilatation of the sinotubular junction, or dilatation of the valve annulus after either valve replacement with stentless prostheses (eg, pulmonary autograft, aortic allograft, and xenograft valves) or aortic valve-sparing operations if the cusps are seen to be normal at reoperation, autopsy, or clinical investigation. For percutaneous and transapical approaches to aortic valve replacement or conventional open aortic valve replacement, new onset of coronary ischemia from coronary ostial obstruction or paravalvular aortic regurgitation is considered nonstructural dysfunction.
Definitions of valve regurgitation were discussed separately by a focus group of experts and validated by the Heart Valve Disease working group (Tables 4-6). Historical evaluation of regurgitation is classified in 3 grades (mild, moderate, and severe); different grading schemes are used in current research. Therefore, the Heart Valve Disease Working Group opted to move toward a uniform up-to-date evaluation of regurgitation in 4 grades (1-4) for aortic and mitral valve regurgitation. IABP, intra-aortic balloon pump; LVAD, left ventricular assist device; MI, myocardial infarction; VARC, Valve Academic Research Consortium.		

database. Ideally, the index event is when the patient is diagnosed with HVD, so disease progression and its impact on patients' lives can be monitored before a procedure, if any. Tracking clinic-reported outcome measures at 6 months within the first year and annually thereafter and

PROMs annually is recommended (Figure 3). In cases of an undiagnosed HVD, patients' data, including case mix, clinic-reported outcome measures, and PROMs, can be collected at the time of and after the valve procedure (Figure 3). After the procedure, the recommendation is to



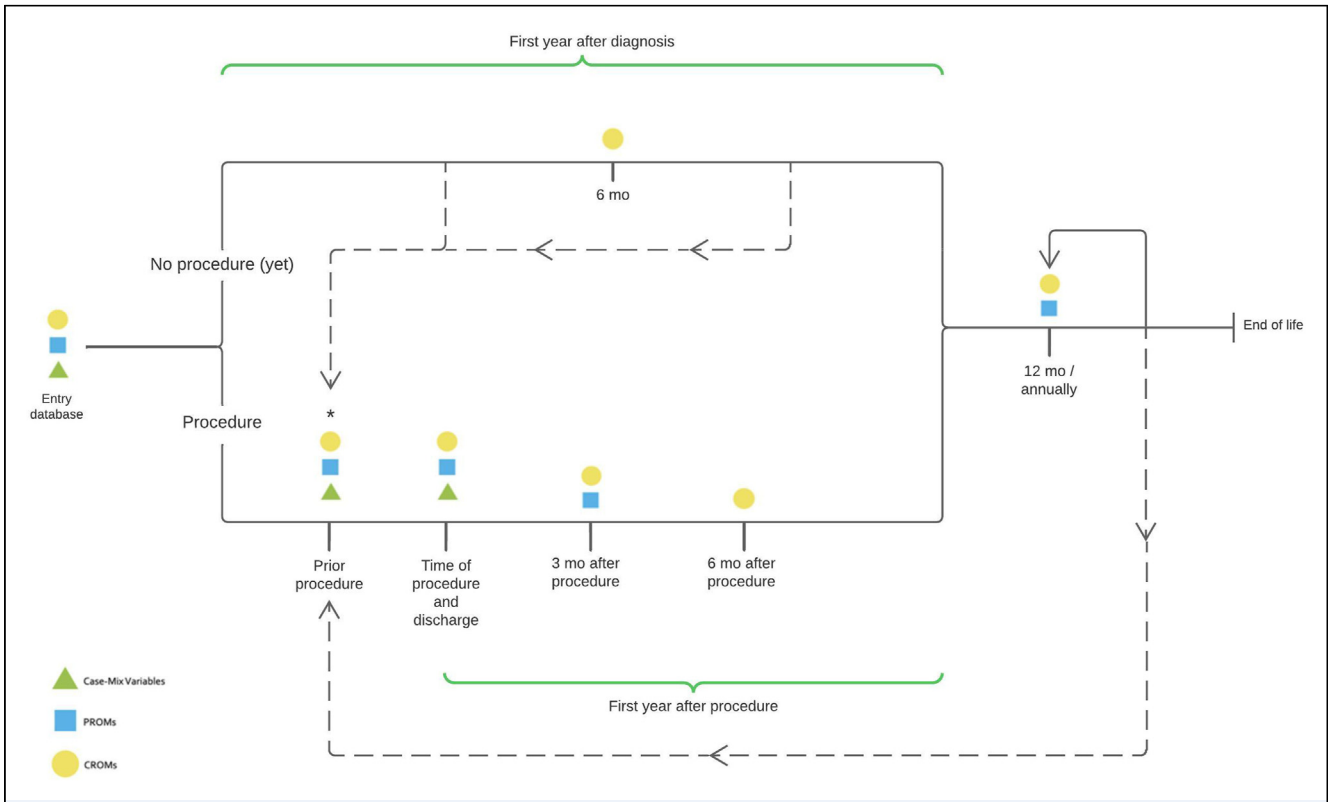


FIGURE 3 Proposed timelines of collecting outcome measures and case mix. *If <3 months elapsed between database entry and the procedure, the patient-reported outcome measures (PROMs) do not have to be captured. (CROM, clinic-reported outcome measure.)

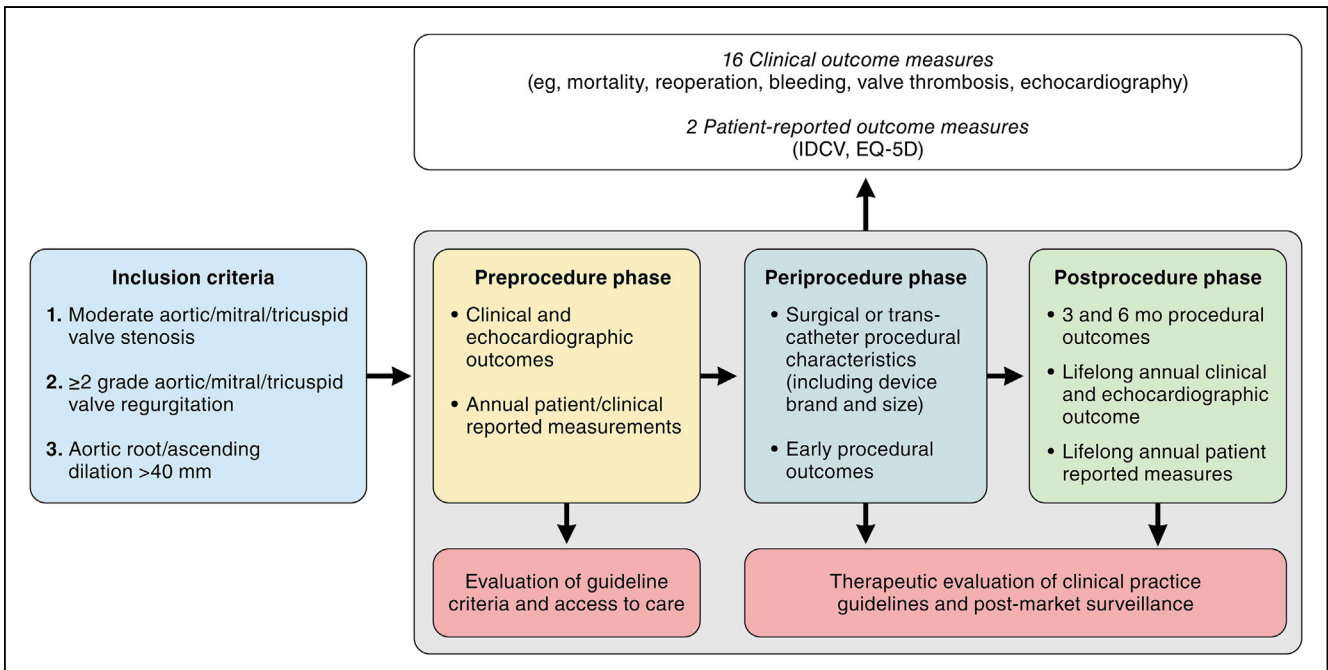


FIGURE 4 Heart valve disease International Consortium for Health Outcomes Measurement standard set allowing outcome measurement in preprocedural, periprocedural, and postprocedural phases of patients' lives. (IDCV, Heart Valve Disease Impact on Daily Life Questionnaire.)

TABLE 4 Grading the Severity of Aortic Valve Regurgitation

AR Severity Classes	Grade 1 (Mild)	Grade 2 (Moderate)	Grade 3 (Moderate to Severe)	Grade 4 (Severe)
Structural parameters				
○ Aortic valve morphology	Normal/abnormal	Normal/abnormal	Abnormal/prolapse/moderate coaptation defect	Abnormal/flail/large coaptation defect
○ LV size ^a	Usually normal	Normal or dilated	Usually dilated	Usually dilated
Qualitative Doppler parameters				
Color-flow AR jet width^b				
	Small in central jets	Intermediate	Large in central jet, variable in eccentric jets	Large in central jet, variable in eccentric jets
○ Color-flow convergence	None or very small	Intermediate	Intermediate	Large
○ CW signal of AR jet	Incomplete/faint	Dense	Dense	Dense
○ Diastolic flow reversal in descending aorta ^c	Brief, protodiastolic flow reversal	Intermediate	Holodiastolic flow reversal (end-diastolic velocity 10-20 cm/s)	Holodiastolic flow reversal (end-diastolic velocity ≥ 20 cm/s)
○ Diastolic flow reversal in abdominal aorta	Absent	Absent	Present	Present
Semiquantitative Doppler parameters				
• VC width, mm	<3	3-6	3-6	>6
• Jet width/LVOT diameter, %	<25	25-45	46-64	≥65
○ Jet CSA/LVOT CSA, %	<5	5-20	21-59	≥60
○ Pressure half-time, ms ^{c,d}	>500	Intermediate, 500-200	Intermediate, 500-200	<200
Quantitative Doppler parameters				
• EROA, mm ²	<10	10-19	20-29	≥30
• R Vol, mL	<30	30-44	45-59	≥60
• RF, %	<30	30-39	40-49	≥50
Quantitative cardiac magnetic resonance				
• RF, %	<30	30-39	40-49	≥50
<p>^aUnless there are other reasons, the LV size is usually normal in patients with mild AR. In acute severe AR, the LV size is often normal. Accepted cutoff values for nonsignificant LV enlargement are as follows: LV end-diastolic diameter <56 mm, LV end-diastolic volume <82 mL/m², LV end-systolic diameter <40 mm, and LV end-systolic volume <30 mL/m²; ^bAt a Nyquist limit of 50 to 60 cm/s; ^cThese parameters are influenced by LV and aortic compliance. Hence, low transvalvular end-diastolic aorta to LV pressure gradient due to concomitant moderate/severe LV diastolic dysfunction may lead to false-positive results. The high dependency of aortic flow reversal on aortic compliance considerably limits the utility of this parameter in the elderly population. These parameters are also influenced by chronotropy; ^dPressure half-time is shortened with increasing LV diastolic pressure and vasodilator therapy and in patients with a dilated compliant aorta or lengthened chronic AR. • Parameters that are more robust and should be given more weight to grade regurgitation severity by Doppler echocardiography. ○ Parameters that are less often applicable due to pitfalls in the feasibility/accuracy of the measurements or to the interaction with other factors. AR, aortic regurgitation; CSA, cross-sectional area; CW, continuous wave; EROA, effective regurgitant orifice area; LV, left ventricular; LVOT, left ventricular outflow tract; R Vol, regurgitant volume; RF, regurgitant fraction; VC, vena contracta.</p>				

track clinic-reported outcome measures at 3, 6, and 12 months and annually thereafter. The PROMs are tracked at 3 months after procedure and annually thereafter (Figure 3).

DISCUSSION

The ICHOM multisociety HVD working group reached consensus on a standardized set of outcomes, treatment, and adjustment variables to be tracked worldwide in patients with HVD. The proposed Set includes 16 (clinical) outcome measures, including 2 PROMs and 171 case-mix variables (Figure 4). To move from current device-/procedure-/treatment-centered evaluation to patient-centered and disease-related outcomes, the Set was designed to be flexible and able to follow the whole journey of patients with HVD through the health care system, regardless of

whether the treatment strategy is surgical or transcatheter. It was our aim to develop a Set that facilitates global standardization of outcomes in patients with HVD. This will allow comparison of the burden, management, and outcomes of HVD care across international borders, thereby contributing to improved patient selection, risk-adjustment models, and eventually higher quality of care for patients with HVD worldwide. The development of this Set was a multisociety and international effort including 12 societies and 12 nations on 4 continents. For the first time, all major surgical and cardiological societies, particularly those responsible for current clinical practice guidelines for the diagnosis and treatment of HVD, worked together to develop the first standardized Set for HVD that may be used as a complementary evaluation tool of future clinical practice guidelines. The HVD working group

TABLE 5 Grading the Severity of Mitral Regurgitation

MR Severity Classes	None/Trace	Grade 1 (Mild)	Grade 2 (Moderate)	Grade 3 (Moderate to Severe)	Grade 4 (Severe)
Structural parameters					
○ Mitral valve morphology ^a	Usually normal	No or mild leaflet abnormality or minimal tenting ^b	Moderate leaflet abnormality or moderate tenting	Moderate leaflet abnormality or moderate tenting	Severe valve lesions or severe tenting/lack of leaflet coaptation ^b
○ LV and LA size ^c	Normal	Normal/mildly dilated	Normal/mildly dilated	Mildly/moderately dilated	Moderately/severely dilated
○ RV size and function ^c	Normal	Normal	Normal/mildly dilated	Mildly/moderately dilated	Moderately/severely dilated
○ Estimation of pulmonary artery pressure	Normal	Normal	Variable	Increased	Increased (TR velocity >3 m/s, SPAP ≥50 mm Hg at rest and ≥60 mm Hg with exercise)
Qualitative Doppler parameters					
○ Jet features (size, area, and duration; color Doppler, Nyquist 50-70 cm/s)	Very small jet (<10% of LA area)	Small, central, narrow, often brief jet (usually <4 cm ² or <20% of LA area)	Variable (usually 4-6 cm ² or 20%-30% of LA area)	Variable (usually 6-8 cm ² or 30%-40% of LA area)	Large central jet (usually >8 cm ² or >40% of LA area) or eccentric wall-impinging jet of variable size
● Flow convergence size ^d (color Doppler, Nyquist 25-40 cm/s)	Not visible	Not visible, transient, or small ^b	Intermediate in size and duration	Intermediate in size and duration	Large throughout systole ^b (PISA radius >9 mm)
○ Jet density and contour (CW Doppler) ^e	Incomplete or faint, parabolic	Incomplete or faint, parabolic	Dense, partial, or parabolic	Dense, parabolic, or triangular	Dense, triangular ^b
○ Mitral inflow pattern ^f (PW Doppler)	A-wave dominant	A-wave dominant	Variable	E-wave dominant (peak E >1.2 m/s)	E-wave dominant (peak E >1.5 m/s)
○ Pulmonary vein flow ^f (PW Doppler)	Systolic dominance	Systolic dominance	Normal or systolic blunting	Systolic blunting	Minimal to no systolic flow/ systolic flow reversal ^b
Semiquantitative Doppler parameters					
● VC width (color Doppler, Nyquist 50-70 cm/s), mm	Not quantifiable	<3	3-<5	5-<7	≥7 (>8 for biplane)
● VC area by 3D planimetry (color Doppler, Nyquist 50-70 cm/s), mm ²	Not quantifiable	<20	20-<30	30-<40	≥40
Quantitative Doppler parameters					
● Effective regurgitant orifice area ^{g,h} (color Doppler, Nyquist 25-40 cm/s), mm ²	Not quantifiable	<20	20-<30	30-<40	≥40
● Regurgitant volume, mL ^g	Not quantifiable	<30	30-<45	45-<60	≥60
● Regurgitant fraction, % ^g	Not quantifiable	<3	30-<40	40-<50	≥50
Quantitative cardiac magnetic resonance					
● Regurgitant fraction, % ^g	Not quantifiable	<30	30-<40	40-<50	≥50

^aPrimary MR: leaflet abnormalities include leaflet thickening, calcification, prolapse, flail, retraction, and perforation; secondary MR: mitral valve tenting, leaflet tethering, and lack of leaflet coaptation; ^bConsidered to be specific for their MR grade; ^cDilation of LV, LA, and RV may not be present despite moderate/severe MR in cases of acute MR. These structural parameters and criteria pertain mostly to patients with primary MR. Patients with secondary MR often have dilated LV regardless of the severity of MR; ^dFlow convergence is usually considered small with a PISA radius ≤3 mm and large with a radius ≥10 mm at a Nyquist limit of 25 to 40 cm/s; ^eCare must be taken to avoid overgaining or incomplete spectral traces (ie, when the jet moves in and out of the Doppler beam); ^fMitral inflow pattern and pulmonary vein flow reversal may be influenced by LV systolic and diastolic function, LA size and pressure, atrial arrhythmias, and the presence of mitral inflow obstruction. However, holosystolic flow reversal is specific for severe MR; ^gThe regurgitant fraction is calculated by dividing the regurgitant volume by the total LV stroke volume measured by 3D echocardiography (total stroke volume = LV end-diastolic volume - LV end-systolic volume) or by Doppler (total stroke volume = regurgitant volume + LV forward stroke volume measured in LV outflow tract by pulsed-wave Doppler). A moderate regurgitant volume or effective regurgitant orifice area may correspond to a large regurgitant fraction and thus to a moderate to severe or severe MR in patients with depressed LV systolic function and low forward stroke volume (such as is often the case in patients with secondary MR). Hence, more weight should be given to the regurgitant fraction rather than other parameters to grade MR severity; ^hBy PISA or volumetric method. ● Parameters that are more robust and should be given more weight to grade regurgitation severity by Doppler echocardiography. ○ Parameters that are less often applicable due to pitfalls in the feasibility/accuracy of the measurements or to the interaction with other factors. 3D, 3-dimensional; CW, continuous wave; LA, left atrial; LV, left ventricular; MR, mitral regurgitation; PISA, proximal isovelocity surface area; PW, pulsed wave; RV, right ventricular; outflow tract; SPAP, systolic pulmonary arterial pressure; TR, tricuspid regurgitation; VC, vena contracta.

TABLE 6 Grading Tricuspid Valve Regurgitation

TR Severity Classes	Mild	Moderate	Severe
Structural parameters RA/RV/IVC dimensions + RA/RV/IVC dimension ^{a,b}	Usually normal	Normal or mild to moderate dilation	Usually dilated
Tricuspid valve morphology	Normal/abnormal	Normal/abnormal	Abnormal/flail ^b /large coaptation defect ^b /severe tenting ^b
Qualitative Doppler parameters			
Color-flow TR jet ^c	Small, central	Intermediate	Very large central jet ^b or eccentric wall impinging jet
Flow convergence zone	Not visible, transient or small	Intermediate in size and duration	Large throughout systole ^b
CW signal of TR jet	Faint/parabolic	Dense/parabolic	Dense/triangular with early peaking ^b (peak <2 m/s in massive TR)
Semiquantitative Doppler parameters			
VC width, mm ^c	<3	3-6.9	≥7 ^b
PISA radius, mm ^d	≤5	6-9	>9 ^b
Hepatic vein flow ^e	Systolic dominance	Systolic blunting	Systolic flow reversal ^b
Tricuspid inflow	A-wave dominant	Variable	E-wave dominant (≥1 m/s) ^f
Quantitative Doppler parameters			
EROA, mm ²	<20	20-39	≥40
R Vol, mL	<30	30-44	≥45

^aUnless there are other reasons, the RA and RV sizes and IVC are usually normal in patients with mild TR. An end-systolic RV eccentricity index >2 is in favor of severe TR. In acute severe TR, the RV size is often normal. In chronic severe TR, the RV is classically dilated. Accepted cutoff values for nonsignificant right-sided chambers enlargement (measurements obtained from the apical 4-chamber view) are as follows: mid RV dimension ≤33 mm, RV end-diastolic area ≤28 cm², RV end-systolic area ≤16 cm², RV fractional area change >32%, and maximal 2-dimensional RA volume ≤33 mL/m².
^bSpecific signs for severe TR: ^cAt a Nyquist limit of 50 to 60 cm/s; ^dBaseline Nyquist limit shift of 28 cm/s; ^eUnless there are other reasons for systolic blunting (atrial fibrillation, elevated RA pressure); ^fIn the absence of other causes of elevated RA pressure. An IVC diameter <2.1 cm is considered normal. The IVC is dilated when the diameter is >2.5 cm. CW, continuous-wave; EROA, effective regurgitant orifice area; IVC, inferior vena cava; PISA, proximal isovelocity surface area; R Vol, regurgitant volume; RA, right atrial; RV, right ventricular; TR, tricuspid regurgitation; VC, vena contracta.

included not only experts in the field of heart disease but also patient representatives. Patients' opinions and viewpoints have been invaluable for the development of this Set and allowed the focus to be on both clinical outcomes and outcomes that matter most to patients.

This set was built on prior work and previous efforts; both well-designed registries and clinical practice guidelines for reporting outcomes after valve interventions formed the basis of this Set.^{8-10,17,18,21-23} Overall, this Set combines all previous efforts, including the latest patient-centered definitions, and moves beyond short-term outcomes after valve intervention.^{18,22} Furthermore, this Set relies heavily on PROMs. Whereas several PROMs have been used previously, the HVD working group selected the EQ-5D-5L for quality of life and mental state. In contrast to VARC-3 guidelines for reporting after valve interventions, the HVD working group selected the Heart Valve Disease Impact on Daily Life Questionnaire instead of the recommended Minnesota Living With Heart Failure Questionnaire or the Kansas City Cardiomyopathy Questionnaire.⁸ This decision was also based on patients' viewpoints; the Heart

Valve Disease Impact on Daily Life Questionnaire allows patients to indicate whether a specific consequence of disease applies to them and whether they are bothered by this consequence. However, the Heart Valve Disease Impact on Daily Life Questionnaire does not have specific cutoff points to indicate good or bad outcomes, and analyzing the continuous data outcomes is recommended. Outcome data that are not discrete end points but rather "snapshots in time" such as valve dysfunction, PROMs, and symptoms are followed up longitudinally in this Set, allowing comprehensive models of repeated measures, making inference of imbalanced data possible.³⁷

The aortic valve and aortic root/ascending aorta are closely intertwined, both surgically and anatomically. Thus, a significant number of patients will undergo aortic valve surgery with less than grade II regurgitation. To capture preoperative information in these patients, they can be included with root dilatation >40 mm, and in a post hoc adjustment, 1 case-mix variable was added to the set, and 2 case-mix variables for aortic dimensions were allowed to be measured repeatedly. However, the HVD working group

acknowledges that the literature searches were not focused on identifying aneurysm-specific clinical outcome measures or PROMs. This adjustment should be viewed as a preliminary step toward the creation of a dedicated (aortic) aneurysm set, which is greatly needed.

Because the Set is endorsed by major societies, next steps include implementation of the Set in HVD clinical practice guidelines and societal databases. The HVD working group recognizes that this is not a straightforward task, and many challenges lie ahead. These include (1) ensuring local, regional, or national agreement to use the Set; (2) linking with existing registries; (3) building a user-friendly interface to enter data; (4) building a patient-friendly platform (eg, application [app]) for PROMs collection; and (5) budgeting for the costs of numbers 3 and 5. As previous ICHOM set implementation efforts have shown,³⁸ it seems essential that leadership support is present and an adequate health information system for collecting the data is developed. Although our intention is to eventually obtain a global evaluation of outcomes of patients who have HVD, a stepwise strategy is applied by initiating a pilot study in a small number of hospitals and performing a gap analysis to investigate which data are already collected and what infrastructure is most appropriate for adequate data collection.

A true global evaluation of patients' outcomes measures will be possible only with deep commitment of health authorities, regulators, and payers, moving away from delegating the evaluation to industry like in the European Union Medical Device Regulation, with the inherent conflict of interest. Integration of ICHOM standards within the codification of health payment systems would allow exhaustive implementation, early warning for defective devices, and the necessary independent evaluation tools of patient's outcomes measures. To date, ICHOM is collaborating with >650 organizations, including hospitals, universities, private insurance companies, and public payers (eg, National Health Service). On a larger political scale, the Organisation for Economic Co-operation and Development and ICHOM signed a Letter of Intent in January 2017 to collaborate on the collection, analysis, and publishing of PROMs for international comparison (Patients-Reported Indications Surveys program).

CONCLUSIONS

Through a unique collaborative effort among patients and cardiology and cardiothoracic surgery

societies, including patient representatives, a standard Set for HVD was developed. This dataset focuses on outcome measurement regardless of treatment, moving from device- to patient-centered outcomes. Implementation of this Set will facilitate global standardization of outcome measurement and allow meaningful comparison among health care systems, evaluation of clinical practice guidelines, and eventual improvement of patient care worldwide for those who experience HVD.

The Supplemental Material can be viewed in the online version of this article [<https://doi.org/10.1016/j.atsr.2024.05.005>] on <http://www.annalsthoracicsurgery.org>.

The authors would like to thank Katie Pelton and Aurelie Alger from PRRI and Frederic Mattei from Medd Consultants for their support.

FUNDING SOURCES

Edwards Lifesciences and Adetec Coeur funded this project.

DISCLOSURES

Elena Aikawa has received research funding from the National Institutes of Health. S.A. has received meeting/travel support from the European Society of Cardiology; participated in Data Management and Analysis Group of the British Intervention Cardiovascular Society; and is a Leader of the Quality of Care group of the European Society of Cardiology. Aubrey Almeida has received payment/honoraria fees from Abbott Medical Pty Ltd and Corcym Pty Ltd. Husam Balkhy has received consulting fees for being a proctor for Intuitive Surgical; has received lecture honoraria from Medtronic and Edwards Lifesciences; has served on a data safety monitoring board for Edwards Lifesciences; and has served in leadership positions for ISMICS, SRS, STS, and ACS. Paula Blancarte Jaber, via ICHOM, received funding from Adetec Coeur and Edwards Lifesciences for this project. Zofia Das-Gupta, via ICHOM, received funding from Adetec Coeur and Edwards Lifesciences for this project. Erwan Donal has received research and advisory collaboration with GE Healthcare and Abbott Vascular. Evaldas Girduškas has received speaker honoraria (payments to the institution) from Edwards Lifesciences, Medela, and AstraZeneca. Rebecca T. Hahn has received honoraria for lectures from Boston Scientific, Edwards Lifesciences, and Philips Healthcare; and Institutional Consulting Contracts (no direct compensation) from Abbott, Anteris, Boston Scientific, and Novartis. Andria Joseph has been a senior project leader for the development of the standard set for heart valve disease, which entails development of study materials, leading the working group through the process, and quality assurance of all materials. Emmanuel Lansac has received a patent for extra aortic ring from Coroneo Inc; and has received royalties/licenses for a patent extra aortic ring from Coroneo Inc. Bart Meuris has received consulting fees from Corcym, Edwards Lifesciences, and Novostia; and has received honoraria for lectures/presentations from Medtronic. Philippe Pibarot has received institutional funding with no direct compensation from Novartis, Edwards Lifesciences, Medtronic, Pi-Cardia, and Cardiac Success; has received honoraria for lectures/presentations from Edwards Lifesciences; and has participated on an advisory board for Medtronic. Ourania Preventza has been co-chair of ACC/AHA guidelines on aortic disease (2022); has served as a member of the EACTS/STS guidelines on aortic disease (2024); and has been a consultant (no fees) for W.L. Gore and Associates, Terumo Aortic, Intressa Vasc, and AbioMed. Vera H. Rigolin has participated on an advisory board for Rednvia Co, Ltd (Adaptive Phase 2/3 Multicenter, Double-Blind, Placebo-Controlled, Randomized, Parallel, 3 Arm Study to Evaluate the Efficacy and Safety of DA-1229 (Evogliptin) in Patient's Calcific Aortic Valve Disease with Mild to Moderate Aortic Stenosis [EVOID-AS]); has received stock from Amgen, Edwards Lifesciences, Intuitive Surgical, Inc, Bristol Myers Squibb, Merck-Schering Plough, Viatrix, Organon, Regeneron, and AstraZeneca. Frederick J. Schoen has received consulting fees as a paid consultant and SAB member for Xeltis; and has received support for meetings/travel as a paid consultant and

SAB member Xeltis. Pinak Shah has received support (payments to institution) from Edwards Lifesciences and support (InstitutionEd) from Medtronic; has received honoraria for lectures/presentations from Edwards; has served on a data safety monitoring board for Anteris; and has received stock/stock options from Xenter. Marta Sitges has received consulting fees from Edwards Lifesciences and Abbott; has received honoraria for lectures/presentations from Edwards Lifesciences, Abbott, Medtronic, General Electric, and Siemens Healthineers; has received payment for expert testimony from Abbott and General Electric; has received meeting/travel support from Abbott and Edwards Lifesciences; has served as past president of the Heart Valve Society; has been elected president of the Societat Catalana de Cardiologia; and has served with the Tricuspid Focus Group PCR. Molly Szerlip has received honoraria for

lectures/presentations from Edwards Lifesciences, CVI, SCAI, and Boston Scientific; has served on a data safety monitoring board for Abbott Vascular; and is a member of the Baylor Scott and White Heart Hospital Board, the SCAI Board of Trustees, and the IAGS Board. Wilson Y. Szeto has received honoraria for lectures/presentations from Edwards Lifesciences, Medtronic, Abbott, Terumo Aortic, and Artivion. Johanna J. M. Takkenberg is past president and senior advisor to Heart Valve Society Board. Vinod H. Thourani has received consulting fees from Abbott Vascular, Artivion, Boston Scientific, CroiValve, Edwards Lifesciences, Articure, and Egnite Medical; and has received equity from Dasi Simulations and Trisol. The remaining authors have reported that they have no relationships relevant to the contents of this paper to disclose.

REFERENCES

- Chen J, Li W, Xiang M. Burden of valvular heart disease, 1990–2017: results from the Global Burden of Disease Study 2017. *J Glob Health*. 2020;10:020404. <https://doi.org/10.7189/jogh.10.020404>
- Passos LSA, Nunes MCP, Aikawa E. Rheumatic heart valve disease pathophysiology and underlying mechanisms. *Front Cardiovasc Med*. 2020;7:612716. <https://doi.org/10.3389/fcvm.2020.612716>
- Moore M, Chen J, Mallow PJ, Rizzo JA. The direct health-care burden of valvular heart disease: evidence from US national survey data. *Clinicoecon Outcomes Res*. 2016;8:613–627. <https://doi.org/10.2147/CEOR.S112691>
- Vahanian A, Beyersdorf F, Praz F, et al; ESC/EACTS Scientific Document Group. 2021 ESC/EACTS guidelines for the management of valvular heart disease: developed by the Task Force for the management of valvular heart disease of the European Society of Cardiology (ESC) and the European Association for Cardio-Thoracic Surgery (EACTS). *Rev Esp Cardiol (Engl Ed)*. 2022;75:524. <https://doi.org/10.1016/j.rec.2022.05.006>
- Coffey S, Cairns BJ, Lung B. The modern epidemiology of heart valve disease. *Heart*. 2016;102:75–85. <https://doi.org/10.1136/heartjnl-2014-307020>
- Coffey S, Roberts-Thomson R, Brown A, et al. Global epidemiology of valvular heart disease. *Nat Rev Cardiol*. 2021;18:853–864. <https://doi.org/10.1038/s41569-021-00570-z>
- Otto CM, Nishimura RA, Bonow RO, et al. 2020 ACC/AHA guideline for the management of patients with valvular heart disease: a report of the American College of Cardiology/American Heart Association Joint Committee on Clinical Practice Guidelines. *J Thorac Cardiovasc Surg*. 2021;162:e183–e353. <https://doi.org/10.1016/j.jtcvs.2021.04.002>
- Leon MB, Piazza N, Nikolsky E, et al. Standardized endpoint definitions for transcatheter aortic valve implantation clinical trials: a consensus report from the Valve Academic Research Consortium. *Eur Heart J*. 2011;32:205–217. <https://doi.org/10.1093/eurheartj/ehq406>
- Kappetein AP, Head SJ, Genereux P, et al. Valve Academic Research Consortium–2. Updated standardized endpoint definitions for transcatheter aortic valve implantation: the Valve Academic Research Consortium–2 consensus document (VARC–2). *Eur J Cardiothorac Surg*. 2012;42:545–560. <https://doi.org/10.1093/ejcts/ezs533>
- Genereux P, Piazza N, Alu MC, et al; VARC–3 Writing Committee. Valve Academic Research Consortium 3: updated endpoint definitions for aortic valve clinical research. *J Am Coll Cardiol*. 2021;77:2717–2746. <https://doi.org/10.1016/j.jacc.2021.02.038>
- Myers PO, Dayan V, Szeto WY, et al. Joint Surgical Associations (EACTS, LACES, ASCVTS, AATS, and STS) position statement regarding the VARC–3 definitions for aortic valve clinical research. *Eur J Cardiothorac Surg*. 2022;62:ezac110. <https://doi.org/10.1093/ejcts/ezac110>
- Veen KM, Joseph A, Sossi F, et al. Standardized approach to extract candidate outcomes from literature for a standard outcome set: a case-and simulation study. *BMC Med Res Methodol*. 2023;23:261. <https://doi.org/10.1186/s12874-023-02052-x>
- Dalkey N. An experimental study of group opinion: the Delphi method. *Futures*. 1969;1:408–426. [https://doi.org/10.1016/s0016-3287\(69\)80025-x](https://doi.org/10.1016/s0016-3287(69)80025-x)
- Hummel K, Whittaker S, Sillett N, et al. Development of an international standard set of clinical and patient-reported outcomes for children and adults with congenital heart disease: a report from the International Consortium for Health Outcomes Measurement Congenital Heart Disease Working Group. *Eur Heart J Qual Care Clin Outcomes*. 2021;7:354–365. <https://doi.org/10.1093/ehjqcco/qcab009>
- Baumgartner HC, Hung JC-C, Bermejo J, et al. Recommendations on the echocardiographic assessment of aortic valve stenosis: a focused update from the European Association of Cardiovascular Imaging and the American Society of Echocardiography. *Eur Heart J Cardiovasc Imaging*. 2017;18:254–275. <https://doi.org/10.1093/ehjci/jew335>
- Baumgartner H, Hung J, Bermejo J, et al; American Society of Echocardiography. Echocardiographic assessment of valve stenosis: EAE/AASE recommendations for clinical practice. *J Am Soc Echocardiogr*. 2009;22:1–23; quiz 101. <https://doi.org/10.1016/j.echo.2008.11.029>. quiz1012.
- de Heer F, Kluijn J, Elkhoury G, et al; Aortic Valve Repair Research Network Investigators. AVIATOR: an open international registry to evaluate medical and surgical outcomes of aortic valve insufficiency and ascending aorta aneurysm. *J Thorac Cardiovasc Surg*. 2019;157:2202–2211.e7. <https://doi.org/10.1016/j.jtcvs.2018.10.076>
- Bowdish ME, D'Agostino RS, Thourani VH, et al. STS Adult Cardiac Surgery Database: 2021 update on outcomes, quality, and research. *Ann Thorac Surg*. 2021;111:1770–1780. <https://doi.org/10.1016/j.athoracsur.2021.03.043>
- Carroll JD, Mack MJ, Vemulapalli S, et al. STS-ACC TVT registry of transcatheter aortic valve replacement. *J Am Coll Cardiol*. 2020;76:2492–2516. <https://doi.org/10.1016/j.jacc.2020.09.595>
- Di Mario C, Eltchaninoff H, Moat N, et al; Transcatheter Valve Treatment Sentinel Registry (TCVT) Investigators of the EURObservational Research Programme (EORP) of the European Society of Cardiology. The 2011–12 pilot European sentinel registry of transcatheter aortic valve implantation: in-hospital results in 4,571 patients. *EuroIntervention*. 2013;8:1362–1371. <https://doi.org/10.4244/EIJV8I12A209>
- Beckmann A, Hamm C, Figulla HR, et al; GARY Executive Board. The German Aortic Valve Registry (GARY): a nationwide registry for patients undergoing invasive therapy for severe aortic valve stenosis. *Thorac Cardiovasc Surg*. 2012;60:319–325. <https://doi.org/10.1055/s-0032-1323155>
- Siregar S, Groenwold RH, Versteegh MI, et al. Data resource profile: adult cardiac surgery database of the Netherlands Association for Cardio-Thoracic Surgery. *Int J Epidemiol*. 2013;42:142–149. <https://doi.org/10.1093/ije/dys241>
- Akins CW, Miller DC, Turina MI, et al. Guidelines for reporting mortality and morbidity after cardiac valve interventions. *Eur J Cardiothorac Surg*. 2008;33:523–528. <https://doi.org/10.1016/j.ejcts.2007.12.055>
- Thygesen K, Alpert JS, Jaffe AS, et al; Executive Group on behalf of the Joint European Society of Cardiology (ESC)/American College of Cardiology (ACC)/American Heart Association (AHA)/World Heart Federation

- (WHF) Task Force for the Universal Definition of Myocardial Infarction. Fourth Universal Definition of Myocardial Infarction (2018). *J Am Coll Cardiol*. 2018;72:2231–2264. <https://doi.org/10.1016/j.jacc.2018.08.1038>
25. Court EL, Robinson JA, Hocken DB. Informed consent and patient understanding of blood transfusion. *Transfus Med*. 2011;21:183–189. <https://doi.org/10.1111/j.1365-3148.2011.01069.x>
26. Herdman M, Gudex C, Lloyd A, et al. Development and preliminary testing of the new five-level version of EQ-5D (EQ-5D-5L). *Qual Life Res*. 2011;20:1727–1736. <https://doi.org/10.1007/s11136-011-9903-x>
27. Padilha KM, Gallani MC, Colombo RC. Development of an instrument to measure beliefs and attitudes from heart valve disease patients. *Rev Lat Am Enfermagem*. 2004;12:453–459. <https://doi.org/10.1590/s0104-11692004000300002>
28. Dolgin M, ed. *Nomenclature and Criteria for Diagnosis of Diseases of the Heart and Great Vessels*. Little Brown & Co; 1994.
29. Campeau L. Letter: Grading of angina pectoris. *Circulation*. 1976;54:522–523.
30. Durack DT, Lukes AS, Bright DK. New criteria for diagnosis of infective endocarditis: utilization of specific echocardiographic findings: Duke Endocarditis Service. *Am J Med*. 1994;96:200–209. [https://doi.org/10.1016/0002-9343\(94\)90143-0](https://doi.org/10.1016/0002-9343(94)90143-0)
31. Duncan AE, Kartashov A, Robinson SB, et al. Risk factors, resource use, and cost of postoperative low cardiac output syndrome. *J Thorac Cardiovasc Surg*. 2022;163:1890–1898.e10. <https://doi.org/10.1016/j.jtcvs.2020.06.125>
32. Nowels D, McGloin J, Westfall JM, Holcomb S. Validation of the EQ-5D quality of life instrument in patients after myocardial infarction. *Qual Life Res*. 2005;14:95–105. <https://doi.org/10.1007/s11136-004-0614-4>
33. Anjos DB, Rodrigues RC, Padilha KM, Pedrosa RB, Gallani MC. Reliability and construct validity of the instrument to measure the impact of valve heart disease on the patient's daily life. *Rev Lat Am Enfermagem*. 2016;24:e2730. <https://doi.org/10.1590/1518-8345.0624.2730>
34. Padilha KM, Gallani MC, Colombo RC. Validity of an instrument to measure the impact of valve heart disease on the patient's daily life. *J Clin Nurs*. 2007;16:1285–1291. <https://doi.org/10.1111/j.1365-2702.2007.01765.x>
35. de Lima Lopes Rodrigues S, Rodrigues RC, Sao-Joao TM, Pavan RB, Padilha KM, Gallani MC. Impact of the disease: acceptability, ceiling and floor effects and reliability of an instrument on heart failure [in Portuguese] *Rev Esc Enferm USP*. 2013;47:1091–1098. <https://doi.org/10.1590/S0080-623420130000500012>
36. dos Santos RAB, Rodrigues RCM, Padilha KM, de Lima Lopes Rodrigues S, Spana TM, Gallani MC. Validation of an instrument to measure the impact of coronary disease on patient's daily life. *J Clin Nurs*. 2012;21:485–494. <https://doi.org/10.1111/j.1365-2702.2011.03930.x>
37. Hickey GL, Mokhes MM, Chambers DJ, Kolamunnage-Dona R. Statistical primer: performing repeated-measures analysis. *Interact Cardiovasc Thorac Surg*. 2018;26:539–544. <https://doi.org/10.1093/icvts/ivy009>
38. Benning L, Das-Gupta Z, Sousa Fialho L, Wissig S, Tapela N, Gaunt S. Balancing adaptability and standardisation: insights from 27 routinely implemented ICHOM standard sets. *BMC Health Serv Res*. 2022;22:1424. <https://doi.org/10.1186/s12913-022-08694-9>
-