

## **Pannus formation after transcatheter aortic valve implantation resulting in prosthetic valve dysfunction: a case report**

**Fabian Hundertmark, Anton Tomsic, Tamer Owais, Evaldas Girdauskas**

### **Angaben zur Veröffentlichung / Publication details:**

Hundertmark, Fabian, Anton Tomsic, Tamer Owais, and Evaldas Girdauskas. 2025. "Pannus formation after transcatheter aortic valve implantation resulting in prosthetic valve dysfunction: a case report." *European Heart Journal - Case Reports* 9 (9): ytaf440. <https://doi.org/10.1093/ehjcr/ytaf440>.

### **Nutzungsbedingungen / Terms of use:**

**CC BY 4.0**

Dieses Dokument wird unter folgenden Bedingungen zur Verfügung gestellt: / This document is made available under these conditions:


**CC-BY 4.0: Creative Commons: Namensnennung**

Weitere Informationen finden Sie unter: / For more information see:

<https://creativecommons.org/licenses/by/4.0/deed.de>



# Pannus formation after transcatheter aortic valve implantation resulting in prosthetic valve dysfunction: a case report

Fabian Hundertmark <sup>1\*</sup>, Anton Tomsic<sup>1</sup>, Tamer Owais<sup>2</sup>, and Evaldas Girdauskas<sup>1</sup>

<sup>1</sup>Department of Cardiothoracic Surgery, University Hospital Augsburg, Stenglinstraße 2, 86152 Augsburg, Germany; and <sup>2</sup>Department of Cardiothoracic Surgery, Helios-University-Wuppertal, Arrenberger Straße 20, 42117 Wuppertal, Germany

Received 27 February 2025; revised 18 June 2025; accepted 26 August 2025; online publish-ahead-of-print 23 September 2025

## Background

Subaortic pannus formation (SAP) is a recognized complication following surgical aortic valve replacement (SAVR), typically manifesting around 5 years post-implantation. However, SAP occurrence after transcatheter aortic valve implantation (TAVI) remains poorly documented and investigated.

## Case summary

This case report presents a 79-year-old male who presented to our clinic with fatigue on exertion after having undergone TAVI with a 26-mm Edwards SAPIEN 3 valve 3 years prior to presentation. Echocardiography revealed elevated transprosthetic gradients, with no improvement after initiation of anticoagulation therapy. On cardiac tomography imaging, SAP was suspected. The patient underwent successful reoperative SAVR with concomitant mitral and tricuspid valve repair. Intraoperatively, severe pannus formation with subvalvular obstruction of the valve opening area was observed.

## Discussion

This case highlights the risk of early SAP formation following TAVI, underscoring the need for long-term follow-up and a more thorough understanding of the underlying pathophysiology.

## Keywords

Subaortic pannus • Bioprosthetic valve dysfunction • Transcatheter aortic valve implantation • Sapien 3 aortic valve • Case report

## ESC curriculum

2.4 Cardiac computed tomography • 2.1 Imaging modalities • 4.10 Prosthetic valves • 7.4 Percutaneous cardiovascular post-procedure

## Learning points

- Subaortic pannus formation (SAP) is a known complication following surgical aortic valve replacement, leading to bioprosthetic valve dysfunction (BVD). However, SAP can also occur after transcatheter aortic valve implantation, highlighting the need for awareness in this patient population.
- Cardiac imaging plays a crucial role in the assessment of BVD, as it enables detailed characterization of the underlying pathological mechanisms and guides clinical decision-making.
- Further research is needed to better understand the pathophysiology, prevention, diagnostic strategies, and therapeutic options for SAP in both surgical and transcatheter valve interventions.

\* Corresponding author. Tel: +49(0)15120031172, Email: [fabian.hundertmark95@gmail.com](mailto:fabian.hundertmark95@gmail.com)

Handling Editor: Mohammad El Tahlawi

Peer-reviewers: Sebastian Feickert

Compliance Editor: Deepti Ranganathan

© The Author(s) 2025. Published by Oxford University Press on behalf of the European Society of Cardiology.

This is an Open Access article distributed under the terms of the Creative Commons Attribution License (<https://creativecommons.org/licenses/by/4.0/>), which permits unrestricted reuse, distribution, and reproduction in any medium, provided the original work is properly cited.

## Introduction

Subaortic pannus formation (SAP) after surgical aortic valve replacement (SAVR) most often occurs 5 years after implantation, resulting in prosthetic valve dysfunction (PVD).<sup>1</sup> The pathophysiologic mechanisms behind pannus formation are thought to involve the impact of turbulent transvalvular blood flow, a nonimmune inflammatory reaction against the prosthesis in the periannular neointima on the left ventricular septum, and increased shear stress.<sup>2</sup> SAP is most frequently documented following SAVR, while data and case reports on SAP occurrence post-transcatheter valve replacement [transcatheter aortic valve implantation (TAVI)] remain limited. Herein, we present a case of a 79-year-old man who developed PVD due to SAP 3 years following his initial TAVI.

## Summary figure

3 years before admission	- Transcatheter aortic valve implantation (TAVI) (Edwards Sapien 3, 26mm) for severe aortic stenosis
At admission	- Clinical deterioration (dyspnea, fatigue, peripheral edema) - Bioprosthetic valve Dysfunction (BVD) with elevated transprosthetic gradients - Initiation of anticoagulation therapy (phenprocoumon) suspecting valve leaflet thrombosis
3 months after admission	- No improvement of valve function under anticoagulation - Suspected subaortic pannus formation (SAP) in computed tomography - Surgery is planned
Surgery	- Severe SAP (novel finding after TAVI) as cause for BVD identified - Prosthesis explantation, aortic valve replacement, concomitant mitral and tricuspid valve repair
3 months after surgery	- Sufficient postoperative valve function - Improvement of clinical symptoms

## Case presentation

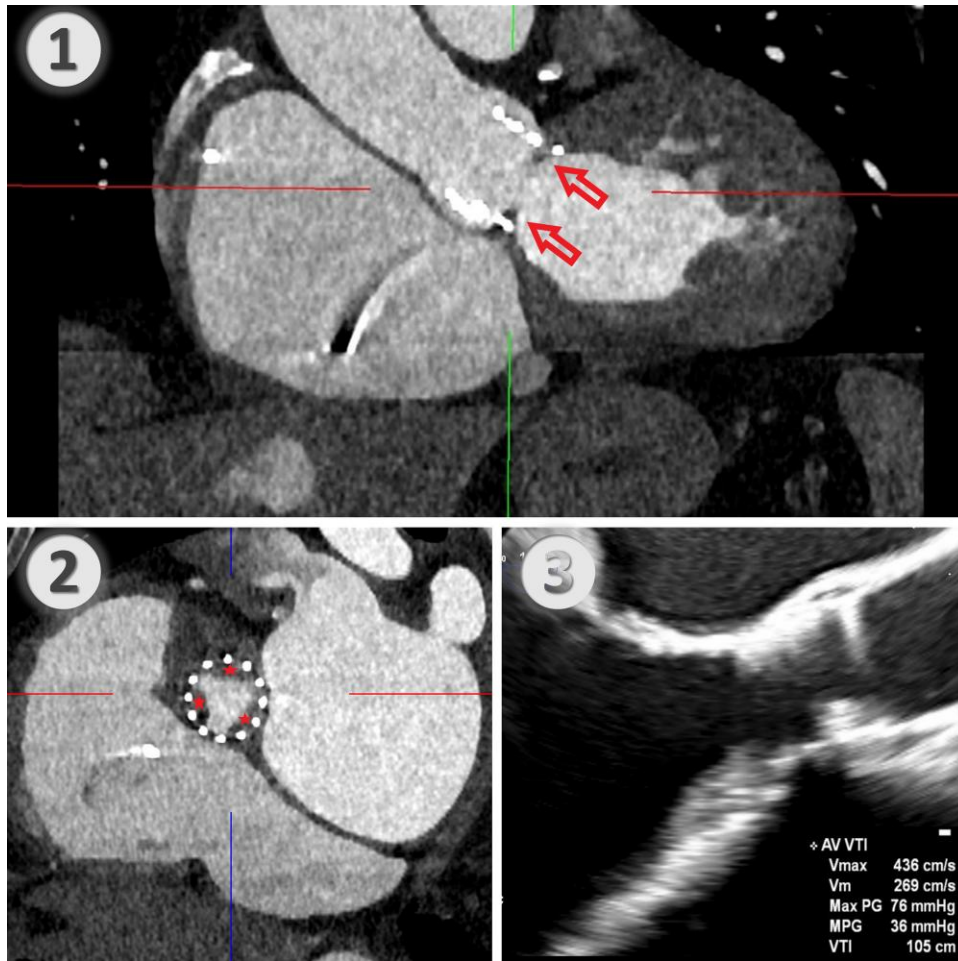
A 79-year-old man presented with progressive dyspnoea 3 years after undergoing transfemoral TAVI with a 26-mm Edwards SAPIEN 3 aortic valve (Edwards Lifesciences Corporation, Irvine, CA, USA) for severe aortic stenosis. Relevant comorbidities included chronic kidney failure, stable coronary artery disease, atrial fibrillation and permanent pacemaker implantation. Initially, a transprosthetic peak velocity of 1.9 m/s and a mean pressure gradient (PG) of 7 mmHg were documented. Three years after TAVI, echocardiography showed a transprosthetic peak velocity of 4.57 m/s and a mean PG of 44 mmHg as well as moderate mitral and tricuspid valve regurgitation. Laboratory testing showed elevated creatinine with 1.4 mg/dL and no other signs of organ dysfunction. Initial medical optimization included diuretics for cardiac recompensation and switching oral anticoagulation from apixaban to vitamin K antagonists for suspected prosthetic valve thrombosis. After 2 months, the patient failed to improve clinically, and echocardiography showed no improvement in aortic valve function. Computed tomography suggested SAP, showing a hypodense circular structure on the subannular inflow site of the aortic valve prosthesis (Figure 1). A SAVR through median sternotomy with concomitant mitral and tricuspid valve repair was scheduled. Intraoperatively, on the aortic side, the prosthesis appeared, largely unaltered with preserved leaflet mobility. On the ventricular side, however, extensive pannus formation was

observed, obliterating the valve opening area, particularly under the right and non-coronary leaflets (Figure 2). The prosthetic valve was explanted while preserving the integrity of the aortic wall and aortic valve annulus. Mitral valve repair was achieved using a 30-mm IMR annuloplasty ring (Edwards Lifesciences Corporation, Irvine, CA, USA). A sutureless Perceval bioprosthesis Size L (CorCym, London, UK) was implanted in the aortic position, and tricuspid valve repair was achieved using a 32-mm Cosgrove ring (Edwards Lifesciences Corporation, Irvine, CA, USA). Postoperative echocardiography showed good results, with a transprosthetic aortic valve peak velocity of 3.0 m/s, a mean PG of 19 mmHg, and no paravalvular leakage.

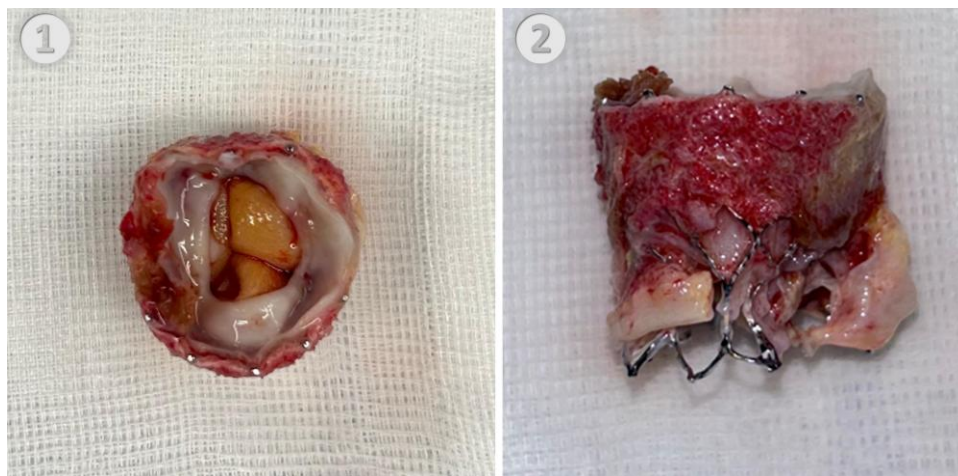
## Discussion

SAP is a rare complication following heart valve replacement, with reported incidences of 0.3%, 5.0%, and 9.9% at 10, 20, and 25 years post-

implantation.<sup>3</sup> Risk factors for pannus formation include younger patient age, smaller prosthetic valve size, and multiple valve replacement.<sup>3</sup> Diagnosing SAP is often challenging because transthoracic and transoesophageal echocardiography frequently indicate valvular dysfunction, such as aortic stenosis in our case, though often fail to elucidate the underlying pathomechanism when the valve leaflets are neither thickened nor calcified and retain adequate mobility. Differentiating pannus from thrombus is crucial, as thrombus formation may respond to anticoagulation, while pannus requires surgery. ESC/EACTS guidelines recommend cardiac CT for distinction, with pannus showing higher radiodensity [Hounsfield units (HU) > 145] compared to thrombus (HU > 90).<sup>4</sup> The exact pathomechanism of SAP remains unclear, though increased immunologic activity is thought to contribute to accelerated valve degeneration and pannus formation.<sup>5</sup> Other potential haemodynamic contributors include turbulent transvalvular flow and elevated wall shear stress, although these mechanisms have so far been described primarily in the context of surgically implanted prosthetic valves.<sup>2</sup> To our knowledge, only one case following TAVI with a self-expanding valve has been described to date.<sup>3</sup> No report of pannus formation after Edwards SAPIEN 3 aortic valve implantation is available in the literature. Compared to previous device generations, the latest generation of the SAPIEN 3 device includes a taller, textured polyethylene terephthalate outer skirt that successfully prevents paravalvular leakage post-implantation. This could lead to alterations in both



**Figure 1** (1) Sagittal view of the prosthetic valve in contrast enhanced computed tomography. Arrowheads: pannus formation beneath valve leaflets. (2) Short axis view of prosthetic valve with pannus formation at the level of prosthetic valve cusps. Asterisks: pannus beneath all three valve leaflets. (3) Transoesophageal echocardiography images of the prosthetic valve in long axis view with transprosthetic gradients.



**Figure 2** (1) Extracted bioprosthesis aortic valve (Edwards SAPIEN 3), with pannus formation on the ventricular inflow site. (2) Side view of the extracted bioprosthesis valve.

immune activity and haemodynamic parameters, as described. As no reports on pannus formation with older-generation devices are available, the described pannus formation could be related to the design changes in the recent valve prosthesis generation. Currently, no data support this hypothesis, and it therefore remains primarily speculative. Clinical and imaging surveillance of the latest generation TAVI prostheses and their modifications seems warranted to determine whether our case presented an isolated finding, a more common occurrence, or even a clinically significant issue.

## Conclusion

While TAVI remains a viable option, particularly for high-risk surgical candidates, complications such as SAP may impact the long-term durability of transcatheter valves. Close monitoring of new valve devices seems warranted to better understand the clinical and echocardiographic prognosis associated with each specific model and its modifications.

## Lead author biography



Fabian Hundertmark, MD, is a cardiac surgery resident in Augsburg, Germany, with a keen interest in advanced valvular interventions, structural heart disease, and aortic pathology. His research focuses on prosthetic valve dysfunction, as well as imaging techniques for structural and vascular diseases. Mr Hundertmark is committed to combining innovative surgical and diagnostic strategies with evidence-based medicine to enhance patient outcomes.

*Conflict of interest.* None declared.

## Funding

The authors declare that no funding, grants, or financial support were received for the research, authorship, or publication of this manuscript.

## Ethics approval

This case report was conducted in accordance with the ethical standards of the Declaration of Helsinki. Written informed consent was obtained from the patient for the publication of this report and any accompanying images. The patient was informed about the purpose, content, and potential implications of this publication, and consent was given voluntarily. All identifying information has been anonymized to protect the privacy of the patient.

## Data availability

Data sharing is not applicable to this article as all data relevant to the reported case have been presented in the article.

## Author contributions

Fabian Hundertmark (Conceptualization, Writing—original draft, Writing—review & editing, Visualization, Investigation), Anton Tomsic (Conceptualization, Writing—review and editing, Methodology), Tamer Owais (Resources), Evaldas Girdauskas (Conceptualization, Investigation, Resources, Supervision)

## References

1. Senapati A, Faza N, Mahmarian J, Chang SM. Cardiac computed tomography for structural heart disease assessment and therapeutic planning: focus on prosthetic valve dysfunction. *Methodist Debakey Cardiovasc J* 2020;**16**:86–96.
2. Teshima H, Hayashida N, Yano H, Nishimi M, Tayama E, Fukunaga S, et al. Obstruction of St Jude Medical valves in the aortic position: histology and immunohistochemistry of pannus. *J Thorac Cardiovasc Surg* 2003;**126**:401–407.
3. Choi JW, Hwang HY, Lee Y, Sohn SH, Kim Kh, Kim KB, et al. Incidence and risk factors of pannus after mechanical aortic valve replacement. *Thorac Cardiovasc Surg* 2022;**70**:182–188.
4. Vahanian A, Beyersdorf F, Praz F, Milojevic M, Baldus S, Bauersachs J, et al. 2021 ESC/EACTS Guidelines for the management of valvular heart disease: developed by the task force for the management of valvular heart disease of the European Society of Cardiology (ESC) and the European Association for Cardio-Thoracic Surgery (EACTS). *Rev Esp Cardiol (Engl Ed)* 2022;**75**:524.
5. Li YJ, Pan X, Ma L, He B. Pannus formation and iatrogenic ventricular septal defect after transcatheter aortic valve implantation. *Eur Heart J Case Rep* 2022;**6**:ytac265.