

RESEARCH ARTICLE

Open Access



Serum insulin-like growth factor-1 and its binding protein-7: potential novel biomarkers for heart failure with preserved ejection fraction

Michael Coll Barroso^{1†}, Frank Kramer^{2†}, Stephen J. Greene³, Daniel Scheyer⁴, Till Köhler⁴, Martin Karoff¹, Melchior Seyfarth⁴, Mihai Gheorghiade⁵ and Wilfried Dinh^{2,4*}

Abstract

Background: Insulin-like growth factor binding protein-7 (IGFBP-7) modulates the biological activities of insulin-like growth factor-1 (IGF-1). Previous studies demonstrated the prognostic value of IGFBP-7 and IGF-1 among patients with systolic heart failure (HF). This study aimed to evaluate the IGF1/IGFBP-7 axis in HF patients with preserved ejection fraction (HFpEF).

Methods: Serum IGF-1 and IGFBP-7 levels were measured in 300 eligible consecutive patients who underwent comprehensive cardiac assessment. Patients were categorized into 3 groups including controls with normal diastolic function ($n = 55$), asymptomatic left ventricular diastolic dysfunction (LVDD, $n = 168$) and HFpEF ($n = 77$).

Results: IGFBP-7 serum levels showed a significant graded increase from controls to LVDD to HFpEF (median 50.30 [43.1-55.3] vs. 54.40 [48.15-63.40] vs. 61.9 [51.6-69.7], respectively, $P < 0.001$), whereas IGF-1 levels showed a graded decline from controls to LVDD to HFpEF (120.0 [100.8-144.0] vs. 112.3 [88.8-137.1] vs. 99.5 [72.2-124.4], $p < 0.001$). The IGFBP-7/IGF-1 ratio increased from controls to LVDD to HFpEF (0.43 [0.33-0.56] vs. 0.48 [0.38-0.66] vs. 0.68 [0.55-0.88], $p < 0.001$). Patients with IGFBP-7/IGF-1 ratios above the median demonstrated significantly higher left atrial volume index, E/E' ratio, and NT-proBNP levels (all $P \leq 0.02$).

Conclusion: In conclusion, this hypothesis-generating pilot study suggests the IGFBP-7/IGF-1 axis correlates with diastolic function and may serve as a novel biomarker in patients with HFpEF. A rise in IGFBP-7 or the IGFBP-7/IGF-1 ratio may reflect worsening diastolic function, adverse cardiac remodeling, and metabolic derangement.

Keywords: Heart failure, Preserved, IGF-1, IGFBP-7

Background

Although advances in drug and device-based therapies have substantially improved survival for patients with chronic heart failure (HF) with reduced ejection fraction (HFrEF), there has been no such parallel progress with therapy for HF with preserved ejection fraction (HFpEF) [1]. The underlying reasons for the failure to

identify effective treatments are incompletely understood, but major challenges relate to accurate diagnosis and the heterogeneity of the broad HFpEF patient population [2]. In this context, new and emerging biomarkers may be helpful to better define distinct pathophysiology and guide targeted therapeutic strategies. The growth hormone/insulin-like growth factor-1 (GH/IGF-1) system is essential in the regulation of growth and cellular differentiation in various tissues, with IGF-1 as the primary mediator. IGF-binding protein 7 (IGFB-7) binds to IGF-1 and neutralizes its activity, thus the IGFBP-7/IGF-1 ratio may serve as a proxy for GH system activity [3, 4]. Among HFrEF

* Correspondence: Wilfried.dinh@bayer.com

†Equal contributors

²Drug Discovery, Clinical Sciences - Experimental Medicine, Bayer Pharma AG, Leverkusen, Germany

⁴Department of Cardiology, HELIOS Clinic Wuppertal, University Hospital Witten/Herdecke, Wuppertal, Germany

Full list of author information is available at the end of the article



patients, activation of the GH/IGF-1 system has demonstrated prognostic significance, with levels of both serum IGF-1 and IGFBP-7 predicting clinical outcomes [3–8]. However, the potential role of these markers in among patients with preserved ejection fraction (EF) is unclear. The aim of the present study was to investigate the association between IGF-1 activity, represented by the ratio of serum IGF-1 to IGFBP-7 concentrations, with severity of echocardiographic left ventricular (LV) diastolic dysfunction in a well-phenotyped cohort of subjects with normal EF.

Methods

This study enrolled consecutive patients referred for elective coronary angiography and echocardiography. Exclusion criteria included left ventricular EF < 50 %, the combination of grade 1 diastolic dysfunction with symptoms suggestive of HF, and the need for coronary revascularization with either angioplasty or coronary bypass surgery. Additional exclusion criteria included myocardial infarction < 6 weeks prior, hypertrophic cardiomyopathy, moderate-to-severe valvular heart disease, uncontrolled hypertension, uncontrolled atrial fibrillation or other severe arrhythmias, or serum-creatinine > 2.0 mg/dl. The study was approved by the local ethics committee of the University of Witten/Herdecke and was conducted in accordance with the Declaration of Helsinki. Signed informed consent was obtained from all patients.

Echocardiography was performed using a standard ultrasound system (Vivid 7, General Electric, Milwaukee, Wisconsin). Left ventricular EF was measured based on the modified biplane Simpson's method. The left atrium volume index (LAVi) was calculated using the biplane area-length method. Dimensions were recorded by standard techniques according to current guidelines [9]. Left ventricular mass index (LVMI) was calculated by the Devereux formula indexed to the body surface area. Conventional transmitral flow was measured with pulse wave Doppler. Early (E) and late atrial (A) transmitral peak flow velocities and the ratio (E/A) were measured and three consecutive beats were averaged. Pulsed wave tissue Doppler imaging (TDI) was performed at the junction of the septal and lateral mitral annulus and three consecutive beats were averaged. Early diastolic velocities (E' medial, E' lateral) were recorded; the mean value (E' average) of E' at the medial and lateral mitral annulus was determined. Ratios of E/E' medial, E/E' lateral and average E/E' ratio were calculated. Diastolic dysfunction was classified according to the consensus study by the American and European Society of Cardiology [10]. Patients were categorized into 1 of 3 groups: controls, asymptomatic left ventricular diastolic dysfunction (LVDD), and HFpEF. Controls were defined by diastolic function ($E/E' < 8$ and normal left atrial

volume index). LVDD was defined as grade I diastolic dysfunction without clinical HF symptoms of HF. HFpEF was defined as LVDD grade II or III with or without clinical symptoms or signs of HF. Signs and symptoms HF included, but not limited to fluid retention (e.g. ankle swelling), shortness of breath, reduced exercise tolerance and fatigue [11]. As mentioned, patients with grade I diastolic dysfunction with symptoms suggestive of HF were excluded.

Blood samples were drawn at rest for the analysis of routine laboratory parameters. The blood tubes were centrifuged at 2000 g at room temperature for 10 min, and serum or plasma were separated from cellular compartments and stored at -80°C for later analysis of IGF-1, IGFBP-7, N-terminal pro-B-type natriuretic peptide (NT-proBNP) and soluble suppression of tumorigenicity-2 (sST2). After thawing, plasma concentrations of IGF-1 and sST2 were measured by enzyme-linked immunosorbent assays (ELISA) in accordance with the manufacturer's instructions (human IGF-I Quantikine ELISA Kit, human ST2/IL-1 R4 Quantikine ELISA Kit, R&D Systems, Minneapolis, MN, USA). IGFBP-7 was measured using a novel sandwich immunoassay that was developed and validated using a microtiter plate prototype ELISA (Roche Diagnostics, Penzberg, Germany). The limit of detection for the IGFBP-7 assay was 0.10 ng/mL. The inter-run and intra-run coefficients of variation were 4.8 % and 3.5 % at concentrations of 38.0 ng/mL and 26.0 ng/mL. Levels of NT-proBNP were measured with the electrochemiluminescence (ECLIA) immunoassay for NT-proBNP (Roche Diagnostics, Germany) [12]. In patients without diabetes, a standardized oral glucose tolerance test (oGTT) was performed according to the World Health Organization protocol as previously described [13]. Metabolic syndrome was diagnosed according to the amended National Cholesterol Education Program's Adult Treatment Panel III (ATP-III) guidelines [14].

Baseline characteristics for controls, LVDD patients, and HFpEF patients were compared. IGFBP-7/IGF-1 ratios were calculated for each patient. Spearman rank correlation was used to test association between IGFBP-7/IGF-1 ratio and age, NT-proBNP, and sST2 and between log IGF axis and body mass index (BMI), waist circumference, hip circumference, glucose levels and the homeostasis model assessment of insulin resistance (HOMA) index. IGF-1, IGFBP-7 and IGFBP-7/IGF-1 axis levels were compared across the 3 patient groups and different categories of the E/E' average ratios and the left atrial volume index by the Jonckheere-Terpstra test. A multivariable model was included to predict presence of HFpEF and included the following covariates: age, gender, BMI, coronary artery disease, hypertension, NT-proBNP, and IGFBP-7/IGF-1 ratio.

Continuous variables were reported as medians (interquartile range) and categorical variables were reported as frequencies and percentages, unless otherwise specified.

Log-transformed values were used as appropriate. Non-parametric tests for group differences between categories were performed. We used the Kruskal-Wallis or Jonckheere-Terpstra test to test the equality of medians among more than two distinct groups. The Wilcoxon-Mann-Whitney *U*-test was used to analyze differences between the medians of two groups and the χ^2 test to evaluate differences in proportions in more than 2 sets of categorical variables. Fisher's Test was used for the comparison of two sets of binary variables. The

incremental diagnostic utility of the IGFBP7/IGF-1 ratio was assessed by comparing the areas under the curve (AUCs) of receiver operating characteristics (ROC) curves. All analyses were performed using SPSS statistical software (SPSS 17.0, Chicago, IL). A *p*-value < 0.05 or less was considered statistically significant.

Results

Overall, the study included 300 patients (mean age 64 ± 10 years; 51 % men), of which 168 patients had asymptomatic LVDD, 77 patients had HFpEF, and 55 were controls. Baseline patient characteristics are summarized in Table 1. As compared with controls, patients with

Table 1 Baseline characteristics of study participants (n = 300)

Variable	Controls (n = 55)	LVDD (n = 168)	HFpEF (n = 77)	<i>p</i> -value
Demographics and vital signs				
Age (years)	54 [48–61]	66 [58–71]	73 [68–77]	< 0.001
Male	52.7 %	56.2 %	40.3 %	0.138
BMI (kg/m ²)	25.5 [24.1–29.1]	27.8 [25.6– 32.3]	27.5 [25.7– 32.0]	0.008
Waist circumference (cm)	98 [86–107]	102 [94–114]	102 [98–111]	0.004
Hip circumference (cm)	98 [94–103]	103 [96–111]	105 [98–114]	0.002
Systolic BP (mmHg)	125 [110–136]	134 [127–140]	136 [130–140]	< 0.001
Diastolic BP (mmHg)	80 [70–80]	80 [76–84]	80 [72–84]	0.013*
Heart rate (bpm)	70 [68–76]	72 [69–76]	70 [65–76]	0.195
Medical history				
Hypertension	69 %	88 %	96 %	< 0.001
T2DM	12.7 %	42.6 %	53.2 %	< 0.001
CAD	38.2 %	58.6 %	63.6 %	0.023
CABG	1.8 %	3.0 %	11.7 %	0.001
PCI	5.5 %	16.1 %	13.2 %	0.155
Myocardial infarction	14.5 %	21.3 %	22.1 %	0.572
Medications				
Beta-blocker	50.9 %	60.9 %	74.0 %	0.041
ACE inhibitor	47.3 %	65.1 %	54.5 %	< 0.001
ARB	10.9 %	10.1 %	29.9 %	0.044
Diuretics	14.5 %	26.6 %	46.8 %	< 0.001
Aspirin	52.7 %	75 %	76.6 %	0.007
Calcium blockers	10.9 %	13.6 %	27.3 %	0.024
Biomarkers				
Creatinine (mg/dl)	0.8 [0.7–0.9]	0.9 [0.7–0.9]	0.90 [0.75– 1.10]	0.060
Hba1c (%)	5.7 [5.4–5.9]	6.0 [5.7– 6.6]	6.1 [5.7–6.7]	< 0.001
sST2 (ng/ml)	13.50 [9.2–20.6]	16.20 [12.35– 21.65]	16.9 [12.2– 25.9]	0.007
NT-proBNP (pg/mL)	90.10 [45.8–129.2]	86.85 [43.7–173.4]	343.6 [151.7–703.4]	< 0.001

Values are median (interquartile range) and %

ACE Angiotensin converting enzyme; ARB angiotensin II receptor blocker; BMI body mass index; BP blood pressure; CAD coronary artery disease; CABG coronary artery bypass graft; Hba1c hemoglobin A1c; HFpEF heart failure with preserved ejection fraction; LVDD asymptomatic left ventricular diastolic dysfunction; NT-proBNP N-terminal pro-B-type natriuretic peptide; PCI percutaneous coronary intervention; sST2 soluble suppression of tumorigenicity-2; T2DM type 2 diabetes mellitus. Non-parametric tests for group differences between categories were performed. We used the Kruskal-Wallis to test the equality of medians among more than two distinct groups. The Wilcoxon-Mann-Whitney *U*-test was used to analyze differences between the medians of two groups and the χ^2 test to evaluate differences in proportions in more than 2 sets of categorical variables

LVDD and HFpEF tended to have higher BMI, weight circumference, and systolic blood pressure, and were more likely to have pre-existing hypertension, diabetes, and coronary artery disease. Levels of sST2 and NT-proBNP were highest among HFpEF patients. There was a progressive decrease in serum IGF-1 levels from controls to LVDD patients to HFpEF patients, with HFpEF patients having the lowest levels (all $P < 0.001$, respectively, Table 2, Fig. 1). In contrast, there was a progressive increase in IGFBP-7 level and IGFBP-7/IGF-1 ratio from controls to LVDD patients to HFpEF patients (all $P < 0.001$). In multivariable analysis, age ($P = 0.001$), NT-proBNP ($P < 0.001$), and IGFBP-7/IGF-1 ratio ($P = 0.005$) were independently associated with HFpEF.

The diagnostic performance for the diagnosis of HFpEF was analyzed by ROC analysis for NT-proBNP, IGF-1, IGFBP7 and the IGFBP7/IGF-1 ratio in the subgroups of HFpEF patients and controls (Table 3).

IGFBP-7/IGF-1 ratio was positively correlated with age ($r = 0.471$; $p < 0.001$) and other prognostic biomarkers including NT-proBNP ($r = 0.267$, $p < 0.001$, Fig. 2), sST2 ($r = 0.157$, $r = 0.006$) and hs-CRP ($r = 0.182$, $p = 0.002$). When the study population was stratified by sST2 level, HFpEF patients with sST2 ≥ 35 ng/ml had higher IGFBP-7/IGF-1 ratios than HFpEF patients with < 35 ng/ml ($P = 0.022$, Fig. 3). Patients with IGFB-7/IGF-1 ratios above the median demonstrated significantly higher LAVi, E/e' ratio, and NT-proBNP levels compared to patients below the median (all $P \leq 0.02$, Fig. 4). The left ventricular mass index (LVMI) and global longitudinal strain (GLS) was significantly different between the study group (all $p < 0.05$), however, there were no correlation between median IGFBP-7/IGF-1 ratio and the or GLS (all $P > 0.05$, respectively).

In assessment of associations between IGFBP-7/IGF-1 and metabolic function, significant positive correlations were found with BMI ($r = 9.193$, $P = 0.001$), waist circumference ($r = 0.184$, $p = 0.002$) and hip circumference ($r = 0.244$, $P < 0.001$). In the overall study populations, patients with metabolic syndrome showed significant increase in the IGFBP-7/IGF-1 ratio compared to patients without metabolic syndrome (0.53 [0.41-0.74] vs. 0.47 [0.36-0.59], respectively, $p = 0.002$). Similarly, the IGFBP-7/IGF-1 ratio was higher in subjects with diabetes compared

to patients without diabetes (0.56 [0.43-0.79] vs. 0.47 [0.36-0.60], respectively, $P < 0.001$)

Discussion

To our knowledge, this is the first published report linking the IGFBP-7/IGF-1 axis to the presence and severity of diastolic function abnormalities and HFpEF, thus identifying a potential new candidate biomarker for this population. In the present study, higher IGFBP-7 or IGFBP-7/IGF-1 ratio values and lower IGF-1 levels showed a graded correlation from controls to LVDD to HFpEF. The ROC analysis showed a sufficiently well performance for IGF1, IGFBP7 and the IGFBP7/IGF-1 ratio. In addition, higher IGFBP-1/GF-1 ratios were associated with established markers of diastolic dysfunction including LAVi and the E/E' ratio. Particularly, an increased LAVi without concomitant mitral valve disease reflects a chronic remodeling process compatible with HFpEF [15]. The lack of correlation to the LVMI and GLS.

Furthermore, we found that elevated IGFBP-7/IGF-1 ratios were associated with elevated NT-proBNP levels, a well-recognized prognostic marker and indicator of elevated ventricular filling pressures among patients regardless of EF [16, 17].

Low levels of IGF-1 have been reported in patients with HFpEF [6]. To our knowledge, the present study is the first to show a significant inverse relationship between IGF-1 serum concentration and the presence and severity of LVDD among patients with preserved EF. Because physiologic effects of IGF-1 suggest potential beneficial effects on cardiac metabolism, cell growth, and cardiac function, GH therapy has already been tested in HFpEF patients with mixed results [18]. These inconsistent findings may be due to a discrepancy between circulating levels of IGF-1 and the activity of IGF-1, related to the complex regulation of IGF-1 activity in vivo where it is bound to IGFBPs. Thus, we hypothesized the ratio of IGFBPs/IGF-1 may serve as a surrogate to better estimate the activity of IGF-1 in patients. Hence, this ratio was tested in the current study.

A recent analysis identified a potential link between IGFBP-7 and hepatic fibrosis [19]. Given fibrosis is an important pathophysiologic mechanism inherent to many HFpEF patients [20], it can be hypothesized that

Table 2 IGF-1, IGFBP7 and IGFBP-7/IGF-1 ratio ($n = 300$)

Biomarker	Controls ($n = 55$)		LVDD ($n = 168$)		HFpEF ($n = 77$)	
	Median [IQ range]	Range	Median [IQ range]	Range	Median [IQ range]	Range
IGF-1 (ng/ml)	120.00 [100.80-144.00]	61.60-217.50	112.30 [88.80-137.10]	42.20-216.40	99.50 [72.20-124.40]	21.80-191.60
IGFBP-7 (ng/ml)	50.30 [43.10-55.30]	30.80-79.80	54.40 [48.15-63.40]	30.20-115.80	61.10 [51.60-69.70]	32.90-177.6
IGFBP7/IGF-1	0.43 [0.33-0.56]	0.019-0.87	0.48 [0.38-0.66]	0.19-1.50	0.68 [0.50-0.88]	0.22-3.20

IGF-1 insulin-like growth factor-1; IGFBP-7 insulin-like growth factor binding protein-7. We used the Kruskal-Wallis to test the equality of medians among more than two distinct groups

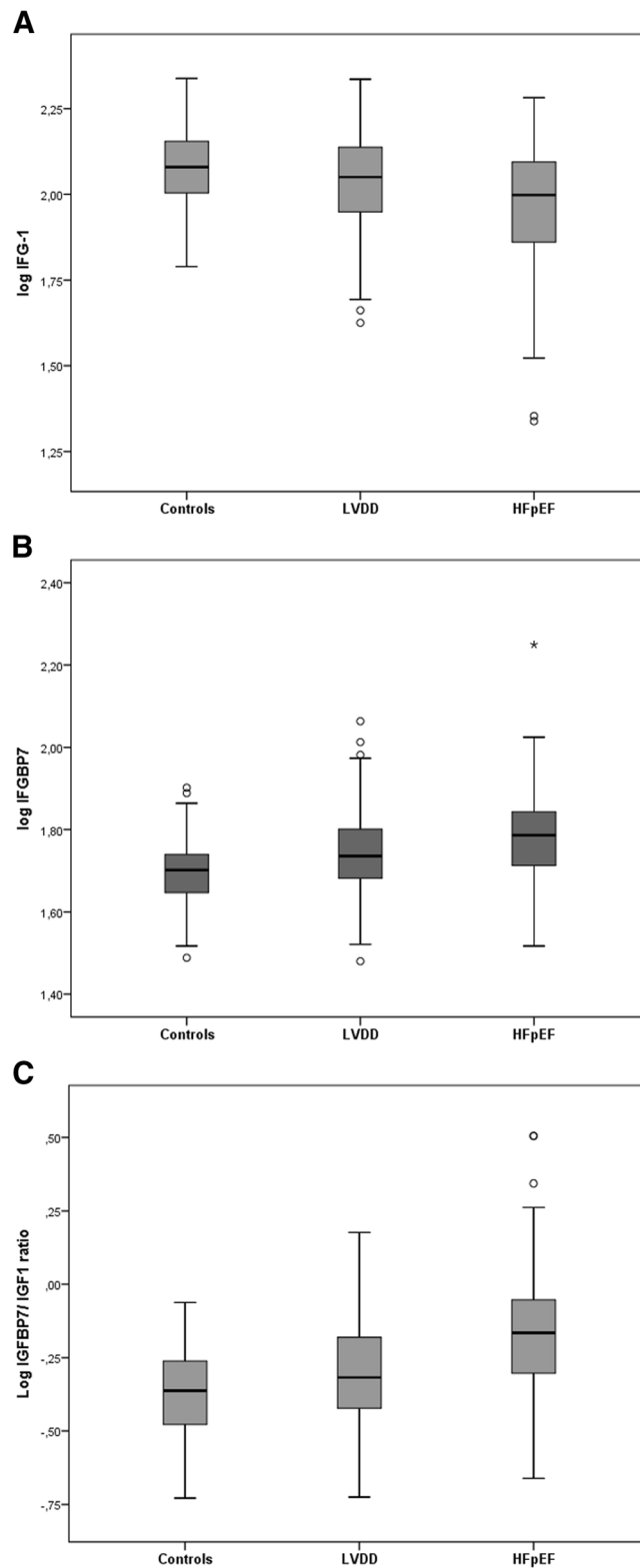


Fig. 1 Comparison of serum insulin-like growth factor-1 (IGF-1) (a), and insulin-like growth factor-binding protein-7 concentrations (IGFBP-7) (b), and the insulin-like growth factor axis (the molar ratio of IGFBP-7 and IGF-1) (c) between controls, LVDD and HFpEF. Log IGFBP-7, log IGF-1 and the IGFBP7/IGF-1 levels are presented as box (25th percentile, median, 75th percentile), and whiskers plots, with outliers expressed as dots. All comparisons, $P < 0.001$. LVDD, asymptomatic left ventricular diastolic dysfunction; HFpEF, heart failure with preserved ejection fraction

Table 3 Receiver-operating analysis for heart failure biomarkers

Biomarker	AUC	Std. Error	95%CI	p-value
IGF-1 (ng/ml)	0.694	0.046	0.605-0.783	< 0.001
IGFBP-7 (ng/ml)	0.730	0.044	0.643-0.817	< 0.001
IGFBP7/IGF-1	0.785	0.039	0.708-0.862	< 0.001
NT-proBNP (pg/ml)	0.835	0.036	0.765-0.905	< 0.001

Diagnostic performance of biomarkers for the diagnosis of HFpEF in the subgroup of patients with HFpEF and controls. *IGF-1* insulin-like growth factor-1; *IGFBP-7* insulin-like growth factor binding protein-7. *CI* confidence interval. T-proBNP, N-terminal pro-B natriuretic peptide

elevation of the IGFBP-7/IGF-1 axis may partly be linked to the increase of cardiac collagen content among patients with HFpEF. This is further supported by correlation to serum sST2 levels, a known marker of increased collagen synthesis by cardiac fibroblasts [20]. Circulating sST2 concentrations are believed to reflect cardiovascular stress and fibrosis, and the biomarker has recently been cleared by the US Food and Drug Administration for use in assessing prognosis in HF [21]. A sST2 level > 35 carries an increased risk of adverse outcomes [22]. In the present study, the IGFBP-7/IGF-1 ratio was significantly elevated in patients with sST2 values above > 35 ng/mL, compared to those < 35 ng/mL.

Serum IGFBP-7 levels are associated with insulin resistance and the risk of metabolic syndrome [23]. In the current study, the IGFBP-7/IGF-1 ratio was significantly increased in patients with metabolic syndrome and/or diabetes compared to those without metabolic syndrome. It has previously been shown that low

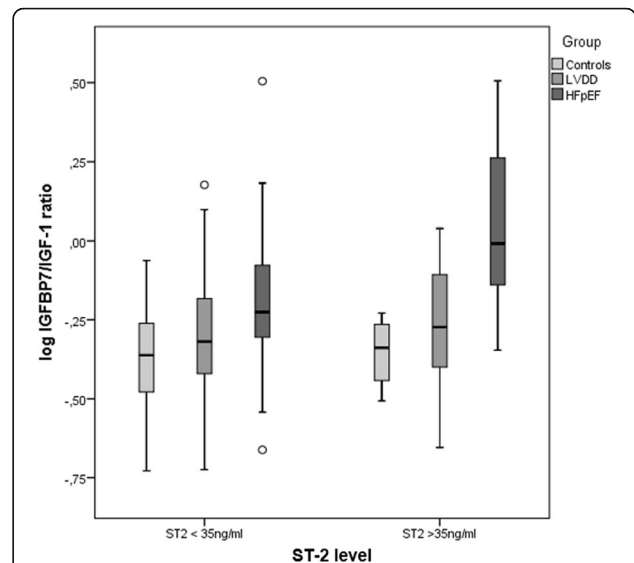


Fig. 3 IGFBP-7/IGF-1 ratio between controls, LVDD, and HFpEF, stratified by soluble ST2 level < or ≥ 35 ng/mL. LVDD, asymptomatic left ventricular diastolic dysfunction; HFpEF, heart failure with preserved ejection fraction

concentrations of IGF-1 in the circulation increased the risk for developing type 2 diabetes considerably during a 4.5-year follow-up in 615 participants [24]. Compared to other IGFBPs, the affinity of IGFBP-7 to insulin is 500-fold higher [25]. This suggests IGFBP-7 could compete with insulin receptors for insulin binding and interfere with the physiological response to insulin, contributing to insulin resistance and subsequently to

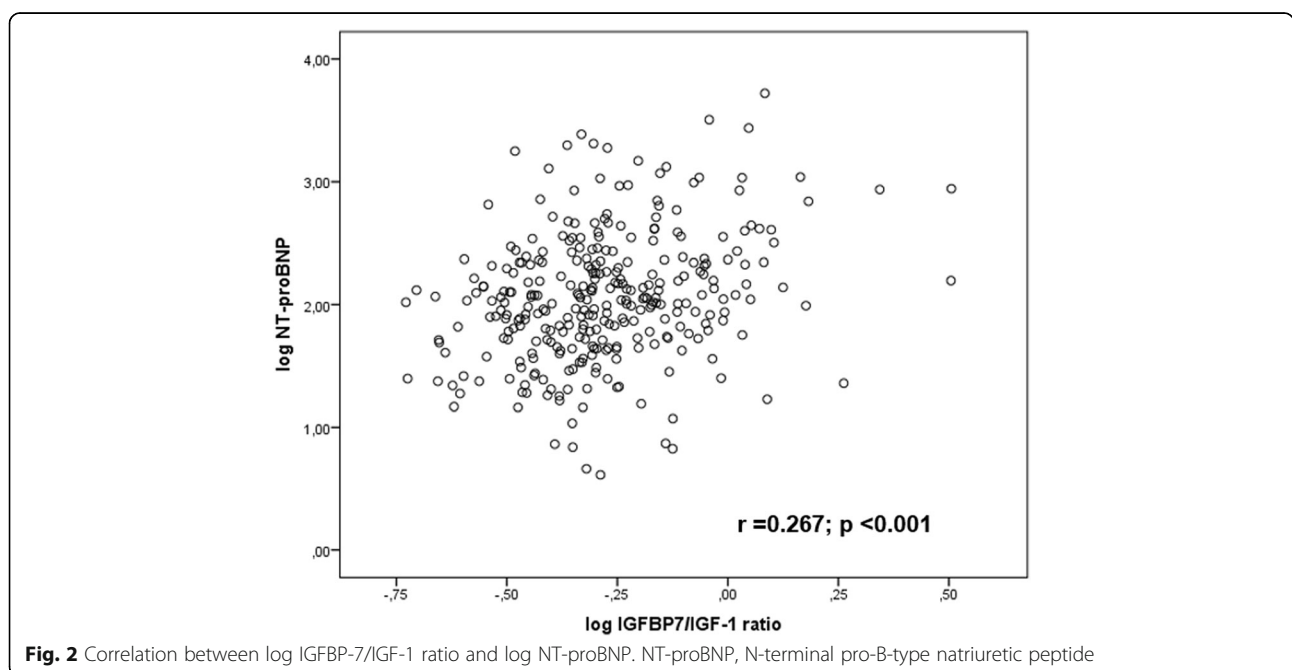


Fig. 2 Correlation between log IGFBP-7/IGF-1 ratio and log NT-proBNP. NT-proBNP, N-terminal pro-B-type natriuretic peptide

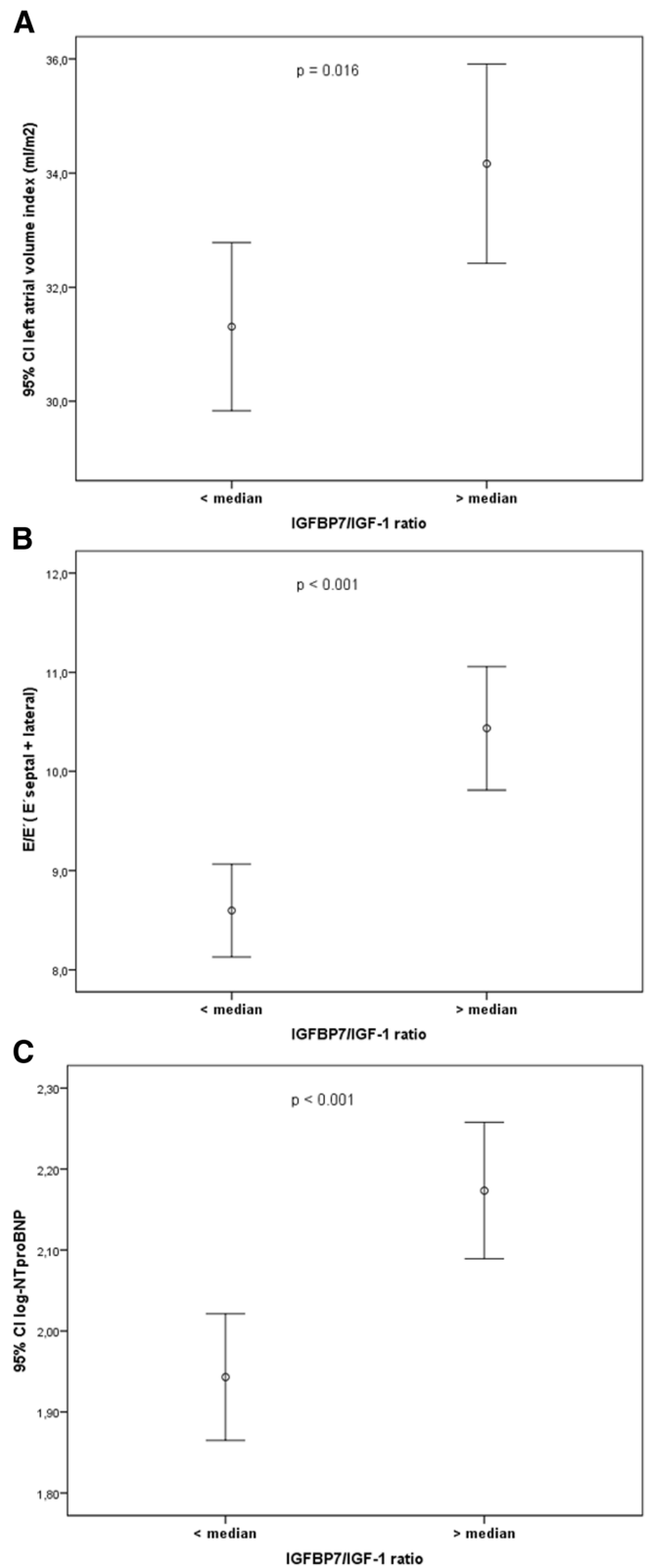


Fig. 4 Comparison of left atrial volume index (a), average E/E' ratio (septal and lateral averaged) (b), and NT-proBNP levels (c) for patients above and below the median IGFBP-7/IGF-1 ratio

development of diabetes and cardiovascular disease [26]. Indeed, diabetes mellitus and metabolic syndrome are known to be associated asymptomatic LVDD as well as HFpEF [27–29].

HFpEF is a clinical syndrome strongly associated with metabolic abnormalities leading to cardiac dysfunction, skeletal muscle deconditioning, and cachexia [30]. The present data support the IGF axis as a promising “cardio-metabolic biomarker,” linking cardiac structure and function to metabolic abnormalities in patients with HFpEF. These emerging new biomarkers may complement established biomarkers such as natriuretic peptides, troponins, and sST2, reflecting different pathophysiological pathways. For a patient population presently without evidence-based treatment options, a comprehensive multi-marker approach has the potential to improve patient stratification, prognostication, and guide selection/titration of investigational therapeutics [31].

Several limitations of this study must be acknowledged. The retrospective observational nature of the present study prohibits definitive determination of cause and effect relationships. Second, the present study was a single-center experience with a relatively small number of subjects. Third, longitudinal follow-up data were not available to test associations between the IGFBP-7/IGF-1 axis and clinical outcomes. Moreover, we enrolled consecutive patients referred for elective coronary angiography and echocardiography which may not represent a general population cohort without evidence or suspicious for cardiovascular diseases. In addition, in the control group, NT-proBNP levels were higher than previously reported in healthy controls and comparable levels that have been described in patients with AHA/ACC stage B HF [32], indicating that some degree cardiac dysfunction in this cohort. However, the NT-proBNP levels were still within the normal limits.

Lastly, other IGFBPs can also influence IGF-1 activity and thus the IGFBP-7/IGF-1 axis may not be a complete measure of IGF-1 activity.

Conclusion

In conclusion, this exploratory, hypothesis-generating study suggests the IGFBP-7/IGF-1 axis correlates with metrics of diastolic dysfunction and may act as a novel biomarker in patients with HFpEF. A rise in IGFBP-7 or IGFBP-7/IGF-1 ratio may reflect worsening diastolic function and adverse cardiac remodeling. Further prospective studies are needed to determine the diagnostic and prognostic value of the IGF axis in HFpEF and the potential role as a therapeutic target.

Abbreviations

ATP-III: Adult Treatment Panel III; BMI: Body mass index; E: Early diastolic inflow velocity; E': Early diastolic relaxation velocity; EF: Ejection Fraction; ELISA: Enzyme-linked immunosorbent assays; GH: Growth hormone; HF: Heart

Failure; Hs-CRP: High sensitivity c-reactive protein; HOMA: Homeostasis model assessment of insulin resistance index; HFpEF: Heart Failure with preserved ejection fraction; HFrEF: Heart Failure with reduced ejection fraction; IGFBP: Insulin-like growth factor binding protein; IGFBP1: Insulin-like growth factor binding protein-1; IGFBP7: Insulin-like growth factor binding protein-7; LAVi: Left ventricular volume index; LV: Left ventricular; LVDD: Left ventricular diastolic dysfunction; NTpro-BNP: N-terminal pro-B-type natriuretic peptide; oGTT: Oral glucose tolerance test; ST2: Soluble suppression of tumorigenicity-2

Acknowledgments

Parts of this study were included in Daniel Scheyer's doctoral thesis.

Funding

The study was funded by the Dr. Werner Jackstädt Foundation and the Heinz-Dieter Oberdick Foundation, Wuppertal.

Availability of data and materials

Public deposition of the patients' datasets does not comply with the inner policy of the authors' institution. In order to protect the patients' identity datasets will not be made available. However, the analyzed data supporting the conclusions of the present study are included within the article.

Authors' contributions

TK, MK and MS contributed to the discussion and data interpretation. DS performed echocardiographic measurements and contributed to the manuscript, MG edited and contributed to the manuscript and contributed to data interpretation. FK, MCB and SG researched data, edited the manuscript and contributed to the data interpretation and discussion. WD wrote manuscript, researched data, performed echocardiographic measurements and contributed to statistical analysis. All authors read and approved the final manuscript.

Competing interests

Dr. Gheorghide has been a consultant for Abbott Laboratories, AstraZeneca, Bayer Schering Pharma AG, Cardiocell LLC, Cardioentis Ltd, GlaxoSmithKline, Johnson & Johnson, Medtronic, Merck, Novartis Pharma AG, Ono Pharmaceuticals USA, Otsuka Pharmaceuticals, Sanofi-Aventis, Sigma Tau, Solvay Pharmaceuticals, Stealth BioTherapeutics, Sticares InterACT, Takeda Pharmaceuticals North America, Inc and Trevena Therapeutics. Drs. Kramer and Dinh are employees of Bayer Healthcare. All other authors declare that they have no competing interests.

Consent for publication

Not applicable.

Ethics approval and consent to participate

As described in the methods section, the study was approved the local ethics committee of the University of Witten/Herdecke and was conducted in accordance with the Declaration of Helsinki. All participants received detailed information about the study and signed informed consent was obtained from all patients.

Author details

¹Klinik Königsfeld der Deutschen Rentenversicherung Westfalen in Ennepetal (NRW), University Hospital, Witten/Herdecke, Germany. ²Drug Discovery, Clinical Sciences - Experimental Medicine, Bayer Pharma AG, Leverkusen, Germany. ³Division of Cardiology, Duke University Medical Center, Durham, NC, USA. ⁴Department of Cardiology, HELIOS Clinic Wuppertal, University Hospital Witten/Herdecke, Wuppertal, Germany. ⁵Center for Cardiovascular Innovation, Northwestern University Feinberg School of Medicine, Chicago, USA.

Received: 15 July 2016 Accepted: 14 October 2016

Published online: 21 October 2016

References

- Shah RV, Desai AS, Givertz MM. The effect of renin-angiotensin system inhibitors on mortality and heart failure hospitalization in patients with heart failure and preserved ejection fraction: a systematic review and meta-analysis. *J Card Fail.* 2010;16(3):260–7.

2. Shah SJ. Matchmaking for the optimization of clinical trials of heart failure with preserved ejection fraction: no laughing matter. *J Am Coll Cardiol*. 2013;62(15):1339–42.
3. Chen D, Yoo BK, Santhekadur PK, Gredler R, Bhutia SK, Das SK, Fuller C, Su ZZ, Fisher PB, Sarkar D. Insulin-like growth factor-binding protein-7 functions as a potential tumor suppressor in hepatocellular carcinoma. *Clin Cancer Res*. 2011;17(21):6693–701.
4. Oh Y, Nagalla SR, Yamanaka Y, Kim HS, Wilson E, Rosenfeld RG. Synthesis and characterization of insulin-like growth factor-binding protein (IGFBP)-7. Recombinant human mac25 protein specifically binds IGF-I and -II. *J Biol Chem*. 1996;271(48):30322–5.
5. Sacca L, Cittadini A, Fazio S. Growth hormone and the heart. *Endocr Rev*. 1994;15(5):555–73.
6. Jankowska EA, Biel B, Majda J, Szklarska A, Lopuszanska M, Medras M, Anker SD, Banasiak W, Poole-Wilson PA, Ponikowski P. Anabolic deficiency in men with chronic heart failure: prevalence and detrimental impact on survival. *Circulation*. 2006;114(17):1829–37.
7. Gandhi PU, Gaggin HK, Sheftel AD, Belcher AM, Weiner RB, Baggish AL, Motiwala SR, Liu PP, Januzzi Jr JL. Prognostic usefulness of insulin-like growth factor-binding protein 7 in heart failure with reduced ejection fraction: a novel biomarker of myocardial diastolic function? *Am J Cardiol*. 2014;114(10):1543–9.
8. Motiwala SR, Szymonifka J, Belcher A, Weiner RB, Baggish AL, Gaggin HK, Bhardwaj A, Januzzi Jr JL. Measurement of novel biomarkers to predict chronic heart failure outcomes and left ventricular remodeling. *J Cardiovasc Transl Res*. 2014;7(2):250–61.
9. Lang RM, Bierig M, Devereux RB, Flachskampf FA, Foster E, Pellikka PA, Picard MH, Roman MJ, Seward J, Shanewise JS, et al. Recommendations for chamber quantification: a report from the American Society of Echocardiography's Guidelines and Standards Committee and the Chamber Quantification Writing Group, developed in conjunction with the European Association of Echocardiography, a branch of the European Society of Cardiology. *J Am Soc Echocardiogr*. 2005;18(12):1440–63.
10. Nagueh SF, Appleton CP, Gillebert TC, Marino PN, Oh JK, Smiseth OA, Waggoner AD, Flachskampf FA, Pellikka PA, Evangelisa A. Recommendations for the evaluation of left ventricular diastolic function by echocardiography. *Eur J Echocardiogr*. 2009;10(2):165–93.
11. Ponikowski P, Voors AA, Anker SD, Bueno H, Cleland JG, Coats AJ, Falk V, Gonzalez-Juanatey JR, Harjola VP, Jankowska EA, et al. ESC Guidelines for the diagnosis and treatment of acute and chronic heart failure: The Task Force for the diagnosis and treatment of acute and chronic heart failure of the European Society of Cardiology (ESC). Developed with the special contribution of the Heart Failure Association (HFA) of the ESC. *Eur J Heart Fail*. 2016;18(8):891–975.
12. Prontera C, Zucchelli GC, Vittorini S, Storti S, Emdin M, Clerico A. Comparison between analytical performances of polyclonal and monoclonal electrochemiluminescence immunoassays for NT-proBNP. *Clin Chim Acta*. 2009;400(1–2):70–3.
13. Rathmann W, Haastert B, Icks A, Lowel H, Meisinger C, Holle R, Giani G. High prevalence of undiagnosed diabetes mellitus in Southern Germany: target populations for efficient screening. The KORA survey 2000. *Diabetologia*. 2003;46(2):182–9.
14. Expert Panel on Detection, Evaluation, and Treatment of High Blood Cholesterol in Adults. Executive Summary of The Third Report of The National Cholesterol Education Program (NCEP) Expert Panel on Detection, Evaluation, and Treatment of High Blood Cholesterol In Adults (Adult Treatment Panel III). *Jama* 2001, 285(19):2486–2497.
15. Rossi A, Gheorghiadu M, Triposkiadis F, Solomon SD, Pieske B, Butler J. Left atrium in heart failure with preserved ejection fraction: structure, function, and significance. *Circ Heart Fail*. 2014;7(6):1042–9.
16. van Veldhuisen DJ, Linssen GC, Jaarsma T, van Gilst WH, Hoes AW, Tijssen JG, Paulus WJ, Voors AA, Hillege HL. B-type natriuretic peptide and prognosis in heart failure patients with preserved and reduced ejection fraction. *J Am Coll Cardiol*. 2013;61(14):1498–506.
17. Iwanaga Y, Nishi I, Furuichi S, Noguchi T, Sase K, Kihara Y, Goto Y, Nonogi H. B-type natriuretic peptide strongly reflects diastolic wall stress in patients with chronic heart failure: comparison between systolic and diastolic heart failure. *J Am Coll Cardiol*. 2006;47(4):742–8.
18. Osterziel KJ, Strohm O, Schuler J, Friedrich M, Hanlein D, Willenbrock R, Anker SD, Poole-Wilson PA, Ranke MB, Dietz R. Randomised, double-blind, placebo-controlled trial of human recombinant growth hormone in patients with chronic heart failure due to dilated cardiomyopathy. *Lancet*. 1998; 351(9111):1233–7.
19. Guo XH, Liu LX, Zhang HY, Zhang QQ, Li Y, Tian XX, Qiu ZH. Insulin-like growth factor binding protein-related protein 1 contributes to hepatic fibrogenesis. *J Dig Dis*. 2014;15(4):202–10.
20. Zile MR, Baicu CF. Biomarkers of diastolic dysfunction and myocardial fibrosis: application to heart failure with a preserved ejection fraction. *J Cardiovasc Transl Res*. 2013;6(4):501–15.
21. Yancy CW, Jessup M, Bozkurt B, Butler J, Casey Jr DE, Drazner MH, Fonarow GC, Geraci SA, Horwich T, Januzzi JL, et al. 2013 ACCF/AHA guideline for the management of heart failure: a report of the American College of Cardiology Foundation/American Heart Association Task Force on Practice Guidelines. *J Am Coll Cardiol*. 2013;62(16):e147–239.
22. Zile MR, Jhund PS, Baicu CF, Claggett BL, Pieske B, Voors AA, Prescott MF, Shi V, Lefkowitz M, McMurray JJ et al. Plasma Biomarkers Reflecting Profibrotic Processes in Heart Failure With a Preserved Ejection Fraction: Data From the Prospective Comparison of ARNI With ARB on Management of Heart Failure With Preserved Ejection Fraction Study. *Circ Heart Fail* 2016;99:e002551. doi: 10.1161/CIRCHEARTFAILURE.115.002551
23. Liu Y, Wu M, Ling J, Cai L, Zhang D, Gu HF, Wang H, Zhu Y, Lai M. Serum IGFBP7 levels associate with insulin resistance and the risk of metabolic syndrome in a Chinese population. *Sci Rep*. 2015;5:10227.
24. Sandhu MS, Heald AH, Gibson JM, Cruickshank JK, Dunger DB, Wareham NJ. Circulating concentrations of insulin-like growth factor-I and development of glucose intolerance: a prospective observational study. *Lancet*. 2002; 359(9319):1740–5.
25. Yamanaka Y, Wilson EM, Rosenfeld RG, Oh Y. Inhibition of insulin receptor activation by insulin-like growth factor binding proteins. *J Biol Chem*. 1997; 272(49):30729–34.
26. Lopez-Bermejo A, Khosravi J, Fernandez-Real JM, Hwa V, Pratt KL, Casamitjana R, Garcia-Gil MM, Rosenfeld RG, Ricart W. Insulin resistance is associated with increased serum concentration of IGF-binding protein-related protein 1 (IGFBP-rP1/MAC25). *Diabetes*. 2006;55(8):2333–9.
27. Dinh W, Lankisch M, Nickl W, Scheyer D, Scheffold T, Kramer F, Krahn T, Klein RM, Coll Barroso M, Futh R. Insulin resistance and glycaemic abnormalities are associated with deterioration of left ventricular diastolic function: a cross-sectional study. *Cardiovasc Diabetol*, 2010;9:63. doi: 10.1186/1475-2840-9-63
28. Scherbakov N, Bauer M, Sandek A, Szabo T, Topper A, Jankowska EA, Springer J, von Haehling S, Anker SD, Lainscak M, et al. Insulin resistance in heart failure: differences between patients with reduced and preserved left ventricular ejection fraction. *Eur J Heart Fail*. 2015;17(10):1015–21.
29. Greene SJ, Fonarow GC. Insulin resistance in heart failure: widening the divide between reduced and preserved ejection fraction? *Eur J Heart Fail*. 2015;17(10):991–3.
30. Mentz RJ, Kelly JP, von Lueder TG, Voors AA, Lam CS, Cowie MR, Kjeldsen S, Jankowska EA, Atar D, Butler J, et al. Noncardiac comorbidities in heart failure with reduced versus preserved ejection fraction. *J Am Coll Cardiol*. 2014;64(21):2281–93.
31. Sanders-van Wijk S, van Empel V, Davarzani N, Maeder MT, Handschin R, Pfisterer ME, Brunner-La Rocca HP, investigators T-C. Circulating biomarkers of distinct pathophysiological pathways in heart failure with preserved vs. reduced left ventricular ejection fraction. *Eur J Heart Fail*. 2015;17(10):1006–14.
32. Emdin M, Passino C, Prontera C, Fontana M, Poletti R, Gabutti A, Mammì C, Giannoni A, Zyw L, Zucchelli G, et al. Comparison of brain natriuretic peptide (BNP) and amino-terminal ProBNP for early diagnosis of heart failure. *Clin Chem*. 2007;53(7):1289–97.