

Barrier transmission of Dirac-like pseudospin-one particles

Daniel F. Urban*

Physikalisches Institut, Albert-Ludwigs-Universität, D-79104 Freiburg, Germany

Dario Bercioux

*Physikalisches Institut, Albert-Ludwigs-Universität, D-79104 Freiburg, Germany and
Freiburg Institute for Advanced Studies, Albert-Ludwigs-Universität, D-79104 Freiburg, Germany*

Michael Wimmer

Instituut-Lorentz, Universiteit Leiden, P.O. Box 9506, NL-2300 RA Leiden, The Netherlands

Wolfgang Häusler

Institut für Physik, Universität Augsburg, D-86135 Augsburg, Germany

(Received 5 July 2011; published 23 September 2011)

We address the problem of barrier tunneling in the two-dimensional \mathcal{T}_3 lattice (dice lattice). In particular, we focus on the low-energy, long-wavelength approximation for the Hamiltonian of the system, where the lattice can be described by a Dirac-like Hamiltonian associated with a pseudospin one. The enlarged pseudospin $S = 1$ (instead of $S = \frac{1}{2}$ as for graphene) leads to an enhanced “super” Klein tunneling through rectangular electrostatic barriers. Our results are confirmed via numerical investigation of the tight-binding model of the lattice. For a uniform magnetic field, we discuss the Landau levels and we investigate the transparency of a rectangular magnetic barrier. We show that the latter can mainly be described by semiclassical orbits bending the particle trajectories, qualitatively similar as it is the case for graphene. This makes it possible to confine particles with magnetic barriers of sufficient width.

DOI: [10.1103/PhysRevB.84.115136](https://doi.org/10.1103/PhysRevB.84.115136)

PACS number(s): 73.23.Ad, 73.40.Gk, 73.22.Pr

I. INTRODUCTION

Nanostructures in two-dimensional electron systems are usually patterned by using gate electrodes creating adequate electrostatic (scalar) potential barriers. Typical examples include quantum wires and quantum dots in semiconductor heterostructures. Yet this procedure is not applicable in the case of graphene, a single layer of carbon atoms arranged in a honeycomb lattice (HCL).^{1,2} At low energies, the HCL can be described by a relativistic Dirac-Weyl Hamiltonian.³ In this limit an electrostatic potential barrier of arbitrary height and thickness is fully transparent for low-energy electrons at certain incident angles.⁴ This effect—known as Klein tunneling⁵—has recently been demonstrated experimentally using graphene heterostructures.⁶ On the other hand, sufficiently wide magnetic barriers yield zero transparency and therefore make it possible to confine electrons.^{7,8}

In this article we investigate confining properties of the so-called *dice* or \mathcal{T}_3 lattice^{9,10} [cf. Fig. 1(a)]. This lattice is described by a Dirac-like Hamiltonian^{11,12} [cf. (1) below] resembling the one describing the HCL and accordingly graphene, but with an enlarged pseudospin $S = 1$ ¹¹ compared to $S = \frac{1}{2}$ for graphene.¹ It turns out that the presence of an integer pseudospin $S = 1$ has striking consequences on the Klein tunneling: (i) Electrostatic barriers become even more transparent compared to the HCL case and (ii) there is a regime of super-Klein-tunneling with perfect transmission independent of the angle of incidence. The latter is related to a negative refraction index $\nu = -1$ and allows for the realization of a perfect focusing system.

The paper is organized as follows. First, in Sec. II, we introduce the low-energy description of the \mathcal{T}_3 lattice and its

implications on scattering at a barrier are presented. In Sec. III we solve the scattering problem of an electrostatic barrier and discuss the effect of Klein tunneling. In Sec. IV we compare the analytical results with a numerical calculation using the recursive Green’s function method. Section V is devoted to the general features of the \mathcal{T}_3 lattice in presence of a uniform magnetic field and Sec. VI deals with the scattering problem of a magnetic barrier.

II. LOW-ENERGY DESCRIPTION OF THE \mathcal{T}_3 LATTICE

The \mathcal{T}_3 lattice [cf. Fig. 1(a)] contains three inequivalent sites per unit cell. Two of these lattice sites (generally called *rim* sites A and B) are threefold coordinated while the third site (referred to as *hub* H) is connected to six nearest neighbors. The energy spectrum of the \mathcal{T}_3 lattice consists of two electron-hole symmetric branches, in addition to a unique nondispersive band at the charge neutrality point.¹¹ The latter roots in the lattice topology, which allows for insulating states with finite wave-function amplitudes on the rim sites and vanishing amplitudes on the hubs. The reciprocal lattice of \mathcal{T}_3 has a hexagonal first Brillouin zone [cf. Fig. 1(b)], with the electron-hole symmetric bands touching in the six corners of the hexagon (Dirac points). As in graphene, there are two inequivalent Dirac points, labeled K and K' .

The low-energy Hamiltonian for the \mathcal{T}_3 lattice is obtained by a long-wavelength approximation to the tight-binding Hamiltonian. For a given K point it reads¹¹

$$\mathcal{H} = v_F S \cdot \left(-i\nabla - \frac{q}{c} \mathbf{A} \right) + V \quad (1)$$

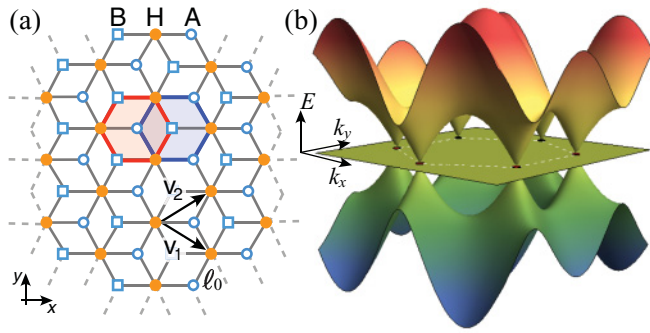


FIG. 1. (Color online) (a) The T_3 lattice in the xy plane, characterized by translation vectors $\mathbf{v}_1 = (3/2; -\sqrt{3}/2)a_0$ and $\mathbf{v}_2 = (3/2; \sqrt{3}/2)a_0$, with lattice constant a_0 . Rim sites A and B (open circles and squares, respectively) have a lower connectivity of 3 compared to 6 for the hub site (solid circles). The T_3 lattice can be viewed as two nested HCLs (emphasized by the two shaded hexagons). (b) The energy spectrum of the bulk T_3 lattice. The first Brillouin zone is indicated by the dashed line on the flat band.

(in units where $\hbar \equiv 1$). Here v_F is the Fermi velocity, the operator $\nabla = (\partial_x, \partial_y)$ is the differential operator in the xy plane, and we consider particles with negative charge $q = -e < 0$. Moreover, $V(x, y)$ represents a scalar electrostatic potential (proportional to a unit matrix in spinor space), while $\mathbf{A}(x, y)$ is the vector potential related to the z component of a magnetic field. Pseudospin components¹¹ of S ,

$$S_x = \frac{1}{\sqrt{2}} \begin{pmatrix} 0 & 1 & 0 \\ 1 & 0 & 1 \\ 0 & 1 & 0 \end{pmatrix}, \quad S_y = \frac{1}{\sqrt{2}} \begin{pmatrix} 0 & -i & 0 \\ i & 0 & -i \\ 0 & i & 0 \end{pmatrix}, \quad (2)$$

$$S_z = \begin{pmatrix} 1 & 0 & 0 \\ 0 & 0 & 0 \\ 0 & 0 & -1 \end{pmatrix},$$

form a three-dimensional representation of $SU(2)$ and satisfy angular momentum commutation relations $[S_m, S_n] = i\epsilon_{mnl}S_l$. However, contrary to Pauli matrices, they do not form a Clifford algebra; that is, $\{S_n, S_m\} \neq 2\delta_{n,m}\mathbb{I}_3$.

The T_3 model (1) generalizes graphene by enlarging pseudospin. Each plane-wave momentum eigenstate $|\mathbf{p}\rangle$ (at $V = 0$ and $\mathbf{A} = \mathbf{0}$) is pseudospin *polarized* with respect to the \mathbf{p} direction along which it experiences three possible eigenvalues $S_p = (+1, 0, -1)$. They translate into pseudo-Zeeman split energies $E = v_F(+p, 0, -p)$ constituting three bands. The “nonmagnetic” level $S_p = 0$ comprises the topologically protected dispersionless band.

In the following, we investigate the transmission probability through electrostatic or magnetic rectangular barriers of constant height and thickness d which we assume as homogeneous along the y direction as the archetype of a tunneling obstacle (cf. Fig. 2). Accordingly, the three-component eigenspinors of (1) have the structure

$$\psi(x, y) = [\psi_A(x), \psi_H(x), \psi_B(x)]e^{ik_y y}, \quad (3)$$

which comprises the amplitudes on the three sublattices of the T_3 lattice, ψ_A, ψ_H , and ψ_B .

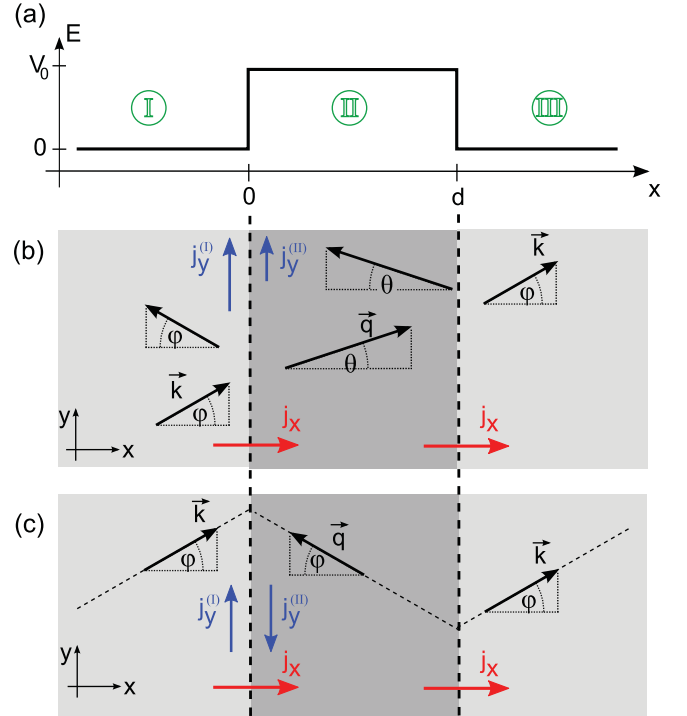


FIG. 2. (Color online) (a) Sketch of the scattering region with an electrostatic barrier of width d . (b) Wave vectors corresponding to the different plane-wave components in ψ_I, ψ_{II} , and ψ_{III} ; see Eqs. (9)–(11) for $E > V_0$. (c) Scattering trajectory in the special case $E = V_0/2$. Note that the opposite orientation of \mathbf{q} in the barrier region is due to propagation of holes $[(E - V_0) < 0]$ in II, compared to electrons ($E > 0$) in I and III.

In order to obtain the transmission probability at nonzero V or \mathbf{A} , we need to solve for the scattering problem by matching wave functions across the rectangular barrier (cf. Fig. 2). Strictly sharp potential steps would cause large momentum scattering and so violate our assumption of close vicinity to one chosen K point. Therefore, as is customary,⁴ we assume ultimately potential variations as smooth on the length scale of the lattice constant a_0 but as sharp on the Fermi wavelength $\lambda_F = 2\pi v_F/|E|$, which is large at low energies $|E|$.

To this end, let us derive the adequate matching conditions for $S = 1$ particles obeying (1) that turn out to be different from Schrödinger particles and different from $S = \frac{1}{2}$ Dirac particles. In the latter case continuity of the wave function is required across a potential step (together with continuity of the spatial derivative in the Schrödinger case). These familiar conditions need to be altered when dealing with the Hamiltonian (1). As usual, we integrate the eigenvalue equation $H\psi = E\psi$ over the small interval $x \in [-\epsilon, \epsilon]$ along the x direction and let ϵ eventually go to zero. This yields

$$\psi_H(\epsilon) = \psi_H(-\epsilon), \quad (4a)$$

$$\psi_A(\epsilon) + \psi_B(\epsilon) = \psi_A(-\epsilon) + \psi_B(-\epsilon) \quad (4b)$$

for nondiverging scalar or vector potentials, V and \mathbf{A} . While ψ_H must be continuous, Eq. (4) only demands continuity for $\psi_A + \psi_B$, allowing still for redistribution of occupation probability between A and B rim sites across potential steps. A similar integration of $H\psi = E\psi$ along the y direction yields

continuity of ψ_H and of $\psi_A - \psi_B$ as matching conditions along the x direction.

A discontinuity in the wave function components $\psi_{A/B}$ seems unexpected and an explanation in terms of physical quantities is helpful. Therefore, we calculate the probability current,

$$\mathbf{j} = \begin{pmatrix} j_x \\ j_y \end{pmatrix} = \sqrt{2}v_F \begin{pmatrix} \text{Re}[\psi_H^*(\psi_A + \psi_B)] \\ \text{Im}[\psi_H^*(\psi_A - \psi_B)] \end{pmatrix} \quad (5)$$

(see Appendix A), that satisfies a continuity equation,

$$\frac{\partial}{\partial t} |\psi(x,t)|^2 + \nabla \cdot \mathbf{j} = 0, \quad (6)$$

for the probability density $|\psi|^2 = |\psi_A|^2 + |\psi_B|^2 + |\psi_H|^2$. From the expressions of j_x and j_y we can conclude that the matching conditions correspond to a conservation of the probability current perpendicular to the barrier. On the other hand, parallel to the barrier the currents need not be equal on either side.

More generally, for a barrier perpendicular to the vector $\mathbf{n} = (\cos(\alpha), \sin(\alpha))^T$, with $\alpha \in (-\frac{\pi}{2}, \frac{\pi}{2})$, the current

$$\mathbf{j} \cdot \mathbf{n} = \sqrt{2}v_F \text{Re}[\psi_H^*(\psi_A e^{-i\alpha} + \psi_B e^{i\alpha})] \quad (7)$$

is conserved across the barrier. Therefore, only the linear combination $(\psi_A e^{-i\alpha} + \psi_B e^{i\alpha})$ is continuous across the barrier while $(\psi_A e^{-i\alpha} - \psi_B e^{i\alpha})$, in general, is discontinuous.

III. ELECTROSTATIC BARRIER

Let us consider the case of a rectangular electrostatic barrier

$$V(x,y) = V_0 \Theta(x) \Theta(d-x) \quad (8)$$

of width d and height V_0 (cf. Fig. 2). Here $\Theta(x)$ is the Heaviside step function. Due to momentum conservation parallel to the barrier, the wave function can be written as $\psi(x)e^{ik_y y}$ [cf. Eq. (3)], with homogenous y component k_y of the wave vector. For $\psi(x)$ we assume in- and outgoing plane waves at $x < 0$,

$$\psi_I(x) = \begin{pmatrix} e^{-i\varphi} \\ \sqrt{2}s \\ e^{i\varphi} \end{pmatrix} e^{ik_x x} + r \begin{pmatrix} e^{i\varphi} \\ -\sqrt{2}s \\ e^{-i\varphi} \end{pmatrix} e^{-ik_x x}, \quad (9)$$

with reflection amplitude r , that are solutions to (1) at energy $E \neq 0$. Consequently, the wave function under the barrier, $0 \leq x \leq d$, at nonzero V is of the form

$$\psi_{II}(x) = a \begin{pmatrix} e^{-i\theta} \\ \sqrt{2}s' \\ e^{i\theta} \end{pmatrix} e^{iq_x x} + b \begin{pmatrix} e^{i\theta} \\ -\sqrt{2}s' \\ e^{-i\theta} \end{pmatrix} e^{-iq_x x}, \quad (10)$$

while at $x > d$ we consider outgoing plane waves,

$$\psi_{III}(x) = t \begin{pmatrix} e^{-i\varphi} \\ \sqrt{2}s \\ e^{i\varphi} \end{pmatrix} e^{ik_x x}, \quad (11)$$

of transmission amplitude t . In (9)–(11) $\varphi = \arctan(k_y/k_x)$ is the direction of incoming and outgoing wave vectors. The barrier alters the wave vector $\mathbf{q} = (q_x, k_y)$ in its x component,

$q_x = \sqrt{(E - V_0)^2 - k_y^2}$, and direction $\theta = \arctan(k_y/q_x)$. Further, we define $s = \text{sgn}(E)$ and $s' = \text{sgn}(E - V_0)$ and assume $E \neq V_0$; the special case $E = V_0$ is treated separately below.

By imposing the matching conditions (4) to ψ_I and ψ_{II} at $x = 0$ and to ψ_{II} and ψ_{III} at $x = d$ we obtain a set of linear equations for the parameters r, t, a, b . Solving these equations yields

$$\begin{aligned} r &= -(1 - \gamma^2)(1 - e^{2iqd})\mathcal{D}^{-1}, \\ a &= -2\gamma(1 + ss'\gamma)\mathcal{D}^{-1}, \\ b &= 2\gamma(1 - ss'\gamma)e^{2iqd}\mathcal{D}^{-1}, \\ t &= -4ss'\gamma e^{-i(k-q)d}\mathcal{D}^{-1}, \end{aligned} \quad (12)$$

with $\gamma = \cos\varphi/\cos\theta$ and $\mathcal{D} = e^{2iqd}(1 - ss'\gamma)^2 - (1 + ss'\gamma)^2$. Finally, from Eqs. (12) we obtain the transmission probability

$$T_{\mathcal{T}_3} = |t|^2 = \frac{\gamma^2}{\gamma^2 + \frac{1}{4}(1 - \gamma^2)^2 \sin^2(qd)}. \quad (13)$$

This result coincides with the corresponding expression obtained recently for the line-centered square (Lieb) lattice.¹³ The functional form (13) differs considerably from the graphene case for the same rectangular barrier,¹

$$T_{\text{HCL}} = \left[1 + \sin^2(qd) \left(\frac{s' \sin(\theta) - s \sin(\varphi)}{\cos(\theta) \cos(\varphi)} \right)^2 \right]^{-1}. \quad (14)$$

The transmission $T_{\mathcal{T}_3}$ is plotted in Fig. 3(a) versus the incident angle φ for various energies $0 \leq E < V_0$, that is, in the regime of $ss' = -1$. Figure 3(b) shows the result (14) for the HCL for the same parameters for comparison. For the \mathcal{T}_3 case,

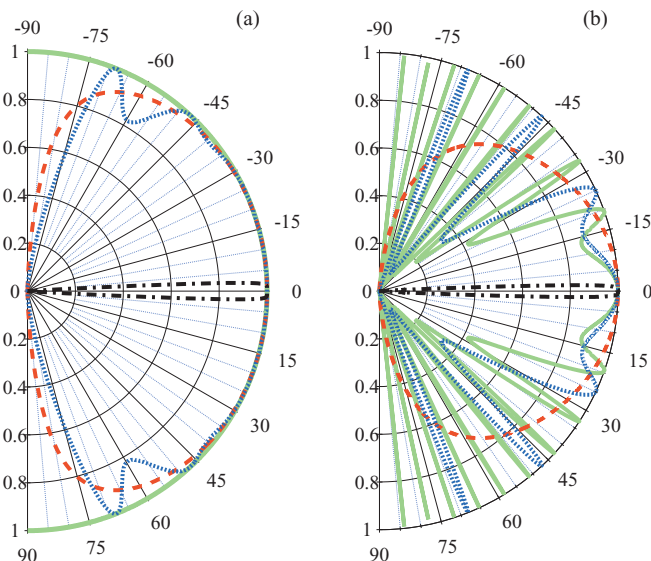


FIG. 3. (Color online) Polar plot of the transmission probability T as a function of the injection angle φ for different values of the energy E for (a) the \mathcal{T}_3 lattice and for (b) the HCL lattice. The width of the barrier is $dV_0 = 60$ in both panels. The red dashed line is for $E = 0.1V_0$, the blue dotted line is for $E = 0.4V_0$, the green solid line is for $E = 0.5V_0$, and the black dot-dashed line is for $E = 0.95V_0$. For the \mathcal{T}_3 lattice at energy $E = 0.5V_0$ we get perfect transmission, independent of the incident angle φ .

we find almost perfect transmission for a wide range of incident angles. For perpendicular incidence, that is, $\varphi = 0$, which implies $\theta = 0$, we always observe perfect transmission $T = 1$ that is usually referred to as ‘‘Klein tunneling.’’ The condition $T = 1$ is also obtained for resonant values of qd being equal to an integer multiple of π , as in graphene. Comparison between the two cases shows that electrostatic barriers on \mathcal{T}_3 are significantly more transparent than on graphene. We can even establish the inequality

$$T_{\mathcal{T}_3} \geq T_{\text{HCL}} \quad \text{for} \quad E \in \left(0, \frac{V_0}{2}\right),$$

holding at all φ for same barrier height V_0 and thickness d . We conjecture that these high transparencies make \mathcal{T}_3 even ‘‘more ballistic’’ than graphene and less sensitive to disorder¹⁴ in its transport properties at zero magnetic field.

The most striking feature in the transmission probability is that at energy $E = V_0/2$, where $\gamma = 1$, we obtain perfect transmission $T = 1$ for *any* angle φ of incidence and *any* barrier thickness. This physical effect can be analyzed by considering the scattering of a plane wave at a single electrostatic interface $V(x, y) = V_0\Theta(x)$ which describes a *np* junction. At $E = V_0/2$ electrons propagating at $x < 0$ and incoming angle φ continue to propagate as holes at $x > 0$ and a diffraction angle $\theta = \pi - \varphi$ [cf. Fig. 2(c)]. Therefore, the system can be characterized by a negative diffraction index n :¹⁵

$$n = s s' \frac{\sin \varphi}{\sin \theta} = -1. \quad (15)$$

This holds true for both the \mathcal{T}_3 and the HCL lattice. However, for the HCL the reflection probability keeps an angular dependence

$$R_{\text{HCL}} = \frac{1}{2}[1 - \cos(2\varphi)],$$

while in the case of the \mathcal{T}_3 lattice $R_{\mathcal{T}_3} = 0$.

Finally, we discuss the special case of $E = V_0$. Here let us first consider $k_y = 0$, that is, $\varphi = 0$. Then the wave function in the barrier region is constant,

$$\Psi_{\text{II}}(x) = (a, h, b)^T. \quad (16)$$

A requirement of current conservation yields the four equations

$$2(1 + r) = a + b, \quad a + b = 2te^{ik_x d}, \quad (17)$$

$$\sqrt{2}s(1 - r) = h, \quad h = \sqrt{2}st e^{ik_x d}, \quad (18)$$

which readily give $r = 0$, $(a + b) = 2$, $h = \sqrt{2}s$, and $t = e^{-ik_x d}$ and therefore perfect transmission, $|t|^2 = 1$. Note that $(a - b)$, describing a finite current in the y direction in the barrier region, *a priori* cannot be determined. We may even include an arbitrary linear combination of topological states,

$$\Psi_{\text{II}}^{\text{top}}(x) = \sum_q \alpha_q \begin{pmatrix} 1 \\ 0 \\ -1 \end{pmatrix} e^{iqx}, \quad (19)$$

which automatically satisfies $\psi_A + \psi_B = 0$ for any q and any amplitudes α_q . Due to the zero hub component, none of these states or any linear combination thereof carry current and therefore (19) does not participate in the scattering problem.

At $E = V_0$ and finite momentum k_y , that is, $\varphi \neq 0$, the wave function $\Psi_{\text{II}}(x)e^{ik_y y}$ in the barrier region is a superposition of two evanescent modes and the topological states, given by

$$\Psi_{\text{II}}(x) = \begin{pmatrix} a e^{k_y x} \\ 0 \\ b e^{-k_y x} \end{pmatrix} + \sum_q \alpha_q \begin{pmatrix} e^{-i\theta_q} \\ 0 \\ -e^{i\theta_q} \end{pmatrix} e^{iqx}, \quad (20)$$

where $\theta_q = \arctan(k_y/q)$. As argued above, the vanishing hub component directly implies that this state does not carry current; hence, we have perfect reflection ($r = -1$) and zero transmission $t = 0$. Note that continuity of $(\psi_A + \psi_B)$ at $x = 0$ and $x = d$ only makes it possible to determine two of the (in principle) infinite amount of parameters $a, b, \{\alpha_q\}$. We stress the particularity that at $E = V_0$, the transmission $T(\varphi)$ only is nonzero (and equal to 1) at the singular angle $\varphi = 0$. At $E = V_0$ there is no tunneling contribution to the current at finite incident angles, which is in striking contrast to the case of graphene.¹

Finally, we confirm to find the same transmission probability (13) when considering a potential step along an arbitrary direction, perpendicular to some vector \mathbf{n} , as expected from the rotational invariance of the low-energy Hamiltonian (1).

IV. ELECTROSTATIC BARRIER IN THE TIGHT-BINDING MODEL

So far we have assumed that the electrostatic potential does not induce scattering between the two valleys, that is, between the two inequivalent K and K' points of the first Brillouin zone. In order to examine the validity of this approximation and to study the effect of a smooth variation of the potential on the transmission, we also compute numerically the transmission probability through an electrostatic barrier in the tight-binding model.

In the following we consider the effect of a potential $V(\mathbf{n} \cdot \mathbf{r})$ on the tight-binding lattice, where \mathbf{n} is an unit vector in the direction where the potential changes. Although such a potential is, in principle, translationally invariant along the direction perpendicular to \mathbf{n} , the discreteness of the lattice reduces the translational invariance to a discrete lattice symmetry. In particular, if \mathbf{n} is commensurate with the discrete lattice, the combined system of potential and lattice is translationally invariant under shifts of \mathbf{t} , where \mathbf{t} is lattice vector perpendicular to \mathbf{n} . The wave functions are then of the Bloch form $\psi(\mathbf{r}) = e^{ik_{\parallel} \mathbf{t} \cdot \mathbf{r}/|\mathbf{t}|} u(\mathbf{r})$ with $u(\mathbf{r} + \mathbf{t}) = u(\mathbf{r})$ and $k_{\parallel} \in [-\frac{\pi}{|\mathbf{t}|}, \frac{\pi}{|\mathbf{t}|}]$. The original problem of an infinitely extended system can thus be reduced to a finite unit cell of width $|\mathbf{t}|$ with periodic boundary conditions in the direction of \mathbf{t} . The problem must then be solved for each k_{\parallel} individually, with hoppings across the unit cell boundaries being multiplied by a phase factor of $e^{\pm ik_{\parallel} |\mathbf{t}|}$.¹⁶ As long as the Fermi momentum k_F in the leads (measured with respect to the K and K' points) is smaller than $\frac{\pi}{|\mathbf{t}|}$, the scattering states have conserved parallel momentum in the leads that allows us to compute the transmission probability T as a function of the incident angle φ as in the continuum case. The transmission itself is computed using the numerical method of Ref. 17.

We consider two orientations of the potential step: A step along the y direction [$\mathbf{t} = \mathbf{v}_1 - \mathbf{v}_2$ with $\mathbf{v}_{1,2}$ the lattice vectors

from Fig. 1(a)] and along the x direction ($\mathbf{t} = 2\mathbf{v}_1 + \mathbf{v}_2$) which we—borrowing from the HCL nomenclature—call “zigzag” and “armchair” directions, respectively. Those two geometries, together with the effective unit cells, are depicted in Figs. 4(a) and 4(b). While we only show results for two particular directions, we have checked that orientations in between give equivalent results.

The two orientations zigzag and armchair are fundamentally different on the lattice level: A step along a zigzag direction cannot scatter the valleys, as the K and K' points are at different transverse (Bloch) momenta k_{\parallel} . In contrast, for a step along an armchair direction both K and K' point are projected to $k_{\parallel} = 0$; hence, intervalley scattering is always possible. Note that while an abrupt step in the zigzag direction cannot scatter the valleys, there still may be corrections to the low-energy Hamiltonian (1) in the form of masslike terms, as an abrupt step makes the lattice sites inside a unit cell inequivalent (for an extensive discussion of equivalent effects in the HCL, see Ref. 18).

In order to compare our result (13) from the low-energy Hamiltonian to the lattice results, we restrict ourselves to small energies $E \ll t$ and barrier heights $V_0 \ll t$, where t is the hopping matrix element of the tight-binding lattice. In addition, instead of abrupt jumps we ramp the potential linearly

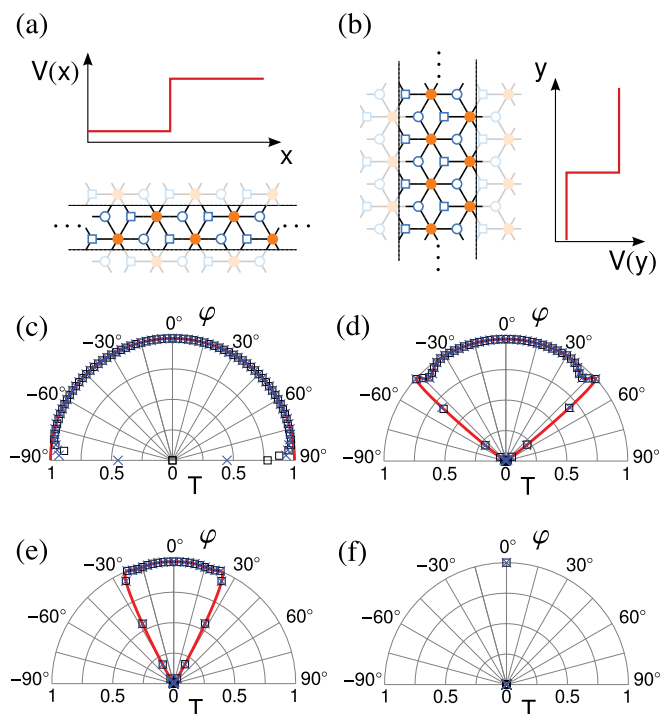


FIG. 4. (Color online) Comparison of numerical transport simulations and the analytical result for the continuum limit. Panels (a) and (b) show the geometries used in the numerical simulations, with the potential step along either (a) a zigzag direction or (b) an armchair direction. Panels (c)–(f) show a comparison of the transmission T as a function of the incident angle φ as computed numerically from the tight-binding model (black squares, armchair; blue crosses, zigzag) and from the continuum result (13) [red line, left out for clarity in (f), where there is only perfect forward scattering at $\varphi = 0$]. The parameters used are (c) $V_0 = 0.02t$, (d) $V_0 = 0.018t$, (e) $V_0 = 0.015t$, and (f) $V_0 = 0.01t$.

over a distance d_s , with $k_F d_s \ll 1$. A comparison between our analytical and numerical results is shown in Figs. 4(c)–4(f). We find perfect agreement between the low-energy, continuum, and lattice results. As predicted from the rotational invariance of the low-energy Hamiltonian, the transmission probability is independent of the direction of the potential step. In particular, we find a virtually angle-independent transmission for $E = 0.5V_0$; small deviations are only visible for angles close to grazing incidents, where lattice effects become important. We also find strictly forward transmission in the case of $E = V_0$ as predicted by the low-energy theory.

Barrier transmission on the \mathcal{T}_3 lattice differs not only at low energies from graphene, as seen from the different functional forms of the transmission probabilities $T(\varphi)$ [Eqs. (13) and (14)], but pronounced dissimilarities arise also at higher energies as investigated exemplarily now.

While we found that the transmission probability was independent of the lattice direction in the case of a small potential step at low energies, we find a quite pronounced angle dependence at higher energies and larger potential steps or larger d_s , as seen in Fig. 5(a) for parameters $E = V_0/2$, where the continuum theory yields unit transmission probability. Furthermore, for a potential step in the armchair direction the transmission is considerably smaller than for a step along the zigzag direction.

We can ascribe the difference to intervalley scattering: A step in the zigzag direction still excludes intervalley scattering due to translational symmetry but it may take place at a step in armchair direction.

In Fig. 5(b) we investigate intervalley scattering in more detail for an armchair barrier and show the probability for a valley flip in the scattering process, that is, the probability of transmission or reflection into the other valley. For energies E in the range $0 < E < V_0$ pronounced resonances are seen where intervalley scattering is strongly enhanced. This effect even increases with increasing d_s (not shown), in stark contrast to the case of a HCL lattice, where smoother potential barriers reduce intervalley scattering. We attribute this effect as being mediated by crossing of the Fermi energy with the flat band connecting both valleys when $V(\mathbf{r}) = E$ for some \mathbf{r} and this mediation taking place more efficiently at smoother barrier slopes (similar as in a Landau-Zener

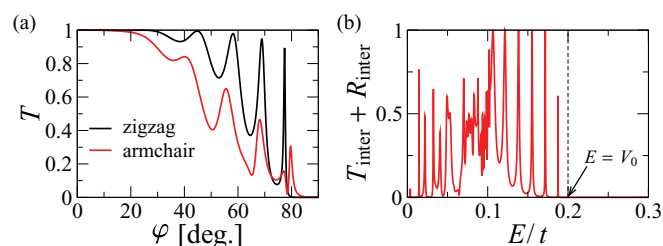


FIG. 5. (Color online) (a) Transmission as a function of incident angle φ through a smoothed potential step along a zigzag (black line) and armchair direction (red line). Parameters are $E = 0.1t$, $V_0 = 0.2t$, $d = 200\sqrt{3}a_0$, and $d_s = 5.5\sqrt{3}a_0$. (b) Probability for a valley flip in the scattering process (given by the total probability of transmission or reflection into the opposite valley, $T_{\text{inter}} + R_{\text{inter}}$) for a smoothed potential step along the armchair direction at the incident angle $\varphi = 70^\circ$ as a function of E . The remaining parameters are as in (a).

transition). For energies $E > V_0$, when this crossing does not take place anymore, intervalley scattering is suppressed, accordingly.

V. UNIFORM MAGNETIC FIELD

Now we turn to the effects of a perpendicular magnetic field $B_z(x, y)$ on \mathcal{T}_3 . In the homogeneous case, $B_z(x, y) = B_0$, Landau levels (LLs) appear,¹¹ which resemble the relativistic Landau splitting of graphene in their proportionality to $\omega_c \propto \sqrt{B_0}$, where $\omega_c = \sqrt{2}v_F/\ell_B$ is the cyclotron frequency and $\ell_B = \sqrt{c/(eB_0)}$ the magnetic length. However, the nonzero Landau energies for the \mathcal{T}_3 lattice are

$$E_n^{\mathcal{T}_3} = \pm \omega_c \sqrt{n - \frac{1}{2}} \quad \text{for } n \geq 1 \quad (21)$$

and differ crucially from their values of graphene given by $E_n^{\text{HCL}} = \pm \omega_c \sqrt{n}$. We mention that this latter spectrum is basically known from massless Dirac-Fermions¹⁹ moving at the velocity of light; it can be attributed to a Zeeman contribution $\pm ecB_0$ for the two spin helicities, according to which the relativistic LLs at positive energies take the values $E_{\{n-1\}} = \omega_c \sqrt{n - \frac{1}{2} \pm \frac{1}{2}}$. As a result, each LL exhibits a doubled Zeeman degeneracy with the exception of the zero-energy level E_0 , which remains nondegenerate.²⁰ The similar mathematical structure of the Dirac-Weyl equation for graphene causes $E_n = E_n^{\text{HCL}}$ together with only one pseudospin projection in the zeroth LL which is responsible for the anomalous Hall conductivity²⁰ of graphene, as observed in experiment.²¹ On the other hand, the spectrum (21) arises due to the *absence* of a pseudo-Zeeman contribution in the \mathcal{T}_3 case. It is a signature of the pseudospin 1 physics^{22–25} and has not yet appeared in other physical systems.

In Landau gauge, $\mathbf{A} = (-B_0 y, 0, 0)^T$, the LLs of \mathcal{T}_3 are given as

$$\psi_n = \frac{1}{\sqrt{2(2n-1)}} \begin{pmatrix} \sqrt{n-1} \phi_{n-2} \\ \text{sgn}(E_n) \sqrt{2n-1} \phi_{n-1} \\ \sqrt{n} \phi_n \end{pmatrix}, \quad n \geq 1, \quad (22)$$

where the ϕ_n are eigenstates of the harmonic oscillator at frequency ω_c and we define $\phi_{-1} \equiv 0$. While one half of the probability density resides on the hub sites, as expected from the lattice structure, the remaining half is shared unequally among the lattice sites A and B according to (22) for all $n \geq 1$ at finite magnetic field in the vicinity of the given K point. Again, this contrasts to graphene where A and B sublattices carry equal probability density for the nonzero LLs.

At zero energy two contributions add to the density of states: First, the zero-energy LL of degeneracy equal to the number of flux quanta penetrating the lattice which equals the degeneracy of all other LLs. The corresponding wave function,

$$\psi_0 = (0, 0, \phi_0)^T,$$

resembles the wave function of graphene's zeroth LL. On the other hand, there is the "nonmagnetic" pseudospin $S_p = 0$ topological level whose energy remains unaffected when a magnetic field is switched on. Its degeneracy equals the

number of elementary cells in the lattice and the corresponding wave functions read

$$\psi_n^{\text{top}} = \frac{1}{\sqrt{2n+1}} \begin{pmatrix} \sqrt{n+1} \phi_{n-1} \\ 0 \\ -\sqrt{n} \phi_{n+1} \end{pmatrix}, \quad n \geq 1.$$

VI. MAGNETIC BARRIER

From graphene is known⁷ that magnetic barriers can confine Dirac-Weyl fermions with zero transparency, contrary to electrostatic barriers. We consider a barrier parallel to the y axis of thickness d given by a space-dependent magnetic field perpendicular to the lattice plane,

$$B_z(x, y) = B_0 \Theta(d/2 - |x|), \quad (23)$$

described by a corresponding vector potential $\mathbf{A}(x) = \{0, A_y(x), 0\}$,

$$A_y = B_0 \begin{cases} -d/2 & x < -d/2, \\ x & \text{for } |x| \leq d/2, \\ d/2 & x > d/2. \end{cases}$$

Stationary states of the Hamiltonian (1) of the form (3) satisfy the set of coupled differential equations

$$\sqrt{2}\mathcal{E}\psi_A = -i\partial_x\psi_H - i\left(k_y + \frac{e\ell_B^2}{c}A_y(x)\right)\psi_H, \quad (24a)$$

$$\begin{aligned} \sqrt{2}\mathcal{E}\psi_H &= -i\partial_x\psi_A + i\left(k_y + \frac{e\ell_B^2}{c}A_y(x)\right)\psi_A \\ &\quad - i\partial_x\psi_B + i\left(k_y + \frac{e\ell_B^2}{c}A_y(x)\right)\psi_B, \end{aligned} \quad (24b)$$

$$\sqrt{2}\mathcal{E}\psi_B = -i\partial_x\psi_H + i\left(k_y + \frac{e\ell_B^2}{c}A_y(x)\right)\psi_H, \quad (24c)$$

where k_y is the transverse momentum. Here and in the following we have rescaled all quantities by using $\ell_B = \sqrt{c/(eB_0)}$ as the unit of length and $v_F/\ell_B = \omega_c/\sqrt{2}$ as the unit of energy, $\mathcal{E} = E/(v_F/\ell_B)$. The wave function left of the barrier is of the form (9) with $k_y = \mathcal{E} \sin(\varphi) + d/2$, where φ is again the angle of incidence. Conservation of momentum parallel to the barrier results in the condition

$$\sin(\varphi) + d/\mathcal{E} = \sin(\alpha) \quad (25)$$

so that the wave function on the right side of the barrier reads

$$\psi_{\text{III}}(x) = t \begin{pmatrix} e^{-i\alpha} \\ \sqrt{2}s \\ e^{i\alpha} \end{pmatrix} e^{iq_x x}, \quad (26)$$

with emergence angle α and final momentum in the x direction $q_x = \sin(\alpha)\mathcal{E}$. As in the case of graphene,⁷ the condition of momentum conservation in the y direction (25) cannot be fulfilled for sufficiently thick barriers, $d > 2\mathcal{E}$. Finally, the

wave function in the barrier region is given by

$$\psi_{\Pi}(x) = a \begin{pmatrix} \xi \mathcal{D}_{\eta+1}(\xi) - \mathcal{D}_{\eta}(\xi) \\ i\mathcal{E}\mathcal{D}_{\eta+1}(\xi) \\ -\mathcal{D}_{\eta}(\xi) \end{pmatrix} + b \begin{pmatrix} -\mathcal{D}_{1-\eta}(i\xi) \\ \mathcal{E}\mathcal{D}_{-\eta}(i\xi) \\ i\xi\mathcal{D}_{-\eta}(i\xi) - \mathcal{D}_{1-\eta}(i\xi) \end{pmatrix}, \quad (27)$$

where the \mathcal{D}_{η} are parabolic cylinder functions taken at argument $\xi = \sqrt{2}(k_y + x)$ and $\eta = (\mathcal{E}^2 + 1)/2$.

The transmission probability $T = |t|^2$ can be calculated straightforwardly by applying the boundary conditions (4). The exact result is lengthy and given in Appendix B; it is plotted in Fig. 6. The main features of this result can be understood within a semiclassical picture, according to which electrons perform cyclotron orbits of radius $r_0 = (E/v_F)\ell_B^2$, inversely proportional to the strength of the magnetic field.²⁶ The semiclassical approximation is justified for $r_0 \gg \ell_B$. Figure 7(a) illustrates three possible cases. (i) For an incident angle $\varphi_1 > \varphi_{\text{crit}}$ larger than a critical angle the particle reaches the opposite boundary and leaves with transmission probability $T = 1$. (ii) At the value of the critical angle, $\varphi_2 = \varphi_{\text{crit}}$, the particle leaves the barrier region parallel to the barrier. (iii) For angles $\varphi_3 < \varphi_{\text{crit}}$, the particle makes the full turn under the barrier and is perfectly reflected, $T = 0$. In this semiclassical picture the critical angle φ_{crit} is obtained from

$$d_{\text{max}} = \mathcal{E}(1 + \sin(\varphi)), \quad (28)$$

which relates the maximal barrier width d_{max} that can be overcome at incident angle φ and energy \mathcal{E} . In fact, the curves

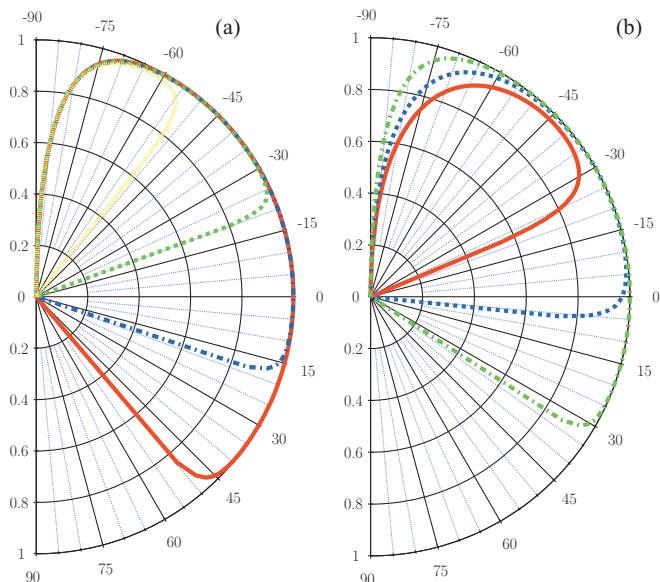


FIG. 6. (Color online) The transmission probability T as a function of the injection angle for a magnetic barrier of width d and at the energy \mathcal{E} for the \mathcal{T}_3 lattice. In panel (a) the parameters are $\mathcal{E} = 4.5$, $d = 1$ (red solid line), $d = 3$ (blue dot-dashed line), $d = 6$ (green dashed line), and $d = 8$ (yellow dotted line). In panel (b) the parameters are $d = 2.2$, $\mathcal{E} = 1.6$ (red solid line), $\mathcal{E} = 2.5$ (blue dotted line), and $\mathcal{E} = 5$ (green dot-dashed line).

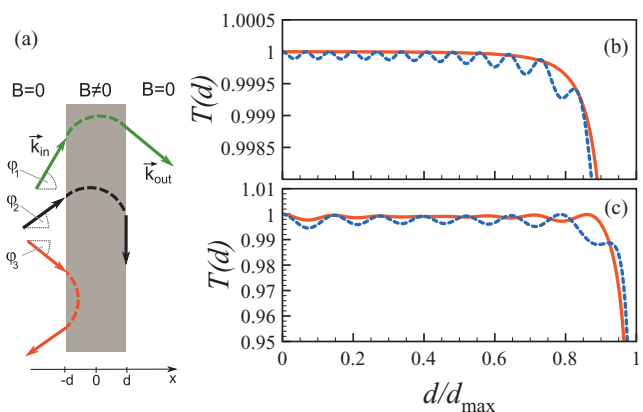


FIG. 7. (Color online) (a) Sketch of possible semiclassical trajectories of particles entering the barrier region at different incident angles, as explained in the text. Panels (b) and (c): transmission probability as a function of the normalized width of the barrier d/d_{max} for the \mathcal{T}_3 lattice (solid red lines) and HCL (dashed blue lines). Panel (b): $\mathcal{E} = 6.9$ and $\varphi = -\pi/4$. Panel (c): $\mathcal{E} = 3.9$ and $\varphi = 0$.

obtained for the HCL, taking the results of Ref. 7, are almost identical when plotted on the scale of Fig. 6, confirming the semiclassical point of view also for graphene.

In Figs. 7(b) and 7(c) we show the transmission probabilities for both lattices as a function of the normalized magnetic barrier width d/d_{max} at different angles and energies where the transmission for $d < d_{\text{max}}$ is very close to unity. However, the \mathcal{T}_3 lattice reveals as more transparent than the HCL, so that the latter is seen to develop quantum interference oscillations as a function of the barrier width.

VII. SUMMARY

We have analyzed transmission properties of barriers on the \mathcal{T}_3 lattice in the low-energy approximation using the Dirac-like Hamiltonian (1). First we derived and discussed the boundary conditions for the wave function at a given interface. Wave function components of rim sites can be discontinuous, whereas the hub component is continuous; this can be well understood in terms of the probability currents perpendicular and parallel to the barrier. An electrostatic barrier on \mathcal{T}_3 has enhanced transparency compared to the HCL, which is a direct consequence of the specific boundary conditions of the $S = 1$ Hamiltonian. When the energy of the incoming wave equals half the barrier height, we even obtain perfect transmission independently of the incident angle. This “super Klein-tunneling” makes it possible to use a np junction in order to design a perfect focusing lens without loss; this must be contrasted to the 50% of loss of HCL in the same configuration. Therefore, we believe that \mathcal{T}_3 can be interesting from the point of view of electron focusing and photonic crystals.²⁷

Furthermore, we have confirmed numerically the analytical predictions about the super Klein tunneling via a lattice Green’s function method. In addition, we have investigated numerically the influence of the intervalley scattering in the \mathcal{T}_3 lattice compared to the HCL and identified the crucial role of the flat band.

For a uniform magnetic field we have discussed the LLs; their energies differ from nonrelativistic and from relativistic systems known so far. \mathcal{T}_3 exhibits a high density of states at zero energy due to contributions from a zeroth LL and a topological level.

Finally, we have investigated the transmission through a magnetic barrier in \mathcal{T}_3 which is found to be similar compared to the case of the HCL. Both cases can be understood in a simple semiclassical picture from circular cyclotron orbits under the barrier. Magnetic barriers of sufficient width can be used to confine particles in the \mathcal{T}_3 lattice.

ACKNOWLEDGMENTS

We acknowledge A. De Martino, H. Grabert, V. Krückl, and P. Recher for useful discussions. The work of D.B. is supported by the Excellence Initiative of the German Federal and State Governments.

APPENDIX A: ON THE BOUNDARY CONDITIONS

We can obtain the boundary conditions from the low-energy wave Eq. (1) together with the conservation of the probability current. The former states that $-i\partial_t\Psi = \mathcal{H}\Psi$, the latter that $\partial_t|\Psi|^2 = -\nabla \cdot \mathbf{j}$.

For the case of graphene and with the two-component spinor $\Psi = (\psi_A, \psi_B)^T$ we get the following condition:

$$\partial_t|\Psi|^2 = (\partial_t\Psi)\Psi^* + (\partial_t\Psi^*)\Psi \quad (\text{A1a})$$

$$= -2v_F\partial_x\text{Re}[\psi_A^*\psi_B] - 2v_F\partial_y\text{Im}[\psi_A^*\psi_B] \quad (\text{A1b})$$

$$= -(\partial_x j_x + \partial_y j_y). \quad (\text{A1c})$$

Therefore, we can identify the two components of the probability current

$$\mathbf{j} = 2v_F(\text{Re}[\psi_A^*\psi_B], \text{Im}[\psi_A^*\psi_B])^T. \quad (\text{A2})$$

At an interface we require the continuity of the probability current j_x perpendicular to the boundary. This implies for the HCL the continuity of the two components of the wave function Ψ at the interface.

On the other hand, for the case of the \mathcal{T}_3 lattice and the three-component spinor $\Psi = (\psi_A, \psi_H, \psi_B)^T$, we get

$$\partial_t|\Psi|^2 = (\partial_t\Psi)\Psi^* + (\partial_t\Psi^*)\Psi \quad (\text{A3a})$$

$$= -\sqrt{2}v_F\partial_x\text{Re}[\psi_H^*(\psi_A + \psi_B)] + \sqrt{2}v_F\partial_y\text{Im}[\psi_H^*(\psi_A - \psi_B)] \quad (\text{A3b})$$

$$= -(\partial_x j_x + \partial_y j_y). \quad (\text{A3c})$$

In this case the probability current is defined by

$$\mathbf{j} = \sqrt{2}v_F(\text{Re}[\psi_H^*(\psi_A + \psi_B)], \text{Im}[\psi_H^*(\psi_A - \psi_B)])^T. \quad (\text{A4})$$

The conservation of the x component of the current corresponds indeed to Eqs. (4).

APPENDIX B: TRANSMISSION PROBABILITY THROUGH A MAGNETIC BARRIER

The transmission probability through the magnetic barrier discussed in Sec. VI is obtained by imposing the matching conditions (4) at $x = \pm d/2$ that after basic algebraic manipulation read

$$a\mathcal{D}'_{\eta-1}(\xi_-) + b\mathcal{D}'_{-\eta}(i\xi_-) = \cos(\varphi)(e^{-i\frac{d}{2}k_x} + re^{i\frac{d}{2}k_x})e^{ik_y y},$$

$$a\mathcal{D}'_{\eta-1}(\xi_+) + b\mathcal{D}'_{-\eta}(i\xi_+) = t \cos(\alpha)e^{i(\frac{d}{2}q_x + q_y y)},$$

$$ia\mathcal{D}_{\eta-1}(\xi_-) + b\mathcal{D}_{-\eta}(i\xi_-) = \frac{\sqrt{2}}{|\mathcal{E}|}(e^{-i\frac{d}{2}k_x} - re^{i\frac{d}{2}k_x})e^{ik_y y},$$

$$ia\mathcal{D}_{\eta-1}(\xi_+) + b\mathcal{D}_{-\eta}(i\xi_+) = \frac{\sqrt{2}}{|\mathcal{E}|}te^{i(\frac{d}{2}q_x + q_y y)},$$

with $\xi_{\pm} = \sqrt{2}(k_y \pm d/2)$. The prime denotes the derivative with respect to the coordinate. The expression for the resulting transmission is lengthy. It can be written in a more compact form when introducing the function

$$G_{\eta}(\xi_1, \xi_2) := \mathcal{D}_{-\eta}(i\xi_1)\mathcal{D}_{\eta-1}(\xi_2) - \mathcal{D}_{\eta-1}(\xi_1)\mathcal{D}_{-\eta}(i\xi_2) \quad (\text{B1})$$

and its derivatives $\partial_{1/2}G_{\eta}$ with respect to the first/second argument. Then the final result reads

$$T = \left| \frac{2\sqrt{2}|\mathcal{E}| \cos(\varphi)\partial_1 G_{\eta}(\xi_+, \xi_+)}{\mathcal{E}^2 G_{\eta}(\xi_+, \xi_-) + i\sqrt{2}|\mathcal{E}|[\cos(\alpha)\partial_2 G_{\eta}(\xi_+, \xi_-) - \cos(\varphi)\partial_1 G_{\eta}(\xi_+, \xi_-)] + 2\partial_1 \partial_2 G_{\eta}(\xi_+, \xi_-)} \right|^2. \quad (\text{B2})$$

*urban@physik.uni-freiburg.de

¹A. H. Castro Neto, F. Guinea, N. M. R. Peres, K. S. Novoselov, and A. K. Geim, *Rev. Mod. Phys.* **81**, 109 (2009).

²C. W. J. Beenakker, *Rev. Mod. Phys.* **80**, 1337 (2008).

³D. P. Di Vincenzo and E. J. Mele, *Phys. Rev. B* **29**, 1685 (1984).

⁴M. I. Katsnelson, K. S. Novoselov, and A. K. Geim, *Nat. Phys.* **2**, 620 (2006).

⁵O. Klein, *Z. Phys.* **53**, 157 (1929).

⁶N. Stander, B. Huard, and D. Goldhaber-Gordon, *Phys. Rev. Lett.* **102**, 026807 (2009); A. F. Young and P. Kim, *Nat. Phys.* **5**, 222 (2009); *Annu. Rev. Condens. Matter Phys.* **2**, 101 (2011).

⁷A. De Martino, L. Dell'Anna, and R. Egger, *Phys. Rev. Lett.* **98**, 066802 (2007).

⁸T. K. Ghosh, A. De Martino, W. Häusler, L. Dell'Anna, and R. Egger, *Phys. Rev. B* **77**, 081404(R) (2008); W. Häusler, A. De Martino, T. K. Ghosh, and R. Egger, *ibid.* **78**, 165402 (2008); L. Dell'Anna and A. De Martino, *ibid.* **80**, 155416 (2009); W. Häusler and R. Egger, *ibid.* **80**, 161402(R) (2009).

⁹B. Sutherland, *Phys. Rev. B* **34**, 5208 (1986).

¹⁰J. Vidal, R. Mosseri, and B. Douçot, *Phys. Rev. Lett.* **81**, 5888 (1998); J. Vidal, G. Montambaux, and B. Douçot, *Phys. Rev. B* **62**, 16294 (2000); D. Bercioux, M. Governale, V. Cataudella, and V. M. Ramaglia, *ibid.* **72**, 075305 (2005).

- ¹¹D. Bercioux, D. F. Urban, H. Grabert, and W. Häusler, *Phys. Rev. A* **80**, 063603 (2009).
- ¹²D. Bercioux, N. Goldman, and D. F. Urban, *Phys. Rev. A* **83**, 023609 (2011).
- ¹³R. Shen, L. B. Shao, Baigeng Wang, and D. Y. Xing, *Phys. Rev. B* **81**, 041410(R) (2010).
- ¹⁴T. Ando, T. Nakanishi, and R. Saito, *J. Phys. Soc. Jpn.* **67**, 2857 (1998); N. H. Shon and T. Ando, *ibid.* **67**, 2421 (1998); T. Ando, Y. Zheng, and H. Suzuura, *ibid.* **71**, 1318 (2002); I. L. Aleiner and K. B. Efetov, *Phys. Rev. Lett.* **97**, 236801 (2006); K. Ziegler, *ibid.* **97**, 266802 (2006); *Phys. Rev. B* **75**, 233407 (2007); J. Cserti, *ibid.* **75**, 033405 (2007); G. Schubert, J. Schleede, and H. Fehske, *ibid.* **79**, 235116 (2009).
- ¹⁵V. V. Cheianov, V. Fal'ko, and B. L. Altshuler, *Science* **315**, 1252 (2007).
- ¹⁶Formally, the problem is then equivalent to a nanotube geometry with a flux of $k_{\parallel}|t|\Phi_0$ inside the tube.
- ¹⁷M. Wimmer and K. Richter, *J. Comput. Phys.* **228**, 8548 (2009).
- ¹⁸C. Tang, Y. Zheng, G. Li, and L. Li, *Solid State Commun.* **148**, 455 (2008).
- ¹⁹I. I. Rabi, *Z. Phys.* **49**, 507 (1928); M. H. Johnson and B. A. Lippmann, *Phys. Rev.* **76**, 828 (1949).
- ²⁰V. P. Gusynin and S. G. Sharapov, *Phys. Rev. Lett.* **95**, 146801 (2005).
- ²¹K. S. Novoselov, A. K. Geim, S. V. Morozov, D. Jiang, M. I. Katsnelson, I. V. Grigorieva, S. V. Dubonos, and A. A. Firsov, *Nature (London)* **438**, 197 (2005); Y. Zhang, Y. Tan, H. L. Stormer, and P. Kim, *ibid.* **438**, 201 (2005); K. S. Novoselov, Z. Jiang, Y. Zhang, S. V. Morozov, H. L. Stormer, U. Zeitler, J. C. Maan, G. S. Boebinger, P. Kim, and A. K. Geim, *Science* **315**, 1379 (2007); S. Masubuchi, K. Suga, M. Ono, K. Kindo, S. Takeyama, and T. Machida, *J. Phys. Soc. Jpn.* **77**, 113707 (2008).
- ²²D. Green, L. Santos, and C. Chamon, *Phys. Rev. B* **82**, 075104 (2010).
- ²³Z. Lan, N. Goldman, A. Bermudez, W. Lu, and P. Ohberg, e-print [arXiv:1102.5283v1](https://arxiv.org/abs/1102.5283v1) (to be published).
- ²⁴N. Goldman, D. F. Urban, and D. Bercioux, *Phys. Rev. A* **83**, 063601 (2011).
- ²⁵B. Dóra, J. Kailasvuori, and R. Moessner, e-print [arXiv:1104.0416v2](https://arxiv.org/abs/1104.0416v2) (to be published).
- ²⁶J. Schliemann, *New J. Phys.* **10**, 043024 (2008).
- ²⁷J. D. Joannopoulos, S. G. Johnson, J. N. Winn, and R. D. Meade, *Photonic Crystals: Molding the Flow of Light*, 2nd ed. (Princeton University Press, Princeton, NJ, 2008).