

## **Diagnostic accuracy and post-procedural complications associated with ultrasound-guided core needle biopsy in the preoperative evaluation of parotid tumors**

**Monika Jering, Marcel Mayer, Rubens Thölken, Stefan Schiele, Andrea Maccagno, Johannes Zenk**

### **Angaben zur Veröffentlichung / Publication details:**

Jering, Monika, Marcel Mayer, Rubens Thölken, Stefan Schiele, Andrea Maccagno, and Johannes Zenk. 2021. "Diagnostic accuracy and post-procedural complications associated with ultrasound-guided core needle biopsy in the preoperative evaluation of parotid tumors." *Head and Neck Pathology* 16: 651-56. <https://doi.org/10.1007/s12105-021-01401-w>.



# Diagnostic Accuracy and Post-Procedural Complications Associated with Ultrasound-Guided Core Needle Biopsy in the Preoperative Evaluation of Parotid Tumors

Monika Jering<sup>1</sup> · Marcel Mayer<sup>2</sup> · Rubens Thölken<sup>1</sup> · Stefan Schiele<sup>3</sup> · Andrea Maccagno<sup>4</sup> · Johannes Zenk<sup>1</sup>

Received: 5 November 2021 / Accepted: 1 December 2021 / Published online: 17 December 2021  
© The Author(s) 2021

## Abstract

Correct diagnosis of a parotid neoplasm based on histology preoperatively is of utmost importance in order to guide patient management. The aim of this study was to evaluate the diagnostic accuracy of an ultrasound-guided core needle biopsy of a parotid lesion and to describe associated post-procedural complications. A retrospective study was conducted between January 2015 and March 2021 of all patients who were referred to a tertiary care center for evaluation of a parotid lesion and who underwent core needle biopsy due to high-risk features or when malignancy was suspected on clinical examination or ultrasonography. Patient characteristics, histological findings, and post-procedural complications were recorded and evaluated. Among 890 patients referred for evaluation of a parotid lesion, in 138 patients a core needle biopsy was undertaken. On the basis of core needle biopsy findings, 11 lymphomas and 82 non-lymphoma malignancies were diagnosed in the parotid gland. The sensitivity of the core needle biopsy predicting the accurate tumor type was 97.56% (95% CI 91.47–99.70%) and the specificity 94.64% (95% CI 85.13–98.88%). The accuracy for the correct histopathological diagnosis was 93.48% (95% CI 87.98–96.97%). Post-procedural minor complications occurred in 19 patients (13.8%). In conclusion, a core needle biopsy can identify malignancy in the parotid gland with high sensitivity and specificity in a safe manner and therefore guide surgical treatment.

**Keywords** Core needle biopsy · Neoplasm · Parotid gland · Parotid malignancy · Facial nerve

## Introduction

Salivary gland tumors comprise a wide range of different tumor entities of benign and malignant tumor type [1]. A malignant tumor occurs in 20% of all lesions found in the parotid gland [2–4]. Although malignancy is rare in the

parotid gland, it is of the utmost importance to identify the tumor type preoperatively in order to guide further treatment. The close relationship of the parotid gland to the facial nerve and the varying surgical approaches can make the treatment of a parotid mass challenging. Repeat surgery of the parotid gland should be avoided due to scarring and therefore this presents a high risk for facial nerve injury.

The physical examination of a patient with a parotid lesion cannot reliably distinguish benign from malignant masses as signs suggestive of malignancy such as facial nerve palsy may be absent [5, 6]. Ultrasound of the salivary gland is routinely used to detect malignancy of the parotid gland and provides the surgeon with valuable information about tumor size, location, and morphology of the lesion [7, 8]. However, ultrasound needs to be performed by a skilled and experienced sonographer, and malignancy cannot be determined in all cases by this non-invasive method [9].

Ultrasound-guided core needle biopsy (CNB) seems to be a method safe to differentiate between a malignant and benign parotid lesion [10–12]. CNB is only performed at

✉ Monika Jering  
Monika.Jering@uk-augsburg.de

<sup>1</sup> Department of Otolaryngology, Head and Neck Surgery, Medical Faculty, University Hospital Augsburg, University of Augsburg, Sauerbruchstraße 6, 86156 Augsburg, Germany

<sup>2</sup> Department of Otolaryngology, Head and Neck Surgery, Medical Faculty, University of Cologne, Kerpener Straße 62, 50931 Cologne, Germany

<sup>3</sup> Institute of Mathematics, University of Augsburg, Universitätsstraße 2, 86159 Augsburg, Germany

<sup>4</sup> Institute of General Pathology and Molecular Diagnostics, Medical Faculty, University of Augsburg, Stenglinstraße 2, 86156 Augsburg, Germany

a few salivary gland centers. Previous studies have shown that compared with other less invasive methods such as fine-needle aspiration (FNA), CNB has higher sensitivity (0.94) and specificity (0.98) [10, 13]. For FNA, the sensitivity and specificity vary and were reported 70.0–80.0% and 87.5–97.0% in distinguishing between a malignant and benign parotid lesion [1, 14–17]. Establishing an accurate tissue diagnosis preoperatively is essential in guiding operative or non-operative treatment of the parotid tumor and for prognostication [18].

CNB is described to be a relatively safe procedure with a low complication rate and a higher diagnostic yield when compared with FNA [10]. The most commonly reported complication is a hematoma in 0.5% [10, 13], and tumor cell seeding from the biopsy seems to be rare [1, 19].

The aim of this study was to investigate the diagnostic accuracy in predicting malignancy of a CNB and the associated post-procedural complications of this minimally invasive method in patients referred to a university hospital specialized in salivary gland diseases in whom suspicion for malignancy arose based on physical examination or ultrasonographic findings.

## Materials and Methods

In this retrospective study, we included all patients who were referred to the university hospital Augsburg, Germany, between January 2015 and March 2021 for evaluation of a parotid mass and who underwent core needle biopsy. The study was approved by the local ethics committee (2017/20) and all patients included in this study provided written informed consent. All patients underwent a preoperative ultrasound of the affected parotid gland, which was performed by an experienced clinical investigator using Acuson S2000 (Siemens Medical Solution, Erlangen, Germany) and a linear transducer (4.0–9.0 MHz). The size, location, echogenicity, and configuration of the parotid lesion were assessed on ultrasound. All patients who were eligible for a surgical intervention were operated on. A core needle biopsy of the parotid mass was performed if one of the following criteria was met: suspected malignancy on ultrasound, a lesion within the parotid gland along with new occurrence of facial palsy, rapid increase in the size of a parotid lesion, a painful parotid lesion, and known malignancy in the head and neck area. Malignancy on ultrasound was suspected when tumor margins were inhomogeneous, in case of visible necrosis, or lymph node metastases. CNB was performed under ultrasound guidance and at least three samples were obtained with a single-use, automated spring-loaded core needle (14 or 16 Gauge) using sterile technique after administration of local anesthesia and incision of the skin. The tissue was evaluated by paraffin section histology.

The histopathologic workup included fixing in buffered 4% formalin, usually overnight. Hematoxylin and eosin (HE) and Alcian-Periodic acid Schiff (Alcian-PAS) stained slides served as the basis for the histological diagnosis. Dependent on the results of conventional stains evaluation, further staining and advanced tissue-based analyses like immunohistochemistry, fluorescence in situ hybridization, or molecular analyses were performed. Histopathological results of the CNB were interpreted by two board certified pathologists. Patients who did not undergo an ultrasound-guided CNB of the parotid gland ( $n=752$ ) were excluded from this study. Data were extracted from the local database. Patient characteristics, histopathological findings, the clinical course, and post-procedural complications were collected and evaluated. All patients with oral anticoagulation were included in this study. A medication with acetylsalicylic acid was not paused, whereas any other anticoagulants were stopped for at least five days.

Descriptive statistical analyses were performed, and the sensitivity and specificity were calculated. Sensitivity and specificity were calculated by  $2 \times 2$  tables, and confidence intervals were analyzed by the Clopper–Pearson interval. Data are presented as mean (standard deviation) or median (interquartile range) for continuous variables, and proportions for categorical variables.

Statistical analyses were performed using SPSS (IBM SPSS Statistics 25.0, IBM, New York City, NY, USA).

## Results

Overall, 890 patients were evaluated for a parotid gland lesion during the course of the study and out of this patient cohort only 138 (15.5%) patients underwent CNB owing to concerning features on clinical examination and were thus included in this study. Out of these 138 patients, the majority of patients were male (72.5%), and the mean age of the study population was  $76.2 \pm 11.8$  years for malignant tumors and  $64.2 \pm 16.6$  years for benign lesions (Table 1). On the basis of CNB malignancy was identified in 82 (59.4%) patients and a benign tumor was diagnosed in 56 (40.6%) patients. The most common malignant tumor based on histopathology was a metastasis of a cutaneous squamous cell carcinoma (SCC), which was detected in 44 patients (53.7%). The most commonly diagnosed benign lesion was a Warthin's tumor (WT) in 30 patients (21.7%).

Table 1 shows the observed post-procedural complications. The most common complication was a post-procedural local infection, which occurred in ten patients (7.2%). All patients with this complication were treated with an oral antibiotic and the need for surgical intervention did not arise. A post-procedural hematoma occurred in seven patients (5.0%), all of whom were prescribed oral anticoagulants such

**Table 1** Baseline characteristics and post-procedural complications following CNB according to tumor type

	Benign tumor n = 56	Malignant tumor n = 82
Age (years)	64.2 ± 16.6	76.2 ± 11.8
Sex		
Male (n = 100)	40 (40.0%)	60 (60.0%)
Female (n = 38)	16 (42.1%)	22 (57.9%)
Post-procedural complications		
Hematoma (n = 7)	3 (42.9%)	4 (57.1%)
Seroma (n = 4)	4 (100.0%)	0 (0%)
Infection (n = 10)	6 (60.0%)	4 (40.0%)
Facial paralysis (n = 2)	0 (0.0%)	2 (100.0%)

Values are reported as frequency (%) or mean ± standard deviation

as acetylsalicylic acid. These hematomas were managed conservatively with the application of a pressure dressing and surgical evacuation was not necessary. In an additional two patients the post-procedural hematoma became infected and was successfully treated with antibiotics. Temporary facial nerve palsy due to local anesthesia, immediately after injection of the anesthetic was recorded as a complication in two patients and spontaneously resolved within two hours of the intervention. No permanent facial palsy occurred.

Among the 82 patients who were diagnosed with a malignant tumor 15 different entities were identified (Table 2). Among the 56 patients who were diagnosed with a benign tumor 12 different benign tumor entities were diagnosed on the basis of CNB (Table 2).

In eleven patients a lymphoma was identified on the basis of CNB, thus obviating the need for additional surgical intervention. In all cases the subclassification of the lymphoma was successful. In three patients, two synchronous malignancies were found on CNB, and these were verified post-operatively by the definitive histopathological results from the surgical specimen: two patients with a lymphoma and SCC and one patient with a myoepithelial carcinoma and SCC. The specimen obtained from CNB was insufficient to establish the correct histopathological diagnosis in nine patients (6.0%). Therefore, these patients had to undergo another CNB, open biopsy, or intraoperatively a frozen section evaluation. In these cases, we found insufficient material or necrotic tissue, which could not lead to the correct diagnosis. In five patients (3.6%) a benign tumor could not correctly be specified. In two cases malignancy was not correctly identified and these patients had to undergo an open biopsy, as malignancy was preoperatively suspected. In three cases malignancy could not be excluded by CNB. These patients also underwent an open biopsy (Table 3). In the remaining 124 patients (89.9%) the histopathological results from the CNB were sufficient to yield a diagnosis. Figure 1

**Table 2** Histopathological types of tumor type

	Number of patients (n)
<b>Malignant tumors</b>	
Metastasis of squamous cell carcinoma	44
Lymphoma	11
Salivary duct carcinoma	5
Malignant melanoma	4
Adenoid cystic carcinoma	3
Mucoepidermoid carcinoma	3
Merkel cell carcinoma	3
Myoepithelial carcinoma	3
Basal cell adenocarcinoma	2
Metastatic renal cell carcinoma	2
Adenocarcinoma	1
Acinar cell carcinoma	1
Round cell sarcoma	1
Carcinoma ex-pleomorphic adenoma	1
Metastatic breast cancer	1
<b>Benign tumors</b>	
Warthin tumor	30
Pleomorphic adenoma	7
Basal cell adenoma	4
Cyst	3
Chronic sialadenitis	3
Sclerosing tissue	3
Sarcoidosis	1
Lipoma	1
Chondrite lesion	1
Sjögren’s syndrome	1
Granulomatous lymphadenopathy	1
Mononucleosis	1

All tumor dignities are counted by occurrence. Each tumor type was calculated individually

shows an example of an ultrasound-guided core needle biopsy. Figures 2 and 3 display histopathological findings of core needle biopsies of a SCC and a WT.

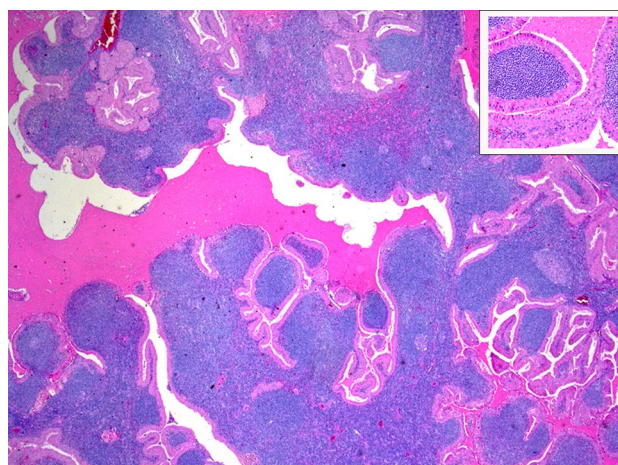
**Table 3** Accuracy of a core needle biopsy in determining the tumor type

	Malignant tumor	Benign tumor	
Malignant tumor	80	3	83
Benign tumor	2	53	55
Number of patients	82	56	138

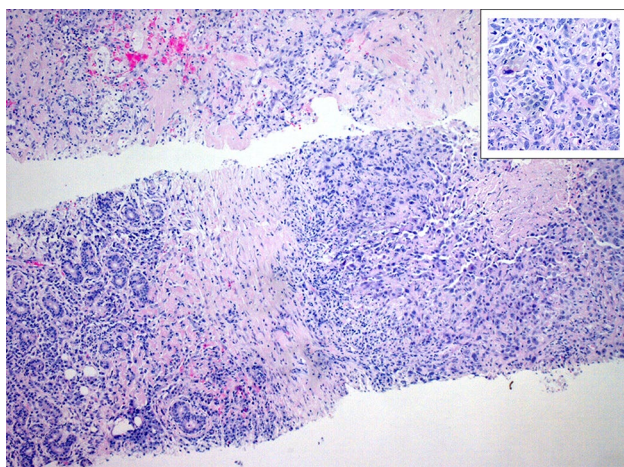
This 2×2 table demonstrates the predictive ability of a core needle biopsy. In three cases the tumor type could not be determined, and a second biopsy was recommended by the pathologist



**Fig. 1** Ultrasound-guided core needle biopsy of a parotid tumor. Representative B-mode ultrasound image of a parotid gland neoplasm (indicated by a star). The arrows point at the core needle (CN). The glandula parotis is marked by GP



**Fig. 3** Histopathological results of a core needle biopsy of a Warthin tumor. Figure shows the histopathological findings (12.5× magnification) of a core needle biopsy of a Warthin tumor. Tissue with double layer of epithelial cells lying on dense lymphoid stroma



**Fig. 2** Histopathological results of a core needle biopsy of a squamous cell carcinoma. This histopathological finding (40× magnification) of a core needle biopsy of a lesion of the parotid gland demonstrates on the left-hand side small amounts of regular salivary tissue, adjacently the poorly differentiated squamous cell carcinoma

The sensitivity of a CNB in this study population predicting the accurate tumor type and correct tumor differentiation was 97.56% (95% CI 91.47–99.70%) and the specificity 94.64% (95% CI 85.13–98.88%). The accuracy of the CNB predicting the correct histopathological diagnosis and tumor type was 93.48% (95% CI 87.98–96.97%).

## Discussion

Due to the rarity of malignant parotid gland tumors and their diversity and morphologic complexity, it is essential to identify the tumor type preoperatively when malignancy is suspected in order to avoid repeat surgery with its associated increased risk of facial nerve palsy [20]. Furthermore, the correct histopathological diagnosis can help guide the timing of the surgical intervention and inform non-surgical management. Additionally, in elderly patients or patients with multiple comorbidities in whom a surgical intervention may carry a high risk a histopathological examination can be useful in order to inform further treatment options. An ultrasound-guided CNB provides parotid tissue to grade the tumor pathology. As the prognosis of parotid malignancy varies by tumor type, establishing the correct diagnosis based on tissue is essential to individualize treatment decisions [21]. In patients with high-grade malignancy a more radical surgery needs to be performed, which carries the risk of facial nerve palsy. Conversely, in patients with low-grade malignancy a more conservative surgical approach can be chosen, and the facial nerve can be preserved, if the nerve is not infiltrated by the tumor [5].

In this study, we showed that ultrasound-guided CNB could determine the tumor type of a parotid neoplasm with a low rate of post-procedural complications and guide further treatment, as the histological architecture can be evaluated from the CNB specimen and subtyping of lymphoma is possible. In the case of a histologically confirmed lymphoma, an unnecessary surgical intervention may be avoided if the diagnosis is established on CNB and the correct treatment may be promptly instituted. In this study, all patients with

a diagnosed lymphoma were referred to the oncologist to initiate the correct treatment.

Reported complication rates associated with CNB are low. Kim et al. investigated 1,315 CNB of parotid lesions and showed that tumor cell seeding did not occur in any case [10]. Congruent with these findings, the reported rate of tumor seeding is very low in other studies and fear thereof should therefore not be a barrier to performing a CNB if indicated [22, 23]. Similarly, in our study, tumor cell seeding was not observed after performing a CNB at our institution. This was evaluated by regular follow-up visits.

The relatively high rate of post-procedural hematomas observed in our study might be due to the use of a large-sized needle (14–16 Gauge) and the high prevalence of oral anticoagulant use among the study population. The anticoagulant therapy was continued, and the hematoma was resorbed in all cases. In all cases, symptoms resolved with conservative management and surgical intervention was not necessary, nor did this complication prolong the hospital stay. Permanent facial palsy with nerve damage did not occur in our study, and other studies describe this complication to be extremely rare [24, 25].

The findings of our study should be interpreted within the context of the limitations of a retrospective study conducted at a single tertiary care center. A limitation to this study is the exclusion of a high number of patients due to missing clinical and sonographic signs of malignancy. Another limitation to this study is that low-grade carcinoma could not be identified preoperatively because of missing clinical and sonographic signs of malignancy. Thus, a CNB was not performed and these patients were not included in this retrospective study. Another limitation to this study is the varying follow-up period ranging from two to 74 months. A tumor cell seeding could not be securely excluded. Furthermore, only CNB was performed in this study, and findings were not compared against FNA. Although FNA carries a lower risk of complications, insufficient aspiration of tissue can limit the ability to differentiate between a benign and malignant neoplasm or yield a non-diagnostic sample, as demonstrated in previous studies [24, 26]. In comparison to CNB, FNA has lower sensitivity and specificity in characterizing the parotid gland tumor [1]. In addition, the results of a FNA have to be evaluated by an on-site cytologist, who may not be available in every hospital setting to make an accurate diagnosis [27, 28].

The goal of this study was to investigate the diagnostic accuracy of a CNB in the evaluation of a parotid lesion in patients with high-risk features and to describe the complications after CNB at a large salivary gland center. Additionally, we investigated the accuracy of CNB in predicting the correct histopathological diagnosis. We demonstrated that CNB could correctly determine the histopathological diagnoses in many cases, as the tissue architecture is preserved

[11]. Moreover, the number of nondiagnostic specimens was low. This cost-effective intervention is safe with a low rate of serious post-procedural complications and is less invasive than open surgical biopsy comfort. However, a CNB should be performed by an experienced clinician in order to guarantee a high-quality biopsy and thereby facilitate the histopathological examination. Furthermore, patient treatment can be optimized and adjusted preoperatively on the basis of the histologic findings.

## Conclusion

In conclusion, this study demonstrated that a CNB has a high sensitivity and specificity in the diagnosis of salivary gland tumors in a patient population in whom malignancy is suspected. If malignancy is suspected preoperatively, a CNB should be performed in order to obtain a histological specimen. The procedure is simple, safe, and fast. The risk of post-procedural complications is low. Further treatment can be adapted to the patients' needs and the perioperative risk for facial nerve palsy can be minimized. In the future we plan a prospective study including all patients presenting with a parotid mass and performing a CNB on all patients.

**Acknowledgements** The authors would like to thank Professor Dr. Bruno Märkl and Dr. Tina Schaller from the Department of General Pathology and Molecular Diagnostics, Augsburg for the contribution of the histopathological slides and their support.

**Funding** Open Access funding enabled and organized by Projekt DEAL. No funding was received for conducting this study.

**Data Availability** Data was generated at the University hospital Augsburg, Germany. The data that support the findings of this study are available on request from the corresponding author.

**Code Availability** Not applicable.

## Declarations

**Conflict of interest** The authors have no conflict of interest to declare that are relevant to the content of this article.

**Ethical Approval** Approval was obtained from the ethics committee of University hospital Augsburg. The procedures used in this study are adhere to the tenets of the Declaration of Helsinki (2017/20).

**Consent to Participate** Written informed consent was obtained from all individual participants included in the study.

**Consent for Publication** Not applicable.

**Open Access** This article is licensed under a Creative Commons Attribution 4.0 International License, which permits use, sharing, adaptation, distribution and reproduction in any medium or format, as long as you give appropriate credit to the original author(s) and the source,

provide a link to the Creative Commons licence, and indicate if changes were made. The images or other third party material in this article are included in the article's Creative Commons licence, unless indicated otherwise in a credit line to the material. If material is not included in the article's Creative Commons licence and your intended use is not permitted by statutory regulation or exceeds the permitted use, you will need to obtain permission directly from the copyright holder. To view a copy of this licence, visit <http://creativecommons.org/licenses/by/4.0/>.

## References

- Zbaren P, Triantafyllou A, Devaney KO, Poorten VV, Hellquist H, Rinaldo A, Ferlito A. Preoperative diagnostic of parotid gland neoplasms: fine-needle aspiration cytology or core needle biopsy? *Eur Arch Otorhinolaryngol.* 2018;275(11):2609–13.
- Maahs GS, Oppermann Pde O, Maahs LG, Machado Filho G, Ronchi AD. Parotid gland tumors: a retrospective study of 154 patients. *Braz J Otorhinolaryngol.* 2015;81(3):301–6.
- Lin CC, Tsai MH, Huang CC, Hua CH, Tseng HC, Huang ST. Parotid tumors: a 10-year experience. *Am J Otolaryngol.* 2008;29(2):94–100.
- Mayer M, Thoelken R, Jering M, Markl B, Zenk J. Metastases of cutaneous squamous cell carcinoma seem to be the most frequent malignancies in the parotid gland: a hospital-based study from a salivary gland center. *Head Neck Pathol.* 2021. <https://doi.org/10.1007/s12105-021-01294-9>.
- Omura S, Kawata R, Higashino M, Nishikawa S, Terada T, Haginomori SI, Kurisu Y, Hirose Y. Challenges with preoperative diagnosis of low/intermediate-grade carcinoma of the parotid gland: single-center study of 112 patients. *Eur Arch Otorhinolaryngol.* 2020;277(7):2031–9.
- Salgarelli AC, Cappare P, Bellini P, Collini M. Usefulness of fine-needle aspiration in parotid diagnostics. *Oral Maxillofac Surg.* 2009;13(4):185–90.
- Zengel P, Notter F, Clevert DA. VTIQ and VTQ in combination with B-mode and color Doppler ultrasound improve classification of salivary gland tumors, especially for inexperienced physicians. *Clin Hemorheol Microcirc.* 2018;70(4):457–66.
- Psychogios G, Rueger H, Jering M, Tsoures E, Kunzel J, Zenk J. Ultrasound can help to indirectly predict contact of parotid tumors to the facial nerve, correct intraglandular localization, and appropriate surgical technique. *Head Neck.* 2019;41(9):3211–8.
- Mansour N, Bas M, Stock KF, Strassen U, Hofauer B, Knopf A. Multimodal ultrasonographic pathway of parotid gland lesions. *Ultraschall Med.* 2017;38(2):166–73.
- Kim HJ, Kim JS. Ultrasound-guided core needle biopsy in salivary glands: a meta-analysis. *Laryngoscope.* 2018;128(1):118–25.
- Buckland JR, Manjaly G, Violaris N, Howlett DC. Ultrasound-guided cutting-needle biopsy of the parotid gland. *J Laryngol Otol.* 1999;113(11):988–92.
- Breeze J, Andi A, Williams MD, Howlett DC. The use of fine needle core biopsy under ultrasound guidance in the diagnosis of a parotid mass. *Br J Oral Maxillofac Surg.* 2009;47(1):78–9.
- Witt BL, Schmidt RL. Ultrasound-guided core needle biopsy of salivary gland lesions: a systematic review and meta-analysis. *Laryngoscope.* 2014;124(3):695–700.
- Seyhun N, Dogan U, Calis ZAB, Kaya MF, Hascicek SO, Turgut S. The role of fine needle aspiration biopsy in deep lobe parotid tumors: comparison of preoperative cytology and postoperative histopathologic results. *Am J Otolaryngol.* 2021;42(1):102590.
- Dostalova L, Kalfert D, Jechova A, Koucky V, Novak S, Kuchar M, Zabrodsky M, Novakova Kodetova D, Ludvikova M, Kholova I, et al. The role of fine-needle aspiration biopsy (FNAB) in the diagnostic management of parotid gland masses with emphasis on potential pitfalls. *Eur Arch Otorhinolaryngol.* 2020;277(6):1763–9.
- Haldar S, Mandalia U, Skelton E, Chow V, Turner SS, Ramesar K, Tighe D, Williams M, Howlett D. Diagnostic investigation of parotid neoplasms: a 16-year experience of freehand fine needle aspiration cytology and ultrasound-guided core needle biopsy. *Int J Oral Maxillofac Surg.* 2015;44(2):151–7.
- Choy KCC, Bundele MM, Li H, Fu EW, Rao NCL, Lim MY. Risk stratification of fine-needle aspiration cytology of parotid neoplasms based on the Milan system-Experience from a tertiary center in Asia. *Head Neck.* 2019;41(9):3125–32.
- Haldar S, Sinnott JD, Tekeli KM, Turner SS, Howlett DC. Biopsy of parotid masses: Review of current techniques. *World J Radiol.* 2016;8(5):501–5.
- Novoa E, Gurtler N, Arnoux A, Kraft M. Diagnostic value of core needle biopsy and fine-needle aspiration in salivary gland lesions. *Head Neck.* 2016;38(Suppl 1):E346-352.
- Pfeiffer J, Ridder GJ. Diagnostic value of ultrasound-guided core needle biopsy in patients with salivary gland masses. *Int J Oral Maxillofac Surg.* 2012;41(4):437–43.
- Nishikado A, Kawata R, Haginomori SI, Terada T, Higashino M, Kurisu Y, Hirose Y. A clinicopathological study of parotid carcinoma: 18-year review of 171 patients at a single institution. *Int J Clin Oncol.* 2018;23(4):615–24.
- Shah KS, Ethunandan M. Tumour seeding after fine-needle aspiration and core biopsy of the head and neck—a systematic review. *Br J Oral Maxillofac Surg.* 2016;54(3):260–5.
- Yamaguchi KT, Strong MS, Shapshay SM, Soto E. Seeding of parotid carcinoma along Vim-Silverman needle tract. *J Otolaryngol.* 1979;8(1):49–52.
- Cho J, Kim J, Lee JS, Chee CG, Kim Y, Choi SI. Comparison of core needle biopsy and fine-needle aspiration in diagnosis of malignant salivary gland neoplasm: systematic review and meta-analysis. *Head Neck.* 2020;42(10):3041–50.
- Eom HJ, Lee JH, Ko MS, Choi YJ, Yoon RG, Cho KJ, Nam SY, Baek JH. Comparison of fine-needle aspiration and core needle biopsy under ultrasonographic guidance for detecting malignancy and for the tissue-specific diagnosis of salivary gland tumors. *AJNR Am J Neuroradiol.* 2015;36(6):1188–93.
- Howlett DC, Skelton E, Moody AB. Establishing an accurate diagnosis of a parotid lump: evaluation of the current biopsy methods - fine needle aspiration cytology, ultrasound-guided core biopsy, and intraoperative frozen section. *Br J Oral Maxillofac Surg.* 2015;53(7):580–3.
- Eisele DW, Sherman ME, Koch WM, Richtsmeier WJ, Wu AY, Erozan YS. Utility of immediate on-site cytopathological procurement and evaluation in fine needle aspiration biopsy of head and neck masses. *Laryngoscope.* 1992;102(12 Pt 1):1328–30.
- Wu M, Burstein DE, Yuan S, Nurse LA, Szporn AH, Zhang D, Genden E. A comparative study of 200 fine needle aspiration biopsies performed by clinicians and cytopathologists. *Laryngoscope.* 2006;116(7):1212–5.

**Publisher's Note** Springer Nature remains neutral with regard to jurisdictional claims in published maps and institutional affiliations.