

## Phase diagram and phase transitions in ferroelectric tris-sarcosine calcium chloride and its brominated isomorphs

S. P. P. Jones,<sup>1,\*</sup> D. M. Evans,<sup>1,†</sup> M. A. Carpenter,<sup>2</sup> S. A. T. Redfern,<sup>2</sup> J. F. Scott,<sup>1</sup> U. Straube,<sup>3</sup> and V. H. Schmidt<sup>4</sup>

<sup>1</sup>*Department of Physics, Cavendish Laboratory, Cambridge University, Cambridge CB3 0HE, United Kingdom*

<sup>2</sup>*Department of Earth Sciences, Cambridge University, Cambridge CB2 3EQ, United Kingdom*

<sup>3</sup>*Department of Physics, University Halle, Halle, Saale D-06108, Germany*

<sup>4</sup>*Department of Physics, Montana State University, Bozeman, Montana 59717, USA*

(Received 24 August 2010; revised manuscript received 19 October 2010; published 4 March 2011)

Tris-sarcosine calcium chloride [(TSCC),  $(\text{CH}_3\text{NHCH}_2\text{COOH})_3\text{CaCl}_2$ ] is a uniaxial ferroelectric (FE) with a displacive second-order phase transition near  $T_c = 130$  K. A continuous range of solid solutions can be made by substituting Br for Cl, which lowers  $T_c$  to 0 K at  $\sim 72\%$  Br. Such a quantum critical point differs from that in pseudocubic FEs, such as O-18 SrTiO<sub>3</sub> or doped KTaO<sub>3</sub>. For many years, this system was thought to have only two phases, paraelectric and FE, at ambient pressure. However, we find from dielectric and resonant ultrasound spectroscopy that there are four phase transitions in TSCC and in TSCC:Br (for  $0 < \text{Br} < 40\%$ ): Order-disorder of the sarcosine methyl group at 185 K; displacive FE transition at 130 K (in pure TSCC); a second FE transition [previously hypothesized to be antiferroelectric (AFE) but probably not] at 64 K; and a new anomaly at  $\sim 45$  K which might be due to a phase transition or to Debye-like freezing of orientational disorder of some part of the sarcosine molecule. The probable sequence of structures is (upon cooling):  $Pnma$  with  $Z = 4(D_{2h}^{16})$  ambient 500 K  $> T > 185$  K, disordered;  $Pnma$  with  $Z = 4(D_{2h}^{16})$  185 K  $> T > 130$  K (ordered);  $Pn2_1a$  with  $Z = 4(C_{2v}^9)$  130 K  $> T > 64$  K (FE);  $P2_1a$  ( $C_{2h}^5$ ) with  $Z = 4$ , 64 K  $> T > 45$  K (not AFE);  $T < 45$  K, unknown structure. A sixth hexagonal structure at high temperatures ( $> 500$  K) is hypothesized to be  $D_{6h}^3$  ( $P6_3/mcm$ ) with  $Z = 2$ , but the samples decompose first at 503 K (230 °C).

DOI: [10.1103/PhysRevB.83.094102](https://doi.org/10.1103/PhysRevB.83.094102)

PACS number(s): 61.50.Ks, 62.20.de, 64.60.-i, 77.55.fp

### I. INTRODUCTION

Tris-sarcosine calcium chloride (TSCC) is a ferroelectric (FE) of considerable interest, with more than 100 papers devoted to its phase transition. The transition, near 130 K, is perfectly second order,<sup>1</sup> which is unusual among FEs. And despite its N-H-Cl hydrogen bonds, it is perfectly displacive (not order-disorder), with an underdamped soft optical phonon branch in both paraelectric (PE) and FE phases, discovered by Feldkamp and Scott in 1980.<sup>2</sup> The soft mode, in fact, reaches  $< 2 \text{ cm}^{-1}$  in its underdamped state in each phase, which is second only to O-18 SrTiO<sub>3</sub> for the softest known optical phonon.<sup>3</sup> Prior to the soft-mode studies, it had been assumed by many authors that the transition was order-disorder, with reviewers misled<sup>4</sup> by the unusual positive pressure dependence of Curie temperature  $T_c$ ,<sup>5</sup> which according to Samara,<sup>6</sup> suggests order-disorder (other exceptions, such as BaMnF<sub>4</sub>, are known<sup>7</sup>). However, careful studies showed that there was no change in  $T_c$  with deuteration,<sup>8</sup> which is implausible for a hydrogen-bond order-disorder mechanism of FE.

The second major reason for interest in TSCC is that it forms solid solutions with Br substitution for Cl, and the addition of Br decreases the transition temperature, reaching a quantum critical point (QCP) of  $T_c = 0$  at 72% Br.<sup>9</sup> Since TSCC is highly uniaxial, this offers the opportunity to explore QCP FEs that, unlike SrTiO<sub>3</sub> and KTaO<sub>3</sub>, are not pseudocubic. The pseudocubic materials exhibit dielectric constants whose reciprocals vary<sup>10</sup> as  $(T - T_c)^\gamma$ , with  $\gamma = 2$ , in contrast to the linear dependence of conventional higher-temperature FEs; but in uniaxial QCP FEs, a different exponent  $\gamma$  is expected.<sup>11</sup>

We note that TSCC is a zwitter-ion crystal. The COOH group of molecular sarcosine has its hydrogen come off and relocate onto the N ion, as shown in Fig. 1, producing a

symmetric Cl-H-N-H-Cl hydrogen-bonding structure (Fig. 2) with Ca<sup>2+</sup> ions surrounded by six oxygen ions (three COO groups). Because the sarcosine molecules behave like stiff rods, the crystal behaves like an inorganic ionic lattice, not a soft molecular crystal. In Fig. 2, from Ashida *et al.*,<sup>12</sup> note the obvious pseudo-hexagonal symmetry; the ratio of  $b$ - to  $c$ -lattice constants is very nearly the square root of 3, which would be perfectly hexagonal. The  $b$  axis is the polar axis, and FE is achieved by a rather rigid rotation of the sarcosine molecules out of the  $ac$ -mirror plane; this reaches a maximum of  $\sim 3^\circ$  of arc at the lowest temperatures and, hence, a very small spontaneous polarization and Curie constant ( $C = \sim 50$  K compared with  $10^5$  K in ABO<sub>3</sub> perovskites). The rotation also stretches the N-H-Cl bonds; however, this cannot be termed an order-disorder transition because that description designates a double well whose shape is temperature independent and whose average hydrogen position  $\langle x(T) \rangle$  is controlled by changing  $T$ , whereas, the TSCC situation is exactly opposite, with a strongly  $T$ -dependent length and shape for the N-H-Cl well—a classic displacive transition.

Sorge and Straube<sup>13</sup> performed extensive dielectric measurements at 1 bar, including dc field effects and reported calculated Landau expansion coefficients of  $A_0 = (1.94 \pm 0.04) \times 10^9 \text{ V mA}^{-1} \text{ s}^{-1} \text{ K}^{-1}$ ,  $B = (4.4 \pm 0.1) \times 10^{15} \text{ Vm}^5 \text{ A}^{-3} \text{ s}^{-3}$ , and  $C = (1.4 \pm 0.2) \times 10^{21} \text{ Vm}^9 \text{ A}^{-5} \text{ s}^{-5}$ . From adiabatic dielectric permittivity measurements at 400 Hz with bias fields up to 5000 V/cm, Bornarel and Schmidt<sup>14</sup> measured  $\epsilon_\infty = 4.2 \pm 0.2$ , Curie-Weiss constant  $C = 38.3 \pm 0.3$  K,  $T_0 = T_c = 129.4 \pm 0.1$  K, and calculated Landau free-energy expansion coefficients  $A_0 = (2.95 \pm 0.2) \times 10^9 \text{ V mA}^{-1} \text{ s}^{-1} \text{ K}^{-1}$  and  $B = (3.5 \pm 0.1) \times 10^{15} \text{ Vm}^5 \text{ A}^{-3} \text{ s}^{-3}$ . Brillouin scattering studies<sup>15,16</sup> found relaxation times and

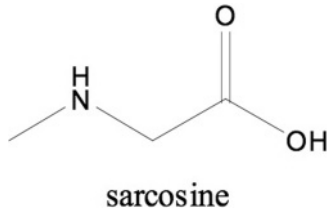


FIG. 1. Structure of sarcosine molecules. The carbons and hydrogens are not shown. In the crystal phase, the COOH ion has its H (zwitter ion) come off, attaching as an N-H-Cl hydrogen bond to the other side of the N ion shown and leaving three polar COO ions around each  $\text{Ca}^{++}$  ion.

evidence for electrostrictive coupling and for piezoelectric coupling below the 130-K transition.

Relatively recently, two new phase transitions were reported: At 185 K, the methyl group on each sarcosine undergoes what is probably hindered (or possibly free) rotation for  $T > 185$  K and fixed positions below.<sup>17</sup> This could, of course, explain the misleading literature about order-disorder at the FE transition at 130 K: The FE transition at 130 K is displacive, but disorder sets in 55 K higher (but still below ambient) so that disordering does indeed occur between  $\sim 125$  and 300 K but in two steps (transitions) rather than one. In addition, a first-order phase transition occurs at 64 K.<sup>18</sup> Unfortunately, neither Refs. 17 nor 18 have been cited in the literature at all, so papers continue to be published without knowledge of these transitions.

It was suggested that the 64-K transition might be an antiferroelectric (AFE) phase.<sup>19</sup> A probable AFE phase is known to exist<sup>20–22</sup> at a few kbar pressure, with a PE-FE-AFE triple point at 176.8 K and 5.03 kbar.<sup>20</sup> The FE-AFE phase boundary extrapolates to 0 K at 1.14 kbar,<sup>20</sup> far from the possible FE-AFE transition at 64 K and 1 bar. However, no extra phonon modes are observed in the high-pressure AFE phase,<sup>23</sup> although a close inspection does show some below 64 K unmentioned by the authors of Ref. 24. No double hysteresis loops occur in the so-called AFE phase at high pressure,<sup>21</sup> nor in the phases below 64-K, so this structure(s) might not be AFE at all. On the other hand, dielectric results<sup>20,21</sup> indicate

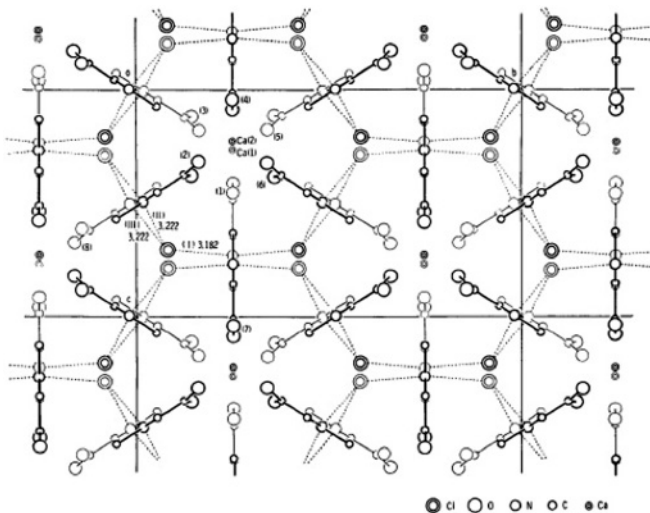


FIG. 2. Structure of TSCC, after Sawada *et al.*<sup>25</sup>

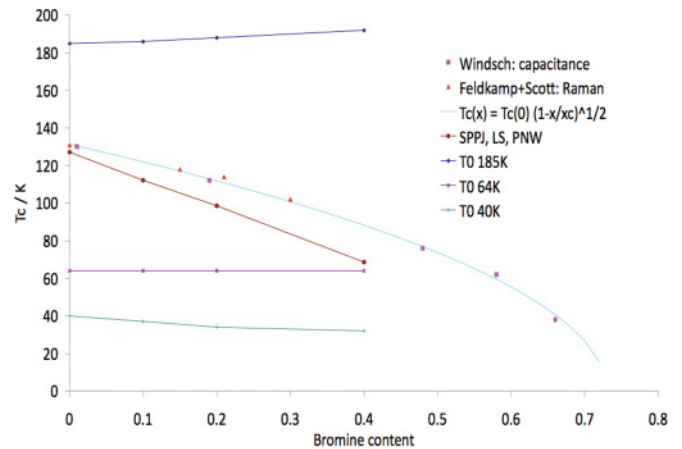


FIG. 3. (Color online) Temperature versus Br concentration phase diagram for TSCC and its brominated isomorphs. The newer data for brominated samples have slightly lower Curie temperatures than the older data, probably due to a difference between the starting Br concentration and the amount in the grown crystals. The curve is shown connecting to a value of 64 K at 40% Br, but this is probably misleading, as discussed in the text. (b) Dielectric 20%-Br sample for cooling (peak near 103 K) and heating (peak near 64 K). This is not due to thermal hysteresis.

that the high-pressure FE-AFE and PE-AFE transitions are quite strongly first order, in which case, double hysteresis loops would not be expected in an AFE phase. Possible structures of the high-pressure AFE phase are orthorhombic and piezoelectric  $P2_12_12_1$ , monoclinic and centrosymmetric  $P2_1/a$ , and monoclinic and centrosymmetric  $P2_1/n$  or  $P2_1/b$  (described in the PE cell, or more correctly, in a new rotated cell, respectively).<sup>16</sup> The 64-K transition exhibits<sup>18</sup> an entropy of transition at 1.16 J/mol K, about half that exhibited at  $T_c$ , rather small for a first-order transition.

Figure 3 presents an overall phase diagram of the phases in pure TSCC and in TSCC:Br from this paper. Also, note that there is an unexplained anomaly in elastic properties at  $\sim 45$  K. The saturation of  $T_c$  with pressure at  $\sim 185$  K was noted earlier by Fujimoto *et al.*<sup>5,21</sup> but not interpreted in terms of the yet-unknown methyl-disordering transition at that temperature. Finally, we have included the  $D_{6h}$  hypothesized prototype high- $T$  phase,<sup>25</sup> although samples decompose at 230 °C (503 K), apparently before this hexagonal phase is reached.

## II. EXPERIMENTAL

### A. Sample preparation

The specimens used were large single crystals from earlier studies.<sup>13,20</sup> They were oriented via external habit and morphology (Fig. 4). They were water white and transparent; the unbrominated specimens were recrystallized by evaporation of an aqueous solution of TSCC crystals grown from 98% pure sarcosine and reagent-grade  $\text{CaCl}_2 \cdot 2\text{H}_2\text{O}$ . Unlike most of the crystals grown, which were hexagonal columns composed of twins, these were lozenge-shaped single crystals. However, the brominated specimens<sup>13</sup> were twinned hexagonal columns.

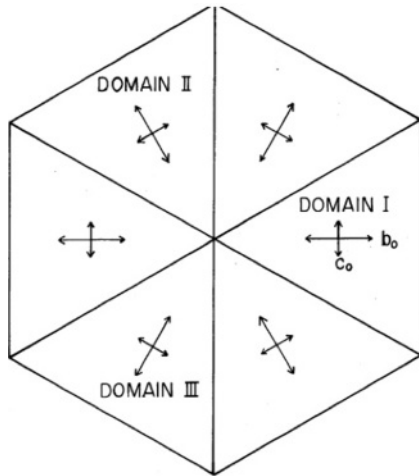


FIG. 4. Diagram of growth habitat used for orienting and cutting samples.

**B. Dielectric measurements**

Dielectric properties were measured from cleaved or wire-cut samples, with typical dimensions of  $5 \times 5 \times 0.5$  mm and silver-paste electrodes, using an Agilent impedance analyzer at frequencies from 1 kHz to 1 MHz over a temperature range of 340 K down to 15 K, with data taken at 1-K intervals upon heating and cooling (typical rate: 1 K/min). Additional data on cooling and heating for Br concentrations of 0%, 10%, 15%, 20%, and 40% are shown in Fig. 5 for the polar  $b$  axis.

The dielectric constants show a remarkable ratio of 2.00:1 for the inverse susceptibilities above and below  $T_c$  (Fig. 6) for all samples. This is the expected textbook case for zero strain coupling but only rarely occurs in nature. This ratio confirms that the transition is second order and mean field. The exact values fitted were for 10%-Br Curie constant  $C = 20.06$  K below  $T_c$  and 40.12 K above, for 20%-Br TSCC, 43.87 K above and 21.94 K below.  $C$  is defined as  $\epsilon(T) = \text{constant} + C/(T - T_c)$ , where, for a second-order transition, the Curie-Weiss temperature (or Curie temperature)  $T_c$  is the

Capacitance data for TSCCB (40%) at 10kHz and various peak voltages

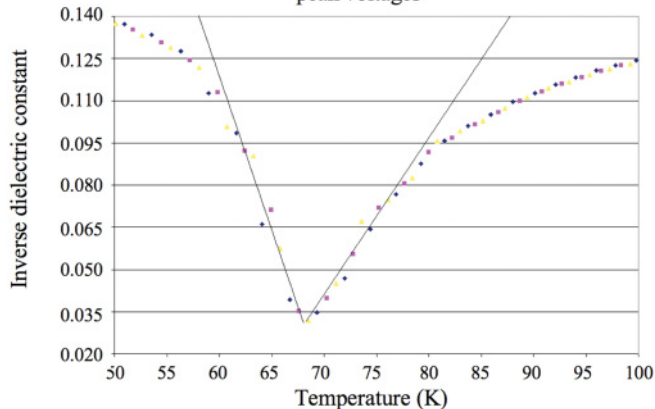


FIG. 5. (Color online) Inverse dielectric constants  $1/\epsilon_b$  versus temperature, showing a ratio of 2.00:1 above and below  $T_c$  for the 40% brominated sample. The numerical results for 10% and 20% Br are given in the text. Unbrominated results are given in earlier literature.

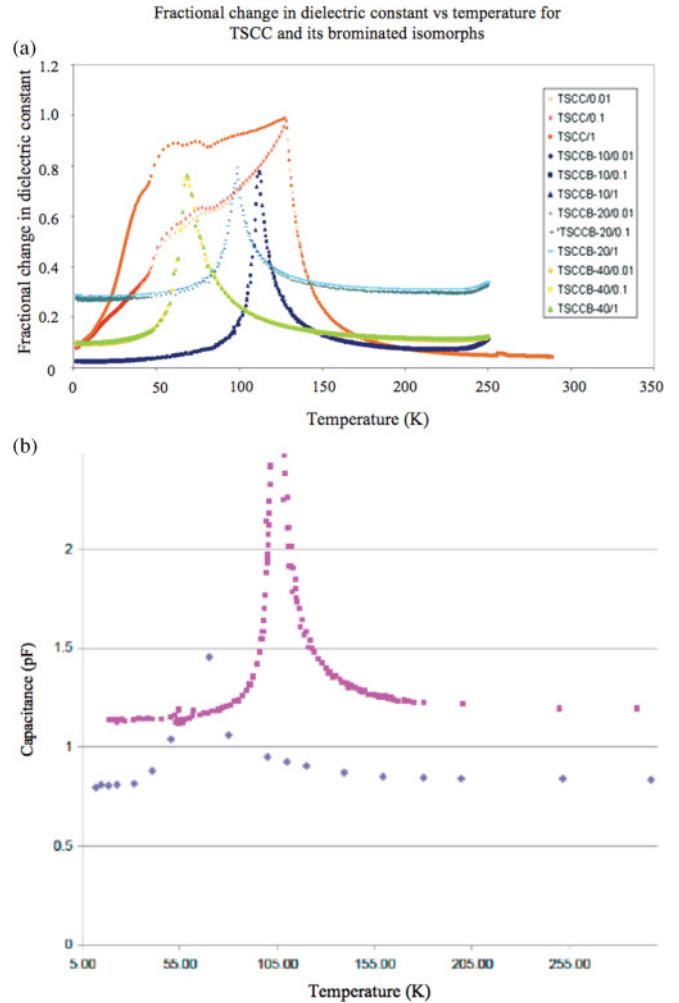


FIG. 6. (Color online) Real part of dielectric constant at 10 kHz for different Br concentrations; curves at 0.01, 0.1, and 1.0 V applied ac test voltages. All data were in thermal equilibrium and steady state except for the pure TSCC sample, which was intentionally heated very quickly; in this case, especially at 1.0 V, the pyroelectric effect revealed low-temperature phase transition(s) near 64 K.

actual transition temperature. These values agree rather well with those from earlier publications (Schmidt obtained 38.3 K for pure TSCC compared with our 40.1 K for 10% Br and 43.9 K for 20% Br). The background values of the dielectric constant of brominated TSCC were  $\sim 6-8$ . This is somewhat higher than the values of 4.2 for pure TSCC reported by Schmidt, which is reasonable.

One unusual aspect of the transition at 64 K is that it sometimes exhibits a dielectric anomaly and sometimes does not. Figure 6(b) shows this effect. A small dielectric anomaly at 64 K was first reported by Haga *et al.*<sup>19</sup> However, we find that the dielectric anomaly can be comparable to that at  $T_c$ . What occurs is that, on cooling, the dielectric anomaly is at  $T_c$  [105 K in Fig. 6(b)], but upon heating, it is at 64 K. This cannot be thermal hysteresis because the sequence is backward (lower temperature upon heating, in contrast to hysteretic overshoot). It appears to be a kind of reentrant transition in which the phase between 64 K and  $T_c$  is most readily obtained upon heating and can display a dielectric peak under those conditions.

### C. Pyroelectric effects

One of the main puzzles for us to explain about TSCC is why Haga *et al.* discovered the phase transition at 64 K via dielectric studies, whereas, equally precise measurements by other groups did not observe any anomaly near this temperature. For that reason, we examined the dielectric response, as shown in Fig. 3, for all four sample groups (0%, 10%, 20%, and 40% bromination) under various conditions. As shown, we first varied the applied ac test voltage from 0.01 to 0.1 to 1.0 V across each specimen. For all samples above  $T_c$  in the PE phase, the dielectric constant was independent of voltage. And for all samples between 64 K and  $T_c$ , the dielectric constant was also independent of voltage if the temperature ramp rate was slow (K/min). However, as shown for the pure TSCC specimen, between 64 K and  $T_c = 130$  K, the dielectric constant depended strongly upon applied voltage if the heating rate was very fast ( $\sim$ K/s). We interpret this as a pyroelectric contribution to the measured dielectric constant. It is important to keep in mind that, when we measure dielectric constant, we usually measure charge. If the sample is kept at a fixed temperature for a long time (minutes), there is no contribution of pyroelectricity: We measure  $\varepsilon(T) = dP(T)/dE$ . However, if the heating/cooling rate is faster than the polarization relaxation time, a larger value can be measured, that is

$$\varepsilon(T) = dP(T)/dE + (d/dE) \int [dP(T)/dT](dT/dt) dt. \quad (1)$$

where  $t$  is time and  $dP/dT$  is the pyroelectric coefficient  $p$ , which is a function of  $E$ . If  $dT/dt$  is slow,  $(d/dE)pdT/dt \ll dP/dE$ , and there is no pyroelectric contribution.

This explains three things: (1) How Haga *et al.* may have discovered the transition at 64 K that normally has no dielectric anomaly by running data slightly faster than Windsch and others; (2) why our data in Fig. 3 depend strongly upon voltage and temperature ramp rate between 64 K and  $T_c$ ; (3) the dielectric constant maximum is larger [top trace in Fig. 3(a)] for fast heating. In addition, and perhaps more importantly, it is independent proof that the phase(s) below 64 K is (are) not FE. Note, in the top trace, that there is a small peak at 64 K and also one at 74 K; the 64-K transition is slightly first order, and this may be due to thermal hysteresis (other anomalies are also found at 74 K), alternatively, it could involve subsidiary dielectric anomalies due to domains.<sup>26</sup>

This figure shows, rather remarkably, the fact that, for the brominated specimens (not pure TSCC), the dielectric peak at 64 K disappears for slow (K/min) cooling runs [as in Fig. 3(b)]. However, more surprisingly, the main dielectric peak at  $T_c$  disappears for fast (K/s) heating runs. This is related to but different from the anomaly discussed for Fig. 3. In this case, the key step seems to be whether or not the samples are cooled below 32 K. If so, then on heating, the dielectric anomaly is only at 64 K and not at  $T_c$ . As in Fig. 3, the dielectric peak at 64 K is presumably pyroelectric. However, the absence of the peak at  $T_c$  requires further explanation; note that pyroelectricity requires piezoelectricity. An *a priori* possibility is that the polar axis has rotated. Although TSCC is a uniaxial FE (and not pseudocubic, like perovskites), it is pseudohexagonal (Fig. 2) and ferroelastic. Therefore, it may

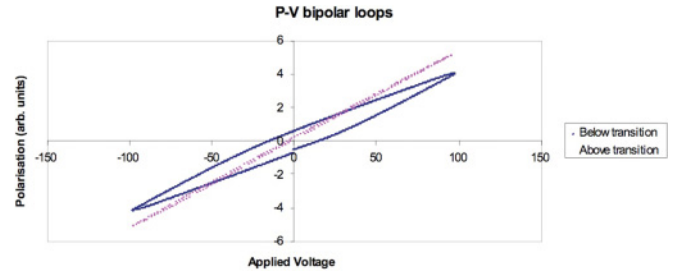


FIG. 7. (Color online) Unsaturated polarization  $P(E)$  at 330 kV/m along the polar axis of pure TSCC. The lossless curve above  $T_c = 130$  K returns below 64 K.

be plausible that strain caused by the lower-temperature phase transition rotates the polarization from  $b$  to  $c$  and that the phase between 64 K and  $T_c$  is FE, but with  $P$  along a different axis. This would be analogous to the phases of BaTiO<sub>3</sub>. In addition, and perhaps more importantly, it is independent proof that the phase(s) below 64 K is (are) not FE—at least not along the  $b$  axis. However, it is quite possible that the 64–130-K phase is FE with  $P$  rotated along a different axis (polar  $b$  and nonpolar  $c$  are very nearly equivalent in this pseudohexagonal ferroelastic). (We return to this point below in the discussion of Fig. 7.) Finally, it is important to note that the axis switching hypothesized for Fig. 7 occurs only in the multidomain hexagonal columnar specimens from Halle and not in the single-domain sample from Montana. Apparently, the piezoelectric stress is sufficient to pole the former. For switching in twinned samples, see Ref. 27.

### D. Polarization measurements

A Radiant Technology tester was employed for polarization measurements below 130 K, but saturated loops were not observed up to 100 V across 0.3 mm–3.3 kV/cm (Fig. 8), only an increase in loss below  $T_c$ . Below 64 K, the loss disappears. Earlier work has shown that no double loops are observed in the so-called AFE phase, but the strong first-order nature

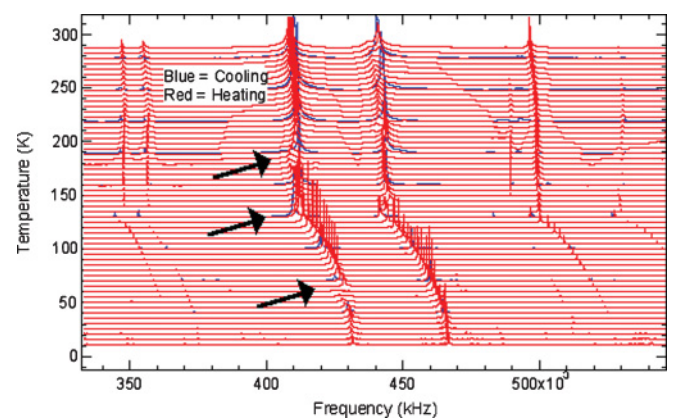


FIG. 8. (Color online) Resonant ultrasonic response versus frequency at different temperatures for TSCC. The stack of spectra reveals anomalies in elastic coefficients  $C_{ij}(T)$  in the 100-kHz regime and is very sensitive to nonpolar phase transitions. Data near temperatures at which anomalies occur in vibrational frequency or damping are indicated by arrows.

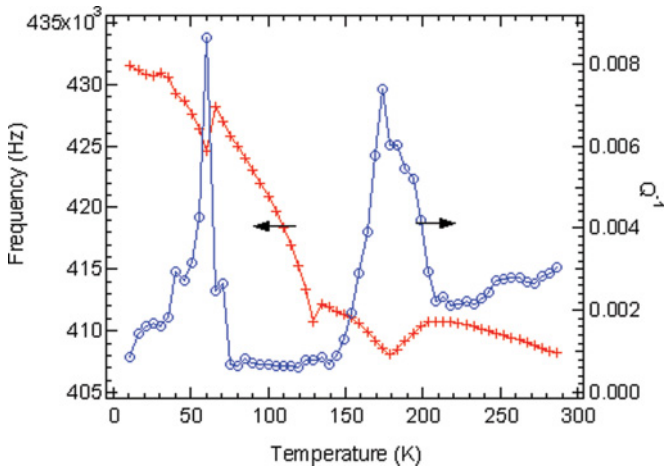


FIG. 9. (Color online) Resonant ultrasonic frequency for one mode near 420 kHz and its loss versus temperature for TSCC.

of the FE and PE phases to that phase would likely prevent observation of such loops even if that phase is AFE.

**E. Resonant ultrasonic spectroscopy**

Resonant ultrasonic spectroscopy (RUS) measurements<sup>28</sup> in the several-hundred kilohertz regime were made on free-standing cleaved *b*-face platelets, which revealed weak anomalies in elastic constants (Fig. 7) at 185, 130 (pure TSCC), 64, and ~45 K and very strong mechanical losses at 185 and 64 K (Fig. 9). Other resonance modes show strong anelastic loss also at the 130-K transition. The phase transition at 185 K in pure TSCC increases in frequency with bromination, reaching 192 K at 40% Br. The dissipation peak at ~45 K in pure TSCC also has been observed at ~33 K in the 40% Br sample.

**F. Dynamic mechanical analysis**

Dynamic mechanical analysis (DMA) is complementary to RUS because it works in the region of a few hertz, rather than hundreds of kilohertz.<sup>29</sup> DMA applies a variable force on a crystal of known width *w*, length *l*, and thickness *t*; all mea-

sured, in our paper, with calipers. The DMA works on the basis of a three-point bending geometry whereby a sample is placed across two knife edge supports with a force applied between them. A constant force is applied to keep the sample in contact with the knives and a dynamic force  $F_D$  with a frequency  $\nu$ . The amplitude (*u*) and the phase lag ( $\delta$ ) of the mechanical response were measured using electromagnetic inductive coupling with resolutions  $\Delta u = 10$  nm and  $\Delta \delta \cong 0.1^\circ$ . Because our sample is much longer than wide, we see only the Young's (*Y*) modulus and not the shear modulus. These are all related by

$$Y = \frac{l^3 F_D \exp(i\delta)}{4t^3 w u_D}. \tag{2}$$

We examined several different frequencies for the pure TSCC specimens and show results in Fig. 10 at frequencies of 10 and 5 Hz because these gave the best signal-to-noise ratios. Initially, we cooled the sample at 10 K/min but found that noise was greatly reduced if we cooled at 5 K/min. After some optimization tests, it was decided to use a static force of 600 mN and a dynamic force of 480 mN. The primary results are as follows: For pure TSCC, the modulus shows a distinct change in slope at  $T_c = 135 \pm 5$  K, decreasing from 8 to ~6 GPa as the sample is cooled below  $T_c$  to ~100 K. The loss tangent increases from 13% to 19% as *T* decreases over this range, probably due to domain motion. Note that the RUS data in Fig. 9 may be sensitive to quite different elastic coefficients  $C_{ij}(T)$  than the three-point bending measurements in Fig. 10, so the data near 185 K are complementary.

**G. Pressure versus temperature phase diagram**

Figure 11 illustrates the previously known *P*-versus *T*-phase diagram for pure TSCC. It can be seen, from Fig. 11 that, at several kbar of hydrostatic pressure, the FE and PE phases transform into a phase labeled AFE. There are two things worthy of note here: First, as discussed above, there is no indication that this phase is AFE; no double hysteresis loops have been reported, and no extra Raman lines are found that would signify doubling of the primitive crystallographic unit cell. Second, the phase boundary bends over with increasing pressure near

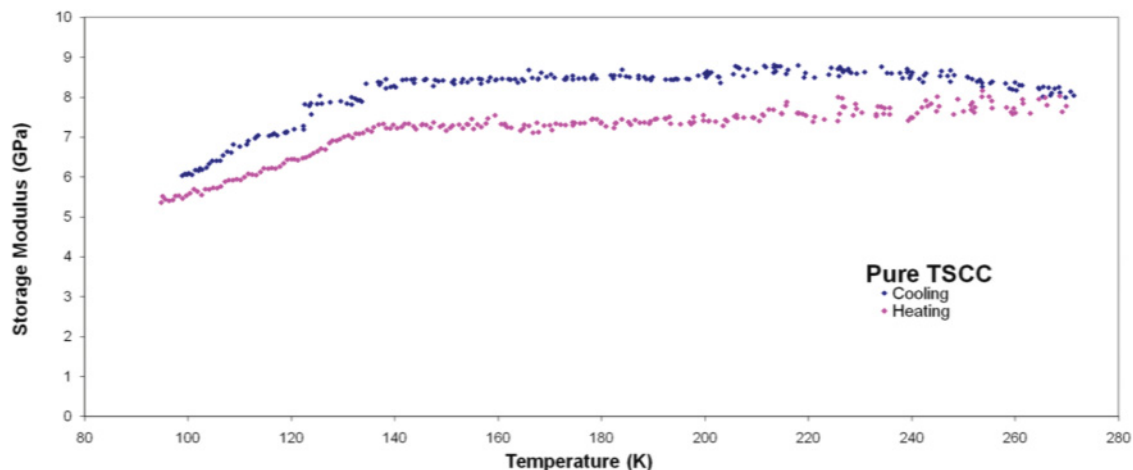


FIG. 10. (Color online) DMA results for Young's modulus. Each set of runs produced approximately 20 000 data points. Excel was used to average every hundred points, and it is these averages that are plotted.

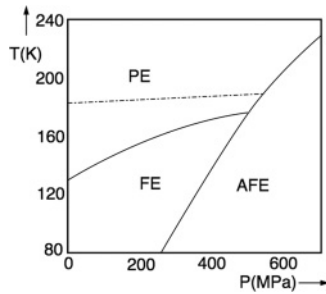


FIG. 11. Temperature versus pressure phase diagram for pure TSCC (after Refs. 18, 20, and 21), showing hypothetical interaction of the order-disorder phase near 185 K with the FE phase. The dashed line assumes that the 185-K phase boundary at atmospheric pressure is pressure independent. Speculation is not made at higher pressures in the AFE phase, and the nature of the vertices is quite unknown.

185 K and saturates. This temperature matches closely to that of the newly observed order-disorder phase transition, and, hence, it suggests that there may be either two closely spaced triple points or else a point where four phases come together. The curvature suggests that the order parameters for the PE/FE transition and for the  $\text{CH}_3$ -rotation order-disorder transition are coupled. Rather more precise data near 185 K will be required to sort this out. The apparent interaction between the phase boundary at 185 K and the PE-FE boundary near 130 K seems reasonable in terms of simple mechanics: The 185-K transition involves free or hindered rotation of the methyl end group on each sarcosine. As temperature decreases

below 185 K, this probably destabilizes the position of the Cl-H-N-H-Cl hydrogen bonds on the adjacent sarcosine atoms such that their planar positions rotate out of the  $b$  plane. At the lowest temperatures, this rotation angle reaches  $\sim 3^\circ$  of arc, similar to that of the Ti-O<sub>3</sub> or Al-O<sub>3</sub> bonds in SrTiO<sub>3</sub> or LaAlO<sub>3</sub>.

Experiments on deuterated TSCC and its effect on the 185-K transition will be published separately.

The other question (Fig. 11) is whether the AFE phase is the stable phase at low temperatures and zero applied pressure. Extrapolating the existing curve to temperatures below liquid nitrogen suggests that it does not intersect the transition at  $T = 64$  K and  $P = 0$  (which has been suggested in earlier literature). As above, some further cryogenic work at liquid-He temperatures is required. In general, the presence of a phase boundary at  $T = 32$  K and  $P = 0$  raises questions about the complexity of and even the presence of a quantum critical point at  $T = 0$ ,  $P = 0$ , and 72% Br. The data in Fig. 3 show that, at 40% Br, the lowest elastic anomaly (at  $\sim 45$  K in pure TSCC) is observed at  $\sim 33$  K. The previously published low-temperature data on TSCC do not go below 33 K, although high-pressure data on 100% brominated TSCC show a FE phase and, hence, a QCP.

### III. QCPS

The presence of unexpected anomalies at low temperatures has complicated and has delayed our study of the QCP near 72%-Br concentration. This will be discussed in a separate paper.

\*Present address: Department of Physics, Oxford University, Oxford OX1 3PU, U.K.

†Present address: Department of Physics, Queens University, Belfast BT7 1NN, Northern Ireland.

<sup>1</sup>Y. Makita, *J. Phys. Soc. Jpn.* **20**, 2073 (1965).

<sup>2</sup>G. V. Kozlov, A. A. Volkov, J. F. Scott, and J. Petzelt, *Phys. Rev. B* **28**, 255 (1983); G. E. Feldkamp and J. F. Scott, *Ferroelectrics* **25**, 171 (1980); G. E. Feldkamp, J. F. Scott, and W. Windsch, *ibid.* **39**, 1163 (1981); S. D. Prokhorova, G. A. Smolensky, I. G. Siny, E. G. Kuzminov, V. D. Mikvabia, and H. Arndt, *ibid.* **25**, 629 (1980).

<sup>3</sup>M. Takesada, M. Itoh, and T. Yagi, *Phys. Rev. Lett.* **96**, 227602 (2006).

<sup>4</sup>M. Fujimoto, S. Jerzak, and W. Windsch, *Phys. Rev. B* **34**, 1668 (1986).

<sup>5</sup>S. Fujimoto, N. Yasuda, K. Takagi, P. S. Narayanan, and H. L. Bhat, *J. Phys. D* **13**, L107 (1980).

<sup>6</sup>G. A. Samara, *Phys. Rev. B* **1**, 3777 (1970).

<sup>7</sup>G. A. Samara and P. M. Richards, *Phys. Rev. B* **14**, 5073 (1976).

<sup>8</sup>M. K. Gergs, D. Michel, H. Schlemmbach, and W. Windsch, *J. Phys. D* **19**, 2431 (1986).

<sup>9</sup>W. Windsch, H. Braeter, U. Gutteck, B. Malige, and B. Milsch, *Sol. St. Commun.* **42**, 839 (1982).

<sup>10</sup>U. T. Hoehchli and L. A. Boatner, *Phys. Rev. B* **20**, 266 (1979).

<sup>11</sup>Stephen Rowley, Ph.D. thesis, Cambridge University, 2011.

<sup>12</sup>T. Ashida, S. Bando, and M. Kakudo, *Acta Crystallogr., Sect. B* **28**, 1560 (1972).

<sup>13</sup>G. Sorge and U. Straube, *Phys. Status Solidi A* **51**, 117 (1979).

<sup>14</sup>J. Bornarel and V. H. Schmidt, *J. Phys. C* **14**, 2017 (1981).

<sup>15</sup>T. Hikita, P. Schnackenberg, and V. H. Schmidt, *Phys. Rev. B* **31**, 299 (1985).

<sup>16</sup>J. T. Wang and V. H. Schmidt, *Phys. Rev. B* **34**, 416 (1986).

<sup>17</sup>H. Haga, A. Onodera, H. Yamashita, and Y. Shiosaki, *Ferroelectrics* **159**, 55 (1994).

<sup>18</sup>K. Lee, M. Lee, K. S. Lee, and A. R. Lim, *J. Phys. Chem. Solids* **66**, 1739 (2005).

<sup>19</sup>H. Haga, A. Onodera, H. Yamashita, and Y. Shiosaki, *J. Phys. Soc. Jpn.* **62**, 1857 (1993).

<sup>20</sup>V. H. Schmidt, *Solid State Commun.* **35**, 649 (1980).

<sup>21</sup>S. Fujimoto, N. Yasuda, K. Takagi, P. S. Narayanan, and H. L. Bhat, *J. Phys. D* **13**, L217 (1980).

<sup>22</sup>Z. X. Bao, V. H. Schmidt, and F. L. Howell, *Ferroelectrics* **145**, 241 (1993).

<sup>23</sup>R. Roth, G. Schaack, and H. D. Hochheimer, *Solid State Commun.* **55**, 121 (1985).

<sup>24</sup>T. Chen and G. Schaack, *J. Phys. C* **17**, 3821 (1984).

<sup>25</sup>A. Sawada, Y. Makita, and Y. Takagi, *J. Phys. Soc. Jpn.* **42**, 1918 (1977).

<sup>26</sup>A. A. Baski, W. F. Oliver, and J. F. Scott, *Phys. Rev. B* **80**, 214112 (2009).

<sup>27</sup>J. Bornarel, J. Lajzerowicz, and J. F. Legrand, *Ferroelectrics* **7**, 313 (1974).

<sup>28</sup>M. A. Carpenter *et al.*, *J. Appl. Phys.* **107**, 013505 (2010).

<sup>29</sup>S. A. T. Redfern, C. Wang, G. Catalan, J.-W. Hong, and J. F. Scott, *J. Phys.: Condens. Matter* **20**, 452205 (2008).